
Athelington, Horham & Redlingfield News

**VILLAGE
MAGAZINE
OF THE
YEAR**

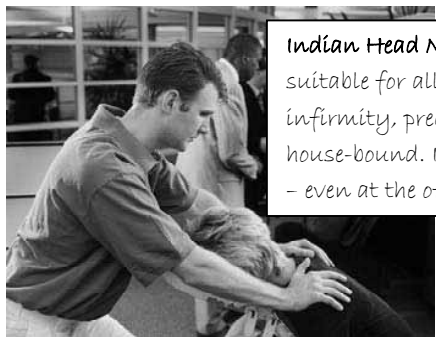


Winter 2009

Issue no. 8

Merry Christmas and Happy New Year to all our readers

BRICK KILN FARM, WORLINGWORTH ROAD, ATHELINGTON
NATURE'S WAY HOLISTIC THERAPIES



Indian Head Massage is suitable for all – regardless of infirmity, pregnancy or being house-bound. I can come to you – even at the office.



Nature's Way Holistic Therapies

Aromatic Swedish full body massage

Stress relieving back massage

Indian Head massage

Reflex foot massage

Hot Stone massage

Crystal healing

Reiki healing

Sauna

(Enquire about home treatments)

Pamper weekends to include treatments of your choice plus evening meal and luxury bed & breakfast may be booked for

BRICK KILN FARM B&B

Contact Linda: 01728 627939

Gift vouchers available for
CHRISTMAS / BIRTHDAYS

[www.brickkilnfarmbandb.co.uk /](http://www.brickkilnfarmbandb.co.uk/)
www.holistictherapiesnaturesway.com

FIRST OFF, TIME TO BLOW our own trumpet – the Suffolk Association of Local Councils has judged your village magazine as the best in the county – outside of the towns and larger villages that is.

We are officially the Newsletter of the Year for smaller parishes (under 1,500 electors). Many thanks to all the advertisers, contributors and helpers who made that possible. It's quite nice to wander around popping mags through people's letterboxes most of the year but many thanks to those who do it through winter as well.

We're not the only local winners though. At the recent Suffolk ACRE agm not only did I see my cousin John but the smiling people from the 95th Bomb Group and the Coffee Caravan were also there to pick up some well-deserved awards (see page 5).

RECENTLY, FOR ONE REASON or another, Jan has been talking to Sgt Jon Eaves, who is stationed at Eye, and he pointed out something, which, when you think about it, is pretty

obvious. If we don't report crimes, even smaller property crimes such as petrol or diesel theft, they go unrecorded and when it comes to apportioning out the policing cake the areas with no reported crime are obviously going to come out bottom.

So please, if you are the victim of a crime report it. You won't get a helicopter and armed response unit in your front garden with officers vowing to hunt down the thieves or die trying but you will be making sure that the powers-that-be know crimes do happen, even in our lovely villages.

AND FINALLY, IF YOU SHOP online, and feel even the slightest bit charitable you should visit www.thegivingmachine.co.uk/

If you sign up and use the site as a gateway when shopping you can help a charity at no cost to yourself. Companies as diverse as Tesco and Toys R Us give a donation to the charity of your choice. My eBay and Amazon shopping sprees now benefit Suffolk Animal Rescue. *Mike Ager*

THE RECTOR: *The Rectory, Stradbroke. Tel: 01379 384363. Email:*

davidstreeter@suffolkonline.net - this shows how you can send messages to me, and I always look forward to hearing from you. How pleased we all are that the A, H & R News has won a county award; the judges noted how well it sends to us all reports, news and useful information. December is the month when we keep the anniversary of God first communicating with us through the birth of his Son at Bethlehem. It has become an event that we celebrate not only in our churches, but in a great variety of ways to promote good cheer on cold days and generosity in our dealings with each other. As well as our church carol services, we will be coming up and down the street in Horham one winter evening this month to sing at your door. Please look out for the date on a notice in the Shop, and be ready to open your door, both to hear us and to give to The Children's Society, that we may share the good news of the Birth of our Lord and Saviour.

With all good wishes for Christmas & The New Year, David & Margaret Streeter.

A strange friendship

ONE SATURDAY MORNING, earlier this summer, Caroline Risk stopped me on the road and asked if I had seen the unusual sight in her paddock.

The grass had been let to the joint master of the Easton Harriers, Lydia Harvey, and she had a grey mare which on this occasion, seemed to have “adopted” a roe deer for the morning. They appeared to have formed a mother and foal relationship, with lots of maternal nuzzling going on. Caroline had spotted them at about 6am and by the time I had got my camera and crept as close as I could for some photographs, it must have been 8.30.

I was using some willows for cover and as I cracked an old twig under my foot, the deer spun round in my direction, and with one more step it took flight.

I have heard people say that wild deer can spook horses but it was certainly not the case with these two,

they were getting on like a house on fire. Quite a rare event I would say.

ON OCTOBER 10TH, I SPENT a few minutes watching the last of the young House Martins, which had just fledged, having flying and feeding practice.

Four youngsters would hurtle around for a few minutes before taking a rest on the wires, where to my surprise, the adults would bring them more food. Hovering in front of them, with wings whirring like humming birds, they shoved more flies down the throats of the lazy offspring, showing that teenagers in the bird world like to be waited on too!

Perhaps that is unfair and they need sustenance to keep twisting and turning in order to master the fly-catching art. It certainly made good viewing through the binoculars.

AFTER A RUN OF WET harvests, and a wet July this year to

REDLINGFIELD NEIGHBOURHOOD WATCH: Christmas is not far off and so here are the usual seasonal reminders. Most of us will be looking for bargains when buying gifts for loved ones but some will take it to extremes and nick anything that's not nailed down so it's a good time to check on personal and domestic security. Spare a thought for those working overtime in the Christmas build-up, pickpockets, purse snatchers and the like. Avoid being a criminal's target by keeping your purse or wallet close and try to avoid overfilling your shopping bags. Another useful contribution to personal security is to stay sober whilst in public places or at least be with trustworthy and sober friends. Make sure there is a designated driver. On the domestic security front we are fortunate that David Love, who knows much about such things, has volunteered advice and assistance. So let's take full advantage of his experience and give the bad guys a hard time. David on 01378 678805 or email@davidlove.f9.co.uk **Chris Gibbons**



Having been born in the tall crop, leverets have no idea what to do when the field is bare and wander about getting their bearings. The Lucky Escape of the Year Award goes to a hedgehog which got flicked up by the pick-up reel and bounced a couple of times like a ping-pong ball before landing safe outside the row.

Most of September's meagre supply of rainfall fell on one day, 13mm (or half an inch in old money), on



get us worried, August turned out to be the start of a great spell of weather through into autumn. After the combine, we let the straw "make" for a day before the baler moves in, by which time some wildlife has taken cover in it too. No end of hares get a rude shock as the baler thunders close, breaking cover at the last moment.

September 9th. This was more than a little welcome, it both saved the life of the newly-planted oilseed rape crop and boosted the blackberry crop in the hedges. A great year for fruit and berries, the blackberries were small and mean before this rain and half as big again afterwards.

MY BIRDS-OF-PREY WATCHING has been a bit quiet, just one Marsh Harrier. Quite blackish, and probably the same one, it was working the hedges around Chris Gibbons' on October 9th. The best birdwatching has been in Mike and Janet's garden. The editor has noted two sightings of a Hawfinch, a bird I have never seen.
Wash Farm Wildlife, Trevor Edwards

Tree O'Clock in woods

THE OPEN DAY PLANNED by New Reeding Woods Group for October 24th was cancelled in favour of an event in December as part of National Tree Week.

BBC Breathing Places is asking groups across the country to join in setting a new Guinness World Record for planting the most trees in multiple locations. The aim is to plant a million trees nationwide, beating the current record of 653,143, between 11am and noon on December 5th. The challenge is called Tree O'Clock, and is a "big moment in time" dedicated to the celebration of trees, and inspiring everyone to do one thing for nature.

At Pound Lane Wood on the Redlingfield Road in Horham the challenge is to plant 200 trees within that hour, and we have identified areas where trees can be planted in the woodland and more willows can go in around the pond.

Many members of the Steering Group went on a willow weaving, course earlier in the year, and a source of willow wands would help ensure

that this ancient craft does not die out. The hedgerow still looks a little thin, so a few extra saplings will soon thicken that up, and in the woodland areas we will plant hazel, hawthorn, hornbeam and holly, then around the edge of the meadow a selection of fruit and nut trees will be planted.

Hot soup and a barbecue will sustain all the enthusiasts that join us in this challenge, and the task will not be too arduous as the trees to be planted are only saplings.

However to plant 200 trees in an hour will take manpower, so please come and help. Spade handle Dibbers with a steel point

would be most useful, we have managed to borrow a few, but otherwise a garden spade will suffice.

Tree planters are invited to come to the wood at about 10.30 on December 5th so that we are ready to meet the challenge which starts at 11am.

If the weather has not been too wet there will also be horse and cart rides around Horham, and the wood group's newest acquisition an International 374 Tractor will be on display.

Michael Reeves



BIG COFFEE MORNING: Our Macmillan Cancer Support coffee morning at Horham & Athelington Community Centre was a great success, raising £242.49! We had help from Denham and Stradbroke as well as Redlingfield, Horham and Athelington so it was a real joint effort. Macmillan are pleased with the proceeds and Kim Palmer and Evelyn Adey are very grateful for everyone's support. Some people seemed happy to spend the morning sitting and chatting over a cup of coffee. I am told that there used to be regular coffee mornings, perhaps we should reinstate them?

Evelyn Adey



EVERYONE'S A WINNER: The team from Horham's 95th Bomb Group Heritage Association, top, accept Suffolk ACRE's Probert Award for the most outstanding community group. Pictured are John Kirkum, James Mutton, Suffolk ACRE's Lord Tollemarche and Helen Krawczynsyn. Heritage association chairman, James Mutton was also runner up in the Campbell Cup, which is presented to the most outstanding individual. Pictured right is Lord Tollemarche presenting the Probert Award runners-up certificate to Sally Fogden of the Rural Coffee Caravan Information Project. And below, editors Evelyn Adey and Mike Ager, centre, accept the Parish Newsletter of the Year Award at Suffolk Association of Local Councils' agm from Stowupland Parish Council's Jerry Voden (left) and Mildenhall's John Barker.



Remembering fallen

A LARGE CROWD GATHERED round Stradbroke war memorial on Remembrance Sunday to pay their respects to the dead of two world wars and other conflicts.

Stradbroke & District Branch of the Royal British Legion's chaplain Rev David Streeter conducted a short service. The Last Post and Reveille were sounded by Barry Sturgeon from Diss Salvation Army. I, as branch chairman, gave the Legion Tribute and laid our wreath.

All together 12 wreaths were laid by local organisations. Ian Bushnell from Horham carried the RBL standard and the Brownie Flag was carried by Aimee McDonald. Four Diss Air Cadets also attended. This was followed by a service conducted by Eric Havers. Our branch secretary Jeremy Higgins said prayers and committee member Albert Siggers gave a reading.

TWENTY-EIGHT MEMBERS AND guests attended the branch's agm at

Laxfield King's Head. The guest speaker was Peter Golding from Risley, our new county secretary. I welcomed him on behalf of the branch and in the Legion Tribute at the start of the meeting I mentioned the names of six members who passed away during the year plus former county standard bearer Derek Doy from Southwold who had supported the branch for many years.

Reports were given by the branch officers and all were elected for another year.

Donations were made to the Poppy Appeal and county chairman's appeal for welfare work. I thanked all for efforts during the year and was presented with a framed certificate from the county for this year's county walk, which raised £335 for the county welfare fund, by Peter Golding.

Christmas greetings and a happy new year to all readers.

Michael Burton, Stradbroke & District RBL branch chairman



HELP FOR CHURCHES: Would you be prepared to help our parish churches by 'examining' their annual accounts? Churches are required to have their accounts reviewed by someone independent of the PCC (Parochial Church Council) but suitable people are sometimes difficult to find. I am trying to compile a list of people available to do this. Church accounts do not, in general, need a full audit, merely a common-sense check. Anyone who has been in business or been a clerk/treasurer would probably have the necessary knowledge and skills. There is advice available from the Charity Commission and the Diocese. Examination is usually in February/March. If you are interested, please contact me on 01379 669258 or mary.lewis@tecova.com

Mary Lewis, Hoxne Deanery Organiser, Diocese of St Edmundsbury & Ipswich

COMMUNITY SHIELD: The Diss & District branch of the Royal Air Force Association (RAFA) has given Diss Air Cadets a shield to be presented annually to the cadet who does most for the community. John Blagden, the Diss & District RAFA Branch welfare officer, handed over the shield to the Air Cadets' Commanding Officer Flight Lieutenant Emma Dixon. John became training officer of Diss Air Cadets Squadron in 1960 and then served as adjutant from 1964 to 1974.



Common climate sense

I SOMETIMES WONDER WHAT it is like for young people growing up with adults constantly talking about the hazards of climate change.

Older people know that it is not the first time that the world has been scary; I was very small at the start of the last world war but as I grew up I was well aware of the anxiety of the adults around me. It was confusing as I had no memory of peacetime.

As a young adult the threat was of nuclear war, especially during the time the Russians were trying to base missiles in Cuba provoking a stand off with the US. For us, there didn't seem to be anything we could do, many of us joined 'Ban the Bomb' marches and we all talked about it but generally felt quite helpless.

Climate change is a real threat but at least this time there are lots of ideas about how to fix it by reducing carbon emissions; the science progresses all the time.

Just as importantly world leaders are beginning to take the situation seriously and are trying to work together to find the best solutions. It sometimes seems like three steps forward and two steps backwards but progress is being made.

And with this threat we can all do something by reducing our use of power and recycling all we can. Individual efforts seem negligible but you only have to watch an ant's nest or a beehive to see how great achievements happen when small creatures work together. Even if it turned out that carbon was not the cause of Climate Change we would at least save the money we spend on fuel and save the land from more landfill.

Experience has taught me that human beings are amazingly resilient and adaptable, we need to work at it and sometimes 'roll with the punches' but above all hang on to our natural common sense!

Evelyn Adey

Time to say 'fare ye well

THIS will be the last of my entries in the Suffolk dickshernery. The simple reason is that this will take me to the end of the alphabet.

However I have been reminded of some words and phrases I have not mentioned. So before I plod on towards "z" here they are:

Forecast is nothing to do with weather predictions. When I forecast it means I take some action in advance. Getting my clothes ready at night for the next morning is a form of "forecasting" as was getting food ready on Friday to feed the stock over the weekend. In other words forecasting involved actions not guesses about the future.

Broadcast took on a new meaning with the coming of radio and, later, TV. It used to involve sowing grain by hand. The sower would walk up and

down the field, with the seed in a basket or bag hung in front of him and sow it using both hands – broadcasting it left and right. It took a special skill to spread it evenly.

I'm on the drag does not mean I am wearing women's clothing or inhaling some illegal substance. It is something I might say to the editor if my article for the magazine was late. On the drag means that I am a little behind. Oh dear, that sounds just as bad – but I think you know what I mean – simply I am late for an appointment or in carrying out some task.

So, on to the letter T.

Thill horse (or should I say "hoss") - This comes from the time when as many as four horses in single file would be used to transport heavy wagonloads for long distances along our narrow roads. The thill horse was



ST JOHN'S DENHAM: At St John's we are looking forward to our Carol Service at 3pm on December 20th. 2010 promises to be an important year as the architects are currently seeking tenders for repairs which will take place in the spring. The stage one investigations which took place in the summer not only revealed how the building needs to be repaired, but also answered some of the questions about the building's history. A conservator was present at the investigations, and his report also sheds light on the previous configurations of this ancient church. The Friends of Denham Church continue to organise events, raising funds towards the repairs, while the PCC is trying to secure further grants to supplement those pledged by English Heritage and Suffolk Historic Churches Trust. Susan Stone from the Suffolk Wildlife Trust has been giving advice on churchyard management, with the plan to encourage the wildlife in the churchyard as well as making the gravestones accessible to visitors researching family history. In 2010 we will have a Family Services at 3pm on January 24th and February 28th.

Margaret Reeves

tergether'

the one between the shafts. The quartet was led by the fore horse, followed by the lark horse, then the pin horse and finally the thill horse. I hope you have got all that – but I won't be testing you on it, so don't worry.

Tizzick - I have had a tizzick over the past few days. It is a dry cough – the aftermath of a cold.

Tricolate - A lovely word which means to decorate or elaborate.

Twiddle - I must admit I have never come across this word – but I am told it was used to mean a small pimple.

Wapsy - A wasp.

Wisp - A handful of straw folded and knotted to plug a hole in a sack.

Without - Unless. As in "I shell niver git this owd garden dug without you all help me."

Yelm - Bundles of straw for thatchers to carry up to the roof.

Yip - A shrill noise.

I have just had to give up on Z. Have you any suggestions?

Anyway it is time for me to say "Fare ye well tergether."

Brian Ager

NEWS IN BRIEF

SANTA CLAUS: Father Christmas will again visit Horham and Athelington on Christmas morning (sorry we cannot extend the service any further). If you would like to book a visit contact Mother Christmas on 01379 384231. There is no age discrimination, he will visit young and old alike. In return he requests a donation for the East Anglian Children's Hospice.

POPPY APPEAL: Janet Fisk would like to thank everyone in Horham and Athelington who gave so generously this year to the Poppy Appeal. £312 was raised which was nearly 30 per cent up on last year. She would especially like to thank Mrs Annie Harvey, Mrs Melva Huggins and Mrs Elizabeth Hall who helped her with this year's Appeal. In Redlingfield, Susan and Allan Chapman collected £90.

RUSSIAN HISTORY: A WEA course Russia: From Czars to Commissars and Oligarchs starts on Tuesday, January 19th at Vine Church Hall, Eye. It will be on Tuesdays at 7.45pm until March 30th. Booking: 01223 417320; standard fee: £43.50. Enquiries: 020 7426 3450. Website www.wea.org.uk

NOVEMBER IS AN ODD MONTH

November is an odd month,

*We have moments of twilight & full
bright sun light!*

*November is a month of quiet reflection
of past sunny days!*

*It is in November we remember a
treason so infamous it could have
changed this land?*

POETRY CORNER

*November we remember those who
have gone before and paid a price so
dear?*

*We must not forget the price paid to
keep us free in sunny halcyon days!*

*Plus Christmas is only a month away!
Yes November is an odd month*

From Mandy Miller

Giving 1940s Australia

WE HAVE BEEN LUCKY enough to be given a copy of a talk given to an Australian WI in the 1940s about life in Suffolk and farming at Athelington Hall.

Thanks to Josephine Cathles we have the notes for a talk given by her mother Grace soon after she arrived in Australia in 1947 and again when she retired to Batemans Bay in New South Wales. In 1936 Athelington Hall was owned by Bill and Grace Cathles who had four children. In 1947 they emigrated to Australia and bought a sheep farm.

They always thought fondly of Athelington and Bill started to correspond with Tom Havers who had bought Athelington Hall. Bill wanted to know all about the farm and the correspondence continued up to his death.

Tom visited Australia several times but Bill never came back to England. Grace returned once and Tom put on a big party for her in the Horham & Athelington Community Centre. Grace died in 1998 and her daughter, Josephine, found the notes she made for a talk to her local, Australian WI. The following is part of her talk (it is so interesting there'll be a further instalment in our next issue).

"THE MAIN COMPARISON I CAN make between life here and in England is to the methods of using the land. At first, things seemed so very different

here. The difference in the size of the holdings being almost unbelievable.

"In England, there are very few large farms of even 500 to 1,000 acres, most came under 50. Ours was just over 200, which was a very good average size for our part of the world, which was one of the most important arable districts.

"We grew most crops, wheat, barley, oats, potatoes, peas, beans and sugar beet, or clovers, all of them on a very strict rotation to keep the land in good condition. It is divided into fields of between 6 and 15 acres, each divided by a deep ditch to drain the land and a cut and woven hedge to keep stock in when they are used as pasture. Of course for about five months of the year, stock has to be kept in yards and hand fed as there is no growth of grass at all during the



winter months.

"As the properties are small ones, neighbours are close and villages are small. Market towns are within easy reach. Our WI centre was 3.5 miles away but I believe they have now started a new branch in one local village, one mile away. I'm afraid that I was rather a bad member most of the time during the war the only transport I could use was a bicycle and with small children to look after, it wasn't too easy.

"One good bit of work done by the WI during the war was jam making.

a taste of old Suffolk



Grace Cathles and her grandson pictured in Australia by Tom Havers after emigrating from Athelington in 1947.



Sugar was so short that local fruit was being wasted so the government got the WI to set up centres in someone's kitchen in the villages and they supplied the sugar and we did the rest.

"It was then inspected and passed for sale to our local shops to be used as part of our jam ration. It was good jam too . . . The factory made stuff was very poor. The first lot of jam we made came about one and a half pounds

overweight according to the quantity of sugar used and although it was perfect jam, it was labelled substandard. So I'm afraid that after that, we were not so honest and learnt to show only the exact amount of jam.

"The weather is always a serious item to deal with in English farming. Too late severe weather will hold up spring cultivations and so bad crops result. Everything will be good until harvest time and then wet weather will start and crops will be spoilt. Still, they say that farmers like grumbling!

"One year we had severe frost and snow start in January and lasted for over two months, even the roads retaining a thick sheet of ice for all that time. The only good thing was the skating on lakes and ponds – even the schoolchildren were taken during work hours! Another year we had a freak snowstorm when all the fruit trees and shrubs were in full blossom.

Continued on page 12

NEWS IN BRIEF

HISTORY HELP: Chris Johnson, who is writing the history of a small pottery and brickworks in south-west Essex near where he used to live before moving to Hoxne two years ago, is hoping you can help. The firm employed a number of men from Suffolk, one of whom was Samuel J. Aldous who was born in Horham in 1857. His wife, Emily, was born in Suffolk in 1858 and is described as an earthenware manufacturer. They seem to have moved to Essex shortly before 1881. Chris wonders if he, or his parents, worked in a pottery or brickfield in the Horham area. Any info would be greatly appreciated (01379 668220 or chris.jackie@tiscali.co.uk).

VOTE FOR BROADBAND: People across East Anglia are being urged by the East of England Development Agency to register their demand for faster broadband. If you want faster broadband go to the Eastern Region Broadband Uplift Scheme website at www.erebusonline.org.uk/ and register.

LIB DEM CANDIDATE SELECTED: Daisy Cooper of The Street, Horham, is the Liberal Democrat Parliamentary Candidate for Suffolk Coastal. She is a senior strategic planner at the Commonwealth Secretariat.

MORE CONCERTS: Building on the successful November concert at Wingfield Barns by the Dexterity Trio, there will be concerts in February and March also presented by Adrian Knott. Bookings at Wingfield Barns box office (01379 384505).

Continued from page 11

“Horses for riding are very few and far between. Only folk with a lot of space, time and money usually can ride . . . For work of course, men do not need to ride except in some hill districts of which I am afraid I know very little. Even for farm work, horses are being pushed out by tractors and machinery. The old hands though, still shake their heads and reckon that the work isn't properly done with the tractors . . .”

“Another thing that I know must seem strange to any Australian visiting England is [the] vastly different way in which people talk in each district – [it] seems almost like a foreign language sometimes. I know that one old Suffolk foreman was with us for several years and I never understood a word he said. I would just answer yes or no, and hope that I had guessed correctly.

“While fields were being ploughed, we sometimes came across old coins . . . Once, we found a Dutch coin dated around the time when English soldiers were returning from a war against Holland. We even found an old medal that might have been issued, we guess to schoolchildren showing Princess May of Teck.” (*Lady May Abel Smith was a great-granddaughter of Queen Victoria. From her birth, she was known as Princess May of Teck. She was later styled The Lady May Cambridge, after the Royal Family ceased using their German titles in 1917, and Lady May Abel Smith after her marriage in 1931. Born in 1906 she died in 1994.*)

VILLAGE HUB: Congratulations to Occold on their swanky new village hall and play area, which are well and truly open for business after the grand opening in September. Our 'Suffolk loik it useter be' correspondent Brian Ager (left) gave a talk at the first ORACLE social evening. He is pictured with Occold mag editor and organiser extraordinaire Andy Andrews.



Fairtrade for Christmas

PHEW! I HAVE JUST GOT all the goods back home from the Big Fairtrade Day – apart from the items that are in the shop of course! It's been a tiring week, but worthwhile, because we took a total of just over £1,000 in sales on the day.

That is a bit better than in '07 (when we last did this event) – but nowhere near as good as the £2,500 we took in '06. Lots of new faces came along which was great, but where were all of the stalwarts we have come to rely on? If you think you are one of the stalwarts I am referring to, why not pop in the shop because I've missed you or find me at . . . Brundish Christmas Fair on Saturday December 5th, 1pm-4pm, or Framlingham Charities Market on Sunday December 6th, 2pm-4pm.

I know folks are now shopping on line a lot for their seasonal goodies. I do understand that it can be

convenient, but don't forget that it can be expensive – in both postage costs, and time spent in Post office depot collection queues. Also, it is always better to see things in the flesh rather than rely on photographs – and finally, although most importantly – by shopping in a real shop you help the community life, and help keep enterprise and jobs alive in this area.



Thank you to everyone who has shopped with us in '09, asked me to an event, or listened to me speak – you all give me the encouragement to keep going. Special thanks have to go to Phil, my husband, who has had his domestic life turned upside down by fairtrade for more than years now.

Eye Church Shop is open Mondays, and Wednesdays 11am-1pm and Fridays 11am-3pm and in December on Saturdays 9.30am-1pm.

Merry Christmas!

Sue Watson 01379 384558



JACK HOLYOAK: My son Jack, who was tragically killed in a car accident on of October 16th aged just 22, will be irreplaceable in our hearts and also in our house. A wonderful son who was always so full of life and vitality he seemed to fill our home with his presence. I treasure the memories of working with him on various projects and recall them fondly to myself in my dark moments, of which there are many. We moved into Horham when Jacko was only five days old so this is the only home he ever knew and he loved the area so much, surrounded as he was by his friends from all over the area, his friends he thought so much

of. He had only recently started a new job and was so full of optimism for the future and full of plans which makes his terrible loss even more poignant. We give thanks that nobody else was hurt as this terrible pain would then be unbearable and offer our sincere thanks to all the condolences that have been sent to us.

Tony Holyoak

ANNE PRICE (1961-2009): Anne, the younger daughter of Olly and Margaret Phillips, was born in Stradbroke on June 8th 1961 and lived in Horham until she moved to London about thirty years ago. She married David Price on June 6th, 1988, and had two children Ella and Max. She died in St Francis Hospice, Romford, on October 19th, aged 48, and a Memorial Service was held for her in Stradbroke Church on Saturday, November 14th. She is remembered for her love of dogs and horses and the Suffolk countryside, her musical ability on the piano and the flute, and as a good friend whom it was great fun to know. She was sister to Susan and John.

David Streeter

OLIVE MABEL CHAPMAN (1916-2009): My Grandmother (Nan) passed away suddenly on October 27th. Although 93 years old it was surprising as she previously had good health but maturing age had seen limb mobility restricted. Nan was a serious lady, not given to frivolousness or outgoing gestures. She enjoyed privacy, being frustrated in later life that she was no longer independent. Well into her eighties she'd arise at six to go through her daily routine. People commented she had impeccable dress sense and always looked smart. She was born the eldest of nine Harvey children at Athelington. She married Reginald Chapman in 1938 and lived in Horham. They were together 61 years before his passing. They had three daughters including my Mum, eight grandchildren and nine great-grandchildren, who individually miss her in their own way. Personal memories are of Nan cycling to our house with crisps for myself and sisters. She wore flamboyant hats, only seen today at Ascot races, and I would naively express my disapproval. When young I spent many Sundays and Christmas Days at 11 Manor Park with our cousins. Nan was central to good childhood memories. It's clichéd to say life goes on but, with the departure of my last grandparent, a bit of something special has been removed.



Ian Crane

Your District Councillor reports



CONGRATULATIONS to you all for winning the SALC Magazine of the Year. Very well deserved. The

magazine is full of useful information as well as interesting articles and handy hints - a winning formula obviously.

I am very glad to see so many people turning out for the community events in the villages. Please bear in mind that there is some 106 Community money – from developers – available from Mid Suffolk District Council to be spent on initiatives to benefit us. So get your thinking caps on.

Now that winter is here, can I remind you please to keep a lookout for the elderly and those living alone. If they need shopping done or medicines collected we can arrange that.

If anyone is thinking of a change of scenery in the spring and are Mid Suffolk tenants, take a look at the website and see what is available in the Gateway to Homechoice. Grants are also available for Warmer Front and Energy Efficiency.

My husband Derrick and I wish you all a very happy Christmas. Listen out for Father Christmas on his tractor on Christmas morning - he is raising money for local charities as he goes.

Elizabeth Gibson-Harries,
01379 384680

Your County Councillor reports



IT MUST BE SERIOUS WHEN people in the pub start talking about politics. Here the issue is about the Conservative Candidate for Parliament in the General Election, which must be held within the next six months.

Sir Michael Lord (Conservative) MP for Central Suffolk & North Ipswich announced a few months ago that he would not be standing for election again. Nothing in politics should be taken for granted but it is assumed that this Parliamentary Seat is a pretty safe one for the Conservatives (in 2005 the Conservative majority was 7,856 over the Labour Candidate). As a consequence the way in which the local Conservative Association goes about the business of selecting a Parliamentary Candidate is of wider interest.

At the time of writing three women and three men were selected to go before the Executive Committee to see whether they are acceptable to go before the Special General Meeting.

All six are no doubt well qualified but there is perhaps one area of concern being expressed by party and non-party members. Not one of the six seems to have any connection with Suffolk let alone Central Suffolk. This need not be a bar. John Gummer served the residents of the old Eye Constituency well.

However, there is a feeling that Suffolk is loosing out when it comes to Central Government expenditure. For example, the amount spent by the NHS on patients in Central Suffolk is below 90 per cent of the average in England.

This sort of gap in funding for the NHS and also councils makes life very difficult. Perhaps it is a local person who knows the issues and has passion to fight for Suffolk who should be given an opportunity to "strut their stuff" in front of the final selection meeting.

Guy McGregor, 01379 668434

MONDAYS

Ballroom dancing: St Edmund's Hall, Hoxne, 7.30pm-9.30pm (for adults). Sandra Hartley, 01728 723887.

TUESDAYS

Improver line dance class: Coronation Hall, Wilby. 9.30am-11.30am. Rose, 01379 870346.

Belly dancing: Horham Community Centre, come & learn to Belly Dance most Tuesdays 7.30 pm. 01379 384370.

Bingo: Thorndon Village Hall, 7.30pm every other Tues. Dec 8, Jan 5 & 19, Feb 2 & 16. Brenda Hunt, 01379 678178.

WEDNESDAYS

Improver/intermediate line dance class: Wortham Community Centre. 7.30pm-9.30pm. Rose, 01379 870346.

Hoxon Hundred: Summer dance-outs at local pubs. Winter practises. Ron Ross, 01379 643563.

Little Treasure's Baby & Toddler Group: St Edmund's Hall, Hoxne, 10am-12pm, term time. 07910 8331949.

THURSDAYS

Happy Circle Club: Horham Community Centre, 2nd & 4th Thurs, 2pm-4.30pm (summer) & 1.30-4pm (winter).

FRIDAYS

Bingo: Stradbroke Community Centre, Wilby Road, 2nd Fri monthly. 7.30pm. Mary Ellis, 01379 384642.

Bereavement Support Group: Eye Volunteer Centre, 3pm, Dec 11 & Jan 8.

FRIDAYS/SUNDAYS

Traditional music: Worlingworth Swan, 2nd Fri evening of month in summer. Sunday lunchtimes in autumn & winter. 01728 628267.

SATURDAYS & SUNDAYS

Open days: 95th Bomb Group Heritage Association/Red Feather Club open on last weekend of the month May-October (inclusive). 10am-4pm.

SUNDAYS

95th BG Hospital Museum: May-October on last Sunday in the month. 10am-5pm.

FRIDAY, NOVEMBER 20-SUNDAY, DECEMBER 6

East Anglian Marine Artists Show:

Wingfield Barns, £4 or £2 under 18. 11am-4pm, Tues-Fri & Sun.

FRIDAY, NOVEMBER 27-WED, DECEMBER 2

Exhibition of Christmas Crib:

Stradbroke Church, opens Fri Nov 27 at 4pm then daily 10 am-1pm & 2-4 pm.

Redlingfield Coffee Morning: No. 1 Abbots Meadow, 10am-noon. Sherry, mince pies & free raffle for all attending.

Redlingfield & Occold WI: WI Christmas Meal.

Charity Christmas Fayre: The Old Coach House, Thornham Hall Stables, Thornham Magna, 6pm-9pm. Free entry to an evening of Christmas craft stalls to raise money for the air ambulance.

SATURDAY, DECEMBER 5

Collector's Fair: Red Feather Club Horham, 10am-4pm. Stalls selling militaria, memorabilia, books. See story.

Hoxne Church Christmas Bazaar:

St Edmund's Hall.

ORAC Christmas Dinner: Occold Village Hall.

Christmas Bazaar: Worlingworth Community Centre. Stalls, light lunches. 11am-1.30pm. Adults 50p, includes a cup of tea/coffee. In aid of Church fund.

Debenham Christmas Festival: Christmas tree lights turned on at 4.30pm. Late night shopping, music & entertainment, Santa's Grotto, Christmas crafts etc ending with Carols on the Village Green at 8pm.

Christmas Market: Debenham High School, 2pm-5pm.

Christmas Bazaar: Debenham Community Centre, 2-4pm. In aid of Debenham Parish Church, St Mary Magdalene.

SATURDAY, DECEMBER 5-SUNDAY, DECEMBER 6

Tudor Christmas Bazaar: Wingfield Barns. Sat 10am-5pm, Sun 10am-4pm. Trade & public enquiries to Lesley Jackson, 01379 384505.

SUNDAY, DECEMBER 6, 13, 20

& SATURDAY DECEMBER 19

Mid Suffolk Light Railway Santa

Specials: Price includes child's present, refreshments, entertainment & journey to North Pole Halt by steam. £8 each. Book at www.msfr.org.uk or 01473 890622.

THURSDAY, DECEMBER 10

Occold School Christmas Production:
Occold Village Hall.

FRIDAY, DECEMBER 11

Community Coffee Morning: 9:30am-11am, Occold School.

Occold Pre School Christmas Play:
noon-4pm, Occold Village Hall.

SATURDAY, DECEMBER 12

Christmas Party: Red Feather Club's Blue Lounge, Horham. See story.

Christmas Family Party: Syleham & Wingfield Village Hall.

TUESDAY, DECEMBER 15

Eye & Stradbroke Family History

Group: Stradbroke Community Centre, 7.30pm. £2. Julie Kersey, 01728 860551.

WEDNESDAY, DECEMBER 16

Carols in the playground: Occold School

THURSDAY, DECEMBER 17

Stradbroke Cinema -The Boat that

Rocked: Stradbroke Community Centre, 7pm for 7.30 pm. Entrance £5.50.

SATURDAY, DECEMBER 19

Jive Christmas Party: Syleham & Wingfield Village Hall.

SUNDAY DECEMBER 20

Christmas folklore & carols: Thornham Walks, Thornham Magna, 2pm. A short walk to explore Christmas folklore finishes at Thornham Magna Church for carols, mince pies & punch. Take a torch. Adults: £3; Children: £1.

MONDAY, DECEMBER 21

Village Carol Service: Hoxne Church.

SUNDAY, DECEMBER 27

Mid Suffolk Light Railway Mince Pie

Special (adults only): Travel first class with Christmas fare. Booking essential.

MONDAY, DECEMBER 28

Music Festival Christmas Box: St

Edmund's Hall, Hoxne.

THURSDAY, DECEMBER 31

New Years Eve Celebrations: Horham

Community Centre, 8pm. Free to all, families welcome. Live music from Paul 'Hammy' Hamilton, raffle & bar. Bring food (snacks etc). Don Moyes, 01379 388129.

New Years Party: Thorndon Village Hall, 8pm till late. Live music from The Zephyrs. Tickets £15 from Clinton 678551, Angela 678632 & Brenda 678178. Buffet & bar.

New Year's Eve Party: Syleham & Wingfield Village Hall.

New Years Eve Party Night: Occold Village Hall.

WEDNESDAY, JANUARY 6

Redlingfield Coffee Morning: TBA.

TUESDAY, JANUARY 19

ORACLE Evening: Occold Village Hall, 7:30pm.

THURSDAY, JANUARY 21

Stradbroke Cinema: Title TBA.

SATURDAY, JANUARY 30

Burns Night: Thorndon Village Hall, 7pm.

WEDNESDAY, FEBRUARY 3

Redlingfield Coffee Morning: TBA.

Charity Pamper Evening: Thornham Hall Stables, 6.30pm. Entry £2, includes a raffle ticket. Treatments from £2. Website www.thornhamcoachhouse.co.uk

SATURDAY, FEBRUARY 6

Hoxon Hundred Ceilidh: St Edmunds Hall, Hoxne, 8 pm. Music by Spit and Polish & good food. Tickets £10 or £5 for under 14s. Ron Ross, 01379 643563.

WEDNESDAY, MARCH 3

Redlingfield Coffee Morning: TBA.

TUESDAY, APRIL 27

Redlingfield & Occold WI Group Meeting: Occold Village Hall.

TUESDAY, MAY 11

ORACLE Evening: Occold Village Hall, 7:30pm.

FOR CAROL SERVICES IN ATHELINGTON, HORHAM, REDLINGFIELD & STRADBROKE SEE PAGE 25

Memorial for US airmen planned

REDLINGFIELD VILLAGERS and Horham's 95th Bomb Group Heritage Association have joined forces in a bid to commemorate the crew of a B-17 bomber which crashed in the village in 1943.

The parish council and the association hope a memorial to the crew will be ready to be unveiled at next year's big open weekend at the 95th in May.

These pictures, from James Mutton at

the 95th, show the devastation caused when B-17G 42-31123 crashed near Green Farm on November 19th 1943 with its full load of bombs, ammunition and fuel. All ten crew members died but miraculously the villagers escaped harm.

For many years it was thought the crash, as the aircraft was taking off from the Horham airbase, was caused by pilot error. However, it was just a case of bad luck.

The young American pilot had just days

before successfully ditched his aircraft in the channel with no loss of life – an extraordinary manoeuvre.

The idea for a memorial was originally put to the village committee by Edith Coe. Graham and Patrick Abbott, who now farm the land, were quick to agree to the siting of the memorial on their land and James



quickly got on board. Now all we've got to do is raise the money, get planning permission, OK a design, get a memorial made and finally organise the unveiling ceremony. That should keep everyone out of trouble for a day or two.

We are trying to track down any descendants of those killed in the crash and unearth any pictures. The heritage association believe they have a picture of the crew in their extensive archives but it is probably among those that are unlabelled. So they are hoping to track down some other pictures of the crew members to help them identify it.

If you want to know more about the crash at Green Farm you can visit the

bomb group museum at Horham or www.onesuffolk.co.uk/RedlingfieldPC/LocalHistory/ on Redlingfield's website.

The casualties were (according to the most recent ongoing research in the US): 2nd Lieutenant KB Rongstad, pilot; 2nd Lieutenant WM Strawn, co-pilot; 2nd Lieutenant RE Diete, navigator; 2nd Lieutenant JF Spicer, bombardier; Technical Sgt GA Richmond, top-turret, gunner/flight engineer; Technical Sgt GV Soreason, radio operator; Staff Sgt CE Phinney, ball turret gunner; Staff Sgt LM Mirabel, left waist gunner; Staff Sgt JW Torok, right waist gunner; and Staff Sgt K Cosby, tail gunner.

Mike Ager

AT THE 95TH: The 95th Bomb Group Heritage Association are holding two big events in December – a collectors fair and their Christmas party. The Collector's Fair at Horham's Red Feather Club is on Saturday, December 5th, 10am-4pm. It will feature stalls selling militaria, memorabilia, books etc. Refreshments available including a licensed bar, teas and coffees. Contact: Frank Sherman, 01379 678471 (mobile 07989 809405) or James Mutton, 01728 860930. The Christmas Party on Saturday, December 12th, 7.30pm till late, in the Red Feather Club's Blue Lounge, with singer Dawn Diamond and Texas Tommy's disco. Tickets are £7.50 each from John Kirkum, 2 Wheatcrofts, Horham, IP21 5DX, enclose S.A.E. and cheque to "95th Bomb Group Heritage Association". All money raised will go to the continuing restoration of the 95th Bomb Group Museum/Red Feather Club (www.95thbg-horham.com).



REDLINGFIELD:

DOORSTEP GREEN SLIDE: The new slide has arrived and is sitting in it's boxes waiting for us to put it together. It's a bit like a half-ton flat-pack. We decided to save the £1,200 the firm would have charged for installing it by doing it ourselves, which will be quite challenging. We plan to have it fully operational for next spring

HARVEST SUPPER: At this years harvest supper we decided to try something different so Russell Kerry kindly volunteered himself and his DJ equipment for the evening. We'd really like to know what you thought of the changes and how we can improve next year's event. Please give your feedback to anyone on the village committee.

PARISH PLAN/HOUSING NEEDS SURVEY: The steering group has now met and we plan to put out a special Redlingfield News in December to bring everyone up to date with what's happening. We hope to have the questionnaires out for Christmas, so you have something to do on Boxing Day.

EDITH COE: Many thanks to Edith (pictured), who recently stood down from the village's Neighbourhood Watch committee, for her years of service. David Love has taken her place.



REDLINGFIELD PARISH COUNCIL/REDLINGFIELD VILLAGE MEETING: chairman - Janet Norman-Philips (Hidcote Lodge, Mill Road, Redlingfield, IP23 7QU, 01379 678835); secretary - Mike Ager; treasurer - Jeanette Brierley; committee members - Andrew Abbott, Graham Abbott, Katie Abbott, Allan & Susan Chapman, Edith Coe, Chris Gibbons, Pat Kelly, Russell Kerry, Jacqueline Love, Manday Miller, Stephen Toll & Sue Toll. Email: pc@redlingfield.suffolk.gov.uk Web: www.redlingfield.suffolk.gov.uk

HORHAM:

HORHAM VILLAGE HALL TRUST: The Annual General Meetings of Horham Village Hall Trust, Horham & Athelington Community Council and the Horham Village Hall Trust Bar took place on Wednesday, October 28th. The Chairman of the Village Hall Trust and Community Centre Bar, David Streeter, reported on a very satisfactory year. The Trustees were re-elected en bloc: David Streeter (Old School), David Whatling (PCC), Brian Cooper (PC), Brian Huggins (Baptist Church), Melva Huggins, Rod Tyrrell (Licence Holder), Peter Fisk, Karen Alderton (Bookings Clerk), Tim Debenham, Wendy Moyes and Margaret Streeter (Secretary). Melva Huggins decided to step down as Treasurer after many years; we will miss her careful and diligent work with the books. The Chairman of Horham & Athelington Community Council, Margaret Streeter, also reported on a satisfactory year. The committee for the year will be Margaret Streeter, David Whatling, Angela Wilkins, Gary and Julie Woodrow, Barry Hall, Lawrence Weaver, Peter Fisk, Don and Wendy Moyes, Brian Cooper and Tracey Ramsey.

HORHAM FIREWORKS: The fireworks at Horham & Athelington Community Centre went very well. Thanks to all helpers particularly Tequin and Charlie Cockett. The event raised more than £200.

FISH 'N' CHIPS: Pre-booking is essential for the monthly fish and chip nights at the Community Centre. Booking at either Horham Post Office or Community Centre.

WINNERS: Congratulations to Pip, Bernard and Alan who won the Horham Quiz.

Margaret Streeter

SCHEDULED BUS SERVICES (HORHAM):

MONDAYS TO FRIDAYS: Bus Service 482 operated by Galloway (except Bank Holidays)

Horham church	7.12	10.07	12.03	14.03	17.13
Diss Bus Station	7.45	10.40	12.40	14.45	17.50
Diss Bus Station	9.25	11.25	13.25	16.35	17.55
Horham Church	9.58	11.58	13.58	17.08	18.29

FRIDAYS: Farelina Bus & Coach's 475 Wingfield-Stradbroke-Hoxne-Diss service leaves Horham from opposite the church at 9.52am arriving at Diss Bus Station at 10.32am. The return bus leaves Diss Bus Station at 1pm arriving at Horham at 1.35pm. Full timetable in bus shelter opposite church.

HIGH SUFFOLK COMMUNITY TRANSPORT (REDLINGFIELD): There are once-a-week return minibus services from Redlingfield to Diss and Stowmarket.

DISS-FRIDAYS: The Worlingworth-Bedfield-Redlingfield-Eye-Diss service picks up from The Knoll at 9.42am arriving at Diss Bus Station at 10.07am. It returns from Diss Bus Station at 12.20pm arriving at Redlingfield at 12.45pm.

STOWMARKET-THURSDAYS: The Redlingfield-Worlingworth-Debenham-Stowmarket service leaves from The Knoll at 8.55am arriving at Stowmarket Market Place, Argos Store, at 10am. It leaves Stowmarket at 1.10pm arriving in Redlingfield at 2.15pm.

FELIXSTOWE ETC: During Summer Farelina's Diss-Eye-Framlingham-Woodbridge-Felixstowe service (route 170) calls at Redlingfield.

PUBLIC TRANSPORT CONTACTS: Bus timetables: 01473 265097; download:

www.suffolkonboard.com; order online: www.csduk.com/csd/forms. Home-to school transport: 0845 6066067; timetables: www.suffolkonboard.com. Bus route & service enquiries: 0845 6066067. Public transport information (Traveline): 0871 2002233 & www.traveline.info.

DIAL-A-RIDE MINIBUS (ATHELINGTON, HORHAM & REDLINGFIELD): The Borderhoppa, which has a capacity of one to 16 people and offers disabled access, is available Mon to Fri from 8.30am to 5pm. Bookings are taken Mon to Fri from 8.30am to 3.30pm 48 hours in advance. Tel: 01379 854800. Email: borderhoppa@redmoon.me.uk

KICKSTART: Kickstart is a moped loan scheme that could help you get a job or training place by loaning you a moped. The scheme is run by Suffolk ACRE. Tel: 01473 242500, email kickstart@suffolkacre.org.uk or visit www.suffolkacre.org.uk/main.php/transport/kickstart

LIBRARIES: Suffolk residents may join both Suffolk and Norfolk public libraries.

EYE: Buckshorn Lane, Eye, IP23 7AZ. Tel: 01379 870515. Open: Tues 9.30am-1pm; Wed 9.30pm-1pm & 2pm-5.30pm; Thurs 2pm-5.30pm; Fri 9.30am-1pm & 2pm-7pm; Sat 9.30am-1pm; Sun 10am-3pm.

STRADBROKE: Court House, Queens Street, Stradbroke, IP21 5HG. Tel: 01379 384768. Open: Tues 2.30pm-5pm & 5.30pm-7.30pm; Thurs 10am-1pm & 2.30pm-5pm; Fri 2.30pm-5pm; Sat 10am-12.30pm; Sunday 10am-3pm.

DISS: Church Street, Diss, IP22 4DD. Tel: 01379 642609. Open: Mon 9am-5pm; Tues 9am-1pm; Wed 9am-7.30pm; Thurs 9am-5pm; Fri 9am-7.30pm; Sat 9am-1pm.

MOBILE LIBRARY (HORHAM & REDLINGFIELD): The Mobile Library visits Redlingfield and Horham on alternate Thursdays - Dec 10 & 24; Jan 7 & 21; Feb 4 & 18. It stops at The Knoll, Redlingfield, 11.40am-11.50am and Horham Church, noon-12.10pm. To contact the mobile library, phone 07736 007604. Alternatively, you can telephone the office between 9am and noon, Mon-Fri, on 07872 676698 or email help@suffolklibraries.co.uk

HORHAM & ATHELINGTON COMMUNITY COUNCIL (opposite the church): Membership £10 for a family living at one address, (2 adults and children up to 16 years), £5 for a single adult, £3 for a junior 16/18 years (age must be proven). Membership fees run from Jan 1-Dec 31. Membership forms are available from the bar staff, or Angela Wilkins on 01379 384625. Community Centre club nights and opening hours: Wed, Fri, and Sat, 8pm-11pm (admission may be restricted when a private function is being held). Further information on membership or events from Angela Wilkins. Hall bookings via Karen Alderton on 01379 384754. Chairman - Margaret Streeter, The Rectory, Doctors Lane, Stradbroke, 01379 384363. Personal Licence Holder - Rod Tyrrell, 01379 388285.

HORHAM OLD SCHOOL & SOCIAL CLUB (next to church): Membership £5 per year, and the Club is open from 8pm till late on Tues and Fri. Chairman - Keith Hawes, Meadow Farm, Athelington, Eye, 01728 628608. Secretary - Margaret Streeter, The Rectory, Doctors Lane, Stradbroke. Hall Bookings via Pip Florance, 01379 384370, Laburnum Cottage, The Street, Horham. Personal License Holder - Keith Hawes.

REDLINGFIELD & OCCOLD WOMEN'S INSTITUTE: Meetings in Occold on the first Wed of every month except January when they are on the second Wed. President Caroline Miller, 01379 678871. Information on meetings on What's On pages of this magazine and at www.onesuffolk.co.uk/RedlingfieldPC/WomensInstitute/

NEW REEDING WOODS GROUP, POUND LANE WOOD, Redlingfield Road, Horham: Join a working party, or become a "Friend" by calling Mike Reeves on 01379 668179. This is community woodland, held in trust for all the villagers of Denham, Horham and Athelington.

HAPPY CIRCLE CLUB: Meets 2nd and 4th Thurs each month at Horham Community Centre. 2pm-4.30pm in summer and 1.30-4pm in winter. Members play scrabble and card games, have a birthday tea in May and go out for lunch twice a year. Violet Allum, 01379 388107.

95TH BOMB GROUP HERITAGE ASSOCIATION/RED FEATHER CLUB: Horham Airfield, IP21 5DG (see what's on for open days & events). Annual membership £5. Frank Sherman, 01379 678471 Email: frank.sherman@btinternet.com Web: www.95thbg-horham.com

95TH BOMB GROUP HOSPITAL MUSEUM, Shingle Hill, Denham, IP21 5EU (see what's on for open days & events). Tel: 01379 870514. Email: tony@albrow.org Web: www.hexpek.co.uk/95thbg-hm/index.htm

ROYAL BRITISH LEGION - STRADBROKE AND DISTRICT BRANCH: The branch meet at The King's Head, Laxfield (Low House), starting 11.30am on the first Thurs of the month for a meeting with speaker and lunch after. Hon Sec Jeremy Higgins, 01379 384300. The Branch are always happy to welcome new members and to provide welfare support where appropriate.

EYE ROYAL BRITISH LEGION WOMEN'S SECTION: The branch meet at Tacon Close Community Room in Eye for social events, with guest speakers and to raise funds on the third Monday in Feb, April, June, Aug, Oct and Dec at 7.15pm. All women welcome. The Secretary, Mrs C Elliott, 01379 644981.

ROYAL AIR FORCES ASSOCIATION - DISS AND DISTRICT RAFA BRANCH (covers this area): Meetings second Monday of each month at Diss Town Football Club, Brewers Green Lane. Details from Brian Ager secretary 01379 640337 (email ager.brian@gmail.com). Website: www.onesuffolk.co.uk/DissandDistrictRAFA.

THE EYE GRAMMAR SCHOOL FUND: This trust fund provides grants to young people and educational organisations serving those under 25 who live in Eye, Athelington, Bedfield and Horham. Special grants are available to cover expenses not met by the local education authority. For application form write to: Mrs L Bernard, Clerk to the Eye Grammar School Fund, 2 Lowgate Street, Eye, Suffolk, IP23 7AS, or 01379 870787.

AGE CONCERN - REDLINGFIELD REPRESENTATIVE: Jacqueline Love, Western Barn, Abbots Meadow, Redlingfield. 01379 678805, email@davidlove.f9.co.uk Age Concern website www.ageconcern.org.uk/

SUFFOLK ANIMAL RESCUE, 5 Cherry Tree Lane, Debenham, Suffolk, IP14 6QT. Has rescued cats, dogs, rabbits and other small animals seeking new homes. 01728 860937, suffolkar@hotmail.com Website www.suffolkanimalrescue.org

SUFFOLK FAMILY HISTORY SOCIETY - STRADBROKE & EYE GROUP: Meetings Stradbroke Community Centre on the last Tues of the month at 7.30pm (entry £2). 01728 860551, secretarystradbroke.sfhg@ntlworld.com Website: www.suffolkfhs.co.uk

THE EYE & DISTRICT MEMBERS GROUP OF THE SUFFOLK WILDLIFE TRUST: Works to raise funds and promote awareness of the Suffolk Wildlife Trust. Regular monthly evening meetings are at Mellis Village Hall. Tim Craven, 01379 668383. Website: www.suffolkwildlife.co.uk/

HOXON HUNDRED: Morris dancers and musicians practice on Wednesdays through autumn and winter at St Edmund's Hall, Hoxne at 7.30pm. Ron Ross, 01379 643563, hoxon@btinternet.com Web: www.hoxonhundred.co.uk

DENHAM VILLAGE HALL: Charges for hiring the hall range from £35 for all-day hires by non-residents to £7 for residents' children's parties. Electricity, which includes most of the heating, is extra, paid by a 50p and £1 slot meter in the kitchen. Bookings can be made with Tina Chenery (01379 870797). Hall management committee chairman: Mr D. Reynolds (01379 668797); secretary: Rose McMahon (01379 870346).

FRAMLINGHAM BRIDGE CLUB: Meets at the Conservative Club Mon at 7 pm to play duplicate bridge. All players welcome - single players get a game. Improvers Class on Wed 1-4 pm.

OCCOLD PRESCHOOL: For children from 2½ to 5 years. Sessions Mon-Fri, including a lunch club. Linda Jay at Occold Pre School, Occold Village Hall, Occold, Eye, Suffolk, IP23 7PL, 07790 605219, occoldpreschoolemail@googlemail.com

JUNGLE CUBS AND JUNGLE GIANTS: For children 1 to 11 years at The Gymnasium, Kerrison, Stoke Road, Thorndon, Woodbridge, IP13 7JG. Includes out of school and holiday clubs. Open Mon-Fri, 7.30am-6pm. Witney McMaster or Louise Austin 07834 483893.

EYE YOUTH CLUB: For 13-18 year olds on Tues and Wed 7.30-9pm at the Eye Youth Centre opposite the Church. Jonathan Pooley, 01379 870173 or 01379 870928.

FIRST EYE GUIDES: For girls aged 10 upwards. Eye Primary School on Tues 7-8.30pm. Wendy Spencer, 01379871125, or Sue White, 01379 870036.

1ST EYE SCOUT GROUP (INCORPORATING BEAVERS, CUBS & SCOUTS): All groups meet at the Scout Hut, Wellington Road, Eye. Group Scout Leader is Tim Passmore 07970 544362 or contact Joan Norman, 01379 890432 or joan_norman69@hotmail.com

BEAVERS: For 6 to 8 year olds - boys and girls. Wed 5.30-7pm. Karen Ruth, 01379 873544.

CUBS: For 8 to 10½ year olds. Fri 6-7.30pm. Sue Wood, 01379 669233.

SCOUTS: For 10½ to 14 year olds. Tues 7.30-9pm. Kate Broad, 01449 673472.

FARMERS' MARKETS ETC: **STOWMARKET**, Marketplace, first Fri of the month, 9.30am-1pm.

RICKINGHALL VILLAGE HALL, second Sat of the month, 9am-1pm. **STRADBROKE BUSINESS &**

ENTERPRISE COLLEGE, first Sat of the month, term time only, 9am-1pm. **DISS**, Marketplace,

second Sat of the month, 9am-1pm. **EYE COUNTRY MARKET:** The Town Hall Wed, 10am-

11am. **THORNDON FARMER'S MARKET:** first Sun of the month 10am-4pm, Thorndon Tea Rooms, Kerrison Conference Centre.

EYE CHURCH SHOP: Open Monday & Wednesday 11am-1pm and Fridays 11am-3pm and in December on Saturdays 9.30am-1pm.

VOLUNTEER CENTRE MID-SUFFOLK: There are usually up to 550 volunteering opportunities on offer within 200 voluntary organisations in Mid Suffolk. These include driving community vehicles, visiting and befriending and getting involved in community projects. The Centre at 5 Poplar Hill, Stowmarket, IP14 2AS, is open Mon to Fri 9am-2pm. Tel: 01449 612486. Email: volunteer.centre@optua.org.uk Web www.do-it.org.uk or www.optua.org.uk

EYE & DISTRICT VOLUNTEER CENTRE: You can get practical help or volunteer at 20 Broad Street, Eye, IP23 7AF. Open: Mon 10.30am-12.30pm & 1.30pm-3.30pm; Wed 10.30am-12.30pm; Fri 10.30am-3.30pm. Tel: 01379 871200.

CITIZENS ADVICE BUREAUX: Web: www.citizensadvice.org.uk/ and www.adviceguide.org.uk

DISS, THETFORD & DISTRICT CITIZENS ADVICE BUREAU:

DISS: Shelfanger Road, Diss, Norfolk, IP22 4EH Tel: 01379 651333 (Diss); 01842 764860 - welfare rights and money advice Thetford. Fax: 01379 640530 & 01842 750986. Email: advice@disscab.cabnet.org.uk Open: 10am-3pm Mon (drop in & telephone advice); 10am-3pm Tues (telephone advice only); 10am-3pm Wed (drop in & telephone advice) & 4pm-6pm (appointments & telephone advice); 10am-3pm Thurs & Fri (drop in & phone advice). Other Services at Diss: Lunchtime Tues local solicitors - by appointment only. By appointment Independent Financial Adviser.

HARLESTON: Information Centre, 8 Exchange Street. Open: 10am-noon Wed & Fri.

EYE: Customer Services Direct, Cross Street. Open: 10am-noon Thurs.

MID-SUFFOLK CITIZENS ADVICE BUREAU: STOWMARKET: 5 Milton Road South, Stowmarket, Suffolk, IP14 1EZ. Tel: 01449 676060 & 01449 676280. Fax: 01449 675634 - ring before faxing. Open: 9.30am-3.30pm Mon; 9.30am-3.30pm Tues; 9.30am-3.30pm Wed for telephone advice only; 9.30am-6.30pm Thurs; 9.30am-12.30pm Fri.

INFORMATION CENTRES:

EYE SERVICE CENTRE: 6 Cross Street, Eye, IP23 7AB. Open: Mon-Fri, 9am-5pm. A partnership between Suffolk County Council and Mid Suffolk District Council.

HARLESTON COMMUNITY INFORMATION CENTRE: 8 Exchange Street, Harleston. Open: Mon-Fri, 9.30am-3.30pm; Sat, 10am-1pm. Offers information covering this area.

MOST HOLY TRINITY CATHOLIC CHURCH, High Road, Diss. Parish Priest - Father Simon Blakesley, Diocesan Tribunal Office, 21 Ugate, Poringland, Norwich, NR14 7SH. 07946 390060, HolyTrinityDiss@aol.com Web: holyltrinitydiss.tripod.com/

SUNDAY MASS: 9.30am (sung); 10.30am at Quidenham (sung); 11.30am; 6pm. Holy Days: 8am at Quidenham; 10am; 8pm.

WEEKDAY MASS: Mon 10am; Tues 8am; Wed 10am; Fri 10am; Sat 10am. Morning Prayer 20 minutes before Mass on weekdays.

SATURDAYS: Rosary prayed 9.40am. Confessions 10.30am -10.45am or at call.

OCCOLD BAPTIST CHURCH, The Street, Occold. Church Secretary: Paul Harvey (01379 678764) paul_harvey@btinternet.com Deacon: Phillip Leeder (01379 678962). Friends & Neighbours: Pauline Harvey (01379 678764).

SUNDAYS: Services are at 10.45am and 6pm. The evening service is followed by refreshments and a chat. Every first Sun after the evening service at 7pm there is supper and you are very welcome to join us.

THURSDAYS: Bible study with opportunity for discussion at 7.30pm. On the last Thurs of each month Occold Baptists join with Diss Baptist Church, Denmark Hill, Diss, at 7.30pm. Second Thurs at Rishangles Baptist Church at 7.30pm.

WEDNESDAYS: Friends & Neighbours - for ladies, second Wed of each month at 7.30pm. A guest demonstrates a craft or speaks about their work or travels.

CHURCH OF ENGLAND: ALL SAINTS, Stradbroke, Church St; **ST ANDREW, REDLINGFIELD**, Church Road; **ST PETER, ATHELINGTON**; **ST MARY, HORHAM**, The Street. Rev David Streeter, The Rectory, Doctors Lane, Stradbroke, IP21 5HU, Tel: 01379 384869. Email: davidstreeter@suffolkonline.net. Website: information on church services is available at www.onesuffolk.co.uk/RedlingfieldPC/Church/

SERVICES (Holy Communion unless stated otherwise):

Nov 29 Athelington Advent Carol Service, 4.30pm.

Dec 6 Redlingfield Benefice HC, 10am; **Horham** Family Service, 11.15am.

13 Horham, 9am; Stradbroke Family Gift Service 10am; **Athelington**, 10am.

20 Horham Carol Service, 4.30pm.

21 Redlingfield Carol Service, 7pm.

24 Stradbroke Christmas Tree, 6pm; Communion, 11.30pm.

25 Horham 9am; **Redlingfield**, 10am.

27 Stradbroke, 9am.

Jan 3 Stradbroke, 10am; **Horham** Epiphany Gift Service, 11.15am.

10 Athelington Benefice Communion, 10am.

17 Horham, 9am; **Redlingfield**, 10am.

24 Redlingfield Morning Prayer 10am, Horham Morning Prayer, 11.15am

31 Horham, 9am; Stradbroke Parish Communion, 10am.

Feb 7 Stradbroke Benefice Communion, 10am.

14 Horham 9am; **Athelington**, 10am.

17 Stradbroke Ash Wednesday Communion, 7.30pm.

21 Horham 9am; **Redlingfield**, 10am.

28 Redlingfield Morning Prayer, 10am; **Horham** Morning Prayer 11.15am.

(Always check Service Times on your church/village notice board).

HORHAM BAPTIST CHURCH, Chapel Lane. Secretary, John Ladbrook, Potash Farm, Fingal Street, Worlingworth, IP13 7PD. Tel: 01728 628670. Web: www.horhambaptistchurch.org
Wheelchair access & space, hearing aid loop.

MAIN MEETINGS: Sunday: 10.45am - morning worship and Sunday school, family service
second Sunday in month, communion quarterly. 2pm - afternoon worship, communion first
Sunday in month.

FOR UNDER 18s: crèche (0-3); Sunday school (3-15); Megamix (5-11); Horhamania (11-16+);
Brownies; Holiday Club (3-11); Familytime (all ages); youth house groups.

LOCAL OUTREACH & COMMUNITY ACTIVITIES: Horhamania (11-16+); Brownies; Holiday Club
(3-11); parents & toddlers; Female Focus; seniors' meals.

GROVE EVANGELICAL CHURCH: Occold Village Hall, grove@grace-ea.org.uk

SUNDAY SERVICES: 10:45am inc Sunday School & 3pm.

MONDAYS: Ladies Evening -informal Bible study and activities 7.30pm.

GROVE YOUTH CLUB: Alternate Fridays 9-11 years 7.30-9pm & 12 plus 9-10pm.

HORHAM NEWS: The Coffee Morning on August 22 raised £256.72. Our thanks go to all those who contributed to this most successful event. The Sponsored Bike Ride brought in £830 to be equally divided between the Suffolk Historic Churches Trust and St Mary's Church Fabric Fund. The cyclists were Natasha, Joe and Jessie Lewer-Davidson, Daphne Harvey, John and Sandy Scent, Daniel Streeter, Lawrence Weaver and Michael and David Whatling. We are most grateful to the stewards in the church, the cyclists and the generous sponsors.

David Streeter



PAUL DURRANT & SON LTD

BUILDERS



Church Farm Bungalow, Rishangles, Eye, Suffolk IP23 7JX
Tel/Fax (01379) 678485

All types of work undertaken

**Extensions, Renovations, Alterations, Repairs,
Council Grant Work**

FREE ESTIMATES

PEST CONTROL SERVICES

Control, eradication of and advice on
Moles, Rats, Mice and Rabbits
also

Wasps, Hornets, Ants,
all crawling, flying and jumping insects

*For a friendly, professional and prompt service
call*

Mark Cotton

Mobile: 07806 875985 Home: 01379 852950

Out of hours service available - Fully Insured

If you would like to advertise or contribute to the magazine or have an event or organisation you would like featured contact: Evelyn Adey on evelynadey@e1603.fsnet.co.uk or 01728 628428 at Ivy House Barn, Southolt Road, Athelington, IP21 5EL; or Mike Ager on mike@gn.apc.org or 01379 678835 at Hidcote Lodge, Mill Road, Redlingfield, IP23 7QU. The next issue - Spring 2010 - is due to be published at the end of February. The final deadline is February 14.



Property Maintenance

Painting, Decorating, Tiling

Interior & Exterior

Fully Insured, Free Estimate

David Herwynen

07979 720 975 - 01379 388 708



Freshly baked home produce

Sweet and Savoury goods for all the family

In Eye every Friday

(outside the Handyman on the marketplace)

Tomato, basil & goats cheese tart

Bacon & onion quiche

Sausage rolls

Cornish pasties

Mocha banana choc-chip muffins

Double choc-chip muffins

Cherry & almond scones

A variety of delicious cakes

Orders taken

Amy Weiss

Tel: 01379 871226

Spend your time at Tasty Thymes

Just a brief selection from our
wide range of Tasty food

SPURLING & REMBLANCE



MOTOR ENGINEERS



MOT TEST CENTRE

Service and repairs to all cars, light commercial and 4x4's

Specialists in vehicle diagnostics

*Free local collection and delivery * Courtesy car available*

*Prompt attention assured * Competitive rates*

(01379)384689

Open 8:00 am -5:30pm Mon-Fri, 8:00am -12 noon Saturdays

Barley Hall, Laxfield Road, Stradbroke. IP21 5NQ

Located on the B111 7 - 1¼ mile outside Stradbroke, towards Laxfield

ENABLING INDEPENDENCE AT HOME

**Allied Homecare offers you the right level of care
and support so you can enjoy a more active
independent life at home including:-**

- **Housework, laundry, meal preparation**
- **Personal care**
- **Assisted bathing**
- **Live-in care**
- **24-hour support**



Telephone 01449 744080

We'll look after you

BRICK KILN FARM B&B

**A WELL-DESERVED WINTER TREAT
– B&B WITH A DIFFERENCE
ENJOY PEACE & TRANQUILITY,
COMFORTABLE, WELL-EQUIPPED
ROOMS. WARM HOSPITALITY,
WHOLE SOME FARMHOUSE FARE -
HOME-GROWN OR LOCALLY
PRODUCED, PLUS THE OPTION TO
BOOK A QUALIFIED THERAPIST FOR
HOLISTIC TREATMENTS AND
SAUNA. A TRULY ECLECTIC
RETREAT. MANY FOOTPATHS &
BRIDLEPATHS TO EXPLORE. BRING
YOUR OWN BIKE OR HORSE**



Therapies may be booked independently. For more information on therapies contact Linda on 01728 627939 or log on to www.holistictherapiesnaturesway.co.uk

For more information on B&B

Tel: 01728 627939 or

www.brickkilnfarmbandb.com

**Brick Kiln Farm
Worlingworth Road
Athelington
IP21 5EP**



Thyme for Food

Finest Quality Catering

All Requirements & Budgets

Catered For -

Parties

Weddings - Special Events

Corporate Hospitality

Wholesale Prepared Foods

We Use Only Premium Quality Produce

– Local & Organic Where Available

To Discuss Your Requirements Call

Marie

Worlingworth Suffolk IP13 7HX

Tel: 07789684434

www.thyme4food.co.uk

Printed & published by Evelyn Adey & Mike Ager for the villages of Athelington, Horham, Redlingfield and surrounds. The editors reserve the right to edit or refuse submissions. The views expressed in the magazine are not necessarily those of the editors.

Athelington, Horham & Redlingfield News cannot be held responsible for the quality of goods or services advertised in the magazine. This disclaimer is inserted purely for legal/technical reasons and can in no way be construed as implying criticism of any supplier of goods or services.

Susan Whymark Funeral Service Ltd



Independent and Family Run

- Funerals arranged by trained experienced staff in our friendly office environment or in the comfort of your own home
- Free transport for visits to registrars, our Chapel and other related appointments
- Bereavement support group
Open to all in need

Office & Chapel of Rest located at
The Old Stables, Chestnut Farm
Langton Green, Eye
Suffolk, IP23 7HL

Independent of Any Large
Corporation and Truly Owned
And Run by The Whymark Family

24 Hour Telephone Number **01379 871168**

www.susanwhymark.co.uk
email susan@susanwhymark.co.uk



Barley Green Garage

Laxfield Road, Stradbroke

IP21 5JT

Telephone 01379 388 947

Servicing . Repairs . Tyres . Exhausts . Batteries . Air-Con . MOT Testing

Our fully equipped workshop offers:

Servicing From Under £40

Tyres From Under £25

Batteries From Under £45

Air-Con Servicing From £20

We also offer MOT arrangement
(class 1,2,3,4 & 7)

**Courtesy Car or Local Collection
& Delivery Available**



ONLY CARRIED OUT ON VEHICLES LEFT
FOR REPAIR AND ALSO TIME DEFERRANT

Computer Services

In your own home

- Friendly Local Service
- Callouts anytime, 7 days a week
- New computers
- Home/business services
- Computer setup & repair
- Software supply & setup
- Broadband repair & tuning
- Website Design & Hosting
- Free friendly advice over the 'phone

Tristan Scott (BSc Hons)

M: 07837 205829

W: www.yvts.co.uk

E: sales@yvts.co.uk

(based in Redlingfield)

Yare Valley
Technical Services



Your *LOCAL* Taxi Service
4 & 6 seat vehicles
Any length of journey
Best value for airports

01379 669370

07795 264233

Petal Portraits - *Suffolk's leading location portrait specialists!*

Natural, relaxed photography that doesn't cost the earth - with no hard sell or obligation to buy.



Convenient....Affordable....Something different....

Natural, unposed photos from the comfort of your own home, garden or local park.

You and your children are more at ease and comfortable, and are surrounded with their own favourite toys.

Call us now on 0845 64 30 661 / 07795 088764

Visit us today @ www.petalportraits.co.uk

Email: jeff@petalportraits.co.uk



Safe & Sound
Hygiene and Pest Control

- Have you a problem with -
- Rats, Mice, Moles, Wasps or Rabbits?
- All typical Pests controlled.
- For ALL your Domestic / Commercial Pest Control.
- No obligation – free survey/quotes.
- Please call,
- 01379 788865 / 07809 226109 / 07518 731106

www.safeandsoundhygieneandpestcontrol.co.uk

EYE BOOKSHOP

SECONDHAND BOOKS BOUGHT AND SOLD

Broad Street, Eye IP23 7AF (*opposite The Handyman*)
Open Tuesday - Saturday

*We will call out to view large collections -
please contact us for more details*

e-mail: eyebookshop@btconnect.com or visit
www.eyebbookshop.co.uk

01379 870190

Lucy Keil

M.C.F.H.P. M.A.F.H.P.

Member of the British Association of Foot Health Professionals



Mobile Tel. 07828146298

YOUR RELIABLE LOCAL PLUMBER



Anglian Water Approved

Mark Jardine Plumbing & Heating



Oftec Oil Registered

- All Domestic Plumbing
- Full Bathroom Installation
- Domestic Heating, Radiators, Pumps etc.
- All Work Fully Insured & Guaranteed
- 24 Hour Emergency Call Out

Tel: 01379 672 904 Mob: 07854 924 801

New Haven, Tudor Court, Occold, Eye, Suffolk IP23 7PZ

The CMC Complementary Medicine Centre

The Complementary Medicine Centre
provides a full range of therapies.

***Free 15 minute
introductory consultations are available
with all therapists.***

The Gilchrist Unit, Hartismere Hospital, Castleton Way, Eye,
Suffolk IP23 7BH Tel. 01379 870707

www.compmed.co.uk e-mail: info@compmed.co.uk

01728 628233

Athelington Hall



Corporate



Log Cabin Holidays



Weddings

*We also specialise in Hog Roasts for up to 180 people on site or they can be delivered
Smaller function room available with kitchen for the smaller function*

Athelington Hall Horham Eye Suffolk IP21 5EJ
www.athelingtonhall.co.uk peter@athelingtonhall.co.uk

Cowhams
Car
&
Commercial

Servicing & Repairs
for all makes
New & Old



VOSA MOT Testing Station
petrol, diesel class 4 & 7.

CAR & VAN SALES

vehicles sourced if we don't have them in stock

Insurance Repairs, 24hr Recovery, Car Valeting.

Brakes, Exhausts, Clutches, Tyres & Batteries.

Air Conditioning
Service & Repair
Accident & Body
Repair Centre.

The Garage Fressingfield
Tel: 01379 388 999
www.cowhams.co.uk

BRICK KILN FARM
WORLINGWORTH RD, ATHELINGTON

LIVERY VACANCIES

PRIVATE SMALLHOLDING

NEW STABLES

SECURE PADDOCKS

SCHOOLING AREA

QUIET COUNTRY LANES

GOOD BRIDLEPATHS

QUALIFIED TRAINER AVAILABLE FOR
LESSONS/HELP

To discuss your requirements contact
Linda on 01728 627939

FRESH FREE RANGE EGGS

Poplar Hall Farm
Occold Road
Redlingfield
STALL AT GATE



For larger orders please
call 01379 678318

R COLE PLUMBING SERVICES

BEDINGFIELD

TEL: 01728 627108

MOB: 07961 271644

General plumbing
Free local estimates



Small Newly Built Boarding Cattery

Fully Licensed

Fully Insured

Fully Heated

Collection & delivery service available

Call: Angela/Mike On: 01379 388 979

www.hillcottagecattery.co.uk

Hill Cottage Cattery, Worlingworth Road
Horham, (Near Eye), Suffolk, IP21 5EF



If you need a tradesman, we can help

*** Free Estimates ***

- Bathroom suites
- Any Electrical Work
- A new house or extension
- Gas or Oil Boiler Service & Maintenance

Electrical Services · Boiler & Heating Maintenance · Building Maintenance & Refurbishment · General Building · Plumbing

MY Group, Fen Lane Farm, Watton Rd. Larling, Norfolk NR16 2AJ
Tel: 01953 497177 Fax: 01953 497160 Email: info@mygroupea.co.uk Web: www.mygroupea.co.uk
MY Group is a trading name of MY Boiler Services Ltd

Very special, delicious and unusual cakes made to order

Castles, fairies, dragons,
beautiful wedding and
birthday cakes.
Father Christmas
a speciality.

Liz Gibson-Harries
Rose Cottage
The Street
Horham

01379 384680 email: all@gibson-harries.fsnet.co.uk



Advertising rates are for four issues

Add costs/sizes are:-

1/6 pg £8.50 (60mm deep, 60mm across)

1/6 pg £8.50 (30mm deep, 125 mm across)

1/3 pg £16.50 (60mm deep, 125mm across)

1/4 pg £12.50 (90mm deep, 60mm across)

1/2 pg £25 (90mm deep, 125mm across)

A whole pg £50

The cost for a one off full page £12.50

Contact Mike Ager

Email: mike@gn.apc.org or Phone: 01379 678835

USEFUL CONTACTS

HORHAM & ATHELINGTON PARISH COUNCIL: Tel: 01379 384625

REDLINGFIELD PARISH MEETING (www.redlingfield.suffolk.gov.uk):
Tel: 01379 678835 Email: pc@redlingfield.suffolk.gov.uk

MID SUFFOLK DISTRICT COUNCIL (www.midsuffolk.gov.uk):
Tel: 01449 724500 Email: webinfo@midsuffolk.gov.uk
(0845 606 6067 & customerservice@csduk.com)

SUFFOLK COUNTY COUNCIL (www.suffolk.gov.uk):
Tel: 0845 606 6067 Email: customerservice@csduk.com

DISTRICT COUNCILLOR: Elizabeth Gibson-Harries
Tel: 01379 384680 Email: elizabeth.gibson-harries@midsuffolk.gov.uk

COUNTY COUNCILLOR: Guy McGregor
Tel: 01379 668434 Email: guy.mcgregor@councillors.suffolkcc.gov.uk

MEMBER OF PARLIAMENT (www.centralsuffolk.co.uk): Sir Michael Lord MP
Tel: 01728 685148 Email: mail@centralsuffolk.co.uk
House of Commons, London, SW1A 0AA

POLICE: (www.onesuffolk.co.uk/SaferSuffolk/MidSuffolkNorth/):
Our Community Police Officer is PC Tim Green & our Police Community Support Officer is Steven Long. Tel: 01284 774100 (Eye Police Station).
Email: midsuffnorth.snt@suffolk.pnn.police.uk

Non emergency calls: Tel: 01473 613500 Crimestoppers Tel: 0800 555 111
In an emergency dial **999**. You should dial 999 when life is threatened or people are injured, or if there is a crime in progress or an immediate police response is necessary. It is better to be safe than sorry.

OTHER EMERGENCY PHONE NUMBERS:

GAS EMERGENCY: 0800 111 999

ELECTRICITY EMERGENCY: 08007 838 838

ANGLIAN WATER EMERGENCY: 0800 145 145

REPORTING A PROBLEM: You can report problems relating to: abandoned vehicles; damage to street signs, litter bins; dogs; drainage; fly tipping; litter; noise; odour; rat or mice infestations; refuse collection; and smoke, fumes or dust; online using the onesuffolk website (www.onesuffolk.co.uk/reportaproblem). This is a partnership involving the police and councils.

HORHAM NEIGHBOURHOOD WATCH: Hav Wilkins Tel:01379 384625

REDLINGFIELD NEIGHBOURHOOD WATCH: Chris Gibbons Tel:01379 678169

NHS DIRECT: A 24-hour confidential telephone service. You can ring for nurse advice if you are feeling ill and unsure about what to do or for health information on particular conditions. Call 0845 4647 or visit www.nhsdirect.nhs.uk

DOCTORS: Fressingfield Medical Centre, New Street, Fressingfield, IP21 5PJ – 01379 586227 and Stradbroke Medical Centre, Wilby Road, Stradbroke, IP21 5JN – 01379 384220 (www.fressingfield-medical-practice.co.uk/). The Health Centre, Castleton Way, Eye, Suffolk, IP23 7DD – 01379 870689 (eyehealthcentre.co.uk/)

Suffolk County Council's **HOUSEHOLD WASTE RECYCLING CENTRE** at Brome: Opening times -
1 November to 31 January, 8am to 4pm; 1 February to 31 March, 8am to 5pm;
1 April to 30 September, 8am to 6pm; 1 October to 31 October, 8am to 5pm.

OTHER IMPORTANT PHONE NUMBERS

SUFFOLK TRADING STANDARDS: 01473 264859

CONSUMER DIRECT: 08454 040506
