
Athelington, Horham & Redlingfield News



Summer 2008

Issue no. 2

~ The ~ *Grey Gull* ~ Inn ~

*On the Shores of Beautiful
Loch Fyne, Argyll, Scotland*



“Gateway to the Mull of Kintyre”, we are also just one hour from the busy ferry port of Oban, and near Machrihanish Golf Course, Sea-Life & Sea-Bird Sanctuaries, as well as Inverary Castle and Jail, and the perfect location for ferry links to the famed isles of Arran, Islay, Jura, Mull, Iona and Gigha.



Our Brasserie Restaurant is open from 7 a.m. 'til late p.m., serving delicious home-made fayre, fine wines and more whiskies than you can imagine.

Ardrishaig is the start of the famous Crinan Canal, described as “the Most Beautiful Shortcut in Britain”. We have some of the finest sailing, golf, horse-riding, walking, cycling, diving and of course fishing in the UK. Ring us for travel advice – Scotland isn't that far!

2008 “Gull Value Specials”

Bed & Breakfast per DB/Tw, 2 Persons sharing – Oct–Apr £60, May–Sep £75

Dinner, Bed & Breakfast per DB/Tw, 2 Persons sharing – Oct–Apr £75, May–Sep £95

(mention this magazine when replying)



The Grey Gull Inn, Glenburn Road, Ardrishaig, Argyll PA30 8EU

www.greygull.co.uk • tel 01546 606017 • thegreygullinn@yahoo.co.uk
fax 01546 606167 • fax 01546 606323

A big thank you to everyone who helped make the first issue of your village magazine a success. Special thanks to all those who delivered copies to – what we hope – was every home in the area. If you know of someone we missed or someone who would like a copy tell me or Evelyn (our contact details are everywhere).

I was pleasantly surprised – to say the least – by the positive response to our first effort. Hopefully, we will continue to improve as we go.

Special thanks to Rev David Streeter who kindly offered to print the magazine and best wishes for a speedy recovery. I hope he'll be home from hospital by the time you read this.

Despite the problems we had printing the first issue, which meant some people in Horham got copies up to a week before those in Redlingfield,

my technical consultant – wife and boss Jan that is – says it will be a breeze this time so we'll keep on the way we are, for a while at least.

The 250 copies we had planned on distributing were not quite enough it seems and our circulation is now up to around 300 for this issue.

I must, however, apologise to Frank Sherman of the 95th Bomb Group Heritage Association/Red Feather Club whose email address is frank.sherman@btinternet.com not the gibberish printed last issue and to advertiser First Lesson whose mobile number I got wrong in the first issue.

Hopefully, we'll keep the mistakes to a minimum but there is always the chance of human error. Anyway, thank you to everyone who has contributed to our second issue. I hope you enjoy it and please feel free to contribute – this is your magazine. *Mike Ager*

COME TO A PARTY: Stradbroke, Horham, Redlingfield and Athelington are joining for an end of summer bonanza on Saturday, **September 6**, in the marquee at Athelington Hall. There will be music, a hog roast, drink, a barn dance and a quiz or treasure hunt for the young. There is plenty of space so invite all your friends and relatives to come and share the fun of our Suffolk villages. Any profits will go to the Red Cross and to our four village churches, specifically for repairs and renovations of the buildings. Put the date in your diary, more details later. *Evelyn Adey*

If you would like to advertise or contribute to the magazine or have an event or organisation you would like featured contact: Evelyn Adey on evelynadey@e1603.fsnet.co.uk or 01728 628428 at Ivy House Barn, Southolt Road, Athelington, IP21 5EL; or Mike Ager on 01379 678835 or mjager99.fsnet.co.uk at Hidcote Lodge, Mill Road, Redlingfield, IP23 7QU.

Printed & published by Evelyn Adey & Mike Ager for the villages of Athelington, Horham, Redlingfield and surrounds. The editors reserve the right to edit or refuse submissions. The views expressed in the magazine are not necessarily those of the editors.



Sun shines on big day

The Grand Open Day at Horham Airfield on Sunday, May 11, was a great success, thanks to the glorious sunshine, after last year's atrocious weather. The Red Feather Club Museum, Base Hospital Museum, Denham Village Hall (former Guard Room), Horham and Denham churches were open to more than 1,000 visitors.

Many new displays were on show at the museums to record the US95th Bomb Group who were stationed at Horham from June 1943 through to May 1945. Displays included restored military vehicles, a US Army field hospital, US Airborne troops and stalls from other airfield associations.

Visitors from the US included Janie McKnight president of the 95th Bomb Group Memorials Foundation along with treasurer Grace Hammesfahr, her son Ernie and Russ Askey whose father, also Russ, served as a navigator, completing 35 missions between April and August 1944. This was Russ's first visit to Horham.

A USAF Colour Guard (pictured) from Mildenhall paid tribute to the

617 young men who lost their lives whilst serving at Horham during World War Two. Speeches paid tribute to the veterans, their families and the 95th Bomb Group Heritage Association who have restored The Red Feather Club to honour these young men. The association is raising money to rebuild another building on the site to use as a function room for school groups and other visitors to the former NCOs' social club.

A flypast by the RAF Battle of Britain Flight Lancaster and Hurricane gave the crowds a treat in the afternoon over the main runway. A collection was held which will be donated to the RAF Benevolent Fund.

The Committee of the 95th Bomb Group Heritage Association wishes to thank all those who supported the Open Day and welcomes anyone to The Red Feather Club to see the restored buildings and displays. Contact James Mutton (chairman) on 01728 860930 or Frank Sherman (press officer) on 01379 678471, website: www.95thbg-horham.com

James Mutton

Wash Farm's wildlife

My Goodness! How times have changed. The management of the countryside for the benefit of birdlife now takes precedence over the efficiency of cropping, a wholesale change since the end of World War Two.

Redlingfield and other parishes in our part of Suffolk, have had a history of small and medium-sized yeoman farms, with a mix of arable and livestock activity, so that we have a better patchwork of fields and established hedgerows. Also, our village housing is of low density, with many generous-sized gardens, which can give good birdwatching rewards from garden feeders. With the addition of environmental schemes on our farms generally, there is good reason to think that some of the declining bird populations can be helped to recover.

One of everyone's favourites, the barn owl, is being well-looked after in these parts recently. Hundreds of

boxes have been positioned to help with a lack of nesting sites, not that a very productive pair at Southolt need any help. A pair nesting in some ivy, just off the roadside by Manor Farm, last year produced one in the first and four in the second brood, and I am hoping they might spread our way. It is the usual thing for the offspring to

be forced away to seek new territory up to a mile away.

Two years ago, I erected three owl boxes, one is in the small field opposite Rookery Drive and one by Caroline's wood, about 3-4 metres high in oak trees, and in June a registered recorder is coming to check if they are occupied. The first year, stock doves made a home in both, which apparently is the usual

thing before the second year, when a barn owl will claim it first. I am very hopeful as there have been a few sightings of a pair hunting along the Wash Road, or Rookery Lane as it is now called.

Trevor Edwards



RED DEER: A herd of red deer seems to be spotted regularly in these parts. The herd size varies from two or three to as many as twenty, and I don't think they are doing much damage as they are always on the move. Others may disagree! They have been around for so many years now, maybe escaping from Helmingham Park originally, I suppose we could call them roaming residents. A friend of mine saw a muntjac in his garden in Worlingworth last week and they are the ugliest deer you will see but apparently make excellent venison!

Trevor Edwards

Memorial to the fallen

In Redlingfield churchyard there is a stone memorial to ten soldiers, from the village who sacrificed their lives during the 1914-1918 War.

I decided to do a quick search of these men on the Commonwealth War Graves Commission (CWGC) website (www.cwgc.org) but it is difficult with just a name to go on so I also cross referenced these details with the 1901 and 1881 censuses for Redlingfield (www.1901census.nationalarchives).

Those listed on the memorial are:

Gunner Albert Cracknell: He was not in the CWGC but I did find several Cracknells living in the village and an Albert who was 12 in 1901.

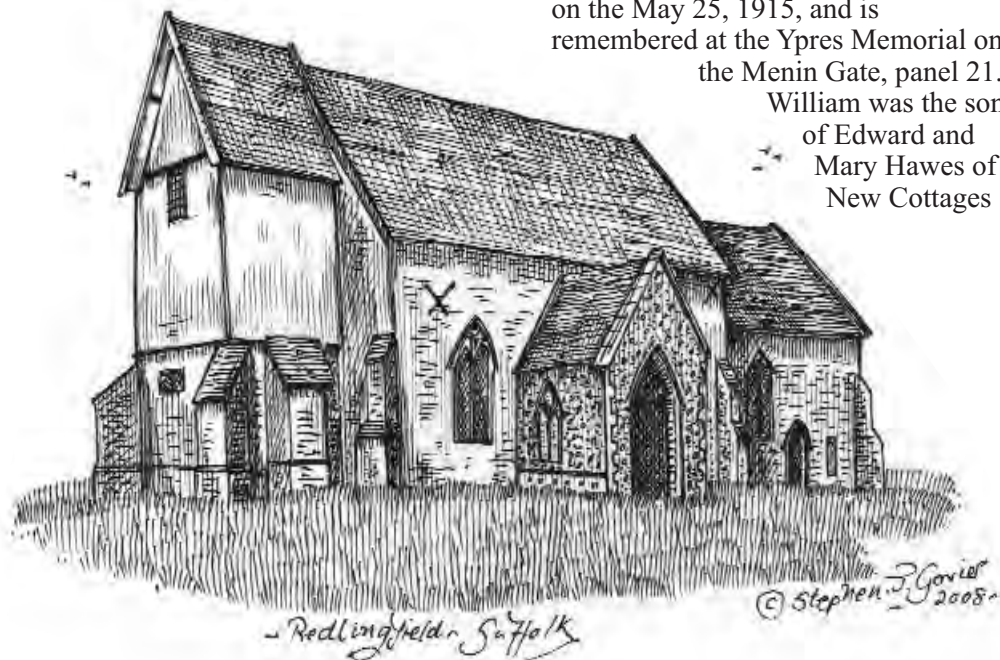
Private Harry Lincoln: I found details of two soldiers – one seems more promising and was a private in the Norfolk Regiment, killed on October 23, 1918, and recorded on the Vis-En-Artois Memorial. I found a Harry L Lincoln aged 13 in 1901, who was born at Horham and lived in Eye.

Private William Howlett: One soldier seems to fit the bill and was in the Suffolk Regiment and was killed on October 13, 1915, and is recorded at the Loos Memorial.

Sergeant Thomas Wilson: No details found in the CWGC.

Private William Hawes: He was aged 17 and served in the 1st Battalion of the Suffolk Regiment, he was killed on the May 25, 1915, and is remembered at the Ypres Memorial on the Menin Gate, panel 21.

William was the son of Edward and Mary Hawes of New Cottages



soldiers of Redlingfield

in Redlingfield. I found a William aged three in 1901.

Private Ernest George Lawes: He served with the Bedfordshire Regiment and was 22 when he died on September 5, 1916. He is remembered on the Thiepval Memorial. Ernest was the son of Harry Lawes and his wife Mary Ann, who lived at Cranley Gate in Redlingfield. I believe Harry was the son of William Lawes a farmer in Mill Road, who had come from Hoxne.

Private Frederick Cracknell: No details found in CWGC but there was Fred Cracknell aged 13, from Redlingfield working as an agricultural labourer.

Private Reginald Lister: No details found in the CWGC but I found a Reginald aged 5 in 1901 from Occold.

Private Walter Mayhew: He served with the Suffolk Regiment and was killed on April 28, 1917, aged 26. He was the son of Robert Mayhew and his wife Hannah of Horham Road in Redlingfield and is remembered on the Arras Memorial. I found a Walter

Mayhew from Athelington aged 10 in 1901, living in Redlingfield.

Sapper Frederick Bayles: He was serving with the 19th Division of the Royal Engineers and was killed on Armistice Day – November 11, 1918, the official end of World War One and the day hostilities on the Western Front ended at the “eleventh hour of the eleventh day of the eleventh month.” He is buried at the St Sever Cemetery Extension in Rouen. I found a Frederick aged 8 in 1901, born at Diss and living in Stuston.

I have also produced a drawing of Redlingfield church – next time Horham church. If anyone would like to send me a list of the Athelington and Horham War Memorial details, I will do some research on those listed.

If anyone has details of any of these service men, photographs or memorabilia or any other local history please pass them on to me, Mike Ager or Evelyn Adey. I can be contacted at Maynards, Hoxne, Eye, Suffolk, IP21 5AH. Email: printssg@yahoo.co.uk

Stephen Govier

FLOWER FESTIVAL: Athelington Church needs some repairs to the tower so the PCC is embarking on various fund-raising projects. There will be a Flower Festival over the weekend of June 28, 29, & 30 from 10am to 6pm with the theme The Miracles of Jesus. The church will be full of gorgeous flowers and there will be refreshments on the Saturday and Sunday. The PCC hopes people will visit and bring lots of friends and relations. Part of the costs of the repairs will be covered by grants from the Diocese and the charities; Suffolk Historic Churches Trust and the national Historic Churches Trust. Both charities are dedicated to preserving our beautiful churches. Athelington is particularly known for the medieval carvings on the pew ends. The church will also have a bric-a-brac stall at Horham's Bygones rally.

Googling some old folk

Anyone who spends any time online will tell you that you can end up on some rum old sites when pootling about on the internet.

I can't even remember what words I put into the Google search engine alongside Redlingfield to find myself at, what at first, looked like a blank page. When I eventually scrolled down I found I was on a site selling British folk music and a lot of it was from Suffolk. And, even more surprisingly to me, a lot of it was from this part of the county.

Instead of running for cover – I wouldn't say that I was exactly a big folk fan – I persevered and found the reference to Redlingfield under a bio of Eye-born Ted Chaplin, who lived, among other places at Cranley Green, Wingfield and Mellis. The piece on him included the gem about his singing: "Well we used to get down to old Redlingfield Crown; what else was there to do?"

Now I was interested. Sadly there were no further mentions of Redlingfield on veteran.co.uk but there were reminiscences about the Hoxne Swan and Ivy House in Stradbroke among others.

One artiste – Bedingfield-born drummer Cecil Fisk – probably

deserves a book just on his army career. In 1939, he volunteered aged 19, for the army and served in Nigeria, Sierra Leone and Egypt. He was captured in Libya and spent two years in an Italian prisoner-of-war camp before escaping across the Alps into Switzerland. He settled in Southolt Green and then Worlingworth. And some of the songs he played at the Southolt Plough,

Brundish Crown, Dennington Bell and Worlingworth Swan can still be heard on CD.

Worlingworth melodeon player and stepdancer Walter 'Font' Whatling, born in 1919, and Southolt singer and stepdancer Charlie Whiting, born in



EYE CHURCH FAIRTRADE SHOP: I've done two really interesting speaking appointments recently – one in Framlingham as part of their Fairtrade Town launch, and the other to 180 High School children at East Bergholt School. At the school I was struck by the level of interest and knowledge the children displayed, it is humbling to have the chance to inspire others – especially the young people who will hopefully keep the Fairtrade ball rolling over the years ahead. Do keep inviting us to your events and try to come to the shop! Eye Church shop is open Monday, Wednesday and Friday every week, 11am-1pm. With the addition of Ipswich to Beccles, Framlingham and Lowestoft, Suffolk now has four Fairtrade Towns. For Fairtrade information contact 01379 384558.

Sue Watson



from our village pubs

1905, are other locals featured on the CDs of rural songs.

But the biographies and extracts from interviews are really worth a read on their own. Anyone who thinks the world is a more violent place should take heed of George 'Spider' Ling, born in Blaxhall in 1904. "There were more fights than halfpennies ... The pubs weren't supposed to open all day, but there was only one copper for miles and if he stopped by he'd come in for a drink."

And you had to make your own entertainment. As George says: "One night a bloke said ... 'I can't, dance or recite but just to keep the company amused I'll fight the best man here.' Cor, there was some blood flying, I'll tell you. If ever a stranger came in the pub – oh dear, all eyes would be on him."

Now, I'm not saying reading about these good ole boys has converted me into a folkie but there is something very appealing about the titles of the CDs – *First I'm Going To Sing You A Ditty* and *They Ordered Their Pints Of Beer And Bottle Of Sherry* for example.

So I might have to buy my dad *Comic Songs Sung in Suffolk* and perhaps just borrow it for a listen. After all who could resist tracks such as *I'll Be Up Her*

Way Next Week, I've Got A Good Idea Where It's Gone To and *Beery Bob*.

Now this won't be news to any folk fiends out there because the Veteran label, which released its first tape in 1987, was set up by John Howson, who is "the leading specialist in the traditional music and song of the British Isles", to make available recordings he collected in Suffolk.

However, it was news to me – the closest I've come to traditional Suffolk song was my grandad talking about "rum owd boys" who liked a song and a pint or two.

John Howson is also co-founder of the East Anglian Traditional Music Trust, which aims to preserve and promote traditional music, song and dance in the Eastern counties. It can be contacted at The Old Stables, Museum of East Anglian Life, Crowe Street, Stowmarket, Suffolk IP14 1DL its website is www.eatmt.org.uk/

If you have reminisces or even pictures, of local pubs or characters we'd love to hear from you. I'm sure our readers would love them too.

Mike Ager



(Pictures: Veteran CD covers)

Small spiky friends in

“I see the hedgehogs are leaving their calling cards again” I said to the wife, after spotting the little black markings on the lawn. It’s always a sign that the hogs are starting to emerge from their long winter hibernation.

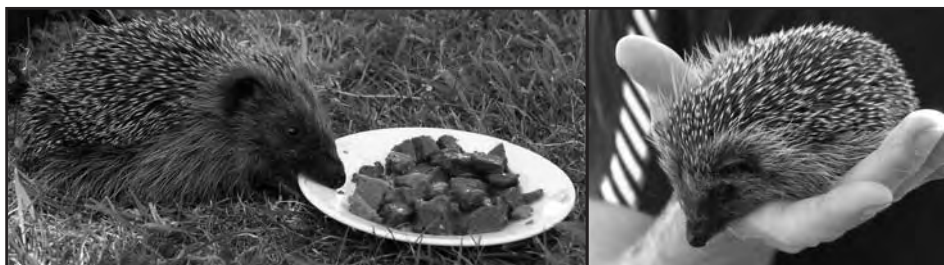
It tells me it’s time to start putting their food out again, just to make sure they get back up to their healthy weight. You see, it’s nice to have such a helpful, curious little animal in the garden helping to keep some of those plant-destroying critters at bay. They don’t eat just slugs but will eat snails, beetles, caterpillars, earwigs and earthworms amongst other things.

The truth is we can do a lot to help these little guys without much effort. At this time of year, when the garden is bursting into life in a chlorophyll-

packed green splendour, we all need to get the mowers, trimmers and brushcutters out.

However, the problem is that hogs just love that little overgrown patch of undergrowth to rest up during the day. So before you run over it with your mower, or attack it with your trimmer, please just have a quick look through to see if there are any hogs sleeping. A huge number of hedgehogs are taken in by rescuers and fosterers each year due to garden machinery incidents.

If you want to do more for these secretive little animals you can try leaving a pile of logs in your garden with a cavity for the hog to make a nest in and some dry leaves for nesting material. It is best made in a secluded part of your garden and may



ALL THAT JAZZ: The arrival of Stradbroke’s Real Ale & Jazz Festival is usually the signal for the heavens to open but this year broke the trend with the sun shining on the three-day event at the Queen’s Head Inn. The 11th festival was opened by Stradbroke Primary School Brass players and featured festival favourites Bob Kerr and his Whoopee Band. Radio Stradbroke broadcast the whole event live on the web and more than 100 tuned in from as far away as Australia. There was also a New Orleans inspired church service in Stradbroke’s All Saints Church on Sunday. The pub’s marquee will be in use again on September 26-28 for The “Queen” Presents – a weekend of comedy, rock ‘n’ roll, folk music and a barn dance.

the garden

attract a pregnant mother during the late spring/early summer.

You might want to put a little food out for them too. They eat a multitude of foodstuffs and some of them might surprise you but one thing is for sure, please avoid cows milk as hogs are lactose intolerant. You can feed them on tinned cat or dog food (avoid fish flavours but they like chicken) but put it out at night and take it away in the morning as this avoids attracting flies (and the maggots can harm the hog). Put the food under a ridge tile or cover propped up on house bricks to keep dogs and cats from getting to the food.

You can feed them on any of the following: dried cat/kitten food (no fish), chicken, mince, mild cheese, chopped peanuts/raisins/sultanas, banana, apple and scrambled egg. But by far the most important thing in summer is water. Lots of fresh, clean water as hogs do a lot of drinking.

Why not get out in your garden after dark and have a listen for rustling in the undergrowth or two males huffing at each other whilst fighting over the females? They are funny little characters and can be quite entertaining.

Oh, and don't believe all the stories about their fleas ... yes, they do have fleas but they are predominantly specific to the hedgehog and don't live on humans or dogs and cats.

So, remember, look before you cut this summer ... there may be a hog about!

Stuart Brierley

NEWS IN BRIEF

FUNDS RAISED: The recent coffee morning at Western Barn in Abbots Meadow, Redlingfield raised £265.90. The proceeds have been split between St Andrews Church in Redlingfield and the village's Doorstep Green project. David and Jacqueline Love, who hosted the event, would like to thank all those who supported it and those who provided cakes, books, raffle prizes, produce and much more.

POTS PLEASE: I grow plants to sell and donate to charity sales and often run out of flower pots. I should be grateful for any unwanted pots – not the smallest but any of four inches or over would be great. I could collect, or you are always welcome to call here. Evelyn Adey, 01728 628428.

TIME CAPSULE: Judging of the New Reeding Woods Group's time capsule competition has been delayed, but will be completed soon, so submit your entry now. The capsule will be buried alongside the new display board at the Autumn Open Day, on September 20 – put the date in your diary.

RAF CELEBRATION: The Diss & District Branch of RAFA (Royal Air Forces Association) – which covers this area – is planning a major event to celebrate 90 years of the RAF. It will be on Sunday, October 12, at Diss Town's football ground. Any group or individual who wishes to take part should either phone 01379 853967 or email dissrafa@mail.com

Change for the better?

There is much talk of instituting a Unitary Authority in Suffolk.

The government wants all counties to have unitary authorities and the boundary commission is working on this.

The proposal raises many questions. How many authorities in Suffolk? How should the county be divided? Should it be divided at all? Should there be local administrative offices?

One proposal is for a single elected authority with scattered offices of civil servants. Alternatively there could be three elected authorities, Ipswich and its surrounds (including Felixtowe), West Suffolk and East Suffolk. Many who remember East and West Suffolk divisions of the past are unhappy with this solution. It seems to me it is important to have accountable, local representatives whatever the shape of the authority.

This could be achieved by increasing the importance of parish councils; they could be properly elected, given a sizable budget and empowered to take decisions such as local planning considerations, local waste disposal, alternative energy facilities and so forth. It could mean that smaller councils would band together, at least for some issues.

I hope discussions will focus on what is best for Suffolk and not on what the Government thinks looks neat – nor on what political parties think is in their interests. National and, to some extent, local politicians seem to focus on what will best discomfort the opposition, who can hurl the nastiest insults. Partly it is just what happens during elections but I wish I felt confident that any of them really think about the people, and the country.

Evelyn Adey

NEW REEDING WOODS GROUP: The founder chairman, David Flowerdew, retired after five years of sterling service. David's single-minded ambition for a community woodland and his enthusiasm for the project have ensured the success that we have achieved so far. He remains a supporter and 'friend' of the group, and we thank him for all his hard work and look forward to seeing him at future events. At this year's agm Elizabeth and Grenville Clarke, from the Green Light Trust, updated us on their progress. The trust was set up in 1993 and has helped more than 46 groups plant their own community woodland. We were the 12th group to sign up. 29 woodlands in Suffolk have now benefited from their help. The evening concluded with our regular cake auction and raffle. David Mitchell was unanimously chosen as our new chairman and we are planning a busy year of activities at Pound Lane Wood in Horham. Since the agm we have planted wildflower plugs in the meadow area and along the rides. Mulching the trees to keep the weeds down is an ongoing task. A work party to prepare stools and willow plant supports for our display at the Horham Rally has just taken place. The group's search for a corner of land in Denham, so we achieve our aim of woodland stretching across the three parishes, continues. *Michael Reeves*



The sun shone on the first visit of the Rural Coffee Caravan Information Project to Redlingfield in May (pictured). It was a big hit with 20 villagers visiting it for coffee, tea, cakes and information. It will visit on Tuesdays, June 17 and August 19 in the morning and on the afternoon of September 3. Hope to see you there. **Mike Ager**

Suffolk as she is spoke

“**D**o you come here together.” The words as much as the accent mark the mother calling her children on the beach at Southwold as a Suffolk native.

“Do” is an all-purpose word in Suffolk [and Norfolk]. One sentence I am fond of quoting is: “Do he do as he do do, do you let me know.” For those unfamiliar with the language of this part of the world it translates into: “If he continues behaving in that way please inform me.”

I would also like to claim for Suffolk the song once beloved of rugby teams – “The Foggy, Foggy Dew.” There are two reasons. One is it refers to weavers – a trade which was common in the county. But the second is more compelling – “dew” rhymes with “too”.

Some dialect words were probably used throughout England centuries ago. A heron is a harnser in Suffolk

and is probably the word Shakespeare would have used. I think he was unlikely to have written “can’t tell a hawk from a handsaw”. I bet he wrote harnser and someone changed it later.

Some words are dying out of use in this area. Has anyone come across a seesaw called a teetertorter? It was once common in these parts and is still used in New England, where words which would have been familiar to the original colonists can still be heard.

You will gather I am rather fond of Suffolk and I have a number of books about the dialect. Some of titles give a flavour of how we used to talk about here – *Sloightly on the huh!*, *Thass a rum owd job*, *Dew yew keep a troshin* and *Mighta bin wuss*. If anyone has any difficulty translating them just ask an old native. You can easily recognise us. We have binder twine tied round our trouser legs and straw in our hair.

Brian Ager

Stories from a country

Many of the visitors who come to St John's in Denham are looking for information about their ancestors, and since the old registers have been sent to the Records Office in Ipswich, we are unable to help them.

The churchyard often appears overgrown. To maintain the wonderful variety of wildflowers that grow there, and encourage seeding, we have to leave the swathe until late in the year before cutting. This means that visitors searching for particular headstones find it difficult. Frequently the stones have fallen or are covered in long grass and brambles or have even been buried themselves by a covering of leafy thatch. A decision was made to survey the churchyard, and it came to us to visit the Records Office to discover who is lying in this remote corner of Suffolk.

The oldest records, from 1708 until 1813, had been transposed from the ancient registers and were presented to us on film, clear and easy to read.

Every year the listings included many infants, and frequently it looks as though whole families have died within days or weeks of each other, although without searching the births and marriages registers we cannot be certain of this. Only the most important members of this rural society are acknowledged as householders or gentlemen, and there is no way of knowing with the limited information that we have gleaned so far how old most of those interred were at their death, or how hard their lives had been or even what the cause of death was!

We spent five hours at the record office, and we still have 157 years to record. Slowly local names are appearing in the listings, and our attention is caught as we watch the unfolding story of this small village, the man killed by a cart, the child who was 'base born' (illegitimate), and the Gentleman from Stoke Ash buried in "ye Isle of this Parish formerly belonging to his ancestors".

REDLINGFIELD NEIGHBOURHOOD WATCH: Your committee had its quarterly meeting recently, considerably delayed. There was discussion about how to react to unwelcome prowlers. If in a potentially threatening or uncertain situation dial 999 and get the professionals out post haste. In the event that there is reluctance to use the 999 service then contact a member of the Neighbourhood Watch committee and they will make the call, in any case it's useful to let the committee know what is going on. For several years we have relied on circulars to distribute or seek information and they average out at about 11 a year. If anyone would prefer to receive by email please let me know at Chris.gibbons@virgin.net If you have ideas, question etc. please let your committee know: Neville Butcher, Sue Chapman, Edith Coe, Chris Gibbons (01379 678169).



Chris Gibbons

churchyard

Now to begin unravelling the story from the other end, so we have been down to the churchyard, clearing the stones, and reading their stories. There is an exiled Serb killed in a road accident in Occold in 1956; a Mariner, a stoker First Class on HMS Cumberland, who died in 1918; and the huge stone dated 1738 of the Stoke Ash gentleman who's dedication is in Latin, and who is described as an armiger, which we understand to mean he was a squire. This is a work in progress, and we are looking forward to discovering more.

Our young grandsons tell us that graveyards are where dead people sleep, and as the wind whispers through the trees that surround St John's it is a peaceful place, with primroses, cowslips, violets and celandines underfoot, we trust they are at peace. If you know the stories of any that lie here please do let us know.

Sadly, our peaceful little church is once again in need of repair. The west wall has been showing signs of movement for some time and action now needs to be taken to stop the building deteriorating past the point of no return. There is a possibility that the organisations that gave grants to rebuild the chancel arch will help to preserve this historic building, but the village must play a part – there needs to be a desire to keep this important place in our community alive, not only for ourselves, but for future generations.

Margaret Reeves

NEWS IN BRIEF

REDLINGFIELD HEDGEROW

SURVEY: As trees come into leaf our survey team can get cracking. May 17 saw an introductory session at Thorham Walks where there was expert guidance into the mysteries of plant recognition. Anyone interested in joining the survey or finding out more about what is involved contact a village committee member or Chris on chris.gibbons@virgin.net or 01379 678169.

MORRIS DANCERS: The Mayday sunrise was seen in by Hoxon Hundred dancers at Fair Green, Diss. There was even a crowd to watch the proceedings. Their summer programme includes pub dance outs on Wednesday evenings (see what's on) and: Ipswich Riverside Folk Weekend, June 14; Hoxon Hundred 25th birthday party at Horham, June 21; Diss Carnival, June 22; on Saturday, July 19 they will be dancing with Haughley Hoofers in Diss in the morning and making appearances at Stradbroke Fair and Bressingham in the afternoon. They will also be visiting Lof in the Moselle valley for a week.

FAIRTRADE ON THE ROAD: Eye Church Fairtrade Shop will be at Fanningham Village Fair from noon onwards on Saturday, June 5; Gislegham Church Arts/Crafts event, 10am-5pm on Saturday, June 14 and Sunday, June 15; Framlingham Mid Summer Madness on Saturday, June 21 (see useful contacts & story for shop opening hours).

Your County Councillor reports . . .



THE subject of a unitary authority is one that many of us feel a decided lack of interest in.

The bid by Ipswich Borough Council to take responsibility for education, libraries, the care of the vulnerable (both young and old) has no relevance for people living in Redlingfield. And of course to a certain extent this is true.

But wait a moment. If Suffolk is broken up into two or more parts what would be the effect. Well for a start there would have to be a new “stand alone” Fire & Rescue Service. This means a new board, new officers (and probably offices) and the right to set a precept. If there is one unitary authority for Suffolk then all the local government services would be delivered by one council.

As Suffolk County Council provides 80 per cent of these services already it would be easier and cheaper to go down this route. The money saved to the council tax payer is estimated at about half of the amount that Mid Suffolk currently levies.

The idea from Suffolk and Mid Suffolk propose local neighbourhood forums (on which parish and town councillors would sit). These would have their own budgets and would have special responsibility for planning, licensing and rights of way.

So what is on offer is the continuation of quality local government services and local say on important matters.

Guy McGregor 01379 668434

Your Community Police Officer reports . . .



NOW the evenings are lighter please remember to secure garden equipment and sheds after use. This is the time of year that thefts of lawn mowers and garden tools

often increase. Shed alarms can be purchased from your local Police station to help improve security.

Since my last report there have been two crimes in the area, the theft of batteries from temporary traffic lights in Redlingfield and damage to a parked car in Horham.

A property photographing scheme has been introduced, which allows householders to have items of value in their homes photographed and recorded on a compact disc. The scheme is run by the Mid Suffolk Crime Prevention Panel and details are available from the Crime Reduction Officer on 01473 383410.

The Police have a Community Intelligence Hotline where information can be left regarding local offences. The number is 01284 774029. You can leave your details or be anonymous, but please help us to make your community even safer. I would like to remind all of you who have yet to sign up to Police Direct of the value of doing so. Register for free and you will receive either an email or text message informing you of any incidents in your area. To sign up call 01473 613997.

I wish you all a safe and pleasant summer.

*PC Tim Green,
Mid Suffolk North Safer Neighbourhood Team*



The next big village event in Redlingfield is the annual BBQ on the Doorstep Green (last year's event is pictured above). It is on Saturday, July 12, and tickets will be available from Mike & Jan (01379 678835) & other committee members. Details will be finalised at the next committee meeting in June. Katie & Drew Abbott will be running the bar. Hope to see you there

Mike Ager



Your District Councillor reports . . .

IF YOU have been waiting for a brown bin for garden waste the news is that the scheme is a victim of its own success.

The council have run out of the bins and there are 300 people on the waiting list but a shipment is due soon and everyone who has applied will get one. The financial break-even point has already been passed. And all this garden waste, which would have been going to landfill, can now go to composting.

Kitchen waste is progressing well. If we can move more waste away from landfill we can reach the Government target of recycling 60 per cent of all waste and give you a better environmentally friendly service. Mid Suffolk is top in the country for recycling. We aim to stay at the top.

The new process for making planning applications, 1APP, has been in use since the beginning of April. The implementation, added to the increase in fees, caused a large surge in applications prior to April 6. The registration of the backlog has been

worked through and the new 1APP applications are now being registered. An update on planning was presented at the Parish Liaison meeting which was well received and we are working more closely with SALC (Suffolk Association of Local Councils) to enable training for parish council members.

The first Locality meeting for Hartismere Hospital was held at the beginning of May. A press release was issued following the meeting and there will be subsequent ones after each meeting, which will be held at roughly six-week intervals. The development of the site is about to go to tender with the approved partner being announced later in the year.

The Primary Care Trust do realise how exposed we are in this area for clinical assistance. The Locality Committee comprises representatives of local GPs, hospitals, patients groups, local representatives the Friends of Hartismere, medical ancillaries and district and county councillors.

Elizabeth Gibson Harries
01379 384680

NEWS IN BRIEF

INTER VILLAGE GAMES 2008: The games are at Weybread on Sunday, July 13, and if you, or a member of your family, are strong athletic or agile and enjoy taking part in races let Horham team manager Tracey know on 01379 388837. During the week before, July 7-12, she will need archery, pool, rounders, darts and hockey players.

RECYCLING MORE: Suffolk County Council's Household Waste Recycling Centre in Brome will now take your used cooking oil – it is recycled and used to produce electricity. Drink and milk cartons, including Tetra Paks – which shouldn't go in your recycling bins, are also collected at Brome.

TURTLE DOVES: Suffolk Wildlife Trust wants to know if you see any turtle doves this summer. A county-wide survey aims to find how many of this summer visitor come to Suffolk. Contact Suffolk Wildline on 01473 890089, info@suffolkwildlifetrust.org or www.suffolkwildlifetrust.org

OCCOLD FUN DAY: Occold are pushing out the boat on Saturday, July 5, with a whole host of events. As well as a traditional fete there will be a procession with vintage tractors, vintage cars and morris dancers. During the fete there will be a folk group, carts 'n' carriages races, a fancy dress competition, five-a-side football and a balloon race. In the evening there will be live music, tug 'o' war, a gladiator challenge and a bucking bronco (see what's on).

It's time to rally round again

Originally started in 2002, as a one-off event to celebrate the Queen's Jubilee, the Horham Bygones Country Rally has now become a fixture in the East Anglian rally calendar and an annual feature in Horham.

Not only does it generate funds for the Horham and Athelington Community Council, it also offers charities, including the Royal British Legion and East Anglian Children's Hospice (EACH), the opportunity to attend, free of charge, in order to promote their organisations and raise money.

The rally, on Saturday, June 14, at the community centre, includes displays of bygone tractors, classic cars, commercial vehicles, military vehicles, stationary engines, cycles, auto-cycles, motorcycles and scale models.

There are also trade stands and a car boot sale. The displays of tractor ploughing, on a dedicated 'working' field, with Robbie, the shire horse providing his own one-horse-power show, are always popular. This year the funfair is being replaced by rides for smaller children.

The Fire Service Preservation Group provides displays of fire fighting and rescue techniques during the day. At last year's rally, when the chimney of the fish and chip catering unit caught fire, they put out the blaze before the Stradbroke fire tender arrived but they can't promise to provide similar excitement this year!



Catering outlets offering hog roast, rolls and sandwiches, burgers, hotdogs,

jacket potatoes, fish and chips and, of course, ice-cream, sweets and candy floss are available. There is also a licensed bar in the community centre.

The entrance for the rally is £4 for adults, £2 for concessions, £10 for a family ticket and accompanied under fives are free. Free car parking is provided in an adjacent field and there is limited disabled car parking on site.

On Sunday there is a tractor and auto-cycle road run organised on behalf of EACH. It starts at 10am from the community centre. Sponsorship and donations for EACH are always welcome.

Full details of the rally, including details and photographs of the 2007 rally (some of which are featured here), can be found on the website www.horhambygones.co.uk For information contact Don Moyes on 01379 388129 (evenings) or 07894 903929 (daytime).



31st AGM held on April 9 at Horham & Athelington Community Centre

GENERAL: The turnout was 20 plus with Community Police Officer PC Tim Green reporting on crime, District Councillor Elizabeth Gibson-Harries talking about plans for Hartismere Hospital, County Councillor Guy McGregor speaking about plans for a single council (see their columns) and Rev David Streeter pointing out that the church needs a lot of repairs. So it turned into a marathon meeting. Mike Ager was re-elected for his final year as chair, Jeanette Brierley as treasurer and Pat Kelly as minutes secretary. Sue & Stephen Toll were elected on to the committee. A £500 donation was agreed for St Andrews church for 2008-2009.

DOORSTEP GREEN: Janet Norman-Philips said plans are being drawn up by three firms for a slide, which could cost approximately £7,000 with its safety surface. The company that installed the swings has refunded/donated £730 to the scheme. The idea to extend the Doorstep Green and add a woodland area was floated.

PLANNING: This proved a hot issue in the wake of the refusal of permission for two small semi-detached houses on the Old School site despite the parish's approval. Kathy Thurman the agent for the Old School application recommended an appeal. Councillor Gibson-Harries said drawing up a Village Plan could help us get more affordable housing. The new Mid Suffolk Local Development Framework will designate Redlingfield as countryside and remove the present development boundaries.

TREASURER'S REPORT: 2007 events: the village BBQ raised £718.16 with 116 tickets sold; the Cheese & Wine raised £655.32 with 115 tickets sold; the Harvest Supper raised £492.83 with 71 tickets sold.

POSTERS: Mike reminded people that posters with news of events and useful info etc are regularly put on the Village Green and Doorstep Green noticeboards.

REDLINGFIELD PARISH COUNCIL/REDLINGFIELD VILLAGE MEETING: chairman, Mike Ager, Hidcote Lodge, Mill Road, Redlingfield, IP23 7QU. Tel: 01379 678835. Email: mjager99.fsnet.co.uk Members: minutes secretary - Pat Kelly; treasurer - Jeanette Brierley; committee members - Andrew Abbott, Graham Abbott, Hazel Abbott, Katie Abbott, Allan Chapman, Susan Chapman, Edith Coe, Chris Gibbons, Andrew Howlett, Russell Kerry, Mandy Miller, Janet Norman-Philips, Stephen Toll & Sue Toll.

JUNGLE CUBS & JUNGLE GIANTS: Whitney McMaster from Redlingfield and Louise Austin, originally from Occold but now from Diss, have launched a nursery, out-of-school & holiday club in the newly-refurbished gym at Kerrison in Thorndon. The Jungle Cubs & Jungle Giants caters for two to 11-year olds. Term time opening hours are 7.30am-6pm on Monday, Wednesday and Thursday and 7.30am-5pm on Friday. During school holidays, opening times are 7.30am-6pm Monday to Friday. Since launching in April they have added a Parent & Toddler Group every Friday, 9.30-11.30am (except Bank Holidays and school holidays) – there's no need to book just drop in. It is £1 to enter (50p for extra siblings) – they provide teas and coffees and a snack for the children. For information call 07834 483893.

HORHAM HIGHLIGHTS: As I type this, with spring finally sprung (or is it summer? It is hard to tell), there is much activity in the village.

It was splendid to see those grand old ladies of the sky flying over the village last weekend coinciding with the open day of the 95th Bomb Group Hospital museum. To hear the Merlin engines powering those magnificent machines through the air was music to my ears but I wonder what thoughts passed in people's minds sixty-plus-years ago when they heard similar sounds reverberating over the village? The weather was kind to us for St Mary's open tower day on the same day.

There always seems to be something going on in the village and posters are appearing now reminding us of another forthcoming Horham event – the Bygones Rally on Saturday, June 14, followed by the Road Run on Sunday, June 15.

The community centre is open Wednesday, Friday and Saturday evenings for liquid refreshment and a chat but more importantly it is the scene of community events bringing people together, not just for fund raising but socialising: something that those living in an urban environment do not always enjoy.

During the winter some Fridays were Kipper Nights when people could enjoy a chat, a drink and a freshly-cooked kipper. This was appreciated by many who enjoyed the taste without having to face the lingering smell in their kitchen the next morning! With the support of Rod our licensee and David and Irene at the Post Office, the resident cook now offers fish and chips on advertised Friday evenings in the summer months. Our trial run on Friday, May 9, was a great success and the next one is arranged for the 24th. Ordering your fish meal can easily be done at either the Post Office or the community centre bar up to a week beforehand. Although the next event will take place before this reaches you there will be further Fish & Chip Nights throughout the summer.

I was shocked to hear that Reverend Streeter (David) was rushed into hospital on Monday, May 12, with a suspected heart condition. I understand from the Reverend's wife (Margaret) that he was still carrying out some of his duties from his hospital bed! I am sure with me you would all like to wish him a speedy recovery and, dare I suggest it, perhaps some rest.

Angela Wilkins Clerk to the Parish Council 01379 384625

SUFFOLK OPEN STUDIOS: The annual open studios event held over weekends in June gives you a chance to see how local artists work. The Artists' Directory, which is free from shops, libraries, art galleries, Mid Suffolk Tourist Information Centre, Stowmarket (01449 676800) and www.suffolkopenstudios.co.uk lists the artists opening their studios. There will be 130 studios to visit across the county. The nearest to us are: oil painter Cynthia May in Eye; Royal Academy-trained landscape painter Rosemary Elliott in Wingfield; printmaker Lyn Berwick in Stradbroke; pencil artist Dave Sumner in Stradbroke; fine art landscape photographer Charles Lane in Wilby; wildlife painter Robert Shepperson (who's work is pictured) in Worlingworth; and figurative painter Elaine Nason in Laxfield.



Tuesdays

Belly Dancing: Horham Community Centre, 7.45pm-9pm. Enquiries Pip Florance (01379 384370) or Margaret Streeter (01379 384363).

Bingo: Thorndon Village Hall, 7.30pm every other Tuesday. Next sessions June 10 & 24, July 8 & 22. Enquiries Brenda (01379 678178), Marion (01379 678575) or Hazel (01379 678949).

Wednesdays

Hoxon Hundred Pub Dance Outs: 8pm to nightfall. June 4, Crown, Gissing; June 11, Cross Keys, Redgrave; June 8, Six Bells, Walsham le Willows; June 25, Black Swan, Homersfield; July 2, Cherry Tree, Yaxley; July 9, White Horse, Theltham; July 16, Duke William, Metfield.

Sundays

Open Days at the Red Feather Club

Museum: June 1 & 29, July 6 & 27, August 3 & 31, September 7 & 28, October 5 & 26. Horham Airfield, 10am-4pm admission free.

Sunday, June 1-Monday, June 30

Suffolk Open Studios 2008: (page 19).

Saturday & Sunday, June 7 & 8

Eye Open Gardens: Approx 20 gardens & allotments open in aid of Eye church. 1.30pm-6pm. Entry £4, accompanied children free.

Saturday, June 14

Annual Bygones Rally with Car Boot: Horham & Athelington Community Centre & Meadow. For car boot sale 01379 384363 (pages 16 & 17).

Sunday, June 15

Annual Bygones Rally Road Run: from Horham & Athelington Community Centre. 10am.

Debenham Street Fayre: 1pm-6pm Debenham High Street/Aspall Road. Refreshments, rides, bands, stalls, entertainers etc.

Tuesday, June 17

Rural Coffee Caravan Information

Project: Redlingfield. 10am-noon.

Friday, June 20

Friends of Occold School present a **Robbie Williams Tribute Evening:** Debenham Leisure Centre. Tickets £10. Jayne Tarrant, 01379 678460.

Saturday & Sunday, June 21 & 22

Suffolk Game & Country Fair:

Little Glemham Hall, nr Woodbridge.

Sunday, June 22

Worlingworth Open Gardens: Stalls, cream teas, grand draw & ploughman's lunches at the church. Adults £2.50, children free. Tickets on sale at gardens & the church. Songs of Praise in St. Mary's at 6.30pm. In aid of church.

Saturday-Monday, June 28-30

Flower Festival: St Peter's Church Athelington (page 5).

Wednesday, July 2

Redlingfield Churchyard Clear Up: Help tidy up at St Andrews from 6pm.

Saturday, July 5

Occold Fun Day: Fun in the Field from 3.45pm. Fete, 4pm-7pm. Evening fun, 7pm-11pm (page 16).

Fressingfield Fete: Fete, 2pm-5pm. Music, 7pm-10.30pm.

Sunday, July 6

Heveningham Hall Country Fair

Wednesday, July 9

Redlingfield Doorstep Green Tidy: Help get ready for summer & the village BBQ.

Saturday, July 12

Redlingfield BBQ: Redlingfield Doorstep Green. Tickets Mike & Jan (01379 678835) & other committee members.

Tom Plunkett & His Superswing Big Band: Sibton Park. 6.30-10pm. Tickets £8 in advance, £10 on day. 01728 660369.

Caribbean Evening: Thorndon Village Hall. Richard Lummis, 01379 678209.

Sunday, July 13

Inter Village Games 2008: (page 16).

Saturday, July 19

Stradbroke Country Fair: 2pm, Street Farm, Laxfield Road, home of Peter & Maria Smith. Ferret racing, gun dogs, morris dancers, BBQ, refreshments, licensed bar, sideshows & stalls. Enquiries Maria Smith (01379 384311) or Margaret Streeter (01379 384363).

Sunday, August 3

Stepdance Day: The Swan, Worlingworth.

Tuesday, August 19

Rural Coffee Caravan Information Project: Redlingfield. 10am-noon.

Saturday, August 23

Occold Promz 2008: Occold Playing Field. Albert Hall meets Glastonbury with a six-course meal. Tickets £18.

Sunday, August 31

Charity Ride Out: Beaconsfield Arms, Occold -Triangle Motorcycle Club.

Tuesday, September 3

Rural Coffee Caravan Information Project: Redlingfield. Afternoon.

Saturday, September 6

Fun day: Athelington Hall. Stradbroke, Horham, Redlingfield and Athelington's end of summer bonanza (page 1).

Saturday, September 13

Suffolk Historic Churches Trust Annual Sponsored Cycle Ride: 10am-6pm. Sponsorship forms from: Daphne Harvey, Horham, 01379 384216; Evelyn Adey, Athelington, 01728 628428; Joan Abbott, Redlingfield, 01379 678736.

Fall Play - Autumn Festival of new short plays: Fressingfield Archbishop Sancroft Hall, Fressingfield. 2.30pm & 7.30pm. Adults £5, concessions £4. Bookings 01986 781721 or patrickquorn@btinternet.com

Saturday, September 20

Laxfield Festival of Tolerance: 11 hours of family entertainment including games, street performers, open-air theatre, food & drink. Laxfield High Street. 2pm-1am.

New Reeding Woods Group Autumn Open Day

Wednesday-Saturday, September 24-27
4th Fressingfield Music Festival:

Concerts start 7.30pm. Tickets available from mid August at Fressingfield Stores & 01379 586269 & 01379 586537. Details www.onesuffolk.co.uk/FressingfieldPC/

Friday-Sunday, September 26-28

The "Queen" Presents ... : Marquee at the Queen's Head, Stradbroke. Comedy, rock 'n' roll, folk music and a barn dance. Tickets from the Queens Head, 01379 384384. Friday £12; Saturday £18; Sunday £12; weekend ticket £35.

Saturday, September 27

Folk Evening: Thorndon Village Hall. Richard Lummis, 01379 678209.

Saturday, October 4

Denham Harvest Supper: Denham Village Hall, 7pm for 7.30pm, sherry on arrival, three-course meal & coffee. Entertainer Rick Hallam. BYO drinks (soft drinks available). Raffle. Tickets £6 from Pam (01379 871590) or Rose (01379 870346). Book early to avoid disappointment.

Saturday October 11

Ruby & Her Horses: Occold Village Hall. A true life narrative in song & story set against the hardships of the agricultural depression of the 1920s & 1930s. Tickets Diane Stephenson, 01379 678647.

Saturday, October 18

Redlingfield Harvest Supper: Horham & Athelington Community Centre.

Occold Harvest Supper: WI fundraising event, Occold Village Hall.

Scheduled bus services (Horham):

Mondays to Saturdays: Goldline Coaches' 482 Framlingham-Laxfield-Stradbroke-Diss service, which is sponsored by Suffolk County Council, calls at Horham. The service from Framlingham stops opposite the church at 07.54am, 1.54pm, 5.54pm calling at Denham, Hoxne and Diss and at 9.54am calling at Denham, Hoxne and Eye. Buses from Diss stop at Horham Church 2.47pm, 4.47pm and 6.47pm on their way to Framlingham. The service from Eye reaches Horham at 12.47pm.

Fridays: Farelina Bus & Coach's 475 Wingfield-Stradbroke-Hoxne-Diss service leaves Horham from opposite the church at 9.52am arriving at Diss Bus Station at 10.32am. The return bus leaves Diss Bus Station at 1pm arriving at Horham at 1.35pm. For detailed timetables visit www.travelineeastanglia.co.uk/index.html

High Suffolk Community Transport (Redlingfield): There are once-a-week return minibus services from Redlingfield to Diss and Stowmarket.

Diss: On Fridays the Worlingworth-Bedfield-Redlingfield-Eye-Diss service picks up from The Knoll at 9.42am arriving at Diss Bus Station at 10.07am. It returns from Diss Bus Station at 12.20pm arriving at Redlingfield at 12.45pm.

Stowmarket: Thursdays' Redlingfield-Worlingworth-Debenham-Stowmarket service leaves from The Knoll at 8.55am arriving at Stowmarket Market Place, Argos Store, at 10am. It leaves Stowmarket at 1.10pm arriving in Redlingfield at 2.15pm. For more information visit www.travelineeastanglia.co.uk/community.html

Dial-a-ride minibus (Athelington, Horham & Redlingfield): The Borderhoppa, which has a capacity of one to 16 people and offers disabled access, serves a large area approximately centred on Diss. The service is available Monday to Friday from 8.30am to 5pm and bookings are taken Monday to Friday from 8.30am to 3.30pm 48 hours in advance. You are advised of fares at the time of booking. Telephone: 01379 854800.
Email: borderhoppa@redmoon.me.uk

SuffolkCarShare.com: This scheme was launched last year by Suffolk A.C.R.E. (Action with Communities in Rural England) in partnership with the county council and chamber of commerce. It gives people the chance to offer or seek lifts on www.SuffolkCarShare.com

New Reeding Woods Group, Pound Lane Wood, Redlingfield Road, Horham: join a working party, or become a "Friend" by calling Mike Reeves on 01379 668179. This is community woodland, held in trust for all the villagers of Denham, Horham and Athelington.

Redlingfield & Occold Women's Institute: Meetings in Occold Primary School on the first Wednesday of every month except January when they are on the second Wednesday. Contact Chris Hewitson, 01379 678020.

BIRDLIFE: Robins in my garden seem to think that they are tits, or possibly they just envy the tits' acrobatic skills. At any rate they keep trying to eat from the suet cake which hangs in a swinging cage. They are not tits and are quite the wrong shape for emulating them, they are round bodied and long legged and the dynamics are all wrong for feeding from a swinging suet cake. In consequence they keep falling off which looks quite funny but their persistence is certainly impressive. There must be some lessons in all this.

Evelyn Adey

Horham & Athelington Community Council (opposite the church):

Membership is £10 for a family living at one address, (2 adults and children up to 16 years), £5 for a single adult, £3 for a junior 16/18 years (age must be proven). Membership fees run from January 1-December 31. Membership forms are available from the bar staff, or from Angela Wilkins on 01379 384625. Community Centre club nights and opening hours: Wednesday, Friday, and Saturday, 8pm-11pm (admission may be restricted when a private function is being held). Further information on membership or Community Council events is available from Angela Wilkins on 01379 384625. Hall bookings can only be made via Karen Alderton on 01379 384754. Chairman - Margaret Streeter, The Rectory, Doctors Lane, Stradbroke, 01379 384363. Personal Licence Holder - Rod Tyrrell, 01379 388285.

Horham Old School And Social Club (next to the church):

Membership is £5 per year, and the Club is open from 8pm till late on Tuesdays and Fridays. Chairman - Keith Hawes, Meadow Farm, Athelington, Eye, IP21 5EJ. Tel: 01728 628608. Secretary - Margaret Streeter, The Rectory, Doctors Lane, Stradbroke, IP21 5HU. Hall Bookings - Pip Florance, Tel: 01379 384370, Laburnum Cottage, The Street, Horham, IP21 5DX. Personal License Holder - Keith Hawes.

95th Bomb Group Heritage Association/Red Feather Club, Horham:

Web: www.95thbg-horham.com Annual membership £5. Contact Frank Sherman on 01379 678471 or frank.sherman@btinternet.com

Royal British Legion: Stradbroke and District RBL Branch meet at The Kings Head, Laxfield (Low House), at 11.30am on the first thursday of each month for a meeting with speaker and lunch afterwards. Contact Jeremy Higgins, Hon Secretary, 01379 384300.

Eye Royal British Legion Women's Section: The group meets at the Tacon Close Community Room in Eye for social events, with guest speakers and to raise funds. Meetings are on the third Monday in February, April, June, August, October and December at 7.15pm. All women welcome. For details contact The Secretary, Mrs C Elliott on 01379 644981.

Royal Air Forces Association: Diss and District RAFA branch (covers this area).

Meetings usually first Monday of the month at the Grasmere Club in Diss. Details from: Brian Ager, secretary, 01379 640337 or Gordon Johnson, membership secretary, 01379 642101. Email dissrafa@mail.com

Suffolk Family History Society - Stradbroke & Eye Group: If you are thinking about researching your family history the society may be for you. The local group meets at the Community Centre, Wilby Road, Stradbroke on the last Tuesday of the month. You don't need to be a member to go to meetings, which start at 7.30pm with entry fee of £2. To learn more about the society visit www.suffolkfhs.co.uk or write to the Membership Secretary, SFHS, 60 Oldfield Road, Ipswich, IP8 3SE. You can contact the branch on 01728 860551 or at secretarystradbroke.sfhg@ntlworld.com

Hoxon Hundred: Morris dancers and musicians practice on Wednesdays through Autumn and Winter at St Edmund's Hall, Hoxne at 7.30pm. For information contact their bagman Ron Ross on 01379 643563. Web: www.hoxonhundred.co.uk email hoxon@btinternet.com (see what's on and story for summer events).

useful information & contacts

Suffolk Animal Rescue: 5 Cherry Tree Lane, Debenham, Suffolk, IP14 6QT. Has rescued cats, dogs, rabbits and other small animals seeking new homes. Tel: 01728 860937. Email suffolkar@hotmail.com Web: www.onesuffolk.co.uk/suffolkanimalrescue

The Eye & District Members Group of the Suffolk Wildlife Trust: Works to raise funds and promote awareness of the Suffolk Wildlife Trust in Eye and surrounds. Regular monthly evening meetings are at Mellis Village Hall. For details contact Tim Craven on 01379 668383 or visit the trust's website at www.suffolkwildlife.co.uk/

Suffolk County Council's **Household Waste Recycling Centre** at Brome: Opening times - 1 November to 31 January, 8am to 4pm; 1 February to 31 March, 8am to 5pm; 1 April to 30 September, 8am to 6pm; 1 October to 31 October, 8am to 5pm.

Mobile Library (Horham & Redlingfield): The Mobile Library visits Redlingfield and Horham on alternate Thursdays (June 12, 26; July 10, 24; August 7, 21; September 4, 18; October 2, 26, 30). It stops at The Knoll, Redlingfield, from 11.40am to 11.50am and Horham Church from 12.00pm to 12.10pm. If you need to contact the mobile library, the phone number is 07736 007604. Alternatively, you can telephone the mobile library office between 9am and 12 noon, Monday-Friday, on 07872 676698 or email help@suffolklibraries.co.uk

Citizens Advice Bureaux: Web: www.citizensadvice.org.uk/ Get advice online from www.adviceguide.org.uk for up-to-date CAB information.

Diss, Thetford & District Citizens Advice Bureau:

Diss - Shelfanger Road, Diss, Norfolk, IP22 4EH but at The Denny Centre, Thomas Manning Road, 10am-2pm, Mondays & Thursdays during rebuilding work. Tel: 01379 651333 (Diss); 01842 764860 - welfare rights and money advice Thetford. Fax: 01379 640530 & 01842 750986. Email: advice@disscab.cabnet.org.uk

Harleston - Information Centre, 8 Exchange Street, 10am-1pm Wednesdays & 10am-noon Fridays.

Eye - Customer Services Direct, Cross Street, 10am-noon Thursdays.

Mid-Suffolk Citizens Advice Bureau:

Stowmarket - 5 Milton Road South, Stowmarket, Suffolk, IP14 1EZ - 9.30am-3.30pm Mondays & Tuesdays, 9.30am-6.30pm; Thursdays & 9.30am-12.30pm. Tel: 01449 676060 & 01449 676280. Fax: 01449 675634 - ring before faxing.

Information Centres:

Eye Service Centre: 6 Cross Street, Eye, IP23 7AB, open Monday-Friday, 9am-5pm. A partnership between Suffolk County Council and Mid Suffolk District Council.

Harleston Community Information Centre: 8 Exchange Street, Harleston, open Monday-Friday, 9.30am-3.30pm; Saturday, 10am-1pm. Offers information covering this area.

Farmers' Markets:

Stowmarket, Market Place, first Friday of the month, 9.30am-1pm. **Rickinghall Village Hall**, second Saturday of the month, 9am-1pm. **Stradbroke Business & Enterprise College**, first Saturday of the month, term time only, 9am-1pm. **Diss**, marketplace, second Saturday of the month, 9am-1pm.

Eye Church Fairtrade Shop: Open Monday, Wednesday and Friday every week, 11am-1pm, Eye Church.

Denham Village Hall: Charges for hiring the hall range from £35 for all-day hires by non-residents to £7 for residents' children's parties. Electricity, which includes most of the heating, is extra, paid by a 50p and £1 slot meter in the kitchen. Bookings can be made from Tina Chenery (01379 870797). Hall management committee chairman: Mr D. Reynolds (668797); secretary: Rose McMahon (870346).

St John The Baptist; Denham

Sunday, June 22, family service at 3pm - Rev David Streeter.

Sunday, July 27, family service at 3pm - to be arranged.

Occold Baptist Church, The Street, Occold.

Church Secretary: Paul Harvey (01379 678764) Email: paul_harvey@btinternet.com

Deacon: Phillip Leeder (01379 678962). Friends & Neighbours: Pauline Harvey (01379 678764).

Sundays: Services are at 10.45am and 6pm. The evening service is followed by refreshments and chat. Every first Sunday after the evening service at 7pm there is supper and you are very welcome to join with us.

Thursdays: Bible study with opportunity for discussion. The meeting is also an important time to pray for the village and surrounding area, national and international events, for the sick and those in need, and for one another at 7.30pm. On the last Thursday of each month Occold Baptists join with Diss Baptist Church, Denmark Hill, Diss, at 7.30pm. Second Thursday at Rishangles Baptist Church at 7.30pm.

Friends & Neighbours: For ladies, second Wednesday of each month at 7.30pm. A guest is invited to demonstrate a craft or speak about their work or travels.

Horham Baptist Church, Chapel Lane.

Secretary, John Ladbrook, Potash Farm, Fingal Street, Worlingworth, IP13 7PD. Tel: 01728 628670. Web: www.horhambaptistchurch.org

Wheelchair access & space, hearing aid loop.

Main meetings: Sunday: 10.45am - morning worship and sunday school, family service second Sunday in month, Communion quarterly. 2pm - afternoon worship, communion first Sunday in month.

For under 18s: crèche (0-3); Sunday school (3-15); Megamix (5-11); Horhamania (11-16+); Brownies; Holiday Club (3-11); Familytime (all ages); youth house groups.

Local outreach & community activities: Horhamania (11-16+); Brownies; Holiday Club (3-11); parents & toddlers; Female Focus; seniors' meals.

Most Holy Trinity Catholic Church, High Road, Diss.

Parish Priest - Father Simon Blakesley, Waveney House, 7 Fair Green, Diss, IP22 4BQ.

Tel: 01379 642914. Moblie: 07946 390060. Email: HolyTrinityDiss@aol.com.

Web: www.holytrinitydiss.piczo.com

Sunday Mass times: 9.30am (sung); 10.30am at Quidenham (sung); 11.30am; 6pm.

Holydays: 8am at Quidenham; 10am; 8pm.

Weekday Masses: Monday 10am; Tuesday 8am; Wednesday 10am; Friday 10am; Saturday 10am. Morning Prayer is said 20 minutes before Mass on weekdays.

Saturday mornings: The Rosary is prayed at 9.40am. Confessions are heard on Saturdays between 10.30am and 10.45am or at call.

Church of England

All Saints, Stradbroke, Church St; **St Andrew, Redlingfield**, Church Road; **St Peter, Athelington**; **St Mary, Horham**, The Street. Rev David Streeter, The Rectory, Doctors Lane, Stradbroke, IP21 5HU, Tel: 01379 384869. Email: davidstreeter@suffolkonline.net.

Services (Holy Communion unless stated otherwise):

- June** 1, Horham, 9am. Stradbroke, Family Communion, 10am.
8, Stradbroke, Benefice Communion, 11.15 am.
15, Stradbroke, 8am. Horham, 9am. Athelington, 10am.
22, Stradbroke, 8am. Horham, 9am. Redlingfield, 10am. Horham,
Morning Prayer 11.15 am.
29, Stradbroke, 8am. Redlingfield, Morning Prayer, 10am.
Athelington Festival Evensong, 6.30pm.
- July** 6, Stradbroke, 8am. Horham, 9am. Athelington, 10am.
13, Benefice Communion, Redlingfield, 10am.
20, Stradbroke, 8am. Athelington, 10am.
27, Stradbroke, 8am. Redlingfield, Morning Prayer, 10am. Horham,
Morning Prayer, 11.15am
- Aug** 3, Stradbroke, 8am. Horham, 9am. Athelington, 10am.
10, Benefice Communion, Horham, 11.15am.
17, Stradbroke, 8am. Horham, 9am. Redlingfield, 10am.
24, Stradbroke, 9am, Redlingfield Morning Prayer, 10am. Horham,
Morning Prayer, 11.15 am.
31, Stradbroke, 8am. Horham, 9am.

planning

To be decided: Meadow Land to south of farm drive Athelington Hall, Horham Road, Athelington: Proposal to use land for six holiday lodges with ancillary construction of approach drive, hard standing and drainage plant. **Rose Cottage, The Street, Horham:** Proposal to erect front porch. **Little Meadow Farm, Stradbroke Road, Horham:** Proposal to erect goat rearing and dairying building.

Granted:

Land adjacent Firethorn, The Street, Horham: Proposal to erect two detached dwellings.

Building Plot at Weyanoke, Redlingfield: Proposal to erect single storey dwelling with detached single garage.

(Information from Mid Suffolk Council's website)

You can receive your Athelington, Horham & Redlingfield News electronically if you prefer. Simply email mike@mjager99.fsnet.co.uk with your name and address (so you don't get a paper version as well) and when the next issue is published we'll email it to you as a pdf.

We aim to produce four seasonal issues a year, coming out at the end of February, May, August and November. Contributions or information needs to be with us by the 14th of that month at the latest to be included in that issue.

Advertising rates for four issues distributed to approximately 300 homes in Horham, Athelington, Redlingfield and surrounds are:-

1/8 page £6.25 (42.5mm deep, 60mm across)

1/6 page £8.50 (60mm deep, 60mm across)

1/3 page £16.50 (60mm deep, 125mm across)

1/4 page £12.50 (90mm deep, 60mm across)

1/2 page £25 (90mm deep, 125mm across)

A whole page £50

You can supply artwork and/or logos or we can design adverts for you. Revenue goes towards the costs of producing the magazine and any profits will be split between Horham & Athelington Parish Council and Redlingfield Village Meeting.

**For more information contact: Evelyn Adey on
evelynadey@e1603.fsnet.co.uk or 01728 628428 at Ivy House
Barn, Southolt Road, Athelington, IP21 5EL.**

We aim to produce four seasonal issues a year, coming out at the end of February, May, August and November. New ads or changes to current ads need to be with us by the 14th of that month at the latest to be included in that issue.

Horham, Athelington & Redlingfield News cannot be held responsible for the quality of goods or services advertised in the magazine. This disclaimer is inserted purely for legal/technical reasons and can in no way be construed as implying criticism of any supplier of goods or services.

Mick Daniels Pest Control

Pests include:

rats, mice, wasps, hornets, moles,
squirrels, ants, cluster flies, fleas.

**FREE SURVEY & QUOTE
CHARGES AT COMPETITIVE PRICES**

Home: 01986 798 851
Mobile: 07788850762



PAUL DURRANT & SON LTD BUILDERS



Church Farm Bungalow, Rishangles, Eye, Suffolk IP23 7JX
Tel/Fax (01379) 678485

All types of work undertaken

**Extensions, Renovations, Alterations, Repairs,
Council Grant Work**

FREE ESTIMATES

EASTERN LANDSCAPES

EST 1995



**LANDSCAPE
DESIGN
CONSTRUCTION
PATIOS & PATHS
FENCING & DECKING
TURFING & SEEDING**

**TREE &
HEDGE CARE**

**FOR MORE INFORMATION CALL
STEPHEN MATTHEWS**

**01379 871252
07771 675262**

FIRST LESSON

Before you even take your first driving lesson and before you even think about driving on the road take your **First Lesson**.



Gain confidence and learn vehicle control in a safe off-road environment ...

Learn clutch control to avoid stalling.

Learn how to master hill starts.

Learn how to negotiate three-point turns.

Learn how to park properly.

To book evening and weekend appointments call

01379 678710 or 07860 568553.

Minimum age for lessons sixteen.

BRICK KILN FARM

FARMHOUSE BED & BREAKFAST

FOR A LUXURIOUS AND
TRANQUIL BREAK

ENJOY WARM HOSPITALITY,
WHOLE SOME FARMHOUSE FARE
AND USE OF THERAPY
TREATMENT ROOM

WE USE OUR OWN ORGANIC FREE
RANGE EGGS AND LOCALLY
GROWN/REARED PRODUCE

Contact for a brochure:
01728 627939

Brick Kiln Farm, Worlingworth Road,
Athelington

Make an appointment at

NATURE'S WAY

for a choice of holistic therapies

Aromatic Swedish Massage

Hot Stone Therapy

Indian Head massage

Sauna

Reiki and Crystal Healing

Holistic Pamper Kits and

Crystal Jewellery

Contact Linda on
01728 627939 (Athelington)

YOUR RELIABLE LOCAL PLUMBER



Anglian Water Approved

Mark Jardine Plumbing & Heating



Oftec Oil Registered

- All Domestic Plumbing
- Full Bathroom Installation
- Domestic Heating, Radiators, Pumps etc.
- All Work Fully Insured & Guaranteed
- 24 Hour Emergency Call Out

Tel: 01379 672 904 Mob: 07854 924 801

New Haven, Tudor Court, Occold, Eye, Suffolk IP23 7PZ

The CMC Complementary Medicine Centre

The Complementary Medicine Centre
provides a full range of therapies.

***Free 15 minute
introductory consultations are available
with all therapists.***

The Gilchrist Unit, Hartismere Hospital, Castleton Way, Eye,
Suffolk IP23 7BH Tel. 01379 870707

www.compmed.co.uk e-mail: info@compmed.co.uk

01728 628233

AH
Athelington Hall



Corporate



Log Cabin Holidays



Weddings

We also specialise in Hog Roasts for up to 180 people on site or they can be delivered
Smaller function room available with kitchen for the smaller function

Athelington Hall Horham Eye Suffolk IP21 5EJ
www.athelingtonhall.co.uk peter@athelingtonhall.co.uk

Cowhams
Car
&
Commercial

Servicing & Repairs
for all makes
New & Old



VOSA MOT Testing Station
petrol, diesel class 4 & 7.

CAR & VAN SALES

vehicles sourced if we don't have them in stock

Insurance Repairs, 24hr Recovery, Car Valeting.

Brakes, Exhausts, Clutches, Tyres & Batteries.

Air Conditioning
Service & Repair
Accident & Body
Repair Centre.

The Garage Fressingfield
Tel: 01379 388 999
www.cowhams.co.uk

LANDMARK Tree Surgery

Experienced and Qualified
Public Liability Insurance

01379 586 505



R COLE PLUMBING SERVICES

BEDINGFIELD

TEL: 01728 627108

MOB: 07961 271644

General plumbing

Free local estimates



Find out how one of the Cambridge Health & Weight Plan programmes, with its unique one-to-one support service, could help you reach your ideal weight and maintain it! Contact me, your local counsellor, in complete confidence today.

Dawn Harrold

01379 783032

07766 407213

Computer Services

In your own home

- Friendly Local Service
- Callouts anytime, 7 days a week
- New computers
- Home/business services
- Computer setup & repair
- Software supply & setup
- Broadband repair & tuning
- Website Design & Hosting
- Free friendly advice over the 'phone

Tristan Scott (BSc Hons)

M: 07837 205829

W: www.yvts.co.uk

E: sales@yvts.co.uk

(based in Redlingfield)

Yare Valley
Technical Services

L&M TAXIS

01379 669370

Your LOCAL Taxi Service

4 & 6 seat vehicles

Any length of journey

Best value for airports

01379 669370

07795 264233

Useful Contacts

Parish Councils:

Redlingfield Parish Meeting	01379 678835
Horham & Athelington Parish Council	01379 384625

Mid Suffolk District Council:

Tel: 01449 724500
Web: www.midsuffolk.gov.uk
Email: webinfo@midsuffolk.gov.uk

(0845 606 6067 & customerservice@csduk.com for some services)

Suffolk County Council:

Tel: 0845 606 6067
Web: www.suffolk.gov.uk
Email: customerservice@csduk.com

District Councillor: Elizabeth Gibson-Harries

Tel: 01379 384680
Email: elizabeth.gibson-harries@midsuffolk.gov.uk

County Councillor: Guy McGregor

Tel: 01379 668434
Email: guy.mcgregor@councillors.suffolkcc.gov.uk

Member of Parliament: Sir Michael Lord MP

Tel: 01728 685148
Web: www.centralsuffolk.co.uk
Email: mail@centralsuffolk.co.uk
House of Commons, London, SW1A 0AA

Police: Our Community Police Officer is PC Tim Green.

Tel: 01284 774100 (ask for him by name).
He can also sometimes be found accompanying the library van.
Eye Police Station: Tel: 01284 774640
Non emergency calls: Tel: 01473 613500

In an emergency dial **999**. You should dial 999 when life is threatened or people are injured, or if there is a crime in progress or an immediate police response is necessary.
It is better to be safe than sorry.

Reporting a problem: You can report problems relating to: abandoned vehicles; damage to a street signs, litter bins; dogs; drainage; fly tipping; litter; noise; odour; rat or mice infestations; refuse collection; and smoke, fumes or dust; online using the onesuffolk website (www.onesuffolk.co.uk/reportaproblem). This is a partnership involving the police and councils.

Neighbourhood Watch:

Redlingfield: Chris Gibbons	01379 678169
Horham: Hav Wilkins	01379 384625

**Our next issue is due out at the end of August.
The final deadline for all submissions is August 14.**
