

# ***Athelington, Horham & Redlingfield* NEWS**



***AUTUMN 2013  
ISSUE No. 23***



# The CMC Complementary Medicine Centre

The Complementary Medicine Centre  
provides a full range of therapies.

***Free 15 minute  
introductory consultations are available  
with all therapists.***

The Gilchrist Unit, Hartismere Hospital, Castleton Way, Eye,  
Suffolk IP23 7BH Tel. 01379 870707

[www.compmed.co.uk](http://www.compmed.co.uk) e-mail: [info@compmed.co.uk](mailto:info@compmed.co.uk)

## FENCING

***Post & Rail - Stock - Rabbit - Electric Fencing  
Horse Netting - High Tensile***

**Entrance - Field Gates Installed**

***Domestic Fencing***

**Tree Work - Hedge Cutting & Reducing**

***Clearing Prior To Fence Erection***

**Mechanical Post Knocking Service Available!**

***Top Quality Work - Can Supply Material  
Or Happy To Use Your Own***

**For A Competitive, Friendly And Tidy Service  
Please Contact - Andrew Muttock The Postman  
Fencing Services**

**Home: 01379 678778 Mobile: 07876355579**

**Email: [ajmthepostman@yahoo.com](mailto:ajmthepostman@yahoo.com)**

*FIREWORK NIGHT AT HORHAM and Athelington Community Centre is always a great evening out but this year it will be a little bit special.*

*The event, on Saturday November 2nd, will be in part a tribute to two young men who are no longer with us.*

*Charlie Cockett who died in May and Kevin Alderton who died in February.*

*Charlie spent many of his teenage years in Horham, and kept close ties to the village, despite having lived in Eye for a number of years. His father Tecwyn, who died two years ago, used to arrange the fireworks display in Horham. After he died, Charlie and his brothers took over the reins,*

*ensuring villagers could continue to enjoy the annual event.*

*Don Moyes said: "The event will be partly in tribute to them. they did so much for us. Last year Kevin spent all day working on the bonfire and Charlie stepped in to Tecwyn's shoes so we had terrific firework displays. It's only right the event is a tribute to them."*

*There'll be fireworks galore again this year, bar, hot dogs, chips and a raffle. Gates open 6pm, bonfire 6.30pm, admission is £4 for adults and £2 for concessions. Accompanied young children go free and proceeds will go to Horham and Athelington Community Council.*

**I HOPE YOU ENJOY THIS LATEST EDITION OF YOUR VILLAGE mag. We try to include as much as we can about what's going on in and around our three villages. So if there's something you think we need to include please just get in touch. If we don't know about an event or story we can't write about it. So make sure Evelyn or myself knows about anything you want to share with our villagers.**

*Mike Ager*

*Front page picture: Trevor Edwards' photo of dramatic stormy summer skies.*

If you would like to advertise or contribute to the magazine or have an event or organisation you would like featured contact: Evelyn Adey on [evelynadey@e1603.fsnet.co.uk](mailto:evelynadey@e1603.fsnet.co.uk) or 01728 628428 at Ivy House Barn, Southolt Road, Athelington, IP21 5EL; or Mike Ager on [mike@gn.apc.org](mailto:mike@gn.apc.org) or 01379 678835 at Hidcote Lodge, Mill Road, Redlingfield, IP23 7QU.

**We aim to produce four issues a year, coming out at the end of February, May, August and November. The next issue - Winter 2013-14 - is due to be published at the end of November. The final deadline for all submissions is November 14.** Athelington, Horham & Redlingfield News is printed & published by Evelyn Adey & Mike Ager for the villages of Athelington, Horham, Redlingfield and surrounds. The editors reserve the right to edit or refuse submissions. The views expressed in the magazine are not necessarily those of the editors.

**Athelington, Horham & Redlingfield News cannot be held responsible for the quality of goods or services advertised in the magazine. This disclaimer is inserted purely for legal/technical reasons and can in no way be construed as implying criticism of any supplier of goods or services.**

# A summer full of success

*As harvest gets under way Trevor Edwards has some welcome, and not so welcome, new additions to Wash Farm's wildlife*

**A**S A PRELUDE TO harvest, we spent a warm weekend in July with friends in Lincolnshire, walking in the beautiful unfolding Wolds around the Belchford Black Swan. After a ramble in proper red kite country, it was off to the seaside where a young house martin fledged under our noses. Leaving its beach hut nest on the seafront of aptly-named Sandilands, it flopped onto the promenade and found its wings rapidly, avoiding both a terrier's attempts to eat it and my attempts to help it.

It has been a good summer on the farm for broods of chaffinch, robin and house sparrow.

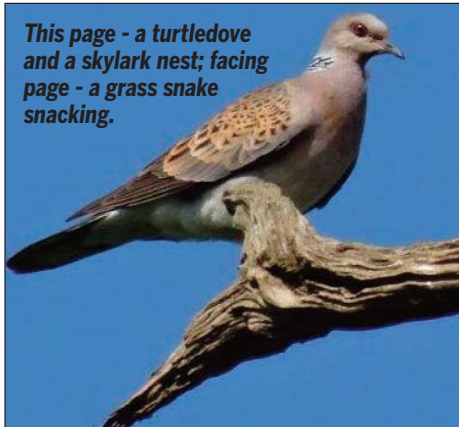
We have had a fine hatch of ten long-tailed tits, successful breeding of turtle dove and a visit of three young

great spotted woodpeckers to the lawn. The GSW parents had pecked away for weeks and weeks on our peanut feeders and so it made sense for them to show the kids where the grub came from. They cleared out of the garden two minutes before a marauding sparrow-hawk swept through, though I can't imagine that three juvenile peckers would be on the menu of even the hungriest sparrow-hawk.

Though not quite so welcome, two young magpies were also raised in a thick hedge behind the workshop. I had deployed a Larsen trap in the spring to reduce the numbers of this skilled corvid and nest robber, so to have one breed in the paddock was hardly in the grand scheme of things.

The magpie is the first trouble maker of the season, it targets the

*This page - a turtledove and a skylark nest; facing page - a grass snake snacking.*





## FEATURES & NEWS

very much”. This chick, hopeful of being fed, instead became the dish of the day. On July 3rd, a newly-hatched brood of blue-tits came to our garden. They were so young they were actually grey tits.

You can see why many small birds like to have good summers so that they can breed twice in

small bird and songbird eggs, and then the crow follows, adept at scouring the borders for the nests of pheasant and partridge.

**SUCH IS HEDGEROW LIFE,** something is always eating something else. Young birds are never in more danger than when sitting exposed in the nest, waiting to be fed and waiting to gain their wings.

I was fascinated to see on Springwatch a grass snake raid a nest of young meadow pipits. It just grabbed one and swallowed it whole. The snake soon came back for another but as they were quite big and near to fledging, the rest had scarpered. The Knowlands of Denham also watched a predatory jay stake out their blue-tit box. They had a first-class view as a youngster stuck its head out for food and the crafty jay said “thank you

order to keep the numbers up. In fact, a woodlark, which is said to have a prettier song than its renowned cousin, can incubate eggs in as few as 11 days and in a perfect world manage four broods.

However, we are not the Brecks and are happy to see plenty of the skylarks on our patch of clay soils here in East Suffolk. A skylark’s nest with four well-camouflaged eggs was found by neighbour Graham Abbott pulling weed-beet out of his sugar beet crop.

This crop is increasingly favoured by the skylark whose success may be helped by the decline in weed control by tractor hoeing.

My favourite story of this excellent year is from Vic and Linda of Southolt, who have had a fantastic four pairs of breeding bullfinches. Their garden is host to all sorts, from pheasants to

*Continued over*



## FEATURES & NEWS

---

*Continued from page 3*

finches, and their conifer tree has so many flights in-and-out they call it Gatwick. Linda also provided this amazing photograph of a grass snake eating a frog and nearly choking itself in the process – or was it a toad?

DESPITE ALL THE DOOM AND gloom for one of our best known migrants, the turtle dove has done well again locally. In Worlingworth, both the Goodge and Colnet families have seen their usual turtle doves return to breed. They are tame enough to frequent the bird tables, and are no doubt encouraged by huge hedges at both locations.

Harvest this year is more of a waiting game than usual. It is August 7th. The football season is underway, Ipswich Town have lost two games already and we haven't even started the rapeseed combining.

Oilseed Rape is a problem crop this year with both slugs and pigeons causing irregular growth and uneven ripening. Mustn't grumble though, otherwise Willie of Worlingworth, (he's the one with the black Labradors who picks up pheasants for the Queen), will come out with his old joke; there are two things you'll never find, a dead donkey or a satisfied farmer.

Even though we have had dramatic stormy skies and heavy downfalls, it has been a hot summer and a brilliant year for butterflies. A brimstone entertained passengers deep on the London Underground last week, obviously having leapt aboard at a station above without buying a ticket. A rich, creamy-white colour, almost buttery, the brimstone is credited with giving butterflies their name.

THESE WARM AUGUST evenings are a treat when the harvesting stops for the day, the wind has died away and you can hear a pin drop. Or you could if it wasn't for the hum of the corn store drier or a neighbours' combine in the distance. Neither drowns out, however, the calls every night of the tawny owls. The story of the barn owls' barren year is well-documented, so to hear the two tawnies from our successful straw stack nest calling to each other is much appreciated.

Some of our other favourites, certainly the swifts, have started the long journey to winter quarters. It is an extraordinary feat and the figures sound like Government deficits. Three billion birds – songbirds, waterbirds and raptors – migrate to Africa for winter having finished their summer breeding in Europe. *Trevor Edwards*

■ **PLANNING: To be decided** – application to continue use of meadow field for holding of 3 camping events each year during summer months, **Athelington Hall, Horham Road, Athelington**; application to use land for siting marquee for holding events during the years 2013 and 2014. The marquee to be sited in-situ for the period May 1st.2013 to October 4th 2013 and similar period in 2014, **Athelington Hall, Horham Road, Athelington. Granted** – application to erect three gates at **Grove Farm, Southolt Road, Athelington.**

# Red Feather Club grows

**T**HE RED FEATHER CLUB is continuing to grow, with construction work started on a new building.

No sooner was the recent reunion over (see centre pages) than work started on a further nissen hut. The 36ft by 24ft hut is being reconstructed on an existing concrete pad and will recreate a building which stood on the site during WW2. It will be used for storage and archives.

THE CLUB, OPERATED AND managed by the 95th Bomb Group Heritage Association, recently hosted a number of visitors.

A group of youngsters from Occold Primary School got into the spirit – dressing as evacuees for their visit and were so inspired that they ran a stall at Occold Fete to raise funds for the club. Sixteen members, plus leaders, from the 1st Fressingfield Scout Troop visited for an evening and earned their Aviation Badges. They will be back, hopefully later this year, for a full day visit. A small group from learning disability charity Mencap also visited the museum in June.

THE CLUB'S SOFTBALL TEAM, the Wallopers, continued their winning ways with a visit to Yoxford. They beat the 357th Yoxford Boy Mustangs in a match which was part of a fund-raising weekend for the Friends of Leiston Airfield. For information on the work



**Youngsters from Occold Primary School get into the blitz spirit at the Red Feather Club.**

of the Friends of Leiston Airfield visit [www.friendsofleistonairfield.co.uk](http://www.friendsofleistonairfield.co.uk).

A MEMORIAL PLAQUE IN honour of 19 air and ground crew of the 95th Bomb Group who lost their lives at Alconbury Airfield was dedicated on Monday May 27th. The event commemorated the day when, 70 years before, USAAF ground personnel were arming B-17 Flying Fortress bombers and, inexplicably, a 500-pound bomb detonated. The explosion set off other bombs and 19 men were killed and 21 injured.

UPCOMING EVENTS AT THE RED Feather Club include: the 200th Mission Dance with club band 'Skyliner' on Saturday September 28th; an open day and vintage softball game on Sunday September 29th; and the final open day of the season, with stalls and military vehicles, on Sunday October 27th.

**Mike Ager**

# On parade at Albert Hall

**S**TRADBROKE & DISTRICT branch of the Royal British Legion, has been chosen along with Bures branch, to represent Suffolk with their standards at the Annual Festival of Remembrance at the Albert Hall this year in London. These standards not only represent those lost in war from these Branch areas, but also a tribute from the living population within the branch areas.

ON SUNDAY DECEMBER 15TH the branch are organising a Christmas Carol Service at Horham Baptist Church, by kind invitation of the Pastor Adam Blowes and Secretary Anne Jarrett.

The service, at 6pm, will be a commemoration to remember the start of the Second World War 70 years ago, and the start of the First World War 100 years ago. The guest speaker will

be, General The Lord Dannatt, GCB, CBE, MC, DL (former head of the British Army).

SINCE THE LAST ISSUE OF AHR News the branch has been active as usual with monthly meetings with guest speakers, plus the annual branch coffee morning, which raised £224.50 for branch funds. The coffee morning was held at a new venue this year, the home of Sam and Alison Hackett.

At our July meeting at Laxfield King's Head, treasurer Bernard Mills presented the years accounts and standard bearer and welfare officer Joyce Cooper reported on activities including taking the standard to Lowestoft Armed Forces Day.

The next branch meeting is at Laxfield King's Head on Thursday September 12th at 11.30am.

**Branch Chairman, Michael Burton**

**WINGS APPEAL:** September sees the Royal Air Forces Association make a special effort with its Wings Appeal to raise money for charitable work. Former and present members of the RAF and their families are helped with the cash RAFA collects. Among those who recently served and were injured in Afghanistan are RAF Regiment personnel from Honington. They deserve our support. The Diss RAFA branch, like many other organisations is finding it difficult to attract new members and volunteers to help with collections. If you are interested in joining (you do not have to have served in the RAF) or if you can help in any way please contact the secretary Marilyn Hurst on 01379 643108. Or you could just drop in on a branch meeting - the fourth Monday of the month at the Grasmere Club in Diss. You can find out more on their website - [dissanddistrictrafa.onesuffolk.net](http://dissanddistrictrafa.onesuffolk.net).

**Brian Ager**

**LADIES' LUNCH:** Redlingfield Ladies' Lunch is on Wednesday September 11th at 12.30pm at the Red Lion in Needham near Harleston. Contact Linda on 678984.

**CAR BOOT SALE:** Thank you to everyone who supported the church's car boot stall and purchased plants later raising £173.75 in total.

**Daphne Harvey**



**FRESSINGFIELD MUSIC FESTIVAL:** The festival, from September 24th to 28th, is the ninth and features some of the country's best musicians. There is a festival debut for world-famous flautist Stephen Preston who will feature in the baroque ensemble Badinage (Tuesday September 24th). Other new faces this year are the Dmitri Ensemble from Cambridge (Thursday September 26th) presenting a choral programme of English composers from Byrd to Britten in a candlelit concert. Concert pianist Meng Yang Pan will be returning by popular demand (Wednesday September 25th) and the lively and energy-packed Jazz Dynamos (Friday September 27th) will offer a blend of jazz, swing, latino and soul to get you dancing. The closing concert (Saturday September 28th) will be given by the Commonwealth Orchestra with an all-string line up. The orchestra will perform works by Elgar, Mozart and Bach as well as a piece written especially for the festival. As well as providing a festival of international standing, the event continues to raise funds for the restoration of the historically important organ of St Peter and St Paul. Festival box office 01379 5864. Info [fressingfieldmusic.com](http://fressingfieldmusic.com).

# Save money buying oil

**S**UFFOLK COMMUNITY Buying launched its oil buying scheme in January 2012. Since then, it has recruited more than 900 members across the county who have on average made savings of more than 5p per litre (including VAT) making an average saving per order of £40 plus.

We know there are a lot more people that could benefit from lower oil prices; particularly those that can least afford the ever-increasing costs of heating; the elderly and those on lower incomes who may not have access to the internet.

The scheme is open to everyone in Suffolk and the more people who join, the greater the savings. This will benefit all of us in the County and help the environment too by reducing delivery miles.

According to Consumer Focus, the government's consumer champion organisation, buying oil before the

winter period when demand is lower, offers better value than purchasing in the peak winter months. They also recommend people join group bulk buying schemes to help reduce the price paid per litre.

Suffolk Community Buying brings together orders from people all across Suffolk to get the very best price. Membership of the scheme is £20 a year but if you become a local co-ordinator for your area, membership is free.

If you would like to know more about joining the scheme, or are able to offer some help as a co-ordinator, do not hesitate to call 01473 345400, email [oil@communitybuying.org.uk](mailto:oil@communitybuying.org.uk), or for further information and to join online please visit our website [www.communitybuying.org.uk](http://www.communitybuying.org.uk).

*Natalie Lomas, Suffolk ACRE  
Community Buying, Community  
Action Suffolk*

# Big changes for caring

**C**ARERS AND COMMUNITY care are much written and talked about at the moment. In Suffolk we have some splendid care. We also have a lot of change and development.

Paddock House and its associated Wellbeing Centre in Eye have been run by private company, Care UK, since last December. The centre is open from Monday to Wednesday and provides social contact, events and entertainments, meals and whatever routine care is needed. Users either pay for themselves or apply to the social services for help with payments. People are invited to free 'taster' days. In future it will also open on Fridays and have flexibility to offer extra help if necessary.

Paddock House and the day centre will move to the Hartismere site when their new building is complete. Work is expected to start soon and it will probably be ready in about two years.

The building at Hartismere will consist of a 60 bed residential home and the wellbeing/day centre which will take 25 people for a single day or up to 7 days a week. In the centre there will be facilities for bathing and also washing machines for those who struggle with such tasks at home. There will be a computer and help in using it as well as various occupations and of course good meals.

Care in people's homes is either provided by the council or by one of a variety of private agencies. Care is

free to those who need it when they first leave hospital but a financial contribution is usually required after six weeks.

Council carers are well trained during day release courses covering all aspects of care; managing the seriously disabled, socialising with the sad or lonely, following health and safety rules, first aid and much more. Training is mostly in small groups with a senior manager followed by short tests to check that procedures have been learned. Care UK trains its own staff in similar fashion but also uses some on-line training programmes. This is an efficient way of learning facts but contact with a teacher is necessary to explore issues such as feelings for the job, questions, interests and so on.

Being a carer is rewarding and interesting. Meeting a variety of people provides new challenges. No two people are the same so there is much to learn, both from the different needs and also from hearing about different lives.

Notes are written after each home visit and in day centres a note is written about everyone three times a day. This is quite a lot and sometimes seems to intrude on time that might be spent with the users (now called customers). Clearly it would be quite impossible to read all the notes of all the days but a good manager does a proper handover as staff come and go on duty, this alerts her to any possible

**FLU CLINICS:** Walk-in seasonal flu clinics are being held at Fressingfield and Stradbroke medical centres in October. Sessions at Fressingfield are: Tuesday October 8th and 15th, 9am-11am and 2pm-3.30pm; and Friday October 11th and 18th, 9am-11am and 4 pm-5.30pm. Sessions at Stradbroke are: Monday October 7th and 14th, 9am-11 am and 4pm-5.30pm; and Wednesday October 9th and 16th, 9am-11am. You are eligible for a jab if you have: asthma or a chronic respiratory disease; chronic heart disease; chronic kidney disease; chronic liver disease; are diabetic; a weak immune system/immunosuppression; a history of stroke or TIA or Multiple Sclerosis or a disease of the central nervous system; or are over 65 years of age or are 65 prior to the March 31st 2014; pregnant; in receipt of carer's allowance, or are the main carer of an older or disabled person whose welfare may be at risk if the carer falls ill. Children aged two and three, but not yet four by September 1st, are also eligible – parents will be contacted to invite them for an appointment.

**THORNDON LEEK FEST:** Thorndon's village fete and music & beer festival is on Saturday September 14th next to the Black Horse pub from 11am. Entry is free to the event which aims to raise awareness of the Thorndon Leek Club, a group of volunteers that help to raise funds for local needy causes. There will be music from 11am to 8.30pm with a host of bands and solo artistes culminating with The Outlines, who headlined Ipswich Music Festival. There will also be stalls, a BBQ, competitions and guest ales, including one specially brewed for the event.

**HELMINGHAM HALL EVENTS:** The East Suffolk Game & Country Show on Saturday and Sunday September 7th and 8th (10am-5pm) will offer all day entertainment including birds of prey, working dogs, Medieval battle re-enactments and heavy horses. Admission is £7 for adults, £6 concessions, £3 children age 5-16, a family ticket for 2 adults and 2 children is £18 and accompanied children under 5 go free. The Plant Heritage Autumn Plant fair on Sunday September 15th (10.30am-4pm) gives plant lovers a chance to get their plant problems and apple queries answered by experts. Specialist nurseries will also be selling a wide range of unusual and popular plants. Entry to plant sale is £6 including admission to Helmingham Hall Gardens - tickets can be bought in advance by calling 01473 890799.

problem and then looking through the notes is invaluable. Of course a less involved manager could ignore the notes until there was a problem and then accountability could be an issue.

Starting salaries are often not a living wage, far too little when compared with many other, less demanding jobs. There is often some flexibility on hours so women find the job fits with family commitments and,

as usual, women are not paid as well as men.

There are some efficient and dedicated care managers in Suffolk, people who have been junior carers and so understand the job as it is, not simply as business management. It is to be hoped that such experienced managers will be encouraged to stay on and help with all the moves and restructuring.

*Evelyn Adey*

# Putting up with the sun ...

**A** HOT JULY AFTERNOON and the glaring sunlight is bouncing back off the white rocks and boulders all around us. After the walk up the valley the cooling sound of water splashing into a pool is very welcome; we are certainly going to have a nice tan when we get back home. But this is no Mediterranean sea-side resort – we are high up in the Yorkshire Dales, gazing in awe at the wondrous Gordale Scar. Today the sight of the gorge and the falls stir the memory so that in my mind I see myself nearly sixty years ago standing in perhaps the same spot as I do today. I was on my very first visit to anywhere north of Skegness as part of a school party on a geography field trip and we were studying the features that comprise a typical carboniferous limestone landscape. Over the days our workbooks were gradually filled with notes and sketches of various examples of scars, potholes, limestone pavements, swallow holes and caves with stalactites hanging from the ceiling and stalagmites growing up from the floor; all of which had been and were continuing to be formed by the action of hydrochloric acid diluted in rainwater upon the limestone.

Today as I look at the piled up rocks and the rushing water I feel that little has changed in the intervening years – the peregrine falcons are new, or so I believe and previously no cars were parked in the lane which runs quite near the Scar. A welcome innovation

on this hot afternoon is the ice-cream van dishing out refreshment to parched sight-seers. Such a facility would not have been available, although it would have been equally appreciated on such a day, to travellers in search of the sublime in the days of J M W Turner who recorded Gordale Scar in July 1816 while on a tour of Yorkshire.

Turner however had very different weather from us and his host, Mrs. Fawkes, writing of an outing to the Scar, records in her journal that the party, “Returned home in heavy rain. Mr. Turner went on a sketching tour.”

In fact he bade his host farewell at Malham and continued on over the moors – alone and on horseback, in the rain, towards Littondale and Wharfedale. Although we would perhaps have found these conditions trying, to Turner, the indefatigable recorder of the Romantic, these conditions would have been ideal (the darker and stormier the scene the better). In any case Turner was well compensated for any discomfort he may have suffered. He lived at a time when it was very fashionable to go sightseeing; to visit stately houses and to tour ancient cathedrals and abbeys (preferably in a state of ruin) as well as viewing sites of dramatic, scenic beauty. Resulting from this craze, there grew up a flourishing market for published accounts of such tours and especially for folios of prints of such scenes and in 1816 Turner was commissioned by Longmans to

**Gordale Scar  
in Yorkshire.**



illustrate a “General History of the County of York” for which he was to be paid 3,000 guineas – a staggering sum which would not be bad for today!

Regardless of the sum, on that day Gordale Scar, as a subject, eluded him. There is a large pencil and watercolour sketch in the Turner bequest but for whatever reason, no finished painting is known to us. To be fair, it is an overwhelming subject – a long narrow and twisting ravine, cut 300ft or so into the rock and in places only about 60ft wide with water thundering through at most times of the year and the cliffs on either side widely overhung at their base. As said earlier the weather, which was very wet during his visit would not have

deterred him. A partiality for inclement weather is shared by practically all painters of the British romantic school and later by the neo-romantics from Thomas Girtin through Turner himself down to such painters of the twentieth century as John Piper.

In 1942 John Piper was commissioned by the late Queen Mother, then the Queen, to do a series of paintings of Windsor Castle. When the set was complete it was presented by Piper to King George VI for his approval.

Always a reticent man and perhaps searching for something to say, the king finally commented “You’ve been pretty unlucky with the weather Mr. Piper”.

Yes. Turner would not have been at all happy with our good weather today – warm sunshine and blue skies – no drama in that! If compelled he might have faked it or exaggerated some aspect of the scene. He was never one to be put off by an undramatic subject – high exaggeration was his stock in trade. His watercolour of Aldeburgh is an example of this and the oil painting of Hannibal crossing the Alps is another. In the first, the church, although standing on higher ground at the back of the town cannot actually be seen from the view chosen by Turner but there it is on a mighty eminence, its tower lowering over the huddled mass of dwellings. Hannibal crossing the Alps is a large painting filled with the whirling vapours and towering rock

*Continued over*



## POLICE REPORT, FEATURES & NEWS

---



*Mid Suffolk North Safer Neighbourhood Team,  
PCSO 3172 Steven Long & PC 878 Jacqui Thomas,  
Eye Police Station, Mid-Suffolk North Safer  
Neighbourhood Team, The Lodge, Castleton Way,  
Eye, Suffolk IP23 7BH. Phone 101, email  
Midsuffnorth.snt@suffolk.pnn.police.uk*

THOUSANDS OF ITEMS OF property are lost or stolen each year in the UK. The Immobilise National Property Register already holds the details of 20 million items of property. Add yours now to help the Police stop property crime.

Register your property for free at [www.immobilise.com](http://www.immobilise.com), it only takes a couple of minutes and once you have registered, you will have a better chance of getting your property back if it's lost or stolen.

Immobilise can be used by members of the public and businesses to register valued possessions or company assets, and as a direct result of immobilise, there are more than 250 cases a week where property is returned or information collected that assists the Police in investigating criminal activity involving stolen goods.

The Immobilise system was set up in 2003 and has had the support of the Police, mobile phone industry and

central government since its inception. With the support of these and numerous other organisations during the past 6 years the Immobilise service has grown to service over 25 million members in the UK alone.

For the Police, the free Immobilise property registration service is a very powerful tool in the fight against crime. Immobilise along with many other information sources is linked directly to the Police NMPR (National Mobile Property Register). The NMPR allows officers to search the serial numbers of recovered goods or suspected stolen property and then take action accordingly.

Immobilise truly is a powerful service offering benefits to everyone, however please don't just take our word for it, have a look online and see what others have to say about the service.

For more information, please visit [www.immobilise.com](http://www.immobilise.com)

---

*Continued from page 11*

masses and just as you are beginning to wonder about the title you can just about make out a cowering group of diminutive elephants right at the bottom of the painting.

We, here and now, not having a commission to depict high drama or scenes of terror are free to enjoy the tranquil beauty around us. Yesterday,

we yomped up to the cairn at the top of Great Close hill above Malham Tarn and from its 465m. altitude were able to take in peaks and wooded dales stretching out for miles around in all directions; not a bolt of lightning or a raging storm in sight.

It's worth putting up with a bit of good weather for such an experience!

*Neville Butcher*

**WEDNESDAY, SEPTEMBER 4**

**Coffee Caravan:** Centre of Redlingfield, 10am-noon.

**THURSDAY, SEPTEMBER 5**

**Austen's Women:** Dyad Productions, 7.30pm, Diss Corn Hall.

**FRIDAY, SEPTEMBER 6**

**An Inspector Calls:** Open Space Theatre Company, 7.30pm, St Edmunds Hall, Hoxne, Barns (855101).

**SATURDAY, SEPTEMBER 7**

**Worlingworth summer social evening.**  
**Budapest Cafe Orchestra:** 8pm, Diss Corn Hall.

**SATURDAY & SUNDAY, SEPTEMBER 7 & 8**

**East Suffolk Game & Country Show:** Helmingham Hall, see page 9.

**WEDNESDAY, SEPTEMBER 11**

**Redlingfield Ladies' Lunch:** 12.30pm, Red Lion, Needham near Harleston (678984).

**FRIDAY, SEPTEMBER 13**

**Hoxne Cinema:** Hoxne Village Hall, St Edmund's Hall. Film TBC. £3.50.

**SATURDAY, SEPTEMBER 14**

**Suffolk Historic Churches Trust Bike Ride:** see page 23.  
**Thorndon Leek Festival:** see page 9.  
**An Inspector Calls:** Open Space Theatre Company, 7.30pm, Laxfield Village Hall.

**SUNDAY, SEPTEMBER 15**

**Plant Heritage Autumn Plant Fair:** Helmingham Hall, see page 9.  
**Behind the scenes:** Mid-Suffolk Light Railway.

**WEDNESDAY, SEPTEMBER 18**

**Horham & Athelington Parish Council meeting.**

**THURSDAY, SEPTEMBER 19**

**Stradbroke Cinema - Summer in February:** Stradbroke Community Centre. admission £5.50. 7pm for 7.30pm.

**SATURDAY, SEPTEMBER 21**

**Fram Horticultural Society Show:** United Free Church Hall 9.30am-11.30am.  
**Treasure Island:** 2pm, Diss Corn Hall.  
**Redlingfield Pub On The Green:** Doorstep Green, 6pm till late.

**An Evening with Suffolk's Charlie**

**Haylock:** Thorndon Village Hall, doors 7pm, 8pm start. Tickets £3 (678676).

**An Inspector Calls:** Open Space Theatre Company, 7.30pm, Wingfield Barns.

**SUNDAY, SEPTEMBER 22**

**Country Music:** Kevin Barry, Debenham Community Centre, 7.45pm-11pm, doors 7pm (01728 861101).

**TUESDAY-SATURDAY, SEPTEMBER 24-28**

**9th Annual Fressingfield Music Festival:** see page 7,

**THURSDAY, SEPTEMBER 26**

**Macmillan Cancer Support - World's Biggest Coffee Morning:** See press and noticeboards for local events.

**An Inspector Calls:** Open Space Theatre Company, 7.30pm, Diss Corn Hall.

**FRIDAY, SEPTEMBER 27**

**Comedy Club:** 8pm, Diss Corn Hall.

**FRIDAY & SATURDAY, SEPTEMBER 27 & 28**

**Antique & Collectables Fair:** Stonham Barns, entrance £3.50, Fri 10am-5pm & Sat 9am-4pm.

**SATURDAY, SEPTEMBER 28**

**Redlingfield & Occold WI Harvest Festival.**

**200th Mission dance:** Red Feather Club, with the 95th's own band Skyliner.

**SATURDAY & SUNDAY, SEPTEMBER 28 & 29**

**Platelayers' Gala:** Mid-Suffolk Light Railway.

**SUNDAY, SEPTEMBER 29**

**Show Jumping & Heavy Horse Show:** Stonham Barns. £6 adults, £3 children, under 4s free, £18 family ticket 2+3.

**Red Feather Club open day & softball game:** ,Wallopers vs Snowdrops.

**WEDNESDAY, OCTOBER 2**

**Coffee Caravan:** Centre of Redlingfield, 10am-noon.

**SATURDAY, OCTOBER 5**

**ORAC Western Themed Evening:** Occold.

**SUNDAY, OCTOBER 6**

**Horham Harvest Festival:** Service 11.15am at St Mary's followed by lunch at Horham & Athelington Community Centre (tickets Angela Wilkins - 384625)

## WHAT'S ON

---

### THURSDAY, OCTOBER 10

**Osilingi Troupe of Maasai Warriors:** 8pm, Diss Corn Hall.

### FRIDAY, OCTOBER 11

**Hoxne Cinema:** Hoxne Village Hall, St Edmund's Hall. Film TBC. £3.50.

**Kiki Dee & Carmelo Luggeri:** Wingfield Barns, 7.30pm.

### SATURDAY, OCTOBER 12

**Fram Sausage Fest:** Day of sausage tasting, judging & entertainment.

### SATURDAY & SUNDAY, OCTOBER 12 & 13

**Suffolk Robin Hood Game and Country**

**Show:** Suffolk Showground, Felixstowe Road, Ipswich, 9.30am-5pm. Adults £10 (£7.50 in advance), conc £8 (£7), children (5-16) £5 (£2), under 5s free. Info [www.robinhoodcountryshow.co.uk](http://www.robinhoodcountryshow.co.uk).

### THURSDAY, OCTOBER 17

**Stradbroke Cinema - Arbitrage:** Stradbroke Community Centre (as Sept).

### THURSDAY-SATURDAY, OCTOBER 17-19

**Flower Festival:** St Mary Magdalene Church, Debenham.

### FRIDAY, OCTOBER 18

**Quiz:** Stradbroke Community Centre.

### SATURDAY, OCTOBER 19

**Worlingworth Music:** Music from the 60s-90s with 'Everich'.

### SUNDAY, OCTOBER 20

**Country Music:** Westonline, Debenham Community Centre, 7.45pm-11pm, doors 7pm (01728 861101).

**Suffolk Singers Choral Workshop:**

Framlingham College, 9.30am-5pm. Free performance 4.30pm. Workshop, £17, under 19s free. Info 01473 625070 or [alison.bestow@gmail.com](mailto:alison.bestow@gmail.com).

### WEDNESDAY-FRIDAY, OCTOBER 23-25

**The Prisoner of Zenda:** Fram College.

### FRIDAY, OCTOBER 25

**Shappi Khorsandi:** 8pm, Diss Corn Hall.

### SUNDAY, OCTOBER 27

**Halloween Hoot:** Suffolk Owl Sanctuary.

### SATURDAY, NOVEMBER 2

**Fram's Firework Spectacular.**

**Horham Bonfire & Fireworks** night: see page 1.

### SUNDAY, NOVEMBER 3

**Help For Heroes Day:** Suffolk Owl Sanctuary, Stonham Barns.

**The Magic Flute:** The Merry Opera Company, 6pm, Diss Corn Hall.

### WEDNESDAY, NOVEMBER 6

**Redlingfield Coffee Morning:** Pauline Abbott at Rookery Farm, 10am-noon.

### FRIDAY, NOVEMBER 8

**Hoxne Cinema:** Hoxne Village Hall, St Edmund's Hall. Film TBC. £3.50.

### THURSDAY, NOVEMBER 14

**The Blues Band:** 8pm, Diss Corn Hall.

### SATURDAY, NOVEMBER 16

**An evening with Henry Blofeld:** The legendary Blowers from Test Match Specials at Wingfield Barns.

**Steel Magnolias:** Mustard Theatre Company, St Edmunds Village Hall, Hoxne.

### SUNDAY, NOVEMBER 17

**Country Music:** Clear Cut, Debenham Community Centre, 7.45pm-11pm, doors 7pm (01728 861101).

**Baroque Prom:** St Michael's Church, Framlingham, 3pm. Tickets £12 - free to school age students.

### THURSDAY, NOVEMBER 21

**Stradbroke Cinema - Song for Marion:** Stradbroke Community Centre (as Sept Stradbroke Cinema).

### SATURDAY, NOVEMBER 23

**Bedfield Christmas Bazaar:** 11.30am-2.30pm, Bedfield Pavilion.

### WEDNESDAY, NOVEMBER 27

**Horham & Athelington Parish Council meeting.**

### SATURDAY, NOVEMBER 30

**St John's Fabulous Christmas Sale:** St John Westbury Centre, Fairfield Road, Framlingham, 9am-noon.

### SUNDAY, DECEMBER 1

**Fram Christmas Charity Market:** 13th Annual Charity Market on Market Hill.

**Santa Special:** Mid-Suffolk Light Railway.

### WEDNESDAY, DECEMBER 4

**Redlingfield Coffee Morning:** Pat Kelly at Red Mill, 10am-noon.

**FRIDAY, DECEMBER 6**

**The Searchers Christmas Show:** 7.30pm, Diss Corn Hall.

**SATURDAY, DECEMBER 7**

**Christmas Tree Festival:** Opens in St Michael's Church Fram at 10am.

**SUNDAY, DECEMBER 8**

**Santa Special:** Mid-Suffolk Light Railway.  
**Jonathan Wyatt Big Band & Moonglow Sisters:** 7.30pm, Diss Corn Hall.

**FRIDAY, DECEMBER 13**

**Hoxne Cinema:** Hoxne Village Hall, St Edmund's Hall. Film TBC. £3.50.

**SATURDAY, DECEMBER 14**

**Santa Special:** Mid-Suffolk Light Railway.

**SUNDAY, DECEMBER 15**

**Santa Special:** Mid-Suffolk Light Railway.  
**Country Music:** Rancher Country, Debenham Community Centre, 7.45pm-11pm, doors open 7pm (01728 861101).

**THURSDAY-TUESDAY, DECEMBER, 19-24**

**The Canterville Ghost:** Fram College Theatre.

**SUNDAY, DECEMBER 22**

**Santa Special:** Mid-Suffolk Light Railway.

**WEDNESDAY, JANUARY 1**

**Redlingfield Coffee Morning:** News Year's Day at Midge and Chris Gibbons, Rush Meadow, 10am-noon.

**News Year Steam:** Mid-Suffolk Light Railway.

**Helmingham Hall,** 01473 890799, events@helmingham.com, www.helmingham.com;

**Hoxne Cinema:** Tickets from Jenny Knights 668060, Hoxne PO & Stores, or via www.hoxnevillagehall.co.uk; **Mid-Suffolk Light Railway,** Brockford Station, Wetheringsett nr Stowmarket, Suffolk Suffolk IP14 5PW, www.mslr.org.uk, general enquiries Keith Froom 01449 672670 or keith.froom@ftinternet.co.uk; **Museum of East Anglian Life,** Stowmarket, 01449 612229, enquiries@eastanglianlife.org.uk; **Redlingfield,** 678835, pc@redlingfield.suffolk.gov.uk, www.redlingfield.suffolk.gov.uk; **Suffolk Owl Sanctuary,** Stonham Barns, 08456 807897, info@owl-help.org.uk, www.owl-help.org.uk; **Wingfield Barns,** 384505, enquiries@wingfieldbarns.com, www.wingfieldbarns.com (Midweek Movies: Tickets £5 on the door, 1.30pm matinee and 7.30pm evenings). **Framlingham:** www.framlingham.com. Diss Corn Hall: Corn Hall, St Nicholas Street, Diss. Box Office: 652241 & boxoffice@disscornhall.co.uk. Full programme at www.disscornhall.co.uk

**MONDAYS: Ballroom dancing:** St Edmund's Hall, Hoxne, 7.30pm-9.30pm (for adults). Sandra Hartley, 01728 723887.

**TUESDAYS: Bingo:** Thorndon Village Hall, 7.30pm every other Tues. 678178. **Zumba:** Horham & Athelington Community Centre, 7pm, Terri Cave, 01728 627756 & 07563534086

**WEDNESDAYS: Redlingfield & Occold WI,** 1st Wed of the month at, 7.45pm, in Occold Village Hall. **Hoxon Hundred:** Summer dance-outs at local pubs. Winter practices. Ron Ross, 643563. Eye Country Market, every Wed 10am-11am, Eye Town Hall (closed Jan).

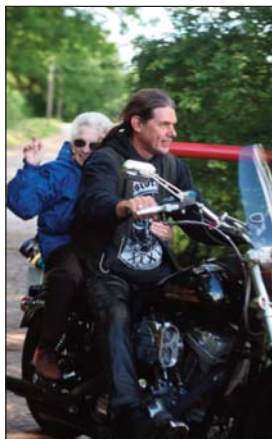
**THURSDAYS: Keep fit classes:** 8pm, Worlingworth Village Hall, all abilities, lose weight, tone up – £4 per session. Call Sarah on 07884 186849 for details. **Hoxne Garden Club:** 3rd Thurs St Edmund's Hall, Hoxne, 7.30pm **Zumba:** Worlingworth Community Centre, 7pm, Terri Cave, 01728 627756 & 07563534086

**FRIDAYS: Bingo:** Stradbroke Community Centre, Wilby Road, 2nd Fri monthly. 7.30pm. Mary Ellis, 384642.

**FRIDAYS/SUNDAYS: Traditional music:** Worlingworth Swan, 2nd Fri evening of month in summer & summer. Sun lunch in autumn & winter.

**SATURDAYS: Occold Market & Car Boot:** Occold Village and Village Hall, 9.30am-noon, last Sat of the month from March to November.

**SUNDAYS: Open days:** Red Feather/95th Bomb Group Heritage Association & 95th BG Hospital Museum last Sun of month April-October inclusive,



# 95th welcomes the magnificent seven

**T**he 70th Anniversary Reunion was always going to be special – but no-one really knew how special. Seven veterans and two of their spouses were among the 51 Americans, both young and old, hosted by the 95th Bomb Group Heritage Association for the 70th Anniversary Reunion in June.

The visit, within a few days of the actual 70th anniversary – the 95th officially arrived in Horham on June 15th, 1943, included seven 95th Bomb Group veterans. Linda Woodward and Beverley Abbott, who stepped in to take over from John and Kate Kirkum who had organised reunions for many years, spent almost a year organising the event. Their hard work, and the efforts of the countless others involved, paid off and rewarded visitors and locals with a reunion to remember.

The reunion began with the traditional wreath-laying at Madingley American Cemetery in Cambridge and then a trip to a new memorial at Alconbury.

That evening our guests got their first sight of the Red Feather Club complete with its new gateway – based on an original picture unearthed by the association – which greeted them when they arrived at the Red Feather Club for a traditional English bangers and mash dinner.

On Saturday a military vehicle tour of Horham Airfield stopped at Redlingfield to lay a wreath at the memorial. Back at the Red Feather Club the 95th's Wallopers and the 1285th Military Police's Snowdrops braved the showers for a short softball game and our visitors joined in.

---

● *Veteran visitors were: Jack Bertram, pilot, 412th Bomb Squadron; Harry Hull, bombardier, 412th BS (part of Bertram crew as above); Herb Wilkov, navigator, 336th BS (Garrison and Lennox crew); Irv Rothman, top turret gunner/flight engineer, 336th BS (Foley crew); Ed Yursky, tail gunner, 336th BS (Severson crew); Ben Roujansky, radio operator, 336th BS (Trobovich crew); and Bob Fay, ball turret gunner, 334th BS (Hiram Griffin crew).*





Veteran Bob Fay said: "I love it here, and I'll keep coming back if I can. Sure, war is hell, and I saw a lot in the back of that plane. But I have a lot of memories of this place, and I met some great people while here."



Philip Mutton and Carmel Hannant drew a big crowd to the Blue Lounge. Later that afternoon the Red Feather Club ladies, in waitress outfits, served traditional afternoon tea with homemade cakes, which turned into a sing-song and dance.

That evening the Red Feather Club's band Skyliner played a number of sets. Red Feather Club regulars and our visitors danced and talked the night away.

In the evening the bells of St Mary's Horham, restored thanks to the efforts of 95th veterans in 1992, rang out for a service of thanksgiving. After the service a wreath was laid at the 95th BG Memorial in the village.

Sunday has traditionally been a public open day at the Red Feather Club on previous reunions but this year it was for members and invited guests only. A number of USAF personnel visited and made up an impressive honour guard. During the afternoon an impressive presentation on the 95th put together by

There were also trips to Ickworth House, Rougham Control Tower Museum, Holt and the historic North Norfolk Railway to Sheringham.

For more on the Red Feather Club see page 5. *Mike Ager*



**Top: At a wreath-laying ceremony at Madingley are from left: Bob Fay, Herb Wilkov, Irv Rothman, Ed Yursky, Ben Roujansky, Harry Hull, Jack Bertram & James Mutton. Left: Redlingfield memorial. Far left, from top: Bob Fay's wife Gloria goes for a ride; the new Red Feather Club gateway; Tom & Beverley Abbott at Redlingfield for the wreath-laying.**

## IN MEMORIAM

---

### **DERRICK GIBSON-HARRIES 1932-**

**2013:** Born in Sandbach in Cheshire he went to Verdin County Grammar where he was head boy, captain of soccer and chairman of the science society. At King's College Durham he achieved BSc (Hons) in physics and geology and was Champion of the Faculty at Foils. He joined the RAF in 1954 and went to the Joint Services School for Linguists. Derrick married, had five daughters and later divorced. After working in various chemical industries he joined publishers Macmillan and was posted to Gill & Macmillan in Dublin, where I first met him. After being made redundant (to a computer he said) he joined me in Blessington in Co. Wicklow where we were married in 1987. When I joined the Church of Ireland as press officer in 1986 we were posted to Armagh in Northern Ireland and Derrick went to



Queen's University Belfast where he gained a BA (Joint Hons) in archaeology and social anthropology. After working for the Ulster Society for two years we decided to return to England. We lived in the Fens near Wisbech for five years and moved to Horham in 2005.

Derrick kept himself busy at Morrisons in Diss until failing health meant he was not able to work. Over the last few years he had taken great interest in my ward, Hoxne in Mid Suffolk District Council, planning election strategies and attending functions where he could. He loved reading and recently discovered the joys of kindle. He was a member of a shooting club where he shot black powder. He enjoyed his last few years here in Suffolk and is laid to rest in the lovely and peaceful grounds of St Mary's Horham.

Greatly missed Derrick.

***Elizabeth Gibson-Harries***

### **FREDA HARVEY 1923-2013:**

The funeral took place at St Mary's, Horham, on Thursday, 23rd May, followed by burial in the churchyard, of Freda Harvey who died on 13th May in Ipswich Hospital aged 89 years. Freda was born in Denham in 1923 and was named after her father, Fred, who died before she was born. The family, her mother, a sister, Doris, and two



brothers, Leonard and Douglas, moved to Reddingfield and then to Roses Farm, Horham, during the war. She met Charlie Harvey at Athelington Church and they were married at Horham in 1948. Geoffrey and Enid were born at Yew Tree Cottage, and they moved to 1 Manor Park in 1953 where Sheila was born. Freda used to take the children, and tea, to Southolt Hall, where

**HARRY KEEBLE 1929-2013:** Harry Keeble died at home in St Mary's Close, aged 83 years, on April 30th, and a Service of Thanksgiving for his life was held in the parish church on May 15th following cremation earlier that day at West Suffolk. Harry was born on July 22nd 1929 in Stradbroke and lived with his mother, father and brothers, John and Kenneth, until he married Poppy in 1954 and came to Horham. He worked on two farms in Stradbroke, and then went from Horham to join Victor Hawes War Ag. Gang, mainly at Reg Harvey's, at Tannington. Then he spent thirty-three years as caretaker at Stradbroke High School, always maintaining the highest standards there. In the early days of his marriage, he went with Poppy to Norwich Speedway on Saturday nights, until it closed in 1964. (He was very pleased to meet the famous speedway rider, Ove



Fundin, when he came to Horham in October 2012.) He then had a different interest with the birth of their daughter, Karen, in 1964, followed by Barry in 1966. When they grew up, he took Poppy every Saturday night to the ballroom dancing at Wilby until his illness prevented it. They also enjoyed many holidays in Europe. He was always active for St Mary's Church, in particular helping to keep it clean. Another hobby was his membership of the Friends of the 95th Bomb Group. He joined others to make a great contribution to the wellbeing of Horham by going to Slough in 1981 to take down the buildings there, which were put up again to be the Community Centre, and he helped Walter Goodchild to paint it out. He is also remembered with great affection by Paul and Helen, and his granddaughters Katherine, and Gemma and her husband, David.

Charlie was gathering in the harvest, and also to Horham churchyard where he cut the grass and made the hay. Freda was known to the young families in Horham as being strong and strict, but also kind and generous. Her care for their daughter, Lucy, was much appreciated by John and Sara Capon. As the years went by, she was a much-loved mother-in-law, grandmother and great-grandmother. She was a founder-member of the W.I. and later the president, and was ready to join the Happy Circle, Horham's own Over-

Sixties Club, in 1983. With Charlie she was an enthusiastic member of the Carpet Bowls Club at the Old School, travelling all over Suffolk and Norfolk to matches. Always a member of the Church, and active with the Sunday School and the Youth Group years ago, she served as churchwarden for 12 years after moving to St Mary's Close in 1988. Finally, from 2004, her home was at Coopersfield in Debenham, where she made new friends, while she still enjoyed attending various events at Athelington and Horham.

**PETER HANKIN 1925-2013:** Little did Horham realise in the late 1940s what an impact Peter, with his mother and father would have on the village and local community. Many have heard how from Surrey the farm effects were brought by chartered train to Diss railway station and from there to Horham Hall. This included various farm machines and household items. He and the family quickly adapted to the locality and became involved in village life, amongst which included the Parish Church, for which he organised waste paper collection and storage, the parish council, village halls and local committees. Peter always welcomed visitors to the hall and farm. Many local youngsters will have claimed to have first driven a vehicle or tractor in his fields or farmyard. One of his many interests was in machinery, especially rare and interesting tractors of which he amassed a large collection.



He always enjoyed driving and owning older cars which included Morris Minors, Hillman Imps and Triumph Heralds. Steam rallies and car gatherings were always popular with him and he made four trips to The Great

Dorset Steam Fair. Being a very

committed and responsible dog lover he had kept Dalmatians,

German Shepherds and raised several litters of pups from them. Many local people have spent happy hours fishing in his farm ponds and moat, catching frogs, newts and fish. In 1988 when he

retired and went to live in

South Green, Hoxne, the

village of Horham became

gridlocked with cars and people attending his dispersal sale. Always willing to help people, and at local events, he will be greatly missed in Horham and the surrounding area, and at farm sales and auctions.

***Compiled and written by his many friends.***

**WINTER COFFEE MORNINGS:** While still enjoying the monthly visits of the Coffee Caravan and summer weather it is time to plan Redlingfield's winter coffee mornings. The dates and venues are as follows: Wednesday November 6th, Pauline Abbott's Rookery Farm; Wednesday December 4th, Pat Kelly's Red Mill; Wednesday January 1st, New Year's Day at Midge and Chris Gibbons' Rush Meadow; Wednesday February 5th, Linda Hudson's Woodvale; Wednesday March 5th, Jacqueline Love's Western Barn, Abbotts Meadow. Everyone is welcome.

***Jacqueline Love (678805)***

**ATHELINGTON THANKS:** Thank you to everyone who came to support Athelington church at its Patronal Festival and lunch at Meadow Farm. It was a most enjoyable day and we added over £700 to church funds.

***Evelyn Adey***

**FLOWER FESTIVAL:** Redlingfield's Flower Festival in June raised more than £750.

**PADDOCK HOUSE WELLBEING CENTRE:** Paddock House in Eye is adding a Friday service plus extending existing wellbeing services. Info from Sally on 0333 3218605.

## DR DAN POULTER, YOUR LOCAL MP, REPORTS BACK



I AM OFTEN ASKED FOR advice by younger constituents about how to enter the medical profession and I am pleased to tell them that there has been considerable improvement from two decades ago when both women and people from ethnic minority backgrounds struggled to break into the closed shop of admissions to Britain's medical schools. In recent years we have taken great strides towards a more meritocratically selected medical workforce. Today, more than half of medical students are women and the profession has become more ethnically diverse. But there is still more to do to ensure that the world of medicine represents modern Britain.

It is still the case that a typical doctor working in the UK grew up in a family earning two-thirds more than average. There are several reasons for this. For a start, aspiration matters – parents and schools make a huge difference. If you don't start with the belief you can be a doctor, then the chances are you won't become one. If you don't have anyone supporting you in that belief, then it's even harder.

Many medical schools look for evidence of a long-held desire to enter medicine and for suitably "caring" work experience. But recruiting people based on their ability to show a track record of caring on their UCAS form could exclude those from poorer backgrounds.

Demonstrating work experience or time spent volunteering in the health and care sector is more difficult for those where a medical career was never encouraged as

a realistic option by school or parents from a young age. If you are from a deprived background you are unlikely to have undertaken work experience in a clinical setting to get you an interview at medical school, even though you might make a fabulous doctor.

There is hope for making social mobility in medicine a reality. A new report from the UK Medical Schools Council outlines some of the answers, such as work experience programmes with GPs, hospitals and care homes, targeting children who receive free school meals.

Some medical schools are also piloting aptitude tests for prospective students. Testing raw ability in addition to A-levels may help to level the playing field. And through part-time medical degrees, we can open up the system to encourage people from a wide range of backgrounds, including both working and full-time students, to apply.

There's also evidence that academy schools are raising the aspirations of less well-off children – over the past year, the GCSE results of our poorest pupils increased faster in sponsored academies than state-funded schools, and faster than in comparable local authority-run schools.

A medical profession that more accurately reflects the society it serves will be better and stronger for it.

● *I hold regular constituency advice surgeries locally to help people who have problems. If you think that I may be able to help, contact me on 01728 685 148, or email via [www.drdanielpoulter.com](http://www.drdanielpoulter.com).*

**Dr Dan Poulter, MP**



## CHURCHES

---

**C of E Services:** St Andrew, Redlingfield; St Peter, Athelington; St Mary, Horham; St Peter and St Paul, Hoxne. Enquiries to: Daphne Harvey, Horham (384216); Evelyn Adey, Athelington (01728 628428) Hazel Abbott, Redlingfield (678217).

**Sept 1st** **Horham**, 11.15am family service; **Redlingfield**, 9.45am.

**Sept 4th (Wed)** **Hoxne**, 7.30pm, Michael Womack's installation as the new rector

**Sept 8th** **Horham**, 9.30am.

**Sept 15th** **Athelington**, 9.45am.

**Sept 22nd** **Horham**, 11.15am family service;  
**Redlingfield**, 9.45am morning prayer.

**Sept 29th** **Syleham**, 11am, Harvest Benefice service.

**Oct 6th** **Horham**, 11.15am, Harvest festival - followed by lunch at Horham & Athelington Community Centre (tickets Angela Wilkins - 384625);  
**Redlingfield**, 9.45am.

**Oct 13th** **Horham**, 11.15am family service.

**Oct 20th** **Athelington**, 9.45am, Harvest Holy Communion.

**Oct 27th** **Horham**, 11.15am family service; **Redlingfield**, 9.45am, Harvest.

**Nov 3rd** **Horham**, 11.15am; **Hoxne**, 4.30pm, All Saints.

**Nov 10th** **Remembrance Sunday - Horham**, 3pm; **Hoxne**, 10.45 am;  
**Redlingfield**, 4pm.

**Nov 17th** **Athelington**, 9.45am.

**Nov 24th** **Horham**, 11.15am family service;  
**Redlingfield**, 3pm, St Andrew service.

**Dec 1st** **Athelington**, 4.30pm, Advent Carol Service; **Redlingfield**, 9.45am.

**Dec 8th** **Horham**, 9.30am.

**Dec 15th** **Athelington**, 9.45am.

**Dec 22nd** **Horham**, 4.30pm, Carols.

**Dec 23rd (Mon)** **Redlingfield**, 6.30pm, Carols.

**Dec 24th** **Athelington**, 6pm, Christmas Vigil.

**Dec 25th** **Redlingfield**, 9.30am.

*(Please check times on notice boards. Holy Communion unless otherwise stated.)*

**Horham Notices: Weddings:** June 8th - Robyn Gowers & Mark Harrington. **Funerals:** May 23rd - Freda Florence Harvey (aged 89); July 3rd - Derick Gibson-Harries (aged 81); July 27th - Hubert Peter Hankin (aged 88). **Cremations:** May 15th - Harvey Augustus Keeble (aged 83), This was followed by a thanksgiving service at St Mary's and burial of ashes on June 15th.

**New Rector:** The Bishop of St Edmundsbury and Ipswich, Nigel Stock, is due to install Michael Womack as the new rector on Wednesday September 4th in Hoxne church at 7.30pm. It will be the last time Bishop Nigel be in the benefice as he is going to work with the Archbishop of Canterbury at Lambeth Palace. All seven churches in the benefice are involved in the ceremony at Hoxne.

### **AFTER TWO YEARS OF PERFECT STORMS** by Manday Miller

*Two years of weather so bad it put more than MUD in your eye?*

*The sun had hid behind more than fifty shades of gray cloud!*

*The rain was never far away we always had gray sad days?*

*The perfect storms were bad for us, it was worse for wildlife!*

*Two years of NO butterflies, no sun, not one waft of warmth?*

*Wheat, rye, barley have not been as high as an elephant's eye!*

*BUT this year the rape, wheat and barley are golden small perfectly formed?*

*Butterflies flutter by, flowers are shorter, brighter fruit is being fruitier!*

*Wildlife is not so wild & cross at the bad weather?*

*Whether we like it or not when weather is not nice we all suffer!*

*Some years are good and some are bad whether we like it or not!*

*Every year we all have challenges to face mountains to climb?*

*After years of perfect storms how we need perfect calm & peace!*

**32ND HISTORIC CHURCHES BIKE RIDE:** The annual Suffolk Historic Churches Trust bike ride is on Saturday September 14th from 9am to 5pm. So get on your bikes to help your local churches and remember you can also walk between churches instead of cycling. The money raised by visiting as many churches as possible is split 50:50 between the church you pick and Suffolk Historic Churches Trust. The local organisers are: Daphne Harvey, Horham (384216); Evelyn Adey, Athelington (01728 628428); and Joan Abbott, Redlingfield (678736).

**CHRISTIAN AID WEEK:** Thank you to the collectors and all who contributed to the Christian Aid Week collection raising £330.60 in Horham and £36.12 in Athelington (plus £42.61 Gift Aid).  
**Daphne Harvey**



**PAUL DURRANT & SON LTD**

**BUILDERS**



Church Farm Bungalow, Rishangles, Eye, Suffolk IP23 7JX

Tel/Fax (01379) 678485 Mob 07798673946

Email [mail@pauldurrant.plus.com](mailto:mail@pauldurrant.plus.com)

*All types of work undertaken*

**Extensions, Renovations, Alterations, Repairs,  
Council Grant Work**

**FREE ESTIMATES**



## Fiona Patrick's Therapies

Relax and Unwind...

Massage is beneficial for aches, pains, tension, stress, headaches, relaxation, general well-being and so much more...

Holistic Massage - Hot Stone Therapy  
Reflexology - Indian Head Massage

**Website - [www.fp-therapies.co.uk](http://www.fp-therapies.co.uk)**

Take some time out and look after yourself...

Give me a call - I'm only in BRUNDISH

01379 388458 or e-mail: [Fiona@fp-therapies.co.uk](mailto:Fiona@fp-therapies.co.uk)

01728 628233

*Athelington Hall*



*Corporate*



*Log Cabin Holidays*



*Weddings*

*We also specialise in Log Roasts for up to 180 people on site or they can be delivered  
Smaller function room available with kitchen for the smaller function*

Athelington Hall Horham Eye Suffolk IP21 5EJ  
[www.athelingtonhall.co.uk](http://www.athelingtonhall.co.uk) [peter@athelingtonhall.co.uk](mailto:peter@athelingtonhall.co.uk)

# UNDER ONE ROOF

## Mark Bancroft Paving Services

Specialist in all types of paving and hard landscaping

Driveways, patios, ornamental garden walls, water features, drainage and fencing

Family run business with more than 20 years of on-the-job experience

*Fast friendly professional*

*Fully insured and all work guaranteed*

*Call for Mark for friendly visit with a free quotation*

*01379677027 or mobile 07768636618*

# SPURLING & REMBLANCE



## MOTOR ENGINEERS



## MOT TEST CENTRE

\*Service and repairs to all cars, light commercial and 4x4's\*

\*Specialists in vehicle diagnostics\*

\*Free local collection and delivery \* Courtesy car available\*

\*Prompt attention assured \* Competitive rates\*

**(01379)384689**

Open 8:00 am -5:30pm Mon-Fri, 8:00am -12 noon Saturdays

Barley Hall, Laxfield Road, Stradbroke. IP21 5NQ

Located on the B111 7 - 1¾ mile outside Stradbroke, towards Laxfield

## Susan Whymark Funeral Service Ltd



Independent and Family Run

- Funerals arranged by trained experienced staff in our friendly office environment or in the comfort of your own home
- Free transport for visits to registrars, our Chapel and other related appointments
- Bereavement support group Open to all in need

Office & Chapel of Rest located at  
The Old Stables, Chestnut Farm  
Langton Green, Eye  
Suffolk, IP23 7HL

Independent of Any Large  
Corporation and Truly Owned  
And Run by The Whymark Family

24 Hour Telephone Number **01379 871168**

[www.susanwhymark.co.uk](http://www.susanwhymark.co.uk)  
email [susan@susanwhymark.co.uk](mailto:susan@susanwhymark.co.uk)



# MINI DIGGER & DUMPER HIRE

Two tonne & four tonne diggers  
available & many attachments

Diggers £50 per day or £200 per week

Dumpers £25 per day or £100 per week

Plus transport & VAT



***Call Tony on 07949608243 or 01379 870514  
Based in Denham***



# HILL FARM HOUSE HORHAM

Bed & Breakfast  
01379 388832

[www.hillfarmbb.moonfruit.com](http://www.hillfarmbb.moonfruit.com)



**Safe & Sound**  
Hygiene and Pest Control

- Have you a problem with -
- Rats, Mice, Moles, Wasps or Rabbits?
- All typical Pests controlled.
- For ALL your Domestic / Commercial Pest Control.
- No obligation – free survey/quotes.
- Please call,
- 01379 788865 / 07809 226109 / 07518 731106

[www.safeandsoundhygieneandpestcontrol.co.uk](http://www.safeandsoundhygieneandpestcontrol.co.uk)



Home heating oil? We have got it covered

DISS

01379 652764



- Home heating oil
- Agricultural fuels
- Auto top up facility
- Monthly payment scheme
- Gas oil & road diesel
- Lubricants
- Boiler servicing

[www.watsonfuels.co.uk](http://www.watsonfuels.co.uk)



FULLY INSURED  
FULLY QUALIFIED

PROFESSIONAL PEST WILDLIFE MANAGEMENT

MOBILE: **07806 875985** HOME: **01379 852950**

[www.norfolkpestcontrolservices.co.uk](http://www.norfolkpestcontrolservices.co.uk)

# YOUR RELIABLE LOCAL PLUMBER



Anglian Water Approved

**Mark Jardine**  
Plumbing & Heating



- All Household Plumbing, Large or Small
- Full Bathroom Installation
- Domestic Heating, Radiators, Pumps etc.
- Water Softeners
- All Work Anglian Water Certified
- Free Estimates & Fully Insured
- 24 Hour Emergency Call Out

**Tel: 01379 672 904 Mob: 07854 924 801**

Email: [mark.jardine@virgin.net](mailto:mark.jardine@virgin.net)

**Very special, delicious  
and unusual cakes  
made to order**

**Castles, fairies,  
dragons,  
beautiful  
wedding,  
anniversary  
and birthday  
cakes**

**Liz Gibson-Harries**  
Rose Cottage  
The Street  
Horham. 01379 384680  
email: [all@gibson-harries.fsnet.co.uk](mailto:all@gibson-harries.fsnet.co.uk)

**BOWHILL  
BOOKS**

*Interesting and collectable  
books bought and sold*

*Book searches & valuations*

Call Chris Mawson

**01379  
870737**

## Robert Cole Plumbing & Heating

Plumbing & Heating Installation

Oil Boiler Servicing

Woodburner Service & Installation

Air-Source Heat Pumps

Bathroom Refurbishment

Emergency Call Out

Mid Suffolk & South Norfolk



Free Estimates

01379 741485



[rcoleplumbingservices@gmail.com](mailto:rcoleplumbingservices@gmail.com)



Your little one's early years are magical

You are very welcome to visit, and see all that  
our school and nursery have to offer

All lead nursery staff are fully qualified teachers

Our nursery is fully integrated with the rest  
of our warm and welcoming school

Come and see our special focus on  
music and drama throughout the school

Places available for children aged 3 and 4

Stradbroke Road, Wilby, IP21 5LR  
(01379) 384708  
[admin@wilby.suffolk.sch.uk](mailto:admin@wilby.suffolk.sch.uk)

**Everyone a Star!**

- ◆ *Therapeutic Massage*
- ◆ *Aromatherapy*
- ◆ *Reflexology*
- ◆ *Organic Facials*
- ◆ *Ear Candles*
- ◆ *Indian Head Massage*



**Lara Brown**

ITEC MCTha MAR

Eye 01379 870707  
Complementary Medicine Centre

Diss 01379 871926  
Osteopathic & Natural Health Clinic



[www.relax-revitalise.com](http://www.relax-revitalise.com)  
[lara@relax-revitalise.com](http://lara@relax-revitalise.com)



**Professional Servicing & Repairs.**  
**Class 4 & 7 MOT Centre.** 



**Diagnostics on Engine management, ABS,**  
**Air-bag, Climate control & Body modules.**



**Body shop & Accident repair centre.**  
**Recognised by most insurance companies.**



**24hr Recovery & Roadside Assistance.**



**Fully Equipped HGV bays for service & repair.**  
**Periodic maintenance checks & Test prep.**  
**Horse boxes & Race transporters Welcome.**

**Cowhams**  
**Car & Commercial**

**Fressingfield**  
**IP21 5QT**  
**01379 388 999**

**Please visit our website**  
**[www.cowhams.co.uk](http://www.cowhams.co.uk)**  
**to view our full list of**  
**services.**



**Cowhams**  
**Van Hire**



**Van & Truck Rental At Very Competitive Prices**

**Rates for adverts in four issues**  
**distributed to approximately 300**  
**homes in Horham, Athelington,**  
**Redlingfield and surrounds are:-**

1/6 page £8.50 (60mm deep,  
60mm across)  
1/3 page £16.50 (60mm deep,  
125mm across)  
1/4 page £12.50 (90mm deep,  
60mm across)  
1/2 page £25 (90mm deep,  
125mm across)  
A whole page £50

**You can supply the artwork and/or**  
**logos or we can design the adverts for**  
**you.**

Revenue goes towards the costs of  
producing the magazine and profits  
will be split between Horham &  
Athelington Parish Council and  
Redlingfield Village Meeting.

TEL: 01508 532 282

Mobile: 07532 120 975

E-mail: [dtyrrellwindows@gmail.com](mailto:dtyrrellwindows@gmail.com)

[www.dtyrrellwindowsanddoors.co.uk](http://www.dtyrrellwindowsanddoors.co.uk)

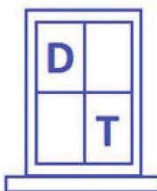
### **D TYRRELL WINDOWS & DOORS**

Upvc Windows and Doors:

Conservatories, & replacement  
glazing:

Garage door replacement & repairs;

Locks, fascia and soffits.



FENSA  
REGISTERED

**Ring for a free,**  
**no obligation**  
**quote today.**



## *Simply Beautiful By Anne*

*Weddings, Bridesmaids,  
Ball Gowns, Curtains,  
Cushions, Alterations  
and much more*

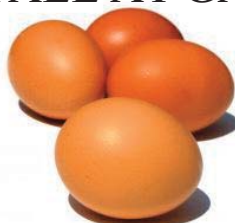
*Free Estimates Given*



*Magnolia House,  
Wilby Rd,  
Stradbroke  
Tel: 01379 384097  
Mob: 07944 894757*

## **FRESH FREE RANGE EGGS**

**Poplar Hall Farm  
Occold Road  
Redlingfield  
STALL AT GATE**



**For larger orders please  
call 01379 678318**

## **Chainsawing Services**



- General tree felling and cutting of large or small garden trees
- Cutting up fallen trees/branches
- Also: Hedge cutting and strimming

Large and Small Jobs Welcome  
No VAT Charged - Fully Insured

Please contact **ANDREW**  
**01379 783335**

## **CHIMNEY SWEEP**

### **ECO SWEEP** CHIMNEY SERVICES

- NEW POWER SWEEPING METHOD USED FOR A MORE THOROUGH CHIMNEY CLEAN THAN BRUSHES.
- INDUSTRIAL HEPA FILTERED VACUUM.
- FULLY INSURED.
- INSURANCE RECOGNIZED CERTIFICATES ISSUED.
- SPOTLESS, RELIABLE AND FRIENDLY SERVICE.
- ALL CHIMNEYS, WOOD BURNERS, AGA, BOILER FLUES SWEEP.
- GUILD OF MASTER SWEEPS CERTIFICATED MEMBER.



**TEL. 01359 232335**



**If you need a tradesman, we can help**

**\* Free Estimates \***

- Bathroom suites
- Any Electrical Work
- A new house or extension
- Gas or Oil Boiler Service & Maintenance

Electrical Services · Boiler & Heating Maintenance · Building Maintenance & Refurbishment · General Building · Plumbing

MY Group, Fen Lane Farm, Watton Rd. Larling, Norfolk NR16 2AJ  
Tel: 01953 497177 Fax: 01953 497160 Email: [info@mygroupea.co.uk](mailto:info@mygroupea.co.uk) Web: [www.mygroupea.co.uk](http://www.mygroupea.co.uk)  
MY Group is a trading name of MY Boiler Services Ltd



# Barley Green Garage

Laxfield Road, Stradbroke, IP21 5JT

Telephone 01379 388 947

[www.barleygreengarage.com](http://www.barleygreengarage.com)

After hours call Julian 07733 118100

Servicing • Repairs • Tyres • Exhausts • Batteries • Air-Con • MOT Testing

*Servicing, Repairs & MOTs*



**Welding and Diagnostics**



*Air-con servicing from £20*



**Coal, logs & kindling**



*Parking sensors & Tow-bars*



**LPG Auto-gas filling station**



*Courtesy cars available*



**Free local collection & delivery**