

# **Athelington, Horham & Redlingfield NEWS**



**AUTUMN 2012  
Issue No. 19**



If you need a tradesman, we can help

**\* Free Estimates \***

- Bathroom suites
- Any Electrical Work
- A new house or extension
- Gas or Oil Boiler Service & Maintenance

Electrical Services · Boiler & Heating Maintenance · Building Maintenance & Refurbishment · General Building · Plumbing

MY Group, Fen Lane Farm, Watton Rd. Larling, Norfolk NR16 2AJ  
Tel: 01953 497177 Fax: 01953 497160 Email: [info@mygroupea.co.uk](mailto:info@mygroupea.co.uk) Web: [www.mygroupea.co.uk](http://www.mygroupea.co.uk)  
MY Group is a trading name of MY Boiler Services Ltd

**OUR VILLAGES**

*have been in the news with stories ranging from the retirement of Rev David Streeter and a campaign to get the Brome speed camera switched back on – both of which feature in this issue – and from the cancellation of the Bygones Rally, to 17-year-old Joelle Sleaf's trip from Horham to Moldova to help a school in a deprived area.*

SUMMER WAS MORE THAN A LITTLE disappointing with the annual Horham Bygones Country Rally becoming one of the many major events in Suffolk to be cancelled due to bad weather. It proved to be hard work for all cancelling the rally at the last minute but thanks to the efforts of the organisers the word got out to all but a handful of people.

**IN NOVEMBER WE'RE ALL GETTING A chance to go to the polls. This time it's for the new post of Police and Crime Commissioner. While I think it's a slightly mad – if not bad – idea you can be sure I'll be voting on November 15. After all it's an important job – setting policy for the Police across Suffolk.**

AND FINALLY, MANY THANKS TO ALL THOSE who take time to make this magazine possible, the contributors, deliverers, advertisers et al. **Mike Ager**



**PLOUGH DAY:** An old-time machinery working day is being held on the land beside Horham & Athelington Community Centre on Saturday September 8th from 10.30am onwards. It is invitation-only for exhibits but entry and parking is free for spectators although there will be a collection for charity. For more information contact Don Moyes (388129 or 07894 903829).

*Front page picture of Rev David Streeter by kind permission of the Diss Express newspaper [www.dissexpress.co.uk](http://www.dissexpress.co.uk).*

If you would like to advertise or contribute to the magazine or have an event or organisation you would like featured contact: Evelyn Adey on [evelynadey@e1603.fsnet.co.uk](mailto:evelynadey@e1603.fsnet.co.uk) or 01728 628428 at Ivy House Barn, Southolt Road, Athelington, IP21 5EL; or Mike Ager on [mike@gn.apc.org](mailto:mike@gn.apc.org) or 01379 678835 at Hidcote Lodge, Mill Road, Redlingfield, IP23 7QU.

**Athelington, Horham & Redlingfield News is printed & published by Evelyn Adey & Mike Ager for the villages of Athelington, Horham, Redlingfield and surrounds. The editors reserve the right to edit or refuse submissions. The views expressed in the magazine are not necessarily those of the editors.**

You can receive your village magazine electronically. Email [mike@gn.apc.org](mailto:mike@gn.apc.org) with your name and address (so you don't get a paper version as well) and when the next issue is published we'll email it to you as a pdf. Or you can find the pdfs of current and previous issues at [www.redlingfield.suffolk.gov.uk](http://www.redlingfield.suffolk.gov.uk)

# More success stories . . .

*Trevor Edwards finds that despite apocalyptic warnings about the effect of our weather Wash Farm's wildlife is still thriving.*

**I**T MAY BE ONLY A temporary respite but the weather has improved and the combines are rolling. In the waiting game of late July and early August, we have had the entertaining diversion of the Olympic Games, though Gold medals may be in short supply in terms of crop yields.

The hare population is one of the winners this year and they show up well on the barley stubbles after the baler has gone. They are always a pleasure to watch. On sensing danger, they initially scuttle with ears bent back, before opening the throttle and going hell-for-leather for a gateway.

However, very close to home, the friendly hare in our garden is living dangerously after scoffing half my runner bean crop earlier in the year.

The hare population can suffer through liver problems if numbers are high and occasional deaths are noted near sheep fencing. Paul, the Occold

gamekeeper, thinks this may be due to an unusual susceptibility to the small electric shock.

WE HAVE HAD A PERSONAL best on the Barn Owl front, our No 1 box producing three fledged owls.

On 26th June, Chris McIntyre, of the Waveney Bird Club, said we were ringing just in time, and he was right, as within a day or two they were wing- stretching outside the box ready to go. The female was absent, roosting elsewhere during the day to avoid the crowded nest, and the heaviest juvenile weighed in at 340 gms, which is more than the adults weigh.

Further proof that the natural world pays scant regard to teenage obesity comes from New Zealand. In the South Island, the Northern royal albatross is one of the grandest birds you can ever set eyes on. It nests on an exposed head, east of Dunedin, and fattens up its offspring to 20lbs ,



nearly double its own weight, before deserting the chick and clearing off out to sea. With wings spanning 10 feet, they are almost too big to flap, so when the chick realises that it has to catch its next meal or go hungry, it has to topple downhill in a strong wind in order to achieve take-off. All clever stuff and well worth a look when you are passing that way.

Second broods of barn owl are possible with a good food supply but on checking on 13th August, the box was empty save for an adult quietly doing some daylight roosting.

A SUNDAY MORNING IN early July, and the whole country is awash. Silverstone is a mudbath, and Andy Murray is busy at Wimbledon only by virtue of the closed roof. Looking over the hedge, you can see the problems of outdoor pig-keeping, and although stockmen are sometimes worried about sows getting sunburn, it is certainly not the case this year!

The four inches of rain which fell in the first two weeks of July means vegetable harvesting is hellish and grain fill will be miserable. But hang on a minute, wise old heads have seen it all before.

The National Trust says the consequences for wildlife are apocalyptic, which is a bit overdramatic (although not for one of our sparrows, which as I write is being eaten on the lawn by a sparrow-hawk.) The rest of this years' crop of young house sparrows are rushing around like a crowd of unruly school children. Half a dozen will swoop into a



**Facing page: Wash Farm's barn owls. Above: Vic Colls and the heron he tried to save. Below: Outdoor sows – what hogwash.**



gooseberry bush and out again chattering ten to the dozen, a new brood playing a game of flying tag.

The wrens in the roof of the workshop also fledged successfully. They built a superb nest in the clutter of the roof space. Most young birds race to leave the nest as soon as possible because the nest is a vulnerable place, a sitting target, but not in the case of these wrens. The danger only begins when they flutter about the workshop floor and the window ledge/ *Continued on page 4*

*Continued from page 3*

Here they would be easy pickings for any farm cat – luckily for them, we haven't got one.

ANDREW ABBOTT NOTES A second brood of swallows from his garage on August 1st so they haven't been hanging about. Drew is a good spotter from the tractor seat as the local wildlife becomes familiar with the repeated spraying and spreading by farm machines.

Birds readily accept the steady progress of machinery across the field without being spooked. Not least a buzzard this summer, a socking great thing in close up, which took flight only when the boom of the sprayer got within about twenty metres.


The odds are improving that we will have buzzards breeding in Caroline's Wood, as we have had repeated

sightings, some at tree level, so fingers crossed.

VIC OF SOUTHOLT DID HIS BEST to save a grey heron, which crash-landed into his garden hedge and became stuck. It was tired and stressed but apparently unharmed and though he carefully released it onto the Common, it failed to survive the night. Maybe it was just a worn out old bird with too many years under its belt. I wish I had weighed it. It was just skin and bone, though maybe all herons are like that.

### HARVEST POSTSCRIPT.

Quizzing the two young chaps who drive the grain trailers, I was fussing over the whereabouts of a list of weighbridge results, only to be told that they were entered into their phones. A sign of the times.

A photograph of a man and a woman, Tom and Alison Abbott, smiling and posing for a photo. They are wearing outdoor gear, including hats and backpacks. Behind them is a large, dark, oval-shaped sign that reads 'THE END COAST TO COAST WALK' and '192 MILES'. The sign also mentions 'ST BEES TO ROBIN HOODS BAY' and 'ALTITUDES'.

**COAST TO COAST WALK:** Tom Abbott, eldest son of Beverley and Patrick Abbott, completed the 192-mile Coast to Coast walk along with his girlfriend Alison in 12 days to raise funds for Redlingfield's St Andrews church. The walk between the Irish Sea at St Bees and the North Sea at Robin Hood's Bay took in the Lake District, Yorkshire Dales and the North York Moors. The money will go towards roof repairs and maintenance. So far more than £300 has been raised. A big thank you to all those who sponsored him in this challenge, and if there are any others who we did not get round to asking feel that they would like to donate after this epic walk to this worthy cause they can do so by dropping donations in at Beckendale, Redlingfield. **Beverley Abbott**



# A140 camera campaign

**R**EDLINGFIELD AND Horham and Athelington councils, along with other local parish and town councils, have started a campaign to have the speed/safety camera on the A140 at Brome turned back on.

That camera was never about catching speeding motorists and fining them, it's always been about saving lives and making the roads safer for everyone. The camera was originally installed in 2004 by Suffolk County Council but last year it was transferred to Suffolk Police. It had been an accident black spot. According to the County's road safety team, who were responsible for the camera up until 2011, six people were killed or seriously injured there in the 4 years before the camera was installed and in the six years following its installation only two serious accidents occurred. That's still too many but a great improvement and we believe having the camera there has saved lives.

In the last few months since it has been turned off traffic on the A140 has started to speed up and it has become much more dangerous for drivers trying to join or leave the A140 at the Brome turn or Devil's Handbasin, both

very busy junctions with a lot of local traffic. I was almost wiped out there recently by a speeding Jag.

We found out in May that the camera had been turned off. When we asked who made the decision, we were told it was a police matter. When we asked why it had been turned off and why no locals had been consulted we were told that the decision, taken in November, was a "confidential" matter that could not be shared with the public. We were also told that it wasn't needed as there had never been any serious accidents at that location and that since 2000 only one accident had occurred and that had been "slight".

We couldn't understand why the police thought no serious accidents had happened when everyone knew that several people had died and others had been seriously injured. It turns out the police had decided to only count the one accident that had happened right beside the camera. So they ignored all the accidents that happened at the junctions for Brome, the Devils Handbasin and Rectory Road and any on the southbound A140.

Let us know what you think at [pc@redlingfield.suffolk.gov.uk](mailto:pc@redlingfield.suffolk.gov.uk).

*Janet Norman-Philips*

■ **SOCIAL EVENING:** A BBQ and social evening is being held at Horham Old School on Sunday September 23 to raise funds for the refurbishment of the Old School. The committee have just agreed to repair the roof as a start to this project. The event will start at about 2.30 pm with traditional music and song in the main hall. The bar will be open and food will be available from 5pm, with BBQ, salads and puddings (of course!) for £5. We will have a firebowl, with music and singing outside as the evening goes on. There may even be an appearance of the Old School rapper side! Come along and help us to repair this lovely building. **Judy Andrews (384207)**

# Three cheers for all of us

**W**HERE WERE YOU ON the night of the London Olympics opening ceremony?

The surprising answer in our house at least, is “glued to the telly!”.

We had the sneak preview helicopter shots into the bowl of the stadium and thought “oh no”, green fields, live sheep and cart horses with live yokels too I shouldn’t wonder, all shipped in from Mummerset. So, with some reluctance and a sense of misgiving we switched on. “We’ll just watch for five minutes” just to see how utterly naff it is going to be and squirm with embarrassment and a sense yet again of shared national shame as Britain is shown up on the international stage – how much better they do these things abroad.

But – hang on – this looks quite interesting. Who are those crowds of people striding forward in massed ranks with upturned buckets slung round their necks, drumming like maniacs and where have those factory chimneys sprung from? This is really quite interesting. Now what on earth is happening? A massive cauldron is pouring a continuous molten stream out into the night to form a huge ring which is now floating up into the darkness to join other identical

flaming rings up there above the stadium and is forming the Olympic symbol (surely health and safety are not going to allow this!).

In amongst all this we’ve got Ken Branagh got up as Isambard Kingdom Brunel (the latter of French extraction but who’s worried?) reciting bits from *The Tempest* by Will Shakespeare. Other bits of Eng. Lit. come in from John Milton and William Blake –

music by Parry of course to go with the Blake and, talking music, we’ve got the Beatles, the Kinks, the Rolling Stones and the Sex Pistols along with Ziggy Stardust.

Then came the massed hospital beds of the Great Ormond Street Hospital, each one complete with young patient, nurse and Mary Poppins – a bit of a

message here, something along the lines of “hey, you lot out there; let’s make sure we keep our NHS in good health!”. And wasn’t Her Majesty convincing as ... er ... Her Majesty!

After the parade of the competing nations’ athletes (11.30 and we’ve only just done Canada!) the Olympic Torch is ferried up the canal by stout Captain Beckham and after much ado all those copper funnels are plugged in and the great cauldron gathers itself together without getting its stems in a twist and we have ignition! All the







work of one Thomas Heatherwick, an unsung engineer of genius and the man who gave us the rolling bridge.

That Danny Boyle certainly knows

how to put on a spectacular! Still I always said it would be worth watching!

You know this could turn me into a boring old patriot – not proud to be English as I have done nothing to achieve it but – perhaps privileged to be a fellow countryman of such talented people and also of the many who were willing to

contribute so much of their own time and energy in order to bring it all off. Three cheers for us!

*Neville Butcher*

■ **SEASONAL FLU JABS:** You are eligible for a jab if you have: chronic respiratory disease; chronic heart disease; chronic kidney disease; chronic liver disease; a weak immune system/immunosuppression; a history of stroke, TIA, Multiple Sclerosis or a disease of the central nervous system; are diabetic; are over 65 years of age or are 65 before to the March 31 2013; are pregnant; in receipt of carer's allowance, or are the main carer of an older or disabled person whose welfare may be at risk if the carer falls ill. Fressingfield and Stradbroke medical centres have walk-in seasonal flu clinics. They are at Fressingfield on Tuesday October 9 & 16 (9am-11am & 2pm-3.30pm) and Friday October 12 & 19 (9am-11am & 4pm-5.30 pm) and at Stradbroke on Monday October 8 & 15 (9am-11am & 4pm-5.30 pm) and Wednesday October 10 & 17 (9am-11am). For more info phone 586456 for Fressingfield or 388313 for Stradbroke or visit [www.fressingfieldmedicalcentre.co.uk](http://www.fressingfieldmedicalcentre.co.uk).

■ **WARM AS TOAST!** Have your heating bills been sky high this year? If so, this may help: The 'Warm as Toast' Greener Homes scheme supported by Suffolk County Council and the District/Borough Councils of Suffolk, offers free home insulation to residents (subject to survey and existing levels of insulation). What is more, for every home that takes up the offer, £15 will be donated to one of the schools/groups that have registered with this scheme (Redlingfield Doorstep Green has registered). By getting your home up to spec with cavity wall insulation and 12 inches (30cm) of loft insulation, your home can be warm as toast next winter. According to figures from the Energy Saving Trust, cavity wall insulation can typically reduce fuel bills by £135 per year, whilst loft insulation can reduce bills by £175. But you need to be quick, this scheme finishes on September 30 – so make sure you don't miss out! For more details go to [www.greensuffolk.org/toast](http://www.greensuffolk.org/toast) or call 0845 6037686.



■ **COFFEE MORNINGS:** Coffee mornings take over from the Coffee Caravan in Redlingfield for the winter and are on the first Wednesday of each month from 10am until noon. They are in the following homes: November 7, Linda Hudson, Woodvale; December 5, Chris and Midge Gibbons, Rush Meadow (with sherry, mince pies and free raffle); January 2, Jan and Neville Butcher, Hill Cottage (with a book swap); February 6, Pat Kelly, Red Mill; March 6, David and Jacqueline Love, Western Barn, Abbots Meadow (with a free raffle). All residents of the village are welcome.

*Jacqueline Love*

■ **COASTAL WALK:** The Rural Coffee Caravan Information Project's Garry Simmonds is walking more than 100 miles along the Suffolk Coast path from Felixstowe to Lowestoft and back again over eight days to raise funds for the Coffee Caravan. He will walk the route from Wednesday September 5 to Wednesday September 12. To donate visit his BT MyDonate page, call him on 07966241823 or talk to a volunteer at the Coffee Caravan.

*Ann Osborn*

■ **ROUNDERS TOURNAMENT:** Suffolk Sport will be hosting its second annual Inter-Villages Rounders Tournament in Sutton (nr Woodbridge) on Sunday September 16. The deadline to enter is September 3 and the cost is £15. Call Henry at Suffolk Sport (01394 444289) or email [henry.tapp@suffolksport.com](mailto:henry.tapp@suffolksport.com).

■ **REDLINGFIELD THEFT:** Between 6pm Thursday August 16 and 10.30am Friday August 17 a green cast-iron postbox was stolen from the end of a driveway in Woodlane Road in Redlingfield.

# The RBL is

**T**HE ROYAL BRITISH Legion was founded in 1921 with the motto “always on active duty” – but what does the RBL do? Can it just be the annual Remembrance service in November around the 11th of the 11th?

Well, there is a lot more to the RBL than the annual appearance around the Cenotaph and village memorials.

The RBL provides financial, social and emotional support to those who have served (for at least seven days in uniform) or are currently serving in the armed forces, their dependants, widows and carers. The needs of serving and ex-service personnel may have changed over the years but the RBL has adapted to them.

At this time of year, when you will hopefully consider contributing to the Poppy Appeal, may I assure you that your donation will support a whole range of “Poppy Support Services” throughout the year, to those who qualify as beneficiaries.

Beneficiaries can be referred to the RBL County Welfare Officer, based in Bury St Edmunds, by friends, relatives, concerned parties or by themselves. He then delegates a referral to a dedicated Welfare Caseworker (there are around 4,000 in the UK). One of these caseworkers is affiliated to the Stradbroke & District Branch, visiting clients from the Mid Suffolk area to Lowestoft.

Welfare officers, sometimes known as “poppy people”, are generally

# much more than poppies

volunteers whose training is updated annually.

This year, the Stradbroke caseworker has been able to secure mobility scooters, stair lifts and electric armchairs for clients. She has also made referrals for occupational therapy assessments and benefit and financial advice. Other clients have gone on to waiting lists for “Welfare Breaks” – designed for those with care needs. Children of service and ex-service personnel have been referred for “Adventure Breaks” and families referred for a “Family Break”.

Other beneficiaries have received grants for children’s clothing, uniforms and bedding. Careers advice and training schemes have been provided for those leaving the forces. Items such as fridges, cookers, microwaves, furniture and carpets have also been provided.

“Poppy Calls” offers handyman services to help with small household repairs and maintenance. The RBL also has seven “Poppy Homes” around the country for short-term and long-term care. Halsey House in Cromer is the nearest to our region. One gentleman was able to secure a place in a south coast home near his family, through Stradbroke’s caseworker. Stradbroke’s caseworker can also complete Disability Facility Grant



**Michael Burton with the ‘mystery lunchtime speaker’ on the branch’s annual summer outing to the Norfolk coast – Bruno Peek MBE. Bruno is a pageant master to the Queen, and recently organised the lighting of more than 4,000 beacons in the UK and Commonwealth for the Jubilee. Lunch and cream teas were organised by Penny Stanford, Jean Stacey, Alex Gwynn and Joyce Cooper.**

forms in preparation for home adaptations. The list of services is endless, the work never dries up.

Each volunteer caseworker carries on tirelessly, confidentially and efficiently, on behalf of all those who have served King, Queen and Country, in order to improve the quality of life of their clients, widows, widowers and dependants. It is also a way to show gratitude to the ex-service personnel for their sacrifice.

Do you need help? Do you know someone who needs help? If so make a referral to the Suffolk RBL County Welfare Officer on 01284 725833. We are here to serve. All clients are treated with the utmost respect.  
**Michael Burton, Stradbroke & District RBL Branch Chairman**

# Mud and motor racing...

*John Kirkum tells of a more than eventful trip with his son Matthew to the British Formula 1 Grand Prix at Silverstone*

**O**N JULY 1 WE EXCITEDLY headed off for three days of camping, father and son bonding and hi-octane entertainment on our first trip to the British Formula 1 Grand Prix at Silverstone.

Suspecting the parking areas were likely to be a bit rough I decided to take my wife Kate's car; well I wasn't going to get my car covered in mud.

The journey was trouble free and when we arrived at the Northamptonshire circuit's "official" campsite we were directed to the park away from the main camping areas. Continuous rain leading up to the weekend had left the site very boggy and no cars were allowed in the main camping area. So we had to carry all our equipment from the car park to our chosen spot.

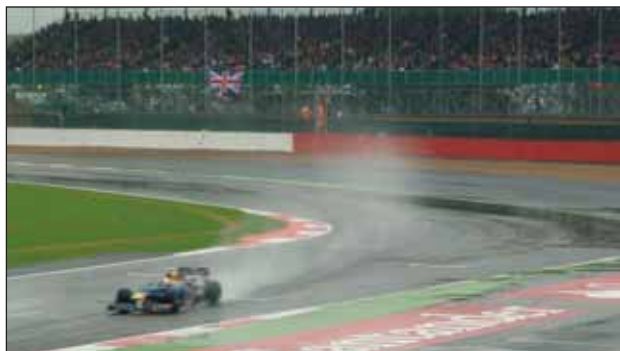
People continued to arrive as dusk fell and tents were popping up all around us as we settled down for our first night under canvas. It was

surprisingly easy to sleep while the site rocked to the music pumping out of the big top and generators hummed all around. That night the rain came, it was torrential, with more than 40mm (more than one-and-a-half inches) falling in 12 hours. But at least we remained dry.

OUR FIRST DAY STARTED EARLY, we were in the circuit just after 7.30am. The rain from the previous night continued to fall heavily throughout the day which meant that some of the practice was interrupted.

On the way in we watched as cars struggled to park on grass areas which were starting to cut up badly. Despite the weather we were able to enjoy the views from around the circuit. We walked its entire length assessing the pros and cons of every vantage point finally deciding where we wanted to be for the rest of the weekend.

Back at the campsite at the end of the day people were still arriving. The car park was beginning to resemble a WW1 battlefield and there was much talk about cars



***The spray flies at the British Grand Prix, left.***

***John wades into the Silverstone mud and time for tow, facing page.***



having to be towed off the field after Sunday's race.

It was beginning to look as though no-one was going to get home very quickly. If that wasn't bad enough I discovered that an electrical fault on our car had left us with a flat battery. At this point I thought I was destined to stay forever!!!

**SATURDAY WAS QUALIFYING**, the day the drivers battle it out to decide who starts where on the grid in Sunday's race. There had been more rain overnight and the official word from Silverstone was not to come today unless you had a pass for the permanent parking areas.

We took our folding chairs and provisions for the day and set-up camp on the bend at Luffield which gave us a great view of the cars as they slowed into two sharp turns before accelerating away in front of us.

More rain eventually interrupted the action. We just sheltered under an

umbrella, our wellington boots slowly filling with water until the skies cleared.

At the end of the day the fans' favourite, Lewis Hamilton finished a disappointing eighth on the grid while teammate Jenson Button was eliminated in the first round. It didn't look like Sunday was going to be a good day for the British drivers.

Returning to the campsite that night the sun was shining but the scene at the car park had become worse. It was clear that everyone would be having problems getting home, and there was the small detail of our flat battery. It was at this point that I had the inspired idea to join the AA.

**SUNDAY, A VERY, VERY EARLY** start! The queues were already long when we got to the gates at 5.30am. By 6am we were inside, had secured our position and started the long wait. The good news was that today's forecast said it would remain dry.

We passed the time by playing spot the fan with a day-pass. Clean wellies and trainers were a bit of a giveaway!

We knew that unless you had trench foot and were covered in mud, you weren't a real race fan. At one the sun burst through the clouds and the 2012 British Formula 1 Grand Prix started.

*Continued on page 12*



*Continued from page 11*

We cheered every time the British drivers went past, even though they were getting slower each time. We stood and clapped when, on the last lap Australian Mark Webber overtook Fernando Alonso right in front of us to win the race. And we waved our Union flags when the drivers did a lap of honour at the end of the race.

WHEN WE ARRIVED BACK AT the car the battery was so flat that we could only open the driver's door, the central locking was not working and all the other doors, including the boot were stuck fast.

All our camping equipment had to be packed up and carried by hand to the car park navigating the fields of slurry. It all then had to be loaded through the driver's door into the car.

With the car finally packed, my blood pressure on amber alert, dozens of people stranded and looking for a tow and even more cars stuck in traffic trying to get out of the site there was no doubt in my mind we were not going to get home quickly.

It was then that I spied the friendly AA patrol who, not only got the car going in a matter of minutes but offered to tow me off the site.

Unfortunately the mud was too much even for them and eventually two Land Rovers with huge tyres had to combine their efforts to drag me clear.

With mud flying over the windscreen and the car encased in mud we were dragged blind through the quagmire, finally arriving at a different exit and therefore missing the traffic queuing to get out off the campsite altogether. We left the campsite and were out and on the open road in less than half an hour.

We caused a stir driving along covered in mud until we could get to a garage to wash the car down but we had survived and lived to tell the tale. I had feared that we might have spent Sunday night in the car but were on our way home quicker than I ever imagined.

Going to the Grand Prix was about so much more than just the main race. I have to say that the people we met were all great and the experience was one that for many reasons we won't forget in a hurry. Two weeks later and Matthew was still wearing his campsite wristband as a badge of honour to say, I was there.

Would we do it again ? ... Never say never!!!

*PS. Thanks to Cowhams for steam cleaning the car so quickly and Kate for being so understanding!*

■ **PLANNING: To be decided** – Plan to install a 5kW wind turbine (14.97m to hub, 5.5m diameter blades), **Mill Farm, Mill Road, Redlingfield**; plan to increase number of events being held in a marquee from five to nine. **Athelington Hall, Horham Road, Athelington. Granted** – plan to install a 5kw wind turbine at **Hill Cottage, Worlingworth Road, Horham**; plan to build one-and-a-half-storey detached dwelling with single garage, **The Old Eight Bells, The Street, Horham**.

■ **TOUR OF BRITAIN:** Tour de France and Olympic champion Bradley Wiggins will be racing in Suffolk in September. He is competing in next month's Tour of Britain – the first stage of which starts in Ipswich on September 9.



**Saturday & Sunday, September 1 & 2**

**East Suffolk Country Show:**

Helmingham Hall. A Family Country Show. Sunday, Companion Dog Show in aid of Marie Curie Cancer Care.

Admission £7, conc £6, children 5-16 £3, family ticket £18 (2+2); under 5s free.

**Sunday, September 2**

**Framlingham 10K and Fun Run:** 11.am for 10k & 11.05am for Fun Run. Details at <http://framflyers.org.uk/>.

**On Your Bike:** Cycling event with choice of 4 distances – 75, 50, 15 & 3 miles, to raise funds for St Elizabeth Hospice. Ipswich. Starts Framlingham College. Info at [www.stelizabethhospice.org.uk](http://www.stelizabethhospice.org.uk).

**Wednesday, September 5**

**Redlingfield Ladies Lunch:** De La Pole Arms, Wingfield. Linda 678984.

**Thursday-Sunday, September 6 -9**

**Heritage Open Days:** Annual event gives the public access to historic buildings. Info Mid Suffolk Tourist Information Centre or [www.heritageopendays.org.uk](http://www.heritageopendays.org.uk)

**Friday, September 7**

**Ray Hubbard & Friends:** Stradbroke Community Centre, 7.30pm, in support of church. Info 384642.

**Dove Players Murder Mystery Evening:** Eye Bowls Club, 7pm-for 7.30pm, inc cheese & wine. Tickets £10, Chrissie Beamish, 870213.

**Saturday, September 8**

**Old-time Machinery Working Day:** Horham. See page 1.

**Suffolk Historic Churches Trust**

**Sponsored Bike Ride:** 9am-5pm.

**Annual Digger Turnbull Quiz:** Funds for Worlingworth Community Centre. Pat (628414) or Val (628068).

**200th Mission Dance:** Red Feather Club.

**Friday, September 14**

**Evening of Clairvoyance:** Eye Community Centre, 7.30pm (doors 7pm) with Fiona Nichols. Proceeds to Opportunity Group, Eye. Tickets £8. Margaret Gooderham 870035 or Opportunity Group 870975.

**Saturday, September 15**

**Pub on the Green:** Redlingfield Doorstep Green, 6pm-midnight.

**Fram Horticultural Soc Autumn Show:**

Framlingham United Free Church Hall 9.30am-11.30am.

**Saturday & Sunday, September 15 & 16**

**Harvest Home & Local Food Fair:** Suffolk Owl Sanctuary.

**Sunday, September 16**

**Plant Heritage Autumn Plant Fair:**

Helmingham Hall. Entry to plant sale £6 including admission to Helmingham Hall Gardens.

**Thorndon Leek Show:** The Black Horse Pub and adjacent meadow.

**The 2nd Annual Belles on Bikes Charity**

**Cycle Event:** 17-mile ladies-only charity bike ride starts Castle Meadow, Framlingham. £7 early entry, £5 for over 60 or under 16 or £10 on the day, £7 for over 60 or under 16, 10am. Info Rupert 07793 815533, [info@bellesonbikes.co.uk](mailto:info@bellesonbikes.co.uk) or [www.bellesonbikes.co.uk](http://www.bellesonbikes.co.uk).

**Tuesday, September 18**

**Coffee Caravan:** Redlingfield village centre, 2pm-4pm.

**Wednesday, September 20**

**Folk music gig:** Steve Knightley (a show of hands) at Wingfield Barns. Doors 6.30pm, event 7.30pm. Tickets £15. Booking essential!

**Saturday & Sunday, September 22 & 23**

**Debenham Scarecrow Festival:** 12-4pm

**Sunday, September 23**

**Steam Day:** Mid-Suffolk Light Railway, adult £5, conc £4, child £2.50, family (2+2) £12.50.

**Social evening:** Horham Old School. See page 5.

**Tuesday-Saturday, September 25-29**

**8th Fressingfield Music Festival:** Info [www.fressingfieldmusic.com](http://www.fressingfieldmusic.com) or 586459 (details in Summer magazine).

**Wednesday, September 26**

**WEA course on East Anglia & the settlement of America:** 01728 724746.

### Thursday, September 27

**Cinema In Stradbroke:** Best Exotic Marigold Hotel. Doors & bar open 7pm, film 7.30pm. Tickets on door £5.50. Ices sold in interval (388629).

**Eyeswrite & Debenham Players present The Piano Plays:** Wingfield Barns. A collection of short plays by local writers with a piano playing a key part. 7.30pm, £8 (conc £6). Info 07840 570343.

### Friday, September 28

**Macmillan Coffee Morning.**

**Eyeswrite & Debenham Players present The Piano Plays:** Fisher Theatre Bungay. Box office 01986 897130 or [boxoffice@fishertheatre.org](mailto:boxoffice@fishertheatre.org). See above.

### Saturday, September 29

**1st Eye Scout Group Annual Duck Race:** The Pennings Eye.

**Redlingfield Quiz Night:** Horham Old School & Social Club. Quiz night in aid of St Andrew's Church Redlingfield. Raffle, refreshments & bar. Tickets Chris Stanford (01728 628474). Teams of up to four. 7pm for 7.30pm.

**Eyeswrite & Debenham Players present The Piano Plays:** Crowfield Village Hall. Box office 873536 or [joal@aagh.fsnet.co.uk](mailto:joal@aagh.fsnet.co.uk). See above.

### Sunday, September 30

**Open Day:** 10am-4pm, Red Feather Club, Horham. With vintage softball game. The 95th BGHA 'Wallopers' vs 'Snowdrops'.

### Sunday, September 30

**Historic Machinery:** Mid-Suffolk Light Railway, steam train rides & historic machinery, 11am to 5pm, adult £6, child £3, conc £4.50, family (2+2) £15.

### Wednesday, October 3

**Folk music:** Rosie Doonan at Wingfield Darns. Doors 6.30pm, event 7.30pm. Tickets £10. Booking recommended.

### Friday, October 5

**Stradbroke Harvest Supper & Entertainment:** All funds raised in support of church. Contact: 01379 384642

### Friday-Sunday, October 5-7

**Framlingham Autumn Arts Festival**

**Weekend:** Friday, Literary Evening with Sue Gee in the St John's Westbury Centre at 7.30pm, £8. Saturday, 'Something Happened' in St Michael's Rooms at 7.30pm, an evening of songs of lust, love and loathing, £10. Sunday, Ancestral Voices at 6.30pm in St Michael's Church, history & music, 'Rural Royalty in East Anglia', £10 ([www.artsframlingham.org](http://www.artsframlingham.org)).

### Sunday, October 7

**Harvest Lunch:** Horham & Athelington Community Centre, Angela (384625).

### Saturday, October 13

**General knowledge quiz:** Red Feather Club, 7.30pm. Contact John Kirkum on 384559 to book team tables of up to four people (£5 per person). Food included. The bar and museum will be open.

**Rocktober:** Jazz, rock, soul & folk, noon-10pm, Debenham High School. Adults £5, child £2.50. Deb 860858/861211 for tickets.

### Tuesday, October 16

**Coffee Caravan:** Redlingfield village centre, 10am-noon.

**Redlingfield Village committee meeting.**

### Wednesday, October 17

**Film night:** Red Feather Club, 7.30pm. Admission on the door £3 for 95th BGHA members, £4 for non-members. Bar and museum will be open. A 90-minute colour WW2 film taken by William E. "Doc" Furniss of the men and B-17s of the 92nd Bomb Group of RAF Podington.

### Thursday, October 25

**Cinema In Stradbroke:** Title to be announced.

### Saturday, October 27

**Cabaret Evening:** Thorndon Village Hall.

### Sunday, October 28

**Hallow'een Hoot:** Pumpkin decorating. Prize for best fancy dress costume. Safari Trail and Spooky Quiz. Meet the tarantula. Flying display. Suffolk Owl Sanctuary.

**Sunday, October 28**

**Corn and Coal: Mid-Suffolk Light Railway**, steam train rides with agricultural and transportation demonstrations and re-enactments, 11am to 5pm, adult £6, child £3, conc £4.50, family (2+2) £15.

**Sunday, November 4**

**Corn and Coal: Mid-Suffolk Light Railway**, steam train rides with agricultural and transportation demonstrations and re-enactments, 11am to 5pm, adult £6, child £3, conc £4.50, family (2+2) £15.

**Wednesday, November 7**

**Redlingfield Winter Coffee Morning:** Hosted by Linda Hudson, Woodvale.

**Saturday, November 10**

**Fireworks and Bonfire Night:** Horham & Athelington Community Centre, Angela (384625).

**Sunday, November 12**

**Remembrance Sunday at Suffolk Owl Sanctuary:** Free admission for serving troops and veterans.

**Saturday, December 1**

**Friends of Debenham High School Christmas Market.**

**Saturday & Sunday, December 1 & 2**

**Christmas With The Owls:** Suffolk Owl Sanctuary.

**Friday, December 7**

**Christmas Dinner Dance:** Horham & Athelington CC, Angela (384625).

Event information: **Helmingham Hall**, 01473 890799, events@helmingham.com, www.helmingham.com; **Mid-Suffolk Light Railway**, Brockford Station, Wetheringsett nr Stowmarket, Suffolk Suffolk IP14 5PW, www.mslr.org.uk, general enquiries Keith Froom 01449 672670 or keith.froom@ftinternet.co.uk; **Mid Suffolk Showground**, Stonham Barns, 01449 711111 www.midsuffolkshowground.co.uk; **Museum of East Anglian Life**, Stowmarket, 01449 612229, enquiries@eastanglianlife.org.uk, www.eastanglianlife.org.uk; **Redlingfield**, 678835, pc@redlingfield.suffolk.gov.uk, www.redlingfield.suffolk.gov.uk; **Suffolk Owl Sanctuary**, Stonham Barns, 08456 807897, info@owl-help.org.uk, www.owl-help.org.uk; **Wingfield Barns**, 384505, enquiries@wingfieldbarns.com, www.wingfieldbarns.com (Chick Flicks, 8pm, £10 or four for £30 pre-booked).

**MONDAYS: Ballroom dancing:** St Edmund's Hall, Hoxne, 7.30pm-9.30pm (for adults). Sandra Hartley, 01728 723887.

**TUESDAYS: Improver line dance class:** Coronation Hall, Wilby. 9.30am-11.30am. Rose, 870346. **Bingo:** Thorndon Village Hall, 7.30pm every other Tues. 678178.

**WEDNESDAYS: Redlingfield & Occold WI**, 1st Wed of the month at, 7.45pm, in Occold Village Hall. **Hoxon Hundred:** Summer dance-outs at local pubs. Winter practices. Ron Ross, 643563. Eye Country Market, every Wed 10am-11am, Eye Town Hall (closed Jan).

**THURSDAYS: Keep fit classes:** 8pm, Worlingworth Village Hall, all abilities, lose weight, tone up – £4 per session. Call Sarah on 07884 186849 for details. **Hoxne Garden Club:** 3rd Thurs St Edmund's Hall, Hoxne, 7.30pm

**FRIDAYS: Bingo:** Stradbroke Community Centre, Wilby Road, 2nd Fri monthly. 7.30pm. Mary Ellis, 384642.

**FRIDAYS/SUNDAYS: Traditional music:** Worlingworth Swan, 2nd Fri evening of month in spring & summer. Sun lunch in autumn & winter.

**SATURDAYS: Occold Market & Car Boot:** Occold Village and Village Hall, 9.30am-noon, last Sat of the month from March to November.

**SUNDAYS: Open days:** Red Feather/95th Bomb Group Heritage Association & 95th BG Hospital Museum last Sun of month May-October inclusive,

# Fond farewell to our colourful

**T**HIRTY YEARS AGO, AFTER the retirement of Rev Dobson we were looking for a new rector and hoping for someone who would encourage young families into church. On the scene arrived a brightly-clad young man from Essex, David Streeter, accompanied by wife and son. His induction was in Stradbroke church followed by tea at the High School. It was a happy day with much laughter and sharing of stories with members of the congregation from his previous parish.

Horham had a fairly young

congregation in 1980 and everyone set about fund raising for the restoration of the church tower; this culminated in

December with a Parson's Punch and Pie party in the Old School with Turkey raffle. The tower was completed in 1984.

As the years progressed David's clothes got brighter and his ability to win over the young became more daring and sometimes more dangerous; he moved from swimming through roller skating to abseiling down the church tower and ultimately bungee jumping. He has been seen regularly the TV show It'll Be Alright On The Night.

His efforts have been rewarded as many youngsters have been christened and married in church, many who had never been in church before. As well as all this he has been a tireless visitor to the sick, been to numerous village events, involved

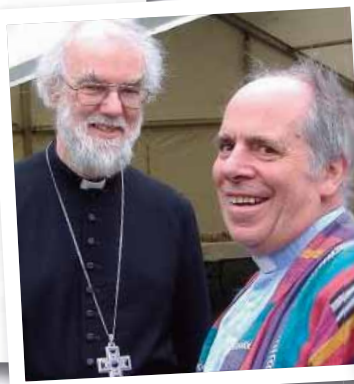
## ■ PROPOSED CHANGES FOLLOWING DAVID'S RETIREMENT:

The Hoxne Benefice will be: Hoxne, Denham, Horham, Athelington, Redlingfield, Syleham and Wingfield with its own new priest. Eleanor Goodison, at present training to be a priest, will, if all goes well, assist the new vicar. The Fressingfield Benefice will be: Fressingfield, Mendham, Metfield, Weybread, Withersdale and Stradbroke, with the Rev Susan Loxton as vicar assisted by the Rev Peter Schwier.

**■ FAREWELL LUNCH:** There will be a farewell lunch for David and Margaret at Stradbroke Community Centre on Wednesday, September 12 (noon for 12.30pm). Tickets, £6 adults, £4 children, from Jennifer Chetwynd (384069). Book before September 6.

**■ FAREWELL GIFT:** As a token of gratitude a parchment commemorating David's tenure will be passed around Redlingfield for people to sign and/or write messages of goodwill. If you miss the opportunity to sign or make a donation contact Lesley or Tony (t.freitas1@gmail.com or lesleyann2011@hotmail.com).

**■ FAREWELL SERVICES:** For David's final services see page 23.



Dear Friends  
This is "See  
moving any  
for me after  
continue he  
seeing man  
thanks and  
have achiev  
future that v  
splendid pla  
W

# l village vicar

with combined services with the Baptist church and helped bereaved families with care and compassion.

He liaised with veterans of the 95th and the PCC for the re-hanging of Horham's eight bells – they were dedicated in '92. This was a tremendous occasion, The village fed and entertained, maybe not 5,000 but a good 500. Following this success Horham was chosen as the venue for the millennium yew tree distribution to sites in Suffolk. At an outdoor event in pouring rain several hundred visitors were welcomed by the bishop, David Bellamy and others.

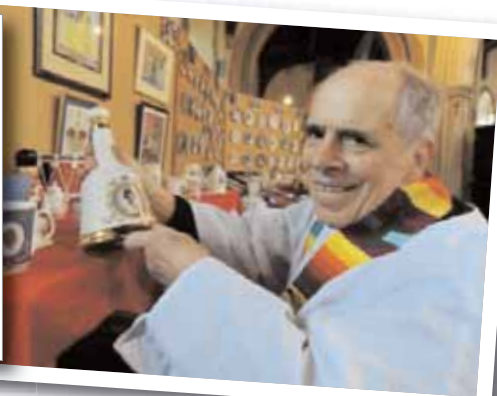
Well, we fear we have had the best 30 years of his life and have much to be thankful for, but he can be exasperating! (Perhaps we should check with wife Margaret and son Daniel, just in case it's us). As he leaves us with his bucket of flowers, home-made cake, jar of marmalade, bottle of home-made ginger beer en route to shows all over the country, what more can we say except thank you.

God Bless, Good Luck and Happy Retirement.  
*Horham PCC*

is,  
e you later!"as much as Goodbye, as we are not  
further away from you, but all will be different  
r Sunday October 21st, though Margaret will  
er activities in Horham. We look forward to  
y of you in September and October to share  
appreciation, and many memories of what we  
ved together, and to make a commitment for the  
will see the three villages continue to be the  
aces we have loved and known.  
ith all good wishes, David and Margaret Streeter



**Above, David and Margaret cut the cake at David's 70th birthday party. Below, David celebrates the Queen's Diamond Jubilee (picture by kind permission of the Diss Express newspaper [www.dissexpress.co.uk](http://www.dissexpress.co.uk)). He is also pictured with Archbishop of Canterbury, Dr Rowan Williams, at St Edmundsbury Cathedral and celebrating St George's Day (pictures All saints Website).**





# Words really do matter

**M**ANY YEARS AGO I lived in a house that backed on to a village sports field, Saturday gardening was enlivened by usually happy voices but some of their language was truly dreadful.

One year I was asked to open the sports club fete, I think I said all the usual platitudes but also mentioned the unpleasant swearing. I felt sure I had put this most carefully and gently but the following week I was told the club was very angry with what they thought of as my unwarranted insult.

I can't say I cared because at that time there was a lot of concern about serious hooliganism at some professional football games and I see no reason to swear during a game. I thought maybe it was inevitable in a testosterone-fuelled effort to win but schools and many clubs control it so it is possible. (In fact the sports club has now changed greatly.)

I was reminded of this by the comments made by Kofi Annan when he resigned from his job as peace negotiator in Syria. He said that peace would be helped if the Syrians and also world leaders would stop insulting each other. I have often thought the way politicians insult and dismiss each other is extremely unhelpful as well as unpleasant. Many commentators seemed surprised that the volunteers at the Olympics were so friendly; maybe the people in politics don't know that most of us are quite nice to each other most of the time.

Kofi Annan also wanted to involve Iran in the talks but Western powers refuse to allow Iran to play a useful part. Why? While Iran is isolated and vilified and while sanctions hurt the ordinary people tension can only get worse. It's as if a village gossip picks on a person and everyone goes along making them an outsider regardless of evidence. Derogatory words get flung out and even though they are retracted they leave a flavour of suspicion.

I've no doubt that there are some aggressive people in Iran, there are in every country, but I'm certain that most Iranians are just the same as the rest of us. The drip, drip of negative words can lead to real conflagration and are very dangerous.

Other unhelpful words are politicians' spin, half truths and sometimes downright lies. We know the power of advertising, companies spend millions on it, and we are becoming much more aware of political speak. The result is to turn away and mistrust them all. So unlike watching an Olympic race, there, the winner is the winner and there is an incredible truth, purity and beauty about it. Watching Mo Farah will stay with me forever.

The end of the sports club story came a week later in church when I was grateful that Rev Hartley's sermon pointed out the aggressiveness of bad language. He had fought in the North Africa campaign and knew a thing or two about fighting.

*Evelyn Adey*



**REDLINGFIELD VILLAGE MEETING:**

**POLICE PRIORITY SETTING MEETING:** The July Mid Suffolk North Safer Neighbourhood Team priority setting meeting at Horham & Athelington Community Centre, attended by the police, public and parish councillors, decided that the priorities for policing the area were to continue to be speeding in villages and thefts from sheds, garages and outbuildings etc.

**EVENTS:** Our Pub on the Green on Saturday September 15 is due to be the last of the year but we may hold a further event in October. Watch out for details.

**THANK YOUS:** Many thanks to all of those who made the village BBQ such a success, donating raffle prizes, selling tickets, setting up, manning the BBQs, serving the food, running the behind the bar, running the bottle stall and selling raffle tickets. And many thanks for people's continued efforts in keeping the Doorstep Green and village looking good. Particular thanks to those who continue to support our Pub on the Green.

**Mike Ager, committee chairman**

**([pc@redlingfield.suffolk.gov.uk](mailto:pc@redlingfield.suffolk.gov.uk) or 678835, [www.redlingfield.suffolk.gov.uk](http://www.redlingfield.suffolk.gov.uk))**

**■ STUDENTS – IT'S THAT TIME OF YEAR AGAIN!** September is the month when students return to school and college and are thinking about what books and equipment they might need during the coming year. There may be things that you need but you can't quite afford. The Eye Grammar School Fund is here to help! It is a Trust set up to provide grants of money to young people and educational organisations in the locality. Grants are not large – usually up to £200 or so – but they may make all the difference. The Trustees meet quarterly, in October, January, April and July to consider applications and award grants. Applications must come from students or organisations serving people under 25 who live in the parishes of Eye, Athelington, Bedfield or Horham. The special grants are intended to help with expenses not provided for by the Local Education Authority. These might include the costs of purchasing books, clothing, tools and instruments, course fees for educational purposes, or preparation to enter a trade or occupation. If you would like an application form or to discuss matters further, please contact the Clerk to the Trustees on 01379 870170 or email [sara.muldoon@tiscali.co.uk](mailto:sara.muldoon@tiscali.co.uk)

**■ RED FEATHER CLUB 2013:** The 95th Bomb Group Heritage Association is getting ahead of the game with a list of events for 2013: on Sunday February 17 you can learn to Foxtrot with Sasza Zargowski; on Saturday March 23 there's a Swing Dance; on Saturday May 18 & Sunday 19 there's a 1940s' Weekend with a Strictly 40s dance on Saturday and re-enactments on Sunday; on Sunday June 23, there's a members' only day; on Saturday September 28 the annual 200th Mission Dance; and on Sunday September 29, a vintage softball game.

**Andy Garner**

**■ RECYCLING CENTRE:** Brome Waste Recycling Centre seems to be back in business. The site will be open weekdays, except Wednesdays, and on Saturdays from 9am until 5pm. It will open on Sundays from 10am until 4pm. Recyclable materials will be accepted for free, except green waste, wood and hard core, for which there is a charge of £6 per car. The £6 charge also applies to landfill waste.

# Garage & shed security...

THIS SUMMER HAS SEEN MANY sheds and garages across the county broken into or entered.

People are out in their gardens mowing lawns, using tools and moving around things such as bikes, fishing equipment and golf clubs.

But this sort of activity attracts the attention of those with more sinister intentions.

Many of these crimes have seen criminals almost literally invited into buildings with doors left unlocked.

Please remember to lock doors if you are not going to be near your garage or shed, as a lot of these thefts have happened during the day.

Your garden, as well as your house, has valuable possessions that thieves would love to steal. It also has equipment that could help them break into your house.

Most burglars are lazy. They look for easy ways of getting into a house or garden. By taking a few simple precautions you can make your house and garden more secure.

What you can do ...

- Put away all tools and equipment and ensure that all outside sheds and store cupboards are securely locked when not in use.
- Bring the tools inside if you do not have a garden shed or outbuilding.
- Use plant protection – such as thorny shrubs.
- If you have a burglar alarm, why not extend it to cover outbuildings and sheds?
- Photograph valuable garden plants or ornaments.
- Mark your property with your postcode. This makes stolen property easier to trace and it can be positively identified as yours.
- Check that your household insurance policy covers theft from your garden and outbuildings.
- Bicycles with locks can be chained together.
- Eye Police station is currently selling Padlock Alarms, Property Marking UV Pens and Shed Alarms to help protect your possessions.



*Mid Suffolk North Safer Neighbourhood Team,  
PCSO 3172 Steven Long & PC 878 Jacqui  
Thomas, Eye Police Station, Victoria Hill, Eye,  
Suffolk, IP23 7HJ. Phone 101, email  
Midsuffnorth.snt@suffolk.pnn.police.uk*

**HOXON HUNDRED:** Hoxon Hundred Morris Dancers are looking for new members. They practise every Wednesday during winter, beginning on September 12, in St Edmunds Hall, Hoxne, from 7.30pm. Musicians are also warmly welcomed. During the summer they dance out at pubs, fetes and the occasional folk festival. Go along for a taster. If you wish to speak with someone contact Bunny Nash, the group's squire (650551) or email Jan on janbud@live.co.uk.

## DR DAN POULTER, YOUR LOCAL MP, REPORTS BACK



LIKE MANY RESIDENTS, I was distressed to hear of the recent temporary closure of Stradbroke Post Office. Local village services such as the post office, pub and store form the lifeblood of our rural communities, often going above and beyond in supporting and bringing residents together.

They are particularly important for vulnerable elderly residents or those without their own cars, who would find it difficult to travel to neighbouring villages to access key everyday services, advice and support that post offices provide.

That is why I have taken up this issue with Post Office Ltd and have been working closely with Stradbroke Parish Council, to ensure that the post office in Stradbroke is retained or replaced for villagers as soon as possible.

I am confident an alternative site will be found for a post office, and will be monitoring the situation closely in the weeks ahead, so that residents can again have access to the vital services they require from their local post office.

THE GOVERNMENT RECENTLY SET OUT plans to radically reform the way we support and care for older people. For too long, our frail older people have suffered when attempting to navigate our unwieldy social care system and I am pleased that the Government is getting to grips with reforming social care so that frail elderly people are treated with the respect and dignity they deserve.

I have written before about how improving health and social care services to provide dignity in care for

older people is the biggest human and financial challenge facing Suffolk. Not only are people living longer, but they do so with multiple medical conditions, such as heart disease, dementia and diabetes. Meeting this challenge will require our NHS and social care system to move from being a crisis management service to becoming more joined-up and community focused, with emphasis on prevention rather than cure.

Suffolk is leading the way in caring for our elderly, and I have seen some excellent schemes such as the Wickham Market Community Training Project, which trains volunteers to provide short-term respite for local family carers when they need a break from their care duties.

The measures announced by the Government place individuals at the heart of the care and support system and prioritise better joined-up care between GPs, social services and the NHS. As well as providing for better coordinated care, the Government's social care reforms will ensure that our hardworking carers are given the support they need to balance their caring responsibilities with their own lives.

Our frail older people deserve to be properly looked after under a health and social care system that doesn't just react to crises, but prevents them from happening in the first place by delivering community-focused care. I am glad that the Government has recognised this and is taking the action needed to fix our broken social care system so that it better supports our older people.

**Dr Dan Poulter, MP - for more information see [www.danielpoulter.com](http://www.danielpoulter.com)**

## **YOUR COUNTY COUNCILLOR**



*IN RURAL AREAS, SUCH AS ours, the provision of transport for those without access to their own means of transport is one of the duties of the county council.*

*It is difficult for commercial operators to provide services and over the past 20 years we have seen such bus firms as Eastern Counties retreat into providing town and some inter-town services. Their place has been taken by more efficient operators such as Simonds and smaller firms such as Fairline. As well as providing revenue support for some local operators Suffolk County Council is behind Demand Responsive Services in the area.*

*I am sure we all welcome (at long last) the reopening of Hartismere Hospital. But many of us have to go to the hospitals at Ipswich, Norwich, and Bury St Edmunds and even further afield for treatment. In the past hospitals made arrangements for the transport of patients who did not have their own means of transport if coming in for treatment over long distances. However, the NHS has been cutting back hospital transport for patients.*

*I have recently been informed about residents who need vital treatment at hospitals but are unable to take it up because they cannot get to hospital. We have taken this matter up with Transport Minister Norman Baker.*

*In the meantime if any reader is experiencing difficulty in getting to hospital for treatment, or know of people who are facing such difficulties, please let me know.*

**Guy McGregor, County Councillor –  
Hoxne & Eye Division**

## **YOUR DISTRICT COUNCILLOR**



*NOW THE REORGANISATION OF is almost complete at Mid Suffolk and Babergh District Councils we are about to start a sort of multi-layered parish plan.*

*In the north of the district we have agreed to hold one combined event on October 4 (2-6pm and 6-9pm) at a venue to be decided.*

*At this you will have the opportunity of talking to several of the lead officers about your hopes for the future of the place you live in and to voice any concerns. I do hope you will attend one of the sessions, there are so many opportunities for us in funding, growth and development and we owe it to the future life of our villages.*

*The end of August saw the Olympic flame come to Needham Market on the way to the Paralympics. Mid Suffolk played a major part in the celebrations at Needham Lake.*

*I hope some of you have had the opportunity to visit Hartismere Health and Care Centre (Hospital) for routine and non urgent treatments, and I hope you find the new facilities easy to use. I will be having a meeting with NHS Suffolk next month and hope to have more news on the additional services that will be provided there.*

*Plans for a larger care home on the site of Hartismere Hospital are under way in the private sector but NHS beds will also be available.*

*The best news comes last. The Recycling Centre at Brome is at last open again under local management. I am sure you will find a welcome from Kevin and Kim who will help you sort your recyclables to save you money. Local councillors and SCC have put a great deal of work into saving and regenerating this facility, please do use it.*

**Elizabeth Gibson-Harries,  
District Councillor – Hoxne Ward**

**C of E Services:** All Saints, Stradbroke; St Andrew, Redlingfield; St Peter, Athelington; St Mary, Horham. Holy Communion unless stated. After Sunday, 21st October, please direct all Church enquiries to: Daphne Harvey, Horham (384216); Evelyn Adey, Athelington (01728 628428) Hazel Abbott, Redlingfield (678217). Check times on notice boards. November services may change so check nearer the time. (Holy Communion unless otherwise stated):

**Sept 2 Athelington**, Benefice Communion, 10am.

**9 Horham**, 9am; **Redlingfield**, 10am.

**16 Horham**, 9am; **Athelington**, 10am.

**23 Redlingfield**, Morning Prayer, 10am; **Horham**, Morning Prayer, 11.15am.

**30 Horham**, 9am; **Stradbroke**, 10am.

**Oct 7** Harvest Festivals: **Horham**, 11.15am; **Redlingfield**, 6.30pm.

**14 Horham**, 9am; **Athelington**, 10am; **Stradbroke**, Harvest Festival, 6.30pm.

**21 Redlingfield**, 10am; **Athelington**, Harvest Festival, 6.30pm.

**28 Horham**, Morning Prayer, 11.15am.

**Nov 4 Horham**, 9am.

**11** Remembrance Services, **Redlingfield**, 10am; **Horham**, 3pm.

**18** Group Holy Communion, **Athelington**, 10am.

**25** Holy Communion, **Redlingfield** for St Andrew's Day, 10am;  
Morning Prayer, **Horham**, 11.15am.

**Dec 2** Advent Carol Service, **Athelington**, 4.30pm.

● SHCT BIKE RIDE: Saturday September 8, will welcome cyclists to our churches for the annual Suffolk Historic Churches Trust bike ride from 9am to 5pm. Will you join them in purposeful exercise? Sponsorship forms available from Daphne Harvey, Horham (384216), Evelyn Adey, Athelington (01728628428) & Joan Abbott, Redlingfield (678736).

● HARVEST FESTIVALS are at Horham on Sunday October 7, at 11.15 am, followed by lunch in the Community Centre (84625 for tickets) & at Redlingfield Church at 6.30pm that day (followed by light refreshments in the church).

● THE ADVENT CAROL SERVICE is at Athelington at 4.30 pm on Sunday December 2, with seasonal refreshments in the Church.

● THANK YOU to all who contributed to the Christian Aid Week collection which raised £275.89 in Horham and £18 in Athelington (+£38.33 Gift Aid). There was no stall at the Bygones Rally, but the sale of plants and preserves brought in £100.

● BAPTISM at Horham, July 22, Maisie Victoria June Raistrick and Logan Noel John Tricker, great-grandchildren of John and Vicky Bloomfield.

● WEDDINGS at Horham, June 2, Eammon Andrews and Judy Castleton; July 21, Ian Hutson and Tanya Alderton; Athelington, July 14th, Ian Sykes and Rachel Cleary; August 11, Daniel Colnet and Sarah Colnet.

● GAS HEATER WANTED: Do you have a gas heater, SuperSer type, that you do not need? If so, please give it to Horham Church, and be warmer there this winter! Tel 384216.

***With all good wishes, David and Margaret Streeter***

**WEATHER I AM OR WEATHER I AM NOT!**

**POETRY CORNER**

*The weather has been a bit of a catastrophe? A catastrophe - understatement of the year! We have had the wettest drought since records began? The driest, warmest winter since records began!*

*And I know why? Why? Its not the jetstream or El Niño! The weather got the months mixed up? The month mixed up - yeah right!*

*Well January became June - but the sun's not near? February became July with a bit of March thrown in! Half March & April became May & April?*

*June was January & July was February! August is March & September becomes October? October is December & November is September!*

*December is December? But what happened to May? The answer is when you do a sum you have some thing left over - hence May?*

*So mixed weather most definitely this year!*

**Manday Miller**



**PAUL DURRANT & SON LTD**  
**— BUILDERS —**



Church Farm Bungalow, Rishangles, Eye, Suffolk IP23 7JX

Tel/Fax (01379) 678485 Mob 07798673946

Email [mail@pauldurrant.plus.com](mailto:mail@pauldurrant.plus.com)

*All types of work undertaken*

**Extensions, Renovations, Alterations, Repairs,  
Council Grant Work  
FREE ESTIMATES**

**Rates for adverts in four issues of Athelington, Horham & Redlingfield News distributed to approximately 300 homes in Horham, Athelington, Redlingfield and surrounds are:-**

1/6 page £8.50 (60mm deep, 60mm across)

1/3 page £16.50 (60mm deep, 125mm across)

1/4 page £12.50 (90mm deep, 60mm across)

1/2 page £25 (90mm deep, 125mm across)

A whole page £50

**You can supply the artwork and/or logos or we can design the adverts for you.**

Revenue goes towards the costs of producing the magazine and profits will be split between Horham & Athelington Parish Council and Redlingfield Village Meeting.



# UNDER ONE ROOF

## Mark Bancroft Paving Services

Specialist in all types of paving and hard landscaping

Driveways, patios, ornamental garden walls, water features, drainage and fencing

Family run business with more than 20 years of on-the-job experience

*Fast friendly professional*

*Fully insured and all work guaranteed*

*Call for Mark for friendly visit with a free quotation*

*01379677027 or mobile 07768636618*

# SPURLING & REMBLANCE



## MOTOR ENGINEERS



## MOT TEST CENTRE

\*Service and repairs to all cars, light commercial and 4x4's\*

\*Specialists in vehicle diagnostics\*

\*Free local collection and delivery \* Courtesy car available\*

\*Prompt attention assured \* Competitive rates\*

**(01379)384689**

Open 8:00 am -5:30pm Mon-Fri, 8:00am -12 noon Saturdays

Barley Hall, Laxfield Road, Stradbroke. IP21 5NQ

Located on the B111 7 - 1¾ mile outside Stradbroke, towards Laxfield

## Susan Whymark Funeral Service Ltd



Independent and Family Run

- Funerals arranged by trained experienced staff in our friendly office environment or in the comfort of your own home
- Free transport for visits to registrars, our Chapel and other related appointments
- Bereavement support group Open to all in need

Office & Chapel of Rest located at  
The Old Stables, Chestnut Farm  
Langton Green, Eye  
Suffolk, IP23 7HL

Independent of Any Large  
Corporation and Truly Owned  
And Run by The Whymark Family

24 Hour Telephone Number **01379 871168**

[www.susanwhymark.co.uk](http://www.susanwhymark.co.uk)  
email [susan@susanwhymark.co.uk](mailto:susan@susanwhymark.co.uk)



# MINI DIGGER & DUMPER HIRE

Two tonne & four tonne diggers  
available & many attachments

Diggers £50 per day or £200 per week

Dumpers £25 per day or £100 per week

Plus transport & VAT



***Call Tony on 07949608243 or 01379 870514  
Based in Denham***



**Safe & Sound**  
Hygiene and Pest Control

- Have you a problem with -
- Rats, Mice, Moles, Wasps or Rabbits?
- All typical Pests controlled.
- For ALL your Domestic / Commercial Pest Control.
- No obligation – free survey/quotes.
- Please call,
- 01379 788865 / 07809 226109 / 07518 731106

**[www.safeandsoundhygieneandpestcontrol.co.uk](http://www.safeandsoundhygieneandpestcontrol.co.uk)**



Home heating oil? We have got it covered

DISS

01379 652764



- Home heating oil
- Agricultural fuels
- Auto top up facility
- Monthly payment scheme
- Gas oil & road diesel
- Lubricants
- Boiler servicing

[www.watsonfuels.co.uk](http://www.watsonfuels.co.uk)



FULLY INSURED  
FULLY QUALIFIED

PROFESSIONAL PEST WILDLIFE MANAGEMENT

MOBILE: **07806 875985** HOME: **01379 852950**

[www.norfolkpestcontrolservices.co.uk](http://www.norfolkpestcontrolservices.co.uk)

# YOUR RELIABLE LOCAL PLUMBER



Anglian Water Approved

## Mark Jardine Plumbing & Heating



- All Household Plumbing, Large or Small
- Full Bathroom Installation
- Domestic Heating, Radiators, Pumps etc.
- Water Softeners
- All Work Anglian Water Certified
- Free Estimates & Fully Insured
- 24 Hour Emergency Call Out

Tel: 01379 672 904 Mob: 07854 924 801

Email: [mark.jardine@virgin.net](mailto:mark.jardine@virgin.net)

**Very special,  
delicious and unusual  
cakes made to order**

**Castles, fairies, dragons,  
beautiful wedding,  
anniversary and  
birthday cakes**

**Liz Gibson-Harries  
Rose Cottage  
The Street  
Horham**

**01379 384680 email: [all@gibson-harries.fsnet.co.uk](mailto:all@gibson-harries.fsnet.co.uk)**



**BOWHILL  
BOOKS**

*Interesting and collectable  
books bought and sold*

*Book searches & valuations*

---

**Call Chris Mawson**  
**01379**  
**870737**

**Robert Cole  
Plumbing & Heating**

Plumbing & Heating Installation  
Oil Boiler Servicing  
Woodburner Service & Installation  
Air-Source Heat Pumps  
Bathroom Refurbishment  
Emergency Call Out  
Mid Suffolk & South Norfolk

Free Estimates  
01379 741485  
rcoleplumbingservices@gmail.com




We aim to produce four seasonal issues a year, coming out at the end of February, May, August and November. Contributions or information needs to be with us by the 14th of that month at the latest to be included in that issue.

**The next issue - Autumn 2012 - is due to be published at the end of November. The final deadline for all submissions is November 14.**

Athelington, Horham & Redlingfield News cannot be held responsible for the quality of goods or services advertised. This disclaimer is inserted purely for legal/technical reasons and can in no way be construed as implying criticism of any supplier of goods or services.

## **Chain-Sawing Services**



- General tree felling
- Non-specialist branch removal
- Cutting up fallen trees/branches
- Also: Hedge cutting and strimming

Large and Small Jobs Welcome  
No VAT Charged - Fully Insured

Please contact ANDREW  
**01379 783335**





**Professional Servicing & Repairs.**  
Class 4 & 7 MOT Centre. ⚡



**Diagnostics on Engine management, ABS,  
Air-bag, Climate control & Body modules.**



**Body shop & Accident repair centre.**  
Recognised by most insurance companies.



**24hr Recovery & Roadside Assistance.**



**Fully Equipped HGV bays for service & repair.**  
Periodic maintenance checks & Test prep.  
Horse boxes & Race transporters Welcome.

**Cowhams**  
**Car**  
&  
**Commercial**

**Fressingfield**  
**IP21 5QT**  
**01379 388 999**

Please visit our website  
**[www.cowhams.co.uk](http://www.cowhams.co.uk)**  
to view our full list of  
services.



## **Cowhams** **Van Hire**



**Van & Truck Rental At Very Competitive Prices**

01728 628233

*Athelington Hall*



*Corporate*



*Log Cabin Holidays*



*Weddings*

*We also specialise in Hog Roasts for up to 180 people on site or they can be delivered*  
*Smaller function room available with kitchen for the smaller function*

**Athelington Hall Horham Eye Suffolk IP21 5EJ**  
**[www.athelingtonhall.co.uk](http://www.athelingtonhall.co.uk) [peter@athelingtonhall.co.uk](mailto:peter@athelingtonhall.co.uk)**

## BRIAN DADE GENERAL BUILDER

for all your general building  
and maintenance needs

1 Castle Cottages,  
Wingfield Green,  
Diss, IP21 5RE

tel: 01379 384504

mob: 07946 411562

email: b.dade@btinternet.com

## FRESH FREE RANGE EGGS

Poplar Hall Farm  
Occold Road  
Redlingfield  
STALL AT GATE



For larger orders please  
call 01379 678318



## Thyme for Food

*Finest Quality Catering*

**All Requirements & Budgets  
Catered For -  
Parties**

**Weddings - Special Events  
Corporate Hospitality  
Wholesale Prepared Foods**

We Use Only Premium Quality Produce  
- Local & Organic Where Available  
To Discuss Your Requirements Call  
Marie

Worlingworth Suffolk IP13 7HX

**Tel: 07789684434**

[www.thyme4food.co.uk](http://www.thyme4food.co.uk)

## CHIMNEY SWEEP

### ECO SWEEP

CHIMNEY SERVICES

- NEW POWER SWEEPING METHOD USED  
FOR A MORE THOROUGH CHIMNEY CLEAN  
THAN BRUSHES.
- INDUSTRIAL HEPA FILTERED VACUUM.
- FULLY INSURED.
- INSURANCE RECOGNIZED CERTIFICATES ISSUED.
- SPOTLESS, RELIABLE AND FRIENDLY SERVICE.
- ALL CHIMNEYS, WOOD BURNERS, AGA, BOILER  
FLUES SWEEP.
- GUILD OF MASTER SWEEPS CERTIFICATED MEMBER.



TEL. 01359 232335



The CMC

## Complementary Medicine Centre

The Complementary Medicine Centre  
provides a full range of therapies.

***Free 15 minute  
introductory consultations are available  
with all therapists.***



The Gilchrist Unit, Hartismere Hospital, Castleton Way, Eye,  
Suffolk IP23 7BH Tel. 01379 870707

[www.compmed.co.uk](http://www.compmed.co.uk) e-mail: [info@compmed.co.uk](mailto:info@compmed.co.uk)

FENCING

***Post & Rail - Stock - Rabbit - Electric Fencing  
Horse Netting - High Tensile***

**Entrance - Field Gates Installed**

***Domestic Fencing***

**Tree Work - Hedge Cutting & Reducing**

***Clearing Prior To Fence Erection***

**Mechanical Post Knocking Service Available!**

***Top Quality Work - Can Supply Material  
Or Happy To Use Your Own***

**For A Competitive, Friendly And Tidy Service  
Please Contact - Andrew Muttock The Postman  
Fencing Services**

**Home: 01379 678778 Mobile: 07876355579**

**Email: [ajmthepostman@yahoo.com](mailto:ajmthepostman@yahoo.com)**



# Barley Green Garage

Laxfield Road, Stradbroke, IP21 5JT  
Telephone 01379 388 947

[www.barleygreengarage.com](http://www.barleygreengarage.com)

Servicing • Repairs • Tyres • Exhausts • Batteries • Air-Con • MOT Testing

*6ft Trampolines only £79  
While stocks last*



**Air-con servicing from £20**



*We sell disposable party BBQs*



**LPG Auto-gas filling station**



*Courtesy cars available*



***Free local collection & delivery***