

***Athelington, Horham & Redlingfield* NEWS**



SUMMER 2019
Issue No. 46

SPURLING & REMBLANCE



MOTOR ENGINEERS
MOT TEST CENTRE



**Service and repairs to all cars,
light commercial and 4x4s**

Specialists in vehicle diagnostics

Free local collection and delivery

Courtesy car available

Prompt attention assured

Competitive rates

(01379) 384689

Open 8.00am-5.30pm Mon-Fri, 8am-noon Saturdays

Barley Hall, Laxfield Road, Stradbroke, IP21 5NQ

on the B1117 - 1¾ mile outside Stradbroke, towards Laxfield

THERE'S A LOT THAT MAKES living in this area a pleasure – the people and sense of community must come at the top but one of the many other great joys is the countryside and wildlife. We've made a real effort to make our three quarters of an acre plot wildlife-friendly – untidy areas, lots of bird feeders, wood piles, toad boxes, hedgehog houses etc – and it is paying off. A pair of turtle doves have been heard, and seen in, our garden and surrounds for the last few weeks so we hope they'll be nesting nearby. An old bee and insect house I'd earmarked for the skip is now alive with masonry bees. I'd left it standing on the edge of shelf beside the shed. Apparently I'd picked the perfect spot. We always have hedgehogs – at one stage we had ten. Butterflies, moths

and bees flit among the flowerbeds. The bird feeders are busy with blue and great tits, goldfinches, chaffinches and the like along with the occasional bullfinch. Wrens, blackbirds, sparrows and dunnocks throng the hedgerows. We've got woodpeckers – a few years back a tiny lesser spotted woodpecker had to be rescued from our greenhouse. Even the greenfinches seem to be making a come back. But I have to admit my favourites are the long-tailed tits that fly through chuntering away to each other non-stop in lively conversation. There are obviously downsides – muntjacs munching our favourite flowers, squirrels at the bird feeders and hornets knocking on our windows but even with those our garden offers better shows than the telly.

THE NEXT WEEKS ARE CERTAIN TO BE BUSY WITH VILLAGE events on most weekends. It kicks off on Saturday June 1st with Horham Car Boot (which due to the vagaries of print schedules may have happened by the time you read this) and then on Sunday June 9th is Redlingfield Fun Village Dog Show, followed by Horham Village Show on Saturday June 15th. You can catch your breath over the next weekend before The Red Feather Club's big Americana weekend with a dance on Saturday June 29th and Americana Day on Sunday June 30th, then its Horham Classic Car Rally & BBQ on Saturday July 6th and on Saturday July 13th Redlingfield Summer Fayre & BBQ. I'm just tired thinking about it. Hope you enjoy your village mag.

Mike Ager

If you would like to advertise or contribute to the magazine or have an event or organisation you would like featured contact editors: Evelyn Adey on evelyn.adey@btinternet.com or 01728 628428 at Ivy House Barn, Southolt Road, Athelington, IP21 5EL; or Mike Ager on mike@gn.apc.org or 01379 678835 at Hidcote Lodge, Mill Road, Redlingfield, IP23 7QU. All issues are available at www.redlingfield.suffolk.gov.uk

We aim to produce four full-colour issues a year, coming out at the end of February, May, August and November.

Deadlines for adverts & editorial:

Spring issue (covering Mar, April & May) **Final deadline February 14**

Summer issue (covering June, July & Aug) **Final deadline May 14**

Autumn issue (covering Sept, Oct & Nov) **Final deadline August 14**

Winter issue (covering Dec, Jan & Feb) **Final deadline November 14**

Raptors boss our skies

MAN HAS A CLOSE relationship with countless species of birds, whether bird-watching in exotic world-wide locations, admiring them in the wild in our gardens and reserves, or eating domesticated chicken and turkey.

But it is the raptor, or bird of prey, that attracts a special interest simply by being the “boss” of the sky, the head of the food chain and the one to look out for. After seeing my first Redlingfield red kite in 2013, another has been spotted recently in Horham, marsh harriers are now numerous in Minsmere and buzzards are abundant everywhere.

Falconry has always attracted a crowd and whether at Stonham or the Suffolk Show, the large Harris hawk is a favourite. Apart from budgerigars and canaries and the occasional magpie, the humble jackdaw can also make a very good pet.

A certain Dr. David Harris relates the tale of a man who fed his pet jackdaw with treats from his pocket whilst walking in the woods. When nature called and the man relieved himself against a tree, there followed what can only be described as a “painful misunderstanding.” But I wouldn’t worry about a little thing like that.

MARCH 20TH WAS THE occasion of another supermoon. This one is also called the worm moon when worm activity indicates to the farmer it is time to sow his crops in the spring. This year, it coincided with a first sight of a migrating toad, sadly not as numerous as years ago when I used to handpick them from the drive at night thinking to save them from being squashed by farm traffic the next morning.

However, other species have raised



PAUL DURRANT & SON LTD
BUILDERS



Church Farm Bungalow, Rishangles, Eye, Suffolk IP23 7JX

Tel/Fax (01379) 678485 Mob 07798673946

Email mail@pauldurrant.plus.com

All types of work undertaken

**Extensions, Renovations, Alterations, Repairs,
 Council Grant Work**

FREE ESTIMATES

Trevor Edwards' latest slice of Wash Farm Wildlife

their game just recently and this year I hope to watch the nesting of both buzzards and kingfishers, the latter thanks to Graham Abbott up at Peartree Cottage, where Eddie Hawes showed me the way to a large pond.

Eddie also showed me a newspaper cutting of a rhino-horn poacher getting his come-uppance in Africa. After his hateful crime, this criminal was trampled to death by an elephant and then eaten by a pride of lions ... apparently all that was left was his head and a pair of pants. So there is a God after all.

A TRIP TO KENYA GAVE ME A chance to photograph the most colourful bird I have ever seen, a lilac-breasted roller, where the visit was an



The beautiful lilac-breasted roller.

education in more senses than one. We saw first a slum school in Nairobi and then a country school which had been set up to house and educate the multitude of orphans from the HIV disease which had wiped out the parent generation. Miles from anywhere in this vast land, this school housed 700 children and offered room for 300 grandparents to help run it, complete with its own farm. *Continued over.*



R Cole Plumbing Services

70 Scole Common, Scole, Diss, Norfolk

Tel: 01379 741485 Mobile: 07961 271644

Email: rcoleplumbingservices@gmail.com

Oftic 101.105E and 600 Registered Technician

Continued from previous page

Here the farm manager looks after a large herd of goats, a reliable source of meat and milk in the dry, scrubby countryside, and a large very productive vegetable garden plus cows and chickens.

Despite the perfect weather for vegetables, where everything just keeps growing, he told us they have just invested in controlled-environment poly-tunnels because of the overwhelming challenge from outdoor pests ... so much for organic farming I thought. It was their second attempt at plastic tunnel protection, this time supported with metal frames as the termites had destroyed the early wood-built versions.

NESTING TIME IS ALSO LARSEN trapping time to control the magpies and crows and all other corvids, or egg-eaters, and gamekeeper Hardy has caught a new species for the first time. The intruder alarm system was repeatedly triggered in the living-room by a mystery intruder at Benningham

Hall and, on investigation, a jackdaw nesting in the chimney was found to be the culprit.

AFTER A VERY EARLY SPRING, the weather turned out to be typical for April, with sunny intervals and regular showers, sometimes heavy and wintry. A local TV weatherman got it just right when he said the showers will be hitting us like dirty socks in a washing machine. What a perfect expression.

The first week in May was cool and blowy with half an inch of rain. It was May 8th, a cold unpleasant day, before we saw a swallow here and just as I was thinking one swallow doesn't make a summer, its mate arrived and the swooping into the woodshed began. The swallows here arrive much later than some but I am pleased to see them at all after the latest sad birding story in the news.

Drew Abbott showed me an article on netting swallows in Egypt which was appalling. Swallows are caught by the million as they migrate back and forth to Africa, "harvested" by vast

Optimal Heating

Father & Son Team

With over 30 years experience

Specialist Heating Engineers

Oil, Natural Gas & LPG Servicing and Repairs



Tel: 01728 628687
Mobile: 07806 660399



FEATURES & NEWS

nets in the Nile valley and along the coast, making a mockery of attempts to encourage them here and in Europe with the suitable nesting habitat.

Migrating birds travelling between Europe and Africa will avoid crossing the open sea of the Mediterranean if they can and instead chose the land routes either side, via Gibraltar or Egypt and the Near East. So then to be caught up in mist nets stretching for hundreds of kilometres is a very sad end.

THE IMPROVED WEATHER IN the middle of May was good news for the nesting season as birds need to match the hatching of the eggs to the weather. Here the bluetit is a specialist. A pair will need hundreds of caterpillars a day and can slow down the incubation accordingly so that the chicks can get the food supply when the weather becomes warmer and drier.



A herd of goats is the mainstay of the orphan schools' kitchen.

THE OLD SAYING ABOUT summer rainfall ... oak before the ash, we'll only get a splash, or conversely, ash before the oak, we'll get a proper soak ... has been scientifically debunked. Apparently, the oak has responded to climate warming by coming into leaf earlier whereas the ash only responds to length of daylight which remains unchanged. Not a lot of people know that as Michael Caine would say.

Trevor Edwards

PAINTING & DECORATING INTERIOR & EXTERIOR

**FOR A CONSCIENTIOUS, RELIABLE SERVICE
23 YEARS' EXPERIENCE
PAUL GODDARD**

Tel: 01986 784594



New Horham & Athelington

NEWLY-ELECTED BILL Craig, Liz Gibson-Harries (new chairman), April Groen (new vice-chairman), Tom Wright, Jasen Smith-Jeffrey and Paul Hambling had their first Horham and Athelington Parish Council meeting last month, which was well attended by members of the public.

New chairman Liz welcomed everyone and thanked outgoing chair Hav Wilkins and Angela Wilkins who is stepping down as parish clerk after many years of service to the villages.

Many residents shared concerns about the huge chicken units proposed in a planning 'Scoping Exercise' from

EPigs Ltd (see more on page 24) and new parish planning members Liz, Bill and Jasen are already at work putting in rigorous plans to object if this becomes a full application. April explained that a BBQ to fund-raise for this was to be held in Horham on Saturday 20th July and could anyone willing to help contact her.

Among items discussed and agreed at this first meeting, were up to £1,000 from the budget towards new speed control signs being investigated by Paul and £20 for plants in a large flower planter for the village being organised by Tom. A noticeboard for Athelington was agreed, with Jasen to

Wilby Pre-School

WHERE LEARNING STARTS

Places available now for 3 and 4 years olds.

**Provision available 5 days a week
for up to 30 hours.**

- **Flexible Sessions available
Monday to Friday**
- **Woodland School learning**
- **Broad curriculum including Music,
the Arts and frequent trips**
- **Wrap around care on site or with
school-linked OFSTED registered
child minder**

**DREAM BIG,
WORK HARD**

For more information call us at 01379384708
or visit us at www.wilbyprimary.org.uk



parish council



April hands in more than 100 residents' letters of protest at proposed giant chicken units to Suffolk County Council.

ask residents where they would like to see it. Additional dog poo bins were also agreed, with one to be in Athelington.

The council would like to ask residents to recycle their glass at the Community Centre as much as possible as the parish gets money for this which we can then use in the villages. Bring us your bottles!

April Groen

■ MAY 2 ELECTION RESULTS:

Midsuffolk District Council's Eye ward (which now includes Redlingfield): Peter John Walter Gould, The Conservative Party Candidate, was elected.

Midsuffolk District Council's Hoxne & Worlingworth ward (which includes Horham & Athelington): Matthew Jonathan Rawle Hicks, The Conservative Party Candidate, was elected.

Horham & Athelington Parish Council: Jasen Ronald Richard Smith-Jeffrey was elected for Athelington while William Craig, Elizabeth Gibson-Harries, April Groen, Jacques Louis Groen, Paul Dennis Hambling and Thomas Wright were elected for Horham.

STUMP GRINDING

Call Tony on 07949608243 for a quote



Also Mini Diggers, Dumpers, Rollers etc for hire. Based in Denham.

New campervan and staff

THE RURAL Coffee Caravan Information Project, which regularly visits Redlingfield and Horham Old School, has added a third vehicle, three members of staff and its founder is one of the first to receive the new Suffolk Medal.

The new campervan named Lottie comes after a £87,000 grant from the Building Connections Fund, a partnership between the

Government, Big Lottery Fund and The Co-op Foundation, which also saw the recruitment of Diana Patrick as full-time manager for the charity's new Building Connections Project.

A grant from the Warm Homes Fund, via East Suffolk Council, will kick start an energy awareness project addressing fuel poverty and the appointment of Annette Dunning as community engagement

and rural energy officer, and Joe Howarth as rural energy officer.

The Suffolk Medal, which was unveiled in March 2019 to reward and champion people who have made a lasting difference to the county, has been awarded to Canon Sally Fogden MBE, former East Anglian Daily Times and Ipswich Star editor Terry Hunt, and lifelong social activist Richard Martineau. They are the first winners of the



2 Lambseth Street, Eye,
Suffolk, IP23 7AG

**We hope to see
you soon!**

OPENING TIMES 2019

Monday	10am-6pm
Tuesday	11am-8pm
Wednesday	9am-6pm
Thursday	11am-8pm
Friday	9am-6pm
Saturday	8am-3pm

EYE SALON

01379 871996

Now open every Monday 10am-6pm

**Enjoy 20% OFF all hairdressing
services every MONDAY
for the FIRST year!**

Discount available until Monday 6th January 2020

Eye Salon is a small friendly hair salon located within Eye. We have been trading as Eye Salon for more than 2 years now and have gained a large client base.

We have a large range of hairdressing services that we can adjust to suit our clients' individual needs, whatever style or age. All staff members are well trained with well-known, trusted brands such as Wella, Nioxin, Moroccan oil, Olaplex and American Crew and all have a passion for hair.

We are now open 6 days a week including 2 late nights a week.

for Rural Coffee Caravan



**The Coffee Caravan
in Redlingfield.**

award. Canon Sally Fogden is founder of the Rural Coffee Caravan and played a key role in launching the Meet-up Mondays initiative. She was also the driving force behind the

Addington Fund, which helped to alleviate problems for Suffolk pig farmers during the outbreak of swine fever in 2000 and rural

communities during the foot and mouth epidemic in 2001.

The medal, designed by Suffolk artist Maggi Hambling, is to recognise, reward and champion “exceptional”

contributions of people living in Suffolk who’ve made a lasting difference to people’s lives.

The 2019 medals will be presented on Thursday, June 20, at the Museum of East Anglian Life.

Meet Up Mondays is a scheme hosted by local pubs, cafes and tearooms inviting people who might be struggling with loneliness or isolation into a friendly and welcoming environment at least one day a week.

UNDER ONE ROOF

Mark Bancroft Paving Services

Specialist in all types of paving and hard landscaping

Driveways, patios, ornamental garden walls, water features, drainage and fencing

Family run business with more than 20 years of on-the-job experience

Professional pressure washing

Fast friendly professional

Fully insured and all work guaranteed

**Call for Mark for a friendly visit with a free quotation
01379677027 or mobile 07768636618**

Suffolk's studios

MORE THAN 100 ARTISTS, GALLERIES and makers around the Suffolk will be opening their doors to the public over the five weekends of June as part of Suffolk Open Studios.

During the Open Studios weekends visitors are able to have a look behind the scenes and see the artists in action. There are also hubs and trails that can make it easier to see many artists in one day.

The printed directory is available from libraries, schools, shops and tourist information offices as well as online at www.suffolkopenstudios.org.

Locally three artists are opening their studios:

Sue Clarke, whose studio is at Wingfield Barns,

paints mainly in oils and occasionally watercolours. Her studio is open every weekend in June.

Patricia Woodward's studio at Green Oak, New Street, Stradbroke is open every weekend except June 15th and 16th. She is a fine arts printmaker and painter who also has a passion for drawing and quilt-making.

Christine McKechnie's studio at Cornerways, The Street, Southolt, is open on the weekends of June 15/16th, 22/23th and 29/30th. Her watercolour painted paper collages use hand-painted paper, which is cut, applied and layered employing many hundreds of pieces.

As well as individual artists there are trails such as Artists Around and Beyond Framlingham



Redlingfield Produce Show

Sunday 1st September 2019

Classes to include: carrots, potatoes, runner beans, sweet peas, dahlias & marrows, knitted art, house plant, baking, flower arrangement & photograph of Suffolk sunset.

Redlingfield Doorstep Green. Proceeds to St Andrews Church.
Refreshments available including licenced bar.

Full programme & times to follow! Contact Alison 07817207462

Details will be available on www.redlingfield.suffolk.gov.uk



open again



Far left: Spring Walk by Patricia Woodward. Top: Green Lane by Christine McKechnie. Above: Mushrooms at Minsmere by Sue Clarke.

which runs on June 1st/2nd and 15th/16th. Wingfield Barns is one of the hubs with the Inspired Art at Wingfield Barns exhibition open every weekend and Tuesday in June noon-4pm.

Mike Ager

■ **HORHAM EVENTS:** On Saturday, 1st June [the mag might not reach you until after this event], Horham Car Boot Sale will be on the Community Centre Meadow, from 10am and from 11am for buyers. There will be a bar, refreshments etc (sellers £5 pre booked, £6 on the day, Karen 07775672220) in aid of Community Centre Funds. Horham Village Show is on Saturday, 15th June, 1.30-4.30pm at the community centre. The Old School and the Church Tower will also be open. There will be a fun dog show, arts and crafts, sideshows and much more, BBQ, and a bar (01379 384869). On Saturday, 6th July, at Horham Community Centre there will be a Classic Car (commercial, bikes etc) Get Together from 3pm onwards. A convivial gathering with BBQ and bar. Ring David on 01379 384493, after 6pm please.

Margaret Streeter

■ **VOLUNTEERS WANTED:** Home-Start Mid & West Suffolk urgently need more volunteers to support families across Mid Suffolk District Council area. Home-Start recruit and train volunteers to support families with children aged 11 and under in their own home. They couldn't carry out this vital work without volunteers, so if you are a parent, grandparent or step parent and can spare 2-3 hours a week to do something amazing, please contact them. For more information email Linda at office@homestartmidsuffolk.org.uk or call 01379 678552.

Linda Wood, Scheme Support Officer

■ **HOXON HUNDRED:** The new contact for Hoxon Hundred folk club & traditional morris dancing group is Jane Pearse, email janepearse@btinternet.com or phone 01379 871006 for information on the group or visit www.hoxonhundred.co.uk.

Midge Gibbons

Exciting events at The

SPRING HAS BEEN FULL OF interesting and exciting events at The Old School. The Rural Coffee Caravan has visited twice providing information on a wide range of issues including energy and help with fuel bills.

The Coffee Caravan also ran a 'postcard workshop' at which we had a full house. Suffolk Artlink has provided three wonderful afternoon workshops, willow weaving, roller printing and country dancing. We have a couple more to come, there will be plaster casting on June 6th. These workshops are free and have proved to be extremely popular.

Hawk Honey gave us a very interesting and illuminating talk on bees. Several of us have decided to change our gardening practice to provide a bee and insect-friendly environment.

The yoga group meet every Monday at 1.30pm and the Book Club on the first Tuesday of the month at 2pm. There is traditional music on the second Monday evening of each month from 8pm; the bar is open and the musicians welcome an audience!

On June 8th the hugely talented 'Blow-ins' are making a return visit to The Old School with a programme of traditional and modern folk music for



The Daily Care Agency

High Banks, Athelington Road, Horham, Eye IP21 5EH
(Open Monday to Friday 09.00-17.00 – closed Bank Holidays)
Tel: **01379 388438** Mobile: **07977 075301**
E-mail: office@thedailycareagency.co.uk

***ARE YOU LOOKING FOR SOME EXTRA CARE AND SUPPORT TO
HELP YOU REMAIN INDEPENDENT WITHIN YOUR OWN HOME
AND COMMUNITY?***

THE DAILY CARE AGENCY IS A SMALL PRIVATELY OWNED
DOMICILIARY AGENCY THAT TAKES PRIDE IN HAVING THE TIME
TO CARE AND OFFER INDIVIDUAL SUPPORT TO OUR CLIENTS

FOR FURTHER INFORMATION PLEASE CONTACT 01379 388438

***ARE YOU A CARER? – WE REGULARLY RECRUIT FOR LOCAL
CARERS TO JOIN OUR TEAM***

The Daily Care Agency is registered and therefore licensed to provide services by the
Care Quality Commission. Provider ID 1-101723169

Old School

harp, guitar and voices. This is not to be missed, contact us for tickets.

Do check our Facebook page for news of upcoming events plus important information about current computer and telephone scams and door-to-door rogue traders.

We are preparing for the Village Show on the 15th June. The Old School will again host an art and craft exhibition, as well as the 'Paint a Masterpiece' activity that proved so popular last year. The bar will be open and we will be selling tea and cakes too. We hope to see you there.

We are open for Coffee and Computer tuition on Wednesday mornings 10.30am-noon, the bar is open on Tuesday and Friday evenings from 8.30pm and Sunday lunchtimes from 12.30pm. The hall is available to



**Roller
printing
& basket
weaving.**

hire, please ring Pip on 01379 384370.

***The Horham and Athelington
Village Hall (The Old School)
Management Committee***

■ **PLANNING: TO BE DECIDED: Environmental Impact Assessment & Scoping**

Opinion: for 7 poultry sheds on land to the south of B1117 Horham & 12 proposed poultry sheds land to the east of Woodlane Road, Southolt; notification for prior approval under general permitted development of plans to convert an agricultural building to a dwelling at **Mill Farm, Mill Road, Redlingfield**; application for a Lawful Development Certificate for use of land at **Little Meadow Farm, Stradbroke Road, Horham**, for permanent unrestricted residential use; application to erect a new annex and garage building at **Rose Farm, Athelington Road, Horham**. **GRANTED:** application to erect two-storey side extension **2 Rose Cottage, Athelington Road, Horham**; application to erect a rear extension for use as a disabled bed room and wet room at **The Treen, The Street, Horham**; application for conversion and extension of **The Old School House, Green Lane, Redlingfield**, to provide one residential dwelling. **REFUSED:** outline application (access to be considered) for the erection of up to two detached dwellings with garages on land opposite **Wheatcrofts, The Street, Horham**.

Planning information from Midsuffolk District Council
<https://planning.baberghmidsuffolk.gov.uk/online-applications/>

FUN VILLAGE DOG SHOW

**Redlingfield Doorstep Green
Sunday 9th June starts 11am**

Rosettes for all entries, classes to include:

best rescue, best puppy (under 1 year),
best young handler (under 12 years),
best veteran (over 10 years), scruffiest,
waggiest tail, best bitch & best dog,
dog with the best trick & dog the
judge would like to take home.

**Refreshments available & licenced bar.
Show proceeds to St Andrews Church.**

Full programme & times to follow! Contact Alison 07817207462

Details will be available on www.redlingfield.suffolk.gov.uk





■ **IN THE NEWS:** A journalist and photographer from Associated Press's London Bureau visited Redlingfield Memorial to talk to locals about the importance of remembering the dead for a story to go to UK and US newspapers around the anniversary of D-Day. Reporter Danica Kirka is pictured interviewing locals.

From Redlingfield's AGM

REDLINGFIELD VILLAGE Meetings AGM at Horham Community Centre re-elected the village committee.

They are: Andrew Abbott, Graham Abbott, Katie Abbott, Mike Ager, Jeanette Brierley, Susan Chapman, Allan Chapman, Will Edwards, Lesley & Tony Rose-Freitas, Emma Hewitt, Pat Kelly, Russell Kerry, Manday Miller, Adrian Smith and Janet Norman-Philips.

The treasurer Jeanette Brierley, secretary Janet Norman-Philips and chairman Mike Ager were also re-elected to their offices. Jeanette said village finances were stable with the magazine breaking even and last year's summer fayre and BBQ making £860 profit, to add to profits from the pubs on the green, personal donations and a donation from race night. Jeanette also thought it was time we started looking for her replacement.

Adrian Smith agreed to step into the role of Neighbourhood-watch co-ordinator and it is hoped he can start a text group to alert villagers to problems and issues.

Janet will continue to try to get our defibrillator placed in the now unused telephone box although talks with the owners have proved difficult. She will also continue to investigate extending the village's 30mph speed limit further towards Eye on the Cranley Road to beyond Kiln Farm.

The next major step for the village will be putting mesh on the Doorstep Green extension to provide all-weather car parking. The committee were thanked for their hard work over the previous year.

Mike Ager



BPS DECORATORS

ALL ASPECTS OF INTERIOR & EXTERIOR PAINTING, DECORATING & REPAIR WORK UNDERTAKEN

Call **Ben** for a free **NO OBLIGATION** quote on
01728 684383 or 07469 146888
or 07879 226777 or email me on
bpsdecorators@gmail.com



Christopher (Chris) Roy Gibbons aged 73 years passed peacefully at St Elizabeth Hospice, Ipswich, on April 15th, 2019, following a long illness courageously borne. Beloved husband of Marjery (Midge), much loved father of Dhugal, Douglas (Doug) and the late Damian. The funeral service at St Andrew's Church, Redlingfield on Monday, May 13th, and the wake afterwards at Horham Community Centre, saw performances by the Hoxon Hundred. Donations, if desired, in memory of Chris for either St Andrew's Church, Redlingfield or St Elizabeth Hospice, Ipswich may be sent c/o Rosedale Funeral Home, 63 Victoria Road, Diss, Norfolk, IP22 4JE or via the Much Loved online memorial site at www.rosedalefuneralhome.co.uk.

Extracts from Midge's eulogy: I first met Chris 50 years ago. He had a big grin on his face which said he was really going to enjoy the party to which we were going. He lived life with enthusiasm, which meant sometimes he could get quite carried away. When we first joined Hoxon Hundred Morris he had to be told not to leap so high in the air because he was coming down to earth half a beat behind the music.

Well we did the conventional, surprising for someone so unconventional as Chris: we went out together for a year, were engaged for a year and then got married. Our first

son, Dhugal, was born after 2 years. Chris was so excited he couldn't wait to have a cup of tea with me but was off down the pub to tell his mates. Doug followed 2 years later and this time Chris' enthusiasm had me really worried. It looked as if Doug might be born at home without any medical help, but Chris rolled up his sleeves and told me he knew what to do at which point I started shaking. Luckily we had time to get to the hospital after all.

Our little Damian was born when our sons were 9 years and 7 years respectively. This was a sad time for us since we knew Damian's life was limited and he died at just 10½ weeks old. We shed some quiet tears together but having Dhugal and Doug meant life had to carry on.

We had moved to Suffolk when Dhugal was not quite 2 years old and we decided that the Good Life was for us. We had goats, we had chickens who would get up on the car to watch Chris with interest whilst he was repairing the engine, and we had bees who were not quite so charming.

After 15 years in Bedfield with a quarter acre garden Chris was hankering for more land and so we





moved to Redlingfield to convert Rush Meadow Barn, (in reality a cowshed) to our home. The first month we were there Chris bought a tractor, the second month another tractor, the third month he bid for another one but, luckily, he did not get it ...

Now that we had plenty of land Chris was able to build up a store of “it’ll come in handy one of these days” and the more sheds he got the more things he managed to acquire to fill them. Shortly before he died he went round the garden with me pointing out all the things I should keep as they were useful – what was I to do with an enormous drum with cable that would stretch all the way to the bottom of our drive? I had strict instructions to keep that.

... When he retired at the age of 50 there was no question of him feeling bored as there was so much he wanted to do that there didn’t seem enough hours in the day for everything. He had over 20 years of enjoying life to the

full in retirement.

Before we realised that he was ill he had many activities that he approached with total enthusiasm and almost obsessiveness – Aikido (a martial art), Morris Dancing (which we did together), to the gym on a Tuesday morning (Trevor said his frantic activity made everyone laugh), Tai Chi at Bury St Edmunds on Friday mornings with his friend, Neil, and singing every other Tuesday evening which he enjoyed, although with more enthusiasm than talent. Any activity which Chris did, including ballroom dancing, which we did in our younger days, he approached as a “good physical workout”.

... It was the beginning of February 2018 that we got the news we had suspected: Chris had pancreatic cancer. He remained positive wanting to live life to the full as much as he could in the time he had left to him. He went through gruelling chemotherapy...

He said he wanted his coffin carried out to “Wish me luck as you wave me goodbye”. He is not getting that but he will have the same music, played by Morris musicians, as his dear friend, Paul, had at his funeral last December. Chris was so glad that he was able to dance in the procession when Paul was carried to the Church for his funeral. Paul and Chris used to dance Cotswold tradition Morris opposite each other thwacking each other’s sticks with such force that I was in mortal fear that one slip and one of them would have been killed! Paul and Chris just enjoyed seeing who could hit the other’s stick the hardest.



95th vet stars in modern

THE FRIENDLY INVASION Reunion welcomed visitors from the US and Europe to the Red Feather Club. There were the young and young at heart in the 50-plus group.

Star of the show was 95th Bomb Group veteran 2nd Lt Ray Hobbs, a pilot in the 344th Bomb Squadron. There were also three widows of 95th men among the group.

Linda Woodward and Beverley Abbott again did an amazing job organising the event. Their hard work, and the efforts of the countless others, made sure it was a reunion to remember.

The reunion, hosted by the Red Feather Club, which is run by the 95th Bomb Group Heritage Association, included visits to the Cambridge

American Cemetery & Memorial, Cambridge, the Bentwaters Cold War Museum, Aldeburgh, the River Orwell and a day in Norwich.

A social evening at the Red Feather Club saw visitor Tim Pitts give a presentation about his mother's time working for the Red Cross at the base and a special showing of the film Magpie.

On the Saturday, a military vehicle convoy visited the 490th Bomb Group Memorial in Eye, Station 1-1-9 brewery, some of the Eye airfield locations and the 95th Bomb Group Hospital Museum in Denham. The day ended with traditional fish & chips at the Red Feather Club and the 1940s style singing trio The Knightingales & DJ Andy AV8.





Friendly Invasion

Sunday morning saw a wreath-laying ceremony in Horham before a service of thanksgiving at St Mary's taken by Rev Michael Womack. The open day was a highlight for the visitors with a traditional afternoon tea and singalong.

It was particularly pleasing for the organisers that not only did a veteran make the trip but that many of the younger generation also came.

Specially poignant was the interment of S/Sgt Bob Fay's ashes at the Red Feather Club by his widow Gloria and daughter Sherri. There was also an emotional ceremony at the Reddingfield Memorial with the Marcia Moyer, the niece of 2nd Lt Warren Strawn, and family paying tribute to her uncle

The next big event in the RFC calendar is the Americana weekend on June 29th and 30th with a dance on the Saturday night and Americana Day on

Sunday celebrating all things American with cars stalls and more.

The Red Feather Club Museum, Coldhams Hill, Denham, IP21 5DG, is open 10am-4pm on the last Sunday of the month April to October. See www.95thbg-horham for details.

Mike Ager.



Reunion pictures include: top left, Ray Hobbs with Sophie Green; below, Gloria Fay & daughter with bikers & Alan Roper; & below right, Marcia Moyer & family with Gail Hawes. Photographs by Philip Samponaro, Ian Roper, Luc Zaman & Janet Norman-Philips.



WHAT'S ON

EVERY WEEKEND IN JUNE

Suffolk Open Studios: See story.

SATURDAY JUNE 1

Horham Car Boot: see story.

Behind The Eyes: Live Radio Plays Recording, The Bank Arts Centre, Eye, 7.30pm, £8.

SUNDAY JUNE 2

Steam Railway Day: Mid Suffolk Light Railway Museum.

WEDNESDAY JUNE 5

Redlingfield Coffee Caravan: Centre of village, 10am-noon.

Redlingfield Churchyard Tidy: Help to get St Andrew's churchyard looking its best. Come along with your trimmers, trimmers and other garden tools, 6pm.

FRIDAY JUNE 7

The Favourite: Hoxne Film Night.

SATURDAY JUNE 8 & SUNDAY JUNE 9

Eye Open Gardens: Adults £5, children

under 16 free. Fundraising for Eye Church Development Appeal. More than 25 gardens open. Teas in Town Hall. Vintage bus rides to outlying gardens.

SUNDAY JUNE 9

Redlingfield Fun Dog Show: Doorstep Green to raise funds in aid of St Andrews Church repairs and improvements. Organised by Alison Smith (07817 207462). Bar open.

Rock 'n' Roll Record Hop: Occold Village Hall, 2pm-5pm, £5.50.

Steam Railway Day: Mid Suffolk Light Railway Museum.

SATURDAY JUNE 15

Horham Village Show: see story.

SATURDAY & SUNDAY JUNE 15 & 16

Bedfield Open Gardens: £5 per person entry, £4 in advance 01728 627134 or 628180.

YOUR RELIABLE LOCAL PLUMBER



Anglian Water Approved

Mark Jardine
Plumbing & Heating



- All Household Plumbing, Large or Small
- Full Bathroom Installation
- Domestic Heating, Radiators, Pumps etc.
- Water Softeners
- All Work Anglian Water Certified
- Free Estimates & Fully Insured
- 24 Hour Emergency Call Out

Tel: 01728 628291 Mob: 07854 924 801
Email: mgjardine@btinternet.com

SUNDAY JUNE 16

Suffolk Vehicle Enthusiasts: Mid Suffolk Light Railway Museum.

THURSDAY JUNE 20

On the Basis of Sex: Stradbroke Cinema.

FRIDAY JUNE 21

Suffolk Day.

Fish & Chips: Horham CC.

SATURDAY JUNE 22

Midsummer Bash: Midsummer BBQ, Coronation Hall, Wilby. Live music. £10 (388112 or alisonandlan5@btinternet.com).

SUNDAY JUNE 23

Music in the Gardens with Sam Coe & The Long Shadows: Helmingham Hall, 11am-6.30 pm. Gardens from 11am; bar 3pm; BBQ 4pm; music 4.30pm. Adults £7; children £3.50.

Aston Martin Owners Club: Mid Suffolk Light Railway Museum.

SATURDAY JUNE 29

Worlingworth Fete & Dog Show: noon-3pm.

Dance: Red Feather Club, band The Revolutionaires.

SUNDAY JUNE 30

Diesel Day: Mid Suffolk Light Railway Museum.

Save The Children Summer Lunch: For Children In Need, Eye (871264).

Americana Day: Red Feather Club Museum, 10am-4pm.

WEDNESDAY JULY 3

Redlingfield Coffee Caravan: Centre of village, 10am-noon.

THURSDAY JULY 4

Vinyl Lounge: Music & dance, The Bank Arts Centre, Eye, 7.30pm, £10 in advance, £12 on door.

FRIDAY JULY 5

Bar Meal: Horham CC.

Green Book: Hoxne Film Night.

SATURDAY JULY 6

Horham Bygones/Classic/Car Rally & BBQ.

Bedfield Village Fete: 2pm-5pm entry £1.50.

■ VENUES etc:

The Bank Arts Centre - Eye: The Bank, 2 Castle Street, Eye, IP23 7AN, 873495 & www.thebankeye.org. **Cinema at Eye:** Eye Community Centre, Magdalene St, IP23 7AJ, tickets Eye Pharmacy, The Handyman, or on door. Doors 7pm, film 7.30pm. £5 adult, £2.50 child up to 12. **Framlingham:** www.framlingham.com. **Helmingham Hall:** 01473 890799, events@helmingham.com, www.helmingham.com. **Horham & Athelington**

Community Centre: Karen, 384754. **Hoxne Film Nights:** 7.30pm, Hoxne Village Hall, Goldbrook, Hoxne, bar, popcorn & choc-ices available before & in the interval. Further info/booking: 668060 or www.hoxnevillagehall.co.uk. **Mid-Suffolk Light Railway,** Brockford Station, Wetheringsett, Suffolk, IP14 5PW, www.msrlr.org.uk, 01449 766899.

Museum of East Anglian Life, Stowmarket, enquiries@eastanglianlife.org.uk, 01449 612229. **Redlingfield village events,** 678835, pc@redlingfield.suffolk.gov.uk, www.redlingfield.suffolk.gov.uk.

Mid-Suffolk Showground & Stonham Barns: Stonham Barns, Pettaugh Road, Stonham Aspal, IP14 6AT, <http://stonham-barns.co.uk>.

Stradbroke Cinema: Stradbroke Community Centre, 7pm for 7.30 pm. Adults £5.50, 16 and under £3. Bar open, ice-creams in the interval. **Suffolk Owl Sanctuary,** Stonham Barns, 08456 807897, info@owl-help.org.uk, www.owl-help.org.uk. **Wingfield Barns,** 384505, enquiries@wingfieldbarns.com, www.wingfieldbarns.com. **95th Bomb Group**

Heritage Association/Red Feather Club, Coldhams Hill, Denham, IP21 5DG, www.95thbg-horham.com, enquiries@95thbg-horham.com.



Wilby School

- A warm and caring family atmosphere
- A child centred and flexible approach
- Excellent progress for all pupils
- Outstanding musical and expressive arts opportunities
- Outdoor learning and frequent trips
- 30 hours Pre-School Provision



**Dream big,
work hard**

For more information call 01379 384708 or visit www.wilbyprimary.org.uk
 Wilby CEVC Primary School, Brundish Road, Wilby, Suffolk, IP21 5LR

Simply Beautiful By Anne

*Weddings, Bridesmaids,
Ball Gowns, Curtains,
Cushions, Alterations
and much more*

Free Estimates Given



Magnolia House,
Wilby Rd, Stradbroke
Tel: 01379 384097
Mob: 07944 894757

WHAT'S ON

SUNDAY JULY 7

Rock 'n' Roll Record Hop: Occold Village Hall, 2pm-5pm, £5.50.

Music in the Gardens with Swing Machine Big Band: Helmingham Hall, 11am-7pm. Gardens from 11am; bar 3pm; BBQ 4pm; music 4.30pm. Adults £7; children £3.50.

Land Rover Day: Mid Suffolk Light Railway Museum.

SATURDAY JULY 13

Redlingfield Summer Fayre & BBQ: 3pm till midnight, Doorstep Green.

SUNDAY JULY 14

Steam Railway Day: Mid Suffolk Light Railway Museum.

THURSDAY JULY 18

Mary Queen of Scots: Stradbroke Cinema.

SATURDAY JULY 20

Fund-raising evening: Horham CC to raise funds to oppose chicken unit.

SUNDAY JULY 21

Steam Railway Day: Mid Suffolk Light Railway Museum.

FRIDAY JULY 26

Fish & Chips: Horham CC.

SATURDAY JULY 27

Stradbroke Village Show: 2-4pm, Stradbroke Village Hall.

Theresa Storch Duo: Live music, The Bank Arts Centre, Eye, 7.30pm, £10 in advance, £12 on door.

SUNDAY JULY 28

Public Open Day: Red Feather Club Museum, 10am-4pm.

Steam Railway Day: Mid Suffolk Light Railway Museum.

FRIDAY AUGUST 2

Arcelia: Live music, The Bank Arts Centre, Eye, 7.30pm, £10 in advance, £12 on door.

SUNDAY AUGUST 4

The Festival of Classic & Sports Cars:

Helmingham Hall, 10am-5pm. Adults £9; children 7 years & over £4; children under 7 free; family ticket (2 adults & 2 children) £22.

Steam Railway Day: Mid Suffolk Light Railway Museum.

WEDNESDAY AUGUST 7

Redlingfield Coffee Caravan: Centre of village, 10am-noon.

SATURDAY AUGUST 10

Stowmarket Strummers Ukulele

Band: Live music, The Bank Arts Centre, Eye, 7.45pm, £15 including light supper, dessert, tea/coffee.

SUNDAY AUGUST 11

Music in the Gardens with DixieMix Jazz Band: Helmingham Hall, 11am-7pm. Gardens from 11am, BBQ & bar from 4pm, music from 4.30pm-7pm. Adults £7; children £3.50.

Steam Railway Day: Mid Suffolk Light Railway Museum.

SUNDAY AUGUST 18

Steam Railway Day: Mid Suffolk Light Railway Museum.

SATURDAY AUGUST 24

Redlingfield Pub on the Green:

Doorstep Green, 6pm-late.

Outdoor Cinema – Bohemian

Rhapsody: Helmingham Hall, 6.30pm-11pm.

SUNDAY AUGUST 25

Public Open Day: Red Feather Club Museum, 10am-4pm.

Outdoor Cinema – Breakfast at Tiffany's: Helmingham Hall, 6.30pm-11pm.

SUNDAY AUGUST 25 & MONDAY AUGUST 26

Model Mania: Mid Suffolk Light Railway Museum.

SUNDAY SEPTEMBER 1

Redlingfield Produce Show: Doorstep Green.

■ REGULAR EVENTS:

MONDAYS: Coffee & Chat: Horham Baptist Church hall. 10am. No charge. Everyone welcome. Alan Hawes, 388330. **Ballroom dancing:** St Edmund's Hall, Hoxne, 7.30pm-9.30pm (for adults). Sandra Hartley, 01728 723887.

TUESDAYS: T Plus: Community Café with stalls, All Saint's Church, Thorndon every Tues, 10am-noon. **Bingo:** Thorndon Village Hall, 7.30pm every other Tues. 678178.

Debenham Historical Society: Regular lectures at Room 31, Debenham High School, 7.30pm, £3 per lecture, including a soft drink in the interval. Enquiries: Clive Cook 01728-861754. Non-members welcome to see what's on.

WEDNESDAYS: Coffee mornings & cyber cafe, every Wed, 10.30am-noon at Horham Old School. **Redlingfield & Occold WI,** 1st Wed of the month at 7.45pm, in Occold Village Hall. **Hoxon Hundred:** Summer dance-outs at local pubs. Winter practices. Ron Ross, 643563. Eye Country Market, every Wed 10am-11am, Eye Town Hall (closed Jan).

Social mornings: Horham Old School. 10.30am each Wed tea, coffee, cake, crafts, a chat and good company. Info from Christine (384168) or Pip (384370). Admission free - small charge for refreshments. Wingfield barns Midweek Movies : alternate Weds 7.30pm screening £5. For info 384505 or email enquiries@wingfieldbarns.com

THURSDAYS: Zumba: Worlingworth Community Centre, 7pm, Terri Cave, 01728 627756 & 07563534086.

FRIDAYS: Bingo: Stradbroke Community Centre, Wilby Road, 2nd Fri monthly. 7.30pm. Mary Ellis, 384642. Worlingworth Swan, live music, last Fri evening of month.

SUNDAYS: Public open days: Red Feather/95th Bomb Group Heritage Association & 95th BG Hospital Museum last Sun of month May-October inclusive,

Factory farming plans and

YOU MAY HAVE HEARD that two large factory farms are proposed for this area. One in Horham and the other in Southolt.

Both are for the production of broiler chickens – non egg-laying chickens, destined to be slaughtered for meat at five weeks old having been intensively-reared and fed up to be the

correct weight. The unit in Horham is designed to rear some 800,000 chickens in each five-week cycle, the one at Southolt will be larger with well over a million birds in each five-week cycle.

Hundreds of large articulated lorries will thunder through our villages – delivering food, taking the five-week-

■ **WOMEN'S TOUR ON YOUR DOORSTEP:** Suffolk will host the opening stage of the 2019 OVO Energy Women's Tour bicycle race on Monday June 10th, the fifth time that the race has visited the county. The county also becomes the first venue to be confirmed for the 2020 race, with the news that Suffolk County Council and East Suffolk Council will partner with event organisers SweetSpot Group in a two-year deal. And the opening stage between Beccles and Stowmarket could be going past your front door as it goes through Eye, Horham, Stradbroke & Wilby.

Mike Ager



Providing a
PROFESSIONAL
and caring service

**Susan Whymark
Funeral Service**

*Susan Whymark Funeral
Service is owned and run by
the Whymark Family.*

**Independent
Funeral Service serving
Eye, Harleston and
the surrounding areas**

**Telephone personally answered 24 hours a day
Eye 01379 871168 Harleston 01379 851253**

**www.susanwhymark.co.uk
email susan@susanwhymark.co.uk**

Chestnut House, 12 Progress Way,
Langton Green, Eye, Suffolk, IP23 7HU
And 31 Redenhall Road, Harleston, IP20 9HL



Redlingfield

old chickens to be slaughtered and delivering new baby chicks.

Issues to consider include flooding, pollution, water contamination – Redlingfield is downstream of Southolt so will get any run off, as well as biohazards, animal welfare, the impact on wildlife and the environment.

The impact will be awful. Redlingfield is working with other local parish councils to see how we best respond to these proposals.

Please do let us know what you think and what you would like to happen (pc@redlingfield.suffolk.gov.uk or 01379 678835).

Janet Norman-Philips

■ **NEW REEDING WOODS GROUP:** This spring the woodland is flourishing, the trees are coming into leaf, there is blossom in the hedgerows and cowslips along the rides and once again there are newts in the pond. Another newt surveying day was due to be held towards the end of May. It was hoped that once again Sue Morgan would help us with the survey. On the 15th June the New Reeding Woods Group will be putting on a woodcraft display at the Horham Fete. As well as log-splitting and wood-turning there will be a variety of bird feeders, pegs, stools and whistles for sale as the group demonstrate their woodworking skills. For information see the notice board at Pound Lane Wood, and to join please contact our secretary Peny Conway on 01379 870165.

Margaret Reeves



Cowhams

“For today's automotive demands”





Scan or visit
www.cowhams.co.uk
01379 388 999
enquiries@cowhams.co.uk

Busy bees in & out of school

WILBY SCHOOL continues to be a hive of activity both within the school and in our work with other organisations.

We continue to support The Alfie Project at Hartismere Place in Eye and also the Foxearth Nursing Home by visiting residents and playing music etc. We also work closely with a number of other schools sharing activity days, facilities and professional expertise. This term our headteacher was appointed a Leader in Local Education and as a result of this will be able to offer further help to leaders of schools in Norfolk and Suffolk.

The spring term at Wilby saw the school taking part in a wide range of sporting activity and claiming a number of medals – most notably in gymnastics, swimming and netball. Our swimmers are through to the regional finals in Bury in June!

March was a particularly busy month with all of Y2-6 performing on the stage at the Snape Maltings international concert hall as part of the Celebration of Schools' Music. Their stunning performance followed the soldiers of WW1 from factory and field to the horror of the trenches and our remembrance of them in modern times. Brought to life through costume, drama, music, sound effects

Parent and Toddler Group

NEW Free 'Soft Play' and crafty 'Do and Make' sessions for Toddlers and Pre-School pupils. Wilby School Hall. Every Every Thursday Term time - 10am-11.30am



Everyone welcome to come and join the fun !

For more information call us at 01379384708
or visit us at www.wilbyprimary.org.uk



and the wizardry of the lighting team at Snape their performance had a powerful effect on the audience. Brilliant, emotional and incredibly powerful were just some of the comments received.

Kingfisher Class visited Stow Saxon

Village as part of their topic on Saxons and Viking invasion and at the end of the Spring Term our Year 6 pupils went to London to visit the Houses of Parliament, the Science Museum and a variety of other famous landmarks. Later this month MP Dan Poulter will be visiting us in school and we hope to use some of the debating skills learnt about in the Houses of Parliament to challenge him over issues such as climate change and lack of funding for schools!

World Book Day focussed on the work of David Wiesener. The children and staff looked amazing dressed up as their favourite book characters.

FOWSA have been busy with a brilliant evening of Bingo fun in March, Easter Egg Hunts in April and a Pamper Evening. ***Roisin Wiseman***

Keeping your home running smoothly

Diss 01379 652764 www.watsonfuels.co.uk



D-Day veteran Ted Bootle

PAST STRADBROKE and District Royal British Legion branch president Ted Bootle was remembered at a recent meeting. Ted was a doughty WW2, RASC soldier, who was attached to 6th Airborne Division.

His role was to deliver ammo and supplies to the troops after landing on D-Day. He tore through the German lines, possibly a little lost in the chaos, with his lorry of food and ammo, to reach the Pegasus Bridge and Major Howard. He was a welcome sight to troops who had run out of 'bullets'.

Ted fought on in various locations, ending up in Palestine peace keeping,



until he was demobbed in 1947.

Alan King, the current president, who was a tank wireless operator at D-Day, and a fellow holder of the Légion d'honneur, paid tribute to Ted, who was 94, at the May branch meeting. Ted's funeral was on May 2nd. Ted was a good friend to the RBL and to Laxfield village. His ashes will be scattered at Laxfield at a future date.

The branch chairman, Bernard Mills, wished to sincerely thank Janet Fisk and her helpers in Horham, for all the fine work carried out as poppy organiser and collectors over many years. Is there a local volunteer who



Safe & Sound
Hygiene and Pest Control

Have you a problem with -

Rats, Mice, Moles, Wasps or Rabbits?

All typical Pests controlled.

Wood and Timber treatment is also available.

For ALL your Domestic / Commercial Pest Control.

No obligation – free survey/quotes.

Please call,

01379 788865 / 07809 226109 / 07518 731106

www.safeandsoundhygieneandpestcontrol.co.uk

remembered

would take up the role?

At the April meeting, ex-policeman Ben Mayne, now a WW2 historian, battlefield guide and freelance adviser and guide, spoke about his passion to keep alight the flame of Remembrance for a great grandfather he did not know and for others who died for this Country in WW1, WW2 and beyond. He believes in the importance of teaching future generations about the events of past wars and about those who were involved in those actions. He urged that future generations, might be encouraged to carry forward the 'Torch of Remembrance' and referred to the poem 'In Flanders Fields' by John McCrae: 'The torch; be yours to hold it high. If ye break faith with us who die, We shall not sleep.'

You are welcome to upcoming meetings: the speaker at The Royal Oak Laxfield at 7pm, June 13th is, Lucy Croft. Nat West Bank on 'Scams'; the speaker at 7pm on July 11th at Stradbroke Old Court House, is Dr John Wyke Consultant Gastroenterologist at Ipswich Hospital on 'The Digestive Disorders Foundation Suffolk, and the Bowel Cancer Screening Program' and September 12th, 7pm at Stradbroke, Geoffrey Robinson is speaking about Buffalo Bill's 1903 visit to East Anglia. Contact 01379 388602 to save a ticket. Leave name and contact number for return confirmation.

Rosemary Warne

Scotts Hall Builders

All aspects of building,
plumbing & heating
and decorating.

Steve

07950 857387



**Willow Tree
Window
Cleaning**

**I AM A DEDICATED AND EXPERIENCED
WINDOW CLEANER USING THE BEST
TRADITIONAL METHODS TO CLEAN
YOUR WINDOWS TO THE HIGHEST
STANDARD**

**TRADITIONAL CLEANING SERVICES
INCLUDING INTERIORS AND EXTERIORS,
GUTTERS, SOFFITS, FASCIAS,
CONSERVATORY ROOFS AND MORE**



**CALL 07927 273466 OR EMAIL
WILLOWTREEWINDOWCLEANING@GMAIL.COM
FOR A NO OBLIGATION QUOTE**

Diversions, cone jungles

I ALWAYS SAW DRIVING AS A functional thing, to be endured as means to an end. It's only function was getting you to your desired destination. I saw cars in very much the same way, the more reliable and cheaper to run the better. I'm certainly no petrol-head.

As a youth this relaxed attitude to cars caused me to be the only male non-invite to a tenth birthday party at my primary school. I told a car obsessed school acquaintance he may be naive to have this obsession for the above reasons. According to popular opinion the days after this party my opinions on the role of motor vehicles in our society was a major part of me

not being included in the group for this coming together for cake and fizzy.

My views may have slightly liberalised in 40 or so years but given what I have seen in the last few years how can people enjoy travelling on our roads and railways. It is a necessity to be endured.

Early in April on a rare trip to watch Ipswich Town lose in the depressing 2018-19 football season I encountered this on a drive from Redlingfield to our county town. It was just after midday on a Wednesday.

One set of traffic lights and a two minute wait, followed by another delay whilst workmen were setting up another set about a mile later. Then I

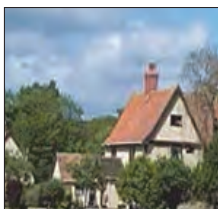
01728 628233

AH
Athelington Hall



Cheeky Porker Hog Roast

Our Hog roasts can be tailored to any occasion feeding between 60-250 people. Slow cooked here for 10+ hours, just wait until you try our crackling!



Log Cabin Holidays

Are you looking to get away but don't want to travel too far? Come and enjoy a well earned break in a luxury lodge with your own private hot tub nestled away in the tranquil countryside at Athelington Hall.

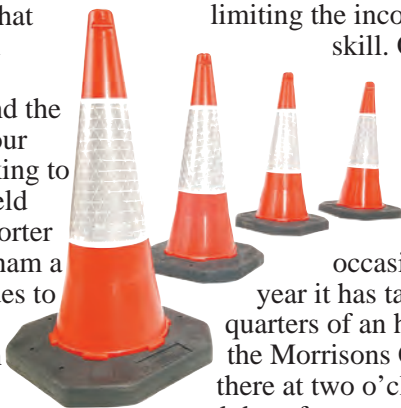
Athelington Hall Horham Eye Suffolk IP21 SEJ
www.athelingtonhall.co.uk peter@athelingtonhall.co.uk

and replacement buses

got into Debenham, the town that allows street parking for speed reduction and traffic calming purposes. I get to Crowfield and the road is closed so I have to detour through Pettaugh and Ashbocking to go into town through Westerfield instead of the preferred and shorter Henley route? Then in Witlesham a fellow road user in a van decides to reverse out blindly in front of me to test my abilities to do an emergency stop and express spontaneous expletives.

I drive around the Portman Road car park and eventually find a space. Thank goodness it is not 'vehicle identification' orientated or card payment only ... yet. This is all before the trip to Brentford, a venue where the previous season we had taken forty-five minutes to do the last mile and a half because of delays caused by a broken down vehicle. The stressful or frustrating part of the day should be the football – another abject performance and 2-0 defeat – but that was light relief!

I know this was an exceptionally bad journey but I don't remember travel being like this. Recently we have had a lot of '15-minute' delays whilst tree branches are removed or traffic lights on local roads with no work going on at that time. On my way down the A140 at night I'm regularly detoured off because of men at work. The problem is the traffic levels mean our roads always need work done and that means delays but balancing that with



limiting the inconvenience is the skill. One extra set of lights in Diss sees traffic back up beyond the golf course and on two occasions in the last year it has taken three quarters of an hour to get to the Morrisons Car Park from there at two o'clock on a weekday afternoon.

Travelling on railways was not always fun in the 80s and 90s but now you have so many different types of ticket you never know whether it's valid. I used to get detoured via changing at Ely to get to Cambridge or trains were cancelled but there seems to be so much more of this now. The phrase 'replacement bus service' is part of the national psyche and if you expect to travel on a weekend from Ipswich to Peterborough or Diss to London on a straight-through train, well good luck my friend. Safety evaluations and upgrade work will always be taking place on traditional leisure-time journeys.

I guess my problem is that I used to work days and drive mostly in evenings and at night. I now do the opposite. People will say daytime travel has always had these problems and I just didn't realise the scale of it. I say when was driving ever fun. It is a means to an end and one you endure.

Ian Crane

Fond farewell to poet Les

IS THE NAME ANDREW Barton Patterson familiar to you? Perhaps not although I am certain that something he wrote will be familiar as he is the man who wrote the words to 'Waltzing Matilda', Australia's unofficial national anthem.

Somebody else whose name might not be familiar to you is Les Murray which is a pity as he wrote poetry which is as straightforward and Australian as 'Waltzing Matilda' is.

I'm thinking about him at the moment because, at the time of writing, I have just heard that he died a few days ago at the end of April at the age of 80 and will be greatly missed – a sad loss of a great man.

He was born in 1938 at a place called Nabiac in New South Wales on a dairy farm and had a country childhood of poverty and hardship – often having to go barefoot to school.

He was nevertheless a good scholar and won a place at Sydney University where he read Modern Languages after which he travelled widely and for some periods lived abroad, but he never forgot his "wild colonial boy"

roots and wrote poetry throughout his adult years.

His was not groundbreaking stuff but solid, well considered and carefully put together poetry, usually about quite ordinary things and experiences which, although the subject may have been everyday, was never trite.

His work is considered to be both modern and traditional and is often put in the same bracket as modern Scots poets such as Hugh MacDiamid and Sorley MacClean.

It is common for Australian literary types to come to Britain to make their names. This Les Murray never did preferring, after his stint of globe-trotting, to settle down back in Oz and just get on with it. One of those who has made their home here and whom I have previously written about is Clive James.

His poetry is in some ways similar to Murray's and he is of a similar age but while the former seems to have died after a short illness, James has for some years been suffering a chronic and ultimately fatal condition and has written about it in a collection titled

■ **A BIG THANK YOU FROM KELLY:** I would just like to say a big thank you to everyone, for all your cards, good wishes, text messages while I was in Addenbrooke's Hospital after my accident. It was greatly appreciated. It helped me so much as I so missed my home, all my animals and village life. Also thank you to everyone who so generously donated to me when I got home, and also coming to see me. It meant so much. So many thanks to you all. I also want to say a big thank you to Katie for all she did for me. Last, but not least, a huge thank you to Janet and Mike for all they have done for me in hospital and home. Supplying me with books, which I received in hospital and at home (I can set up a library), they meant so much to me. And thank you both for your generosity. I'm not alone in saying we don't know what we would do without you both in our lovely village of Redlingfield.

Kelly Hawes

Murray

‘Sentenced to Life’. The last verse of one of these poems is very moving.

What is it worth, then, this insane last phase

When everything about you goes downhill?

This much: you get to see the cosmos blaze

And feel its grandeur, even against your will,

*As it reminds you, just by being there,
That it's here we live or else nowhere.*

Murray's is maybe more homely writing, nearly always from direct experience. This poem of his is a plain man reflecting his, possibly inebriated, thoughts arriving home by moonlight:

*Shadowy kangaroos moved off
as we drove into the top paddock
coming home from a wedding
under a midnight curd sky
then his full face cleared
Moon man, the first birth ever
who still massages his mother
and sends her light for his having
been born fully grown
Had Earth fully healed from that labour*

no small births could have happened.

His physical presence if nothing else will be missed. From young adulthood he appears in photos as a balding roly-poly giant of a man always sporting a ready grin.

One image in particular expresses this – it is of him receiving the Queen's Medal for Poetry from the Queen in person in it this big man is looking down at the Queen and she is looking up at him and they are both laughing like drains! **Neville Butcher**

We're Outstanding!
"Children flourish and thrive in the highly stimulating and enabling environment" Ofsted May 2017

Ofsted
Outstanding Provider

OCCOLD PRESCHOOL

We are open every week day during school term-time, from 8.00am to 4.30pm

Breakfast & After-school sessions every day

Affordable fees - and 30 hours 'free-funded' places for 2+ year olds

Boogie-Mites Music and Dance Sessions Every Tuesday at 10.00am

Lovely purpose-built room, with secure outside play area

FREE settling-in sessions

Call us on 01379 678397 to find out more or, to arrange a visit - we would love to hear from you!

www.occoldpreschool.onesuffolk.net OR follow us on Facebook

OCCOLD PRESCHOOL based at Occold Village Hall, Occold, IP23 7JY



Rose Cottage B & B

01379 384680

www.rosecottagebandbsuffolk.co.uk

enquiries@rosecottagebandbsuffolk.co.uk

The Street, Horham, Eye, Suffolk, IP21SDX

DR DAN POULTER, YOUR LOCAL MP

IN RECENT MONTHS, THE challenges facing the Norfolk and Suffolk Mental Health Trust have been well publicised.

Mental health services in our area need to improve; patients and their families deserve no less.

Since the Trust was put into crisis measures (Special Measures), I have worked to ensure that health bosses are held to account and improvements made quickly and effectively.

As a practising NHS mental-health doctor, I am uniquely placed to be a critical friend of the Trust as it makes these changes, attending regular meetings with ministers and Clinical Commissioning Groups (the people with the money that funds health services) in Norfolk and Suffolk, as well as with the Trust itself.

Things do appear to be (slowly) improving.

It is encouraging to see the new leadership at the Trust, with new chair, Marie Gabriel, and chief executive, Professor Jonathan Warren, joining from the East London Trust, one of the most successful in the country. Their expertise will be invaluable.

There will also be more funding, with an extra £5.7m for psychological (talking) therapies, long-term mental health conditions such as schizophrenia, crisis resolution and early intervention.

The Trust is also working with local charities to improve resources relating to suicide prevention and dementia. This represents a 6.3% increase in mental health investment locally, far exceeding the national Mental Health Investment Standard.

I am optimistic that these changes will help deliver substantially-improved care for patients in Suffolk.

There has been a lot of talk about restructuring: for me, this is unwanted and irrelevant. What matters is the quality of the services.

I fear that splitting the Trust into three smaller units could create more problems than it solves, as the focus would be on restructuring rather than on improving the care and support for patients.

I hope that our local health leaders agree.

From my medical perspective, I understand that mental health is one of the biggest challenges facing Norfolk and Suffolk. There is much to do, but I am confident that the Trust can and will be turned around.

I am pleased to be playing my part, holding ministers to account and providing a voice for those suffering from mental health issues locally.

As a practising NHS doctor in the mental health field, I am in the unique position to be able to stand up for the needs of mental-health patients in Suffolk, and I shall continue to do so.

Dr Dan Poulter, MP, I hold regular constituency advice surgeries to help people who have problems. If you think that I may be able to help you, contact 01728 685148, or email me via www.drdanielpoulter.com. For more information please visit www.drdanielpoulter.com

THE REVEREND REFLECTS ... HERE WE GO AGAIN ...



IN APRIL, A SOLITARY young man drove from Hertfordshire and hit a tree on one of our sleepy country roads; there is very little evidence to suggest it was accidental. For many of us, it brought back memories of J Leader's death four years ago or memories of other people we know who've committed suicide; indeed here we go again.

Sometimes it seems that there's nothing left to say, and what can be said is puerile compared to the enormity of what has happened. But I'll still try. Something old and then something new.

Firstly, there is a common misunderstanding that the church is very harsh on people who commit suicide. After all, the Bible says that people who kill themselves can't enter the kingdom of heaven.

Yes that is indeed in the Bible, worse than that it is in the New Testament so the 'Jesus changes things' card is weak. But what I think is weak is Bible scholarship; that passage was written as a time of great persecution and the prospect of killing yourself and going to heaven was very tempting, the allure of false martyrdom as it were.

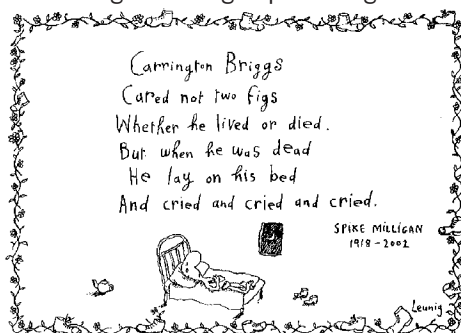
Times change though, and for over a hundred years the Church of England has held that someone of sound mind who kills themselves can't have a church funeral.

This suggests that the exception is a criminal seeking to avoid justice, but otherwise I'm sure you can see the huge

loophole in the law (there's two actually).

Times do indeed change, and the most recent revision, although technical, is actually even more pastoral.

Times change, and that's where something new comes in; it's from that much neglected sage Spike Milligan.



Which is something my counsellor passed onto me, along with the observation that he thought most people who contemplated suicide only wanted to be dead for a couple of weeks.

This reminded me of something that a very close friend of J's had said at the time; that a bout of depression passes (eventually) and then you shake yourself down and wonder what that was all about.

Sadly for the young man on the country road, he won't have that chance. I know from experience that it can take a very long time for depression to lift, or to draw upon Sheryl Crow ... 'every day is a winding road ... I get a little bit closer'.

In the meantime, all of us, must do all that we can to help those who are stricken. It is time to stop saying, 'here we go again'.

Revd Michael Womack is rector of the Hoxne Benefice
(hoxnebenefice@gmail.com or 388889).

CHURCH & INFORMATION

■ CHURCH OF ENGLAND SERVICES etc:

- JUNE 2** 09.30am HC, **Redlingfield.**
9 09.30am BCP HC, **Horham;**
 11.15am Benefice Communion,
Denham.
16 09.30am HC, **Athelington.**
23 10am MP, **Redlingfield.**
30 11.15am Benefice Communion,
Athelington.
- JULY 7** 09.30am HC, **Redlingfield.**
14 09.30am BCP HC, **Horham;**
 11.15am Benefice Communion,
Denham.
21 09.30am HC, **Athelington**
28 10am MP, **Redlingfield.**
- AUG 4** 09.30am HC, **Redlingfield.**
11 09.30am BCP HC, **Horham;**
 11.15am Benefice Communion,
Denham.
18 09.30am HC, **Athelington.**
25 10am MP, **Redlingfield.**

HC = Holy Communion,
 MP = Morning Prayer, BCP = Book of
 Common Prayer

Rev Michael Womack: Rector of the
 Churches of the Hoxne Benefice serving
 the communities of Athelington, Denham,
 Horham, Hoxne, Redlingfield, Syleham and
 Wingfield. St Andrew's House, Vicarage
 Road, Wingfield, Diss, Suffolk, IP21 5RB
 (01379-388889)

Enquiries: Daphne Harvey, St Mary,
 Horham (384216); Colin Palmer, St Peter,
 Athelington (01728 628747); Hazel Abbott,
 St Andrew, Redlingfield (678217). Services
 for all churches in the benefice are on
 notice boards. A monthly benefice
 newsletter is available in the churches.
 Email hoxnebenefice@gmail.com for your
 copy or see www.redlingfield.suffolk.gov.uk.

THURSDAY 1 AUGUST - 6pm at Hoxne the annual Lammass service in support of The
 Addington Fund for farmers, followed by hog roast. All welcome to hear and support the
 work of this charity that has its roots in Suffolk. It is hoped to include a tractor parade.

**Rates for adverts in four issues distributed to approximately 300 homes and
 businesses in Horham, Athelington, Redlingfield and surrounds are:**

- 1/8 page £9** (42.5mm deep, 60mm across)
1/6 page £12 (60mm deep, 60mm across)
1/3 page £23.50 (60mm deep, 125mm across)
1/4 page £17.50 (90mm deep, 60mm across)
1/2 page £35 (90mm deep, 125mm across)
A whole page £70

Athelington, Horham & Redlingfield News cannot be held responsible for the quality of
 goods or services advertised in the magazine. This disclaimer is inserted purely for
 legal/technical reasons and can in no way be construed as implying criticism of any
 supplier of goods or services.

**Contact editors: Evelyn Adey on evelyn.adey@btinternet.com or 01728 628428 at Ivy
 House Barn, Southolt Road, Athelington, IP21 5EL; or Mike Ager on mike@gn.apc.org
 or 01379 678835 at Hidcote Lodge, Mill Road, Redlingfield, IP23 7QU.**

Printed by Tuddenham Press Ltd, Unit 4, Hill Farm Barns, Ashbocking Road,
 Henley, Ipswich, IP6 0SA, 01473 785154, info@tuddenhampress.co.uk.

EAST ANGLIA GAS



01449 711607
01379 644 220
07432 090 220

No Hassle

No hidden costs

Just great service

Free delivery 7 days

Exchange any bottle

**Special prices when mentioning
this magazine and advert**

47kg Bottle £55

19kg Bottle £30

18kg Forklift £30

Visit our website for more details
www.eastangliagas.co.uk



EAST ANGLIA GAS

**Long Meadow, Low Road,
Bressingham, IP22 5XN**

**New retail outlet: Bellflower Garden Centre,
Stonham Barns, Stonham Aspal, IP14 6AT.**



Barley Green Garage

Laxfield Road, Stradbroke, IP21 5JT

Telephone 01379 388 947

www.barleygreengarage.com

After hours call Julian 07733 118100

Servicing • Repairs • Tyres • Exhausts • Batteries • Air-Con • MOT Testing

Servicing, Repairs & MOTs



Welding and Diagnostics



Air-con servicing from £20



Coal, logs & kindling



Parking sensors & Tow-bars



LPG Auto-gas filling station



Courtesy cars available



Free local collection & delivery