



# ***Athelington, Horham & Redlingfield* NEWS**

**WINTER 2024-25  
Issue No. 67**

**MERRY CHRISTMAS & HAPPY NEW YEAR**

# **SPURLING & REMBLANCE**



**MOTOR ENGINEERS  
MOT TEST CENTRE**



**Service and repairs to all cars,  
light commercial and 4x4s**

**Specialists in vehicle diagnostics**

**Free local collection and delivery**

**Courtesy car available**

**Prompt attention assured**

**Competitive rates**

**(01379) 384689**

**Open 8.00am-5.30pm Mon-Fri, 8am-noon Saturdays**

**Barley Hall, Laxfield Road, Stradbroke, IP21 5NQ**

**on the B1117 - 1¾ mile outside Stradbroke, towards Laxfield**



# **■ HORHAM POST OFFICE & SHOP:**

On Tuesday 19th November Irene & David Spall called it a day at Horham Post Office, 57 years to the day that they first stood behind the counter. A big thank you to them and their staff for not only giving the village a shop & PO but also a social hub.

A big thank you to all our deliverers, contributors and advertisers & in particular Jan for tech support & Midge Gibbons for proofreading. Any errors are mine.

*Mike Ager*

**Front page picture: The Aurora Borealis by Zara Edwards at Toll Barn, Redlingfield.**

**If you would like to advertise or contribute to the magazine or have an event or organisation you would like featured contact editor:**

**Mike Ager on [mike@gn.apc.org](mailto:mike@gn.apc.org) or 01379 678835 at Hidcote Lodge, Mill Road, Redlingfield, IP23 7QU.**



**Deadlines for adverts & editorial:**  
**Spring issue (Mar, April & May)**  
**Final deadline February 14**

**Summer issue (June, July & Aug)**  
**Final deadline May 14**

**Autumn issue (Sept, Oct & Nov)**  
**Final deadline August 14**

**Winter issue (Dec, Jan & Feb)**  
**Final deadline November 14**



Printed by Seale Print, The Quadrangle Centre, The Drift, Nacton Road, Ipswich, IP3 9QR. 01473 276010, [www.pjprint.com](http://www.pjprint.com).

**Athelington, Horham & Redlingfield News was founded in 2008 by Evelyn Adey and Mike Ager.**

# A good summer and then the budget ...

**W**inter draws on but it has been a very kind start. Memories of summer are long gone but the warm sunny weather, which arrived as the school year ended, gave both holiday makers and farmers a very good August. At last after 12 months the land dried out, cracks appeared in the clay soil and Mother Nature helped repair the soil structure. The benefit of that was later evident in the drilling of our autumn-sown crops and continued with a spell of dull dry weather from a blocking high-pressure system. The Germans even have a special word for this, it is *dunkelflaute*. Even though this meant poor electricity generation from both wind turbines and solar panels, it was a good opportunity for hot-air ballooning and viewing the northern lights. With excellent conditions for

the sugar beet harvest, there was even a chance of bumping into a happy farmer until Rachel Reeves' Budget came along.

**B**ut the insects had been given a real boost and seeing bugs and bees stuck to the car windscreen and radiator this year was a reminder of the good old days. Nevertheless, the Govt advisers are now worried about the lack of insect pollinators in our farms and gardens which is the reason why you can see thousands of acres of flower species established in our fields instead of the usual crops. Depending on your point of view, they are either a colourful floral landscape or a weedy eyesore. I was chatting to a lady at Be Well Barn who praised the lovely blue-flowering Phacelia by the roadside, but I had to be honest and

**The handsome  
"Oak Eggar".**



**A Four-spotted  
chaser dragonfly  
dries its wings in  
the garden.**





## WASH FARM - WILDLIFE

### *Trevor Edwards' latest Wash Farm Wildlife*

tell her they were on Nick Johnstone's land and not ours.

As well as dragonflies and damselflies, moths have become more evident and a handsome example called an Oak Eggar settled one day on the desk in the farm office. With a furry head, antennae and orange colouring, it's got the appearance of a miniature Highland cow. It is Britain's largest day-flying moth with a wingspan up to 3 inches and away from its normal habitat of heathland it made a welcome visitor to Redlingfield. Lexi Edwards, my youngest grandchild, has an early liking for nature and, as she shows in the photograph, the young lady is very happy to handle an oddly named moth. This one is called Old Lady.

Sparrow hawks featured in the summer edition of the magazine and have become increasingly visible on the farm. And so are kestrels, which follow the baler as gulls follow the plough. Aware that field mice live under the straw swathe from the combine, kestrels are clever enough to track the baler and swoop down on mice which dash about with nowhere to go.

*Continued on page 4.*



**Lexi with the  
Old Lady.**

### **Hedge- hopping.**



## WILDLIFE - WASH FARM

*Continued from page 3.*

A Debenham photographer named Tyrone Holman has kindly shared some superb photos with me and there is none better than his kestrel with an in-flight catch of a dragonfly. I think it shows that the photographer and the agile falcon are equally highly skilled! The photo of the Four Spotted chaser completes the summer of insects, this one resting on the vegetable garden wire netting.



A farm student from Uganda, Andrew Nuwamanya, has joined the turkey unit staff as a start to making his way in this country and he was our house guest for two weeks until his accommodation became available in Beddingfield. We learned much about his country and his deeply religious upbringing, his love of the English language and the value that he and his people place on education. We shared the story that education can be likened to an apple tree.

Examination success is the fruit at the end of the journey but can only be produced by looking after the whole tree throughout its life. Andrew is fortunate to be with us in the harvest season of both farm and garden and he showed a great appreciation of Anita's blackberry and apple crumble. As a member of the Anglican church, his enthusiasm for our St Andrews' church was tempered by the poor attendance by me and others as well.



**HANDYMAN**  
INDOOR & OUTDOOR JOBS  
PLUS PROFESSIONAL  
WINDOW CLEANING  
& PRESSURE WASHING

0787 6512815 or 0784 7874999  
mpcook123@outlook.com  
www.cookspressurewashing.co.uk

**Domestic,  
Agricultural,  
& Commercial  
Pressure Washing  
& Window Cleaning**



## WASH FARM

they are not everyone's favourite and have become a bit lazy and inactive in public parks. More to my liking was a large flock of linnets the next day on the Top Road, they numbered a score or more and

**Feed time agility  
by the Kestrel by  
Tyrone Holman.**

*Tyrone Holman*

Canada geese were abundant on a field in Garboldisham in September, about 200 grazing on harvest regrowth, and returning from my camera repair in Watton I had time to stop and watch them. Introduced wild from North America to grace stately home parks in the 18th century,

were busy hopping from a hedge to a roadside puddle.

Two caterpillars on the ground watched a butterfly pass overhead and one said to the other: "You'll never get me up there in one of those things." ■

# Optimal Heating

Father & Son Team

With over 30 years experience

## Specialist Heating Engineers

Oil, Natural Gas & LPG Servicing and Repairs



**Tel: 01728 628687**  
**Mobile: 07806 660399**







# Exciting outdoor autumn

**H**ello Everyone! We started autumn with some exciting news. Henry was amongst six finalists for the National Biodiversity Network Young Person's Award! He was shortlisted for his efforts and work in conservation, at home and at school, and for his continued contribution to the Suffolk Wildlife Trust Youth Board. At just 13, to be recognised at a national level for his efforts in conservation makes us all extremely proud.

During half term, we had a visit from Rick Double at Hospital Radio Ipswich.

Rick does the Sunday morning breakfast show and has a weekly 'Nature Watch' slot. He has read out Henry's poem, 'Just a Tree' a couple of times during Nature Watch and often mentions the work of the SWTYB. It was a pleasure to welcome Rick and his wife, Claire to Colnet Conservation and show them our meadows and re-wilding projects. Rick also interviewed Henry and they chatted about the Youth Board, Henry's work on the school Eco Council and of course, Henry read his poem.



**WILBY PRIMARY**  
**PRE-SCHOOL FOR**  
**(3-4 YRS)**

**Play-based learning**


**Creative Curriculum**

**Outdoor and Forest Schools play**

**Join the fun!**

For More Information:  
[www.wilbyprimary.com](http://www.wilbyprimary.com) email: [admin@wilby.suffolk.sch.uk](mailto:admin@wilby.suffolk.sch.uk) or call 01379 384708  
Individual school school tours can be organised on request

**Come and find out more!**







***This page: Nuthatch (top) & Bearded Reedling RSPB Minsmere; & Henry, Arthur & Edward offer Free Trees!.***

This interview was then broadcast as a special edition of Nature Watch, during the following Sunday. Thomas Mills High School also wrote a lovely article about Henry's recent achievements on their website. Please do visit the site and have a read through. There is also a link to the radio show if you would like to have a listen. (<https://thomasmills.suffolk.sch.uk/>).

We also paid another visit to RSPB Minsmere during half term, where the Waveney Bird Group were doing another ringing demonstration. We got up close to a pair of Bearded Reedlings, Lesser Redpoll and a Nuthatch.

At home we have been very busy again with our sapling trees! We have planted a few different ones so far this season including Rowan and Wych elm. Some of you will have also received a visit from us with a selection of free trees – thank you to those of you that have selected some to plant in your gardens. One recent Saturday, we also set up a 'free trees' stall on our driveway, so passers-by had the opportunity to stop and select a tree (or more) for their garden. We do still have a few sapling available, so if anyone would like perhaps a young Oak for their garden or a Hazel to add to their hedgerow, please email Mum, Sarah and she will be able to help. ([sarahcolnet@outlook.com](mailto:sarahcolnet@outlook.com)).

*Continued on page 8*



### *Continued from page 7*

On the meadow, we've been walking our pathways and watching so many birds enjoying our fruitful hedgerows. The Redwing are particularly abundant, and we have noticed a large increase in Blackbirds too. It is so important to let hedgerows establish and provide food for our winter visitors. They also provide protection, nesting and roosting sites and wildlife corridors, linking different habitats and allowing wildlife to pass through. Cutting them every year and keeping them small means that they provide very little. Some conservation bodies recommend leaving hedgerows for three to six years between cuts, in areas where visibility is not a concern. This gives them a chance to establish and provide so much for wildlife.

Autumn is the best time to go looking for fungi. We've been exploring our woodlands and meadows and have found many different types. One of our favourites is 'Candlesnuff Fungus' which grows on rotting wood. We also get a lot of 'Jelly Ear' growing on our Elder Trees. Did you know that

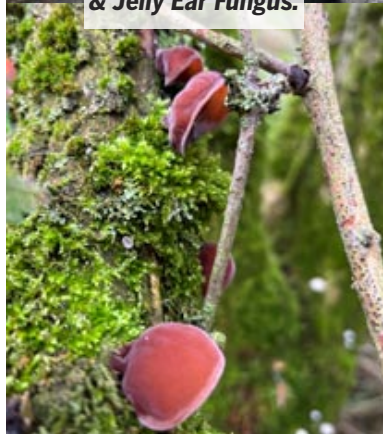
there are around 15,000 species of Fungi in the UK? That's pretty amazing! They also play an extremely important role in our ecosystem. Fungi have the ability to transform nutrients in a way that makes them available for plants. Some fungi are also decomposers, which means that they break down plant and animal debris, which then increases the nutrients in the soil. Together, plants and fungi perform a process called soil carbon sequestration, which captures carbon from the atmosphere and stores it in the soil for decades, if not hundreds of years. This process improves soil fertility and can help reduce the excess carbon that we are putting into the atmosphere.

When you're next out for a walk, please have a look around and see how many

different types of fungi you can spot, some are tiny, some are brightly coloured, some grow within a few hours and disappear just as quickly!

We wish everyone a very Merry Christmas and a Happy New Year.

*From Henry, Arthur & Edward,  
Colnet Conservation*







be well barn

# Christmas F A I R

11 - 3 pm

Sunday 1st December

Don't miss the wonderful selection of crafts from our local businesses,  
along with plenty of mulled wine & refreshments to keep you going!

The Hedgelayers Wife Ceramics

Blackbrook Interiors

Kelvin P Decoy Birds

Dorien Illustrator

Blush Thistle Floristry

Adnams

Tropic

Pooch Pupcakes

A Pane in the Glass

Orchard End Crafts

Kelly's Crafty Corner

Kay Lacey Watercolours

Debra Pritchard Antiques & Interiors

and many more!

[hello@bewellbarn.co.uk](mailto:hello@bewellbarn.co.uk) • 01379 831 565

Church Road, Redlingfield, IP23 7QP.





## Ian's Private Hire

For all your taxi needs

---

Local/Long journeys  
Days/Nights out  
Airports/Cruise terminals

---

[www.iansprivatehire.com](http://www.iansprivatehire.com)  
[iansprivatehire@gmail.com](mailto:iansprivatehire@gmail.com)  
Phone: 07825 001270

## *Simply Beautiful By Anne*

*Weddings, Bridesmaids,  
Ball Gowns, Curtains,  
Cushions, Alterations  
and much more  
Free Estimates Given*



*Magnolia House,  
Wilby Rd, Stradbroke  
Tel: 01379 384097  
Mob: 07944 894757*

## WILDLIFE - NEW READING WOODS GROUP

# 'Mists and

Autumn is the "season of mists and mellow fruitfulness" and Pound Lane Wood was turning colour and peaceful. The Guelder rose is glowing and hung with vibrant berries. The field maples are a vibrant gold with the leaves falling fast around them. There is fruit still on the medlar and on the meadow one lone buttercup was still in flower, a reminder of summer past.

Climate change is causing autumn days to be warmer. Trees respond to a fall in the day temperature to start to change leaf colour. Autumn colour change is coming later with the mild weather. The dry and hot summers we have experienced recently can also cause stress to the trees, leading to shorter and less colourful autumn displays.

As I walked around the pond, I saw a Robin's pincushion on a dog rose stem. It looks like a mossy clump around the stem and has a hard central core. Earlier it would have been a red colour. They are caused by the larvae of the gall wasp. The larvae feed on the gall over the winter and emerge as



**Fungi in Pound  
Lane Wood.**

# mellow fruitfulness'

adults in spring. The gall causes very little harm to the rose.

On the ground, in the grass and on fallen wood and amongst the leaf litter I found a large variety of fungi. The colours and shapes vary but they are all recycling the dead wood and leaves into nutrients that will benefit them and the plants around them.

● If you are interested in joining the New Reeding Woods Group and getting hands on experience of improving our local environment and enjoying outdoor activities, please contact our secretary Penny Conway on 07495 875299.



**0% Finance Available**

**Making Luxury Affordable**

**Wood Flooring  
Amtico  
Karndean  
Carpets  
Sisal  
Runners**

**Contact us today to transform your space**



**Visit our new showroom -  
19 Church Street, Eye, IP23 7BD**

**T: 01379 870190**

**E: [info@eyeflooring.co.uk](mailto:info@eyeflooring.co.uk)**

**W: [www.eyeflooring.co.uk](http://www.eyeflooring.co.uk)**







# Getting

If you haven't yet discovered the delights of our Wednesday coffee mornings then please come along to enjoy the cosy, welcoming atmosphere of the Old School. You will enjoy excellent coffee or tea, lovely cakes and savouries, and of course, delightful company.

We've enjoyed the lovely autumn weather; both the coffee morning customers and Sunday bar visitors have enjoyed the garden as the leaves change colour and before the autumn chill sets in. Thank you to all the volunteers who keep the building and garden tidy, help serve and wash up and of course those who provide cakes and savouries for the coffee morning.

In the run up to Christmas we will be running a raffle, we also have local



**WILBY TODDLERS (0-4YRS)**

**'COME AND PLAY'**

**TUESDAY 9-10.15 AM**

Refreshments and snacks provided  
Group runs Term-Time only

First session

5th November 2024



Play-based  
learning



Arts and crafts



Outdoor  
and  
Forest  
Schools  
play

**Join the fun!**



For More Information:

[www.wilbyprimary.com](http://www.wilbyprimary.com) email: [admin@wilby.suffolk.sch.uk](mailto:admin@wilby.suffolk.sch.uk) or

call 01379 384708

Individual school school tours can be organised on request



Bring your wellies and  
outdoor clothing!





# ready for Christmas

crafts for sale. Do come and look if you need a few gift ideas.

The Old School musicians will be having their Christmas music session on Monday December 9th from around 7.30pm. You are all invited to come and enjoy the music and to bring a plate of something seasonal for a bring and share supper.

Coffee morning is every Wednesday 10.30am-noon but not on Christmas day or New Year's Day.

The Bar is open every Sunday from noon to 5pm and on Christmas Day from noon to 3pm.

Happy Christmas to you all!

*Horham and Athelington Village  
Hall Committee*



## Dan To Earth Electrical

[dantoearthelectrical.co.uk](http://dantoearthelectrical.co.uk)

Danny Lamb  
Electrician

07756 204 354

Horham Suffolk  
[danlamb@live.co.uk](mailto:danlamb@live.co.uk)

01379 384 889

# Fond farewells for four gents

This time of remembrance has been all the sadder, having lost four gentlemen of Horham, Brian Chapman, Alan Johnson, Rod Tyrrell and Ted Harvey. It was bittersweet, and a privilege to see so many people gather together in Horham & Athelington Community Centre to say goodbye and share

stories at their wakes.

The Craft Fair, Harvest Supper with Conker contest and the Children's Halloween Party were all very successful. And we look forward to Open Mic Nights on the second Saturday of the month.

The Minimalist Indoor Fireworks Display was on Wednesday 6th

November, thank you to David Whatling for the idea, Neil and Maryann for refreshments, and Jamie Moyes and Vicky who provided the "sparks".

On Saturday 7th December, we have a Christmas Party, £3 per child. Book with Kay 074964 87629. There will be Christmas crafts, present & visit from Santa! Cash only bar.

On Saturday 14th December we have a Christmas Buffet, 7.30 for 8pm, £15 per head, pre-book with payment in advance please (ring Karen 07775672220). Music will be by Matt Wisbey & the caterer is Polly Reed from Wilby, early booking advised. We will also

  
**Susan Whymark  
Funeral Service Ltd**

Independent and Family Run

*Serving Eye, Harleston, Diss and the surrounding areas since 2004*

We offer a range of services to suit your individual needs

- Funerals tailored to your needs and budget
- Full estimates given at time of arrangement
- Pre-Paid Funeral Plans available
- Direct Cremations
- Support Groups
- Memorials

We provide an efficient but friendly service through our professionally qualified staff

- Chestnut House, 12 Progress Way,  
Eye, Suffolk, IP23 7HU

**Tel: 01379 871168 (24hr)**

- Ley House, 11a London Road,  
Harleston, Norfolk, IP20 9BH

**Tel: 01379 851253 (24hr)**

- Denmark House, 1 & 2a Carmel Works  
Park Road, Diss, Norfolk, IP22 4AS

**Tel: 07879 776175 (24hr)**

**See our customer reviews at**

[www.susanwhymark.co.uk](http://www.susanwhymark.co.uk) Email: [susan@susanwhymark.co.uk](mailto:susan@susanwhymark.co.uk)



# from Horham

be open on New Years Eve.

Active Suffolk are hoping to start a new physical activity project in the Centre if we get enough support.

The Horham Post Office will officially close on Tuesday 19th November, 57 years to the day since David and Irene opened the shop. We thank them so much for playing such an important and vital role in village life, for so many years.

Our renewing membership evening will be on Friday 31st January, 2025.

Good wishes for the New Year.

**Margaret Streeter, for Horham & Athelington Community Council**

## ■ STAY SAFE FROM SCAMMERS THIS CHRISTMAS:

Life is tough currently.

Unscrupulous people are ready to take advantage & steal from you. Take care. Never give your bank or personal details to someone you don't know. Fake ads are on Facebook and Instagram as well as via text and email:

**Winter Fuel Allowance:** This scam tells you that you are eligible for a grant to heat your home. It's a fake!

**Dozens of fake ads:** Ads offering vouchers, gifts, fraud warnings & non-existent jobs - including claiming to be from Lloyds bank, Tesco, Tik Tok, Harvester, etc or saying you've won a prize or your card was declined. Lies designed to steal your info.

● The Which free scam alert service <https://signup.which.co.uk/wlp-scamalert-newsletter>. Take care! *Janet Norman-Philips*

# UNDER ONE ROOF

## HARD LANDSCAPING SERVICES

**Specialist in all types of paving and hard landscaping**

**Driveways, patios, ornamental garden walls,  
drainage solutions and fencing**

**Family run business with more than 30 years of  
on-the-job experience**

*Fast friendly professional*

*Fully insured and all work guaranteed*

**Call Mark for a friendly visit with a free quotation  
01379 677027 or mobile 07768636618  
[www.underoneroof.me](http://www.underoneroof.me)**





# Winter Blues!

**F**or those of you that are willing to brave the weather, if it allows, there is still plenty to do in the garden. From getting all the fallen leaves and twigs off the lawn, to dead heading roses, cutting back herbaceous perennials by half ... the list goes on!

It's a good time to plan and plant spring flowering bulbs before any frosts ... here are just a few to choose from: snowdrops, crocuses, daffodils, tulips, alliums, grape hyacinths. Bulb displays can work equally well in beds, borders or pots. I always try to add some horticultural grit or small pea shingle to keep bulbs free draining prior to planting. If you still want some colour in the winter border, look at mahonia, viburnum, daphne or climbing winter jasmine, which

## YOUR RELIABLE LOCAL PLUMBER



Anglian Water Approved

**Mark Jardine**  
Plumbing & Heating



- All Household Plumbing, Large or Small
- Full Bathroom Installation
- Domestic Heating, Radiators, Pumps etc.
- Water Softeners
- All Work Anglian Water Certified
- Free Estimates & Fully Insured
- 24 Hour Emergency Call Out

Tel: 01728 628291    Mob: 07854 924 801  
Email: [mgjardine@btinternet.com](mailto:mgjardine@btinternet.com)

## GARDENING WITH ANDY

***Facing page: grape hyacinths. This page, from top: alliums; hellebores; and Winter flowering jasmine.***

will initially need supporting against a structure when young, but will eventually support itself. Hellebores, commonly known as Christmas roses are a nice addition to a garden bed, or border, but remember to remove leaves to allow flowers to flourish.

Hopefully, the lawn cutting season has finished, but if dry, you may want to lightly whizz over the lawn on a higher cut setting, just to collect the last fallen leaves. Summer flowering bulbs that have long since finished flowering can be lifted and stored in a dry, cool, frost-free environment. Bulbs should be inspected and stored in whatever medium works best for you – dry soil, sand or individually in cardboard trays, wrapped in newspapers.

If like me you choose to give your bulbs, before storing, a light dusting with yellow sulphur powder, this will help to prevent rotting, provide nutrients and help with fungal and insect damage/disease.

If weather doesn't play ball, those of you fortunate enough to have a greenhouse should give it a thorough clean, inside and out. This takes me back to more than 40 years ago and starting out as an apprentice and having to wash pots day after day with Jeyes fluid. I can still recall the smell of coal tar filling the greenhouse, to which an old boy would shout out "it'll put hairs on your chest son". Happy days!

***Keep warm and keep gardening, Andy***





# Redlingfield flood prevention

In October, the Environment Agency held a well-attended drop in session in Eye. It was for local land owners to meet with Helen George and her team to find out about natural flood management, what grants are available and what she and the Environment Agency can do to

help and organise follow up meetings with individual land owners.

Part of the issue is that farmers need to drain land so as to grow food but have been so efficient that the water gets deposited on to the roads and in to ditches too quickly. So people need to look for ways to keep the water on

the fields, in holding ponds or some such, so that it drains away more slowly.

Hopefully local landowners are following up on this to see what changes are needed to improve matters. The Doorstep Green was also badly flooded so we are also looking at what we can do there.

In Redlingfield, work has continued to clear out most of the main ditches in the village and in Church Road opposite The Knoll. Thanks go to lots of people including Suffolk Council's highways team along with Will Kerry and his trusty digger.

Several houses and businesses in

## CORNER CLASSICS & ENGINEERING LTD AGRICULTURAL & AUTOMOTIVE

SPECIALISTS IN CLASSIC CAR AND TRACTOR REPAIR  
AND RESTORATION



OPEN  
MON-FRI 8-5 PM  
SAT 8-12PM

VISIT THE SHOP FOR:

- A RANGE OF LAWN MOWERS AND OTHER GARDEN EQUIPMENT (SOLD AND REPAIRED)
- HYDRAULIC HOSE & PTO STOCKISTS
- FABRICATION
- PARTS

☎ 01379 384842, 07735207494  
✉ [jamie@cornerclassics.co.uk](mailto:jamie@cornerclassics.co.uk)

📍 LAXFIELD ROAD, STRADBROKE, SUFFOLK IP21 5NL





**Will Kerry and digger at work on a ditch beside Mill Road.**

Redlingfield were badly flooded during Storm Babet, happily repairs have nearly been completed and people are back in their homes. Some homeowners are installing various permanent flood barriers to future-proof their homes.

Redlingfield was given a £1,000 grant by our local Councillor Lucy Elkin, to purchase flood prevention materials. We have spent it getting a selection of single-use temporary flood barriers that can be used when needed.

*Janet Norman-Philips*

## **Paul Durrant & Son Ltd Carpentry Services**

### **MANY ASPECTS OF CARPENTRY**

- Kitchen fitting
- Fitted wardrobes
- Storage solutions
- Window & door replacements
- Timber-framed sheds & home offices

Office: **01379 678485**

Email: **pauldurrantandsonbuilders@gmail.com**  
or **johndurrant75@gmail.com**

For advice call John: **07894 551485**

# Disastrous floods of 1912

**T**he anniversary of Storm Babet got me thinking about previous floods in East Anglia. I remember my father telling me that in 1912 his father was marooned in Ipswich overnight and could not get back to Worlingworth because of deep floods. There were of course bad floods in March 1947 which a few of you may remember and I can remember serious floods in August 1968. I have been browsing the newspaper archives for 1912 and have found much written about the flood which does seem to have been particularly extreme and have selected short extracts for this month's history article.

## **Bury Free Press 31st August 1912:**

"Following upon several weeks of steady rain which became heavy and persistent last weekend, Monday brought a downfall which has had no parallel within recent years. All the country suffered, but East Anglia had a particularly heavy dose. In many parts rain fell pitilessly without cessation for 24 hours, while for 12 hours Norwich was swept by a rainstorm of unparalleled violence in the course of which, a fall of 6 inches was recorded."

**The Stowmarket Weekly Post 29th August 1912** carried the following headline:

**"MEN AND HORSE CARRIED  
AWAY BY THE STREAM AT  
DEBENHAM.**

Never before in the memory of the oldest inhabitant of Debenham has the water risen so rapidly or so high, or done so much damage as on Monday. At 10 AM a sluggish stream trickled along the riverbed. At 11.30 the river overflowed its banks, and by 5 o'clock the whole of the lower parts of the town were flooded. Water running through the houses at depths varying

from a few inches to 3 feet. The water rose a good 9 feet in seven hours and many houses that have never before been known to be flooded had a foot of water running through them. At about 8 pm Mr Walter C Baldry, grocer, was returning home from his rounds, and leaving his van at the top of the London Hill, he mounted his horse with a lad named Collard and attempted to ride through the water to his home. Near the girl's school where the water was very high the current carried both horse and riders into the mainstream. Their cries for help attracted attention and after considerable difficulty and when both man and boy were on the point of exhaustion they were rescued by Mr A. B. Smith. Mr Baldry was assisted to the Dove Inn and made as comfortable as circumstances permitted - the house being flooded - and the lad spent the night at Mr Smith's house. The horse made its way to safety unaided."

**Framlingham Weekly News 31st Aug 1912:** "The low-lying parts of the town of Framlingham district around were all many feet underwater,



had to wade through the flooded Albert Place and Station Road which in places was several feet deep. The story on the following morning of their experiences was most thrilling and will be recorded as one of the most exciting adventures in the Fire Brigade history. The engine was used on its way home on Tuesday afternoon for the pumping out the

furniture and various belongings were washed away from many dwellings and premises and never recovered. For many hours afterwards there were scenes of desolation everywhere. Opinions differ as to the high watermark reached by the storm at Framlingham. A resident in Albert Place showed us a cut in the bricks of his house made at high watermark during the great Flood in 1879, which was not reached on Monday by 3 inches, but his neighbour suggested that the water was much higher than ever before.

About 2 am on Tuesday the already tired nerves of Framlingham folk were subject to further tension by the clanging of the fire bells. The outbreak was Messrs Marlow's Bros. bricklayers at Station Road and was caused by the water coming into contact with the unslaked lime there stored and quickly got to work and subdued the flames. The Framlingham fireman had quite a new experience in reaching the fire at Messrs Marlow's premises. Propelling the Engine to the scene by hand they

water from flooded cellars at residences in Albert Place."

I then checked out the reference to the floods of 1879 and found the following ...

**Framlingham Weekly News 26th July 1879:** "The highest flood known here in the memory of man occurred on Monday last. On Sunday night and Monday morning the gale increased in fury and the rain descended in torrents so that by early morning the Mere was converted into a gigantic lake and by noon the river was overflowed and the tide was rising 8 to 10 inches per hour. In the evening Mr. Damant the postmaster employed a man to receive the letters from the inhabitants and wade up to his middle, to and from the Post Office with them. The Mail Cart driver seeing the water was too deep along the Station Road went around by Fairfield Road and through Mr G Goodwyn's private grounds."

It seems to me that flooding is something that has always been with us throughout history! *Stephen Ling*





# Remarkable year for

**W**hat a remarkable year this has been for the Red Feather Club on so many levels! Our buildings have undergone significant changes and updates. The exterior has received a fresh coat of paint from a contracted company, complete with a guarantee. The toilets have been renovated, with traditional designs for both the ladies' and gents' facilities, while the accessible has been brought up to regulation. Other areas have also benefited from decoration, improvements, and maintenance. We've added beech hedging along the boundary and a yew hedge behind the memorial bunker.

The museum has experienced a thorough deep clean and reorganisation, now featuring superb new lighting. We've also welcomed new collections, thanks to generous donations, with more additions planned. To enhance air circulation, we have installed fans in the built-in cabinets.

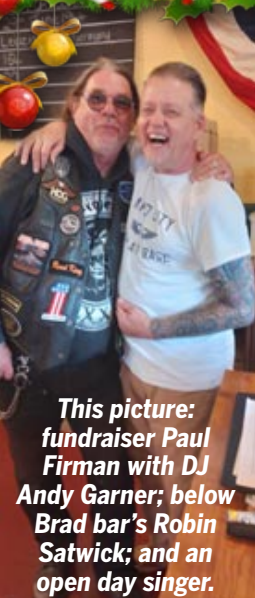
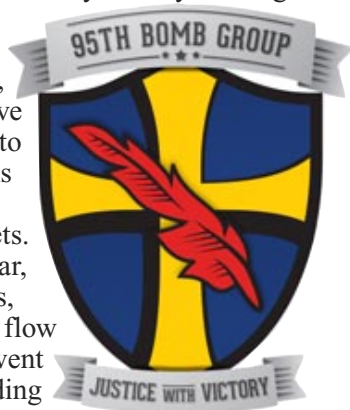
The bar has thrived throughout the year, hosting numerous dances and open days, keeping Brad's Bar lively with a steady flow of beer! Over the winter, the PX underwent a revamp, introducing new stock, including our own branded glasses and beer sets.

We have welcomed many visitors over the past year. In June, we hosted a large group as part of the D-Day anniversary cruise, with over 200 guests attending over the weekend. We provided dancing, live music, military vehicle displays, and, as always, a warm welcome from our committee and volunteers. We've also had numerous visitors from the US, including family members coming to see where their relatives served, as well as tours featuring the cast from appleTV's *Masters of the Air*. Another successful Americana Day and our regular open days featuring live music and a variety of feed trucks have contributed to a fantastic year.

Looking ahead, we are planning a reunion for 2025 along with exciting new additions to the museum. We are also working on plans for a new building to house our Dodge Weapons Carrier, alongside ongoing essential maintenance and further developments for the museum.

Financially, this year has been quite expensive; however, through the success of our events and visits, we have worked hard to raise funds to reinvest in the Heritage Association for future projects.

The loss of two key members of our association has deeply affected our Committee and organisation, but we will strive to remember and honour them in the best way possible.



**This picture: fundraiser Paul Firman with DJ Andy Garner; below Brad bar's Robin Satwick; and an open day singer.**



# the 95th BGHA

None of this progress would have been achievable without the support of our members, volunteers, and Committee. Their efforts are clearly reflected in the transformation of the RFC. Thank you to everyone who has contributed and supported us over the past year. Here's to a successful 2025!

**Scott Bradley, chairman 95th Bomb Group Heritage Association**

## RED FEATHER CLUB EVENTS 2025

Sunday 30 March **Open Day** [Mothers Day]

Saturday 26 April **Dance** - Biscuit Town Swing Band

Sunday 27 April **Open Day**

Thursday 8 May-Tuesday 13 May **Reunion**

Sunday 25 May **Open Day**

Saturday 28 June **Dance** - Cody Lee

Sunday 29 June **Americana Day**

Sunday 27 July **Open Day**

Sunday 31 August **Open Day**

Saturday 27 September **Dance** - David Broad & the Meanwood Valley Stompers

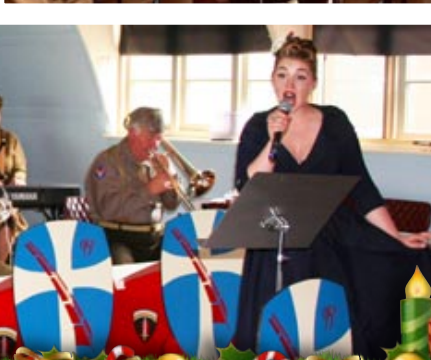
Sunday 28 September **Open Day**

Saturday 25 October **Redlingfield Dance** - DJs AndyAV8 & more

Sunday 26 October **Open Day**

● **The Red Feather Club Museum:** Public Open Days 10am-4pm the last Sunday of the Month from 30th March to 26th October. The museum at Coldhams Hill, Denham, IP21 5DG, is run by the 95th Bomb Group Heritage Association (Charity No: 1119769). Visit: [www.95thbg-horham.com](http://www.95thbg-horham.com). Contact: [enquiries@95thbg-horham.com](mailto:enquiries@95thbg-horham.com).

*This page, from top: Anna & Adam Whittingham leading the way at a recent dance; the cool kids in the mural lounge; the singer's of Station 336; 95th band and Skyliner.*





## WHAT'S ON

### Sunday 1 December

**Christmas Market:** be well barn, Redlingfield, 11am-3pm (see page 9).

**Advent Carol Service:** Athelington church, 4pm, then refreshments at the Old Vicarage.

### Wednesday 4 December

**Redlingfield Coffee Morning:** 10am-noon, Bright Thinken, Church Road.

### Friday 6 December

**Eye Christmas Switch-on & Late-night Shopping:** starts 5pm, switch-on 6pm.

**Carol Singing:** Bedfield Christmas tree on the green 6pm.

**Carol Service:** Red Feather Club, 7pm.

**See How They Run!** Headmaster Porter Theatre, Fram College, 7-10pm, £6-£10.

### Saturday 7 December

**Christmas Fair:** Worlingworth Community Centre, 3pm.

**Diss Christmas Lights Switch-On:** afternoon of festive entertainment.

**Christmas Party:** Horham CC, £3 per child book with Kay 074964 87629. Crafts, present & visit from Santa! Cash only bar.

**Worly Films Present - It's a Wonderful Life:** Worlingworth Community Centre, door 7pm, movie 7.30pm: adults £5, under 13 £2.50.

### Monday 9 December

**Christmas music session:** Horham Old School, from 7.30pm, bring something seasonal for a bring & share supper.

### Tuesday 10 December

**Christmas Carol Concert:** St Mary's Church, Diss, adult £5, child £2.

**Winter Concert with Stradbroke**

**Community Choir:** All Saints Church, 7-9.30pm.

### Wednesday 11 December

**Beer & Carols:** Horham Community Centre, from 7.15pm.

### Saturdays & Sundays 7-8, 14-15, 21-22

**December Santa Specials:** MSLR.



## The Daily Care Agency

High Banks, Athelington Road, Horham, Eye IP21 5EH  
(Open Monday to Friday 09.00-17.00 – closed Bank Holidays)  
Tel: **01379 388438** Mobile: **07977 075301**  
E-mail: [office@thedailycareagency.co.uk](mailto:office@thedailycareagency.co.uk)

**ARE YOU LOOKING FOR SOME EXTRA CARE AND SUPPORT TO  
HELP YOU REMAIN INDEPENDENT WITHIN YOUR OWN HOME  
AND COMMUNITY?**

THE DAILY CARE AGENCY IS A SMALL PRIVATELY OWNED  
DOMICILIARY AGENCY THAT TAKES PRIDE IN HAVING THE TIME  
TO CARE AND OFFER INDIVIDUAL SUPPORT TO OUR CLIENTS

**FOR FURTHER INFORMATION PLEASE CONTACT 01379 388438**

**ARE YOU A CARER? – WE REGULARLY RECRUIT FOR LOCAL  
CARERS TO JOIN OUR TEAM**

The Daily Care Agency is registered and therefore licensed to provide services by the  
Care Quality Commission. Provider ID 1-101723169



**Friday 13 December**

**Janice Burns & Jon Doran:** Wingfield Barns, 7.30pm, tickets £12.

**Christmas Party with Average Funk Band:** Average Funk Band with Harry Issac Presley, 7.30pm, The Bank Arts Centre, Eye, £8.

**Eye Bach Choir Christmas Concert supported by New Buckenham Silver Band:** Eye Town Hall, 7.30pm, £12 each or £20 for two in advance ([www.ticketsource.co.uk](http://www.ticketsource.co.uk) or The Handyman, Eye).

**Saturday 14 December**

**Bach's Christmas Oratorio:** Phoenix Singers, Framlingham College Chapel, 7pm, £15 (under 18s free). Tickets Hall Farm Butchers, Market Hill, Fram or phoenixsingers@outlook.com.

**Horham Community Centre Christmas Buffet:** 7.30 for 8pm, £15 per head. Pre book with payment in advance please. Ring Karen 07775672220.

**Sunday 15 December**

**All Age Carol Service & Nativity:** Horham Baptist Church, croissants, bacon butties & hot drinks from 9.30am, service 10.30am.

**Wednesday 18 December**

**Carol Service:** Redlingfield church, 6pm, mulled wine and mince pies.

**Thursday 19 December**

**Stradbroke Cinema – Swede Caroline (15):** Stradbroke Sports and Community Centre, 7-10.30pm..

**Friday 20 December**

**Wilby School annual Carol Service:** St Mary's Church, Wilby, 2.15pm.

**Sunday 22 December**

**Rocking Foxes - R'Occold:** DJ Crazy Nadge, Occold Village Hall, 2-5pm, £8.

**Carol Service:** Horham church, 4pm.

**Crib Service:** Athelington church, 6pm.

**Tuesday 24 December**

**Candlelit Carols:** Horham Baptist Church, 6pm, carol service followed by festive treats.

**Midnight Service:** Horham church, 11.30pm.

**Wednesday 25 December**

**Christmas Day Celebration:** Horham Baptist Church, 10.30am.

**Wednesday 1 January**

**New Year's Steam Up & Historic Lighting Exhibition:** MSLR.

**Saturday 11 January**

**Open Mic Night:** Horham CC.

**Friday & Saturday 10 & 11 January**

**Treasure Island - The Pantomime:** Dove Players, Occold Village Hall, £12 & £8 concessions ([www.ticketsource.co.uk](http://www.ticketsource.co.uk)).

**Tuesday 21 January**

**Talk by Metal Detectorist Joe Edwards-Gill:** Hoxne Heritage Group, Hoxne Village Hall, 7.30pm, £5, bar from 7pm.

**Friday, Saturday 24 & 25 January & Friday 31 January & Saturday 1 February.**

**A Farndale Christmas Carol:** Harleston Players ([www.harlestonplayers.co.uk](http://www.harlestonplayers.co.uk)).

**Friday 31 January**

**Horham Community Centre renewing membership evening.**

**Wednesday 5 February**

**Redlingfield Coffee Morning:** 10am-noon, Rush Meadow, Woodlane Road.

● **Eye Cinema** - Eye Community Centre, advance tickets from The Handyman. To reserve tickets call Kit Brinkley on 07947 414 968 ● **Bank Arts Centre** [www.thebankeye.org](http://www.thebankeye.org)

● **Helmingham Hall Gardens** [www.helmingham.com](http://www.helmingham.com)

● **Mid-Suffolk Light Railway** [www.mslr.org.uk](http://www.mslr.org.uk) ● **Redlingfield** [www.redlingfield.suffolk.gov.uk](http://www.redlingfield.suffolk.gov.uk)

● **Stonham Barns** [www.stonhambarns.co.uk](http://www.stonhambarns.co.uk) ● **Suffolk Owl Sanctuary** [www.owl-help.org.uk](http://www.owl-help.org.uk)

● **Stradbroke Cinema** Stradbroke Community Centre, 7 for 7.30 pm [www.stradbrokeonline.org.uk](http://www.stradbrokeonline.org.uk)

● **Wingfield Barns** [www.wingfieldbarns.com](http://www.wingfieldbarns.com) tickets via [www.wegottickets.com](http://www.wegottickets.com)

# Major changes around

There have been some changes around school this term particularly in our Early Years outdoor classroom. A larger under-cover area has been created and all sorts of wonderful new equipment has been purchased to make this an even more exciting learning space. In addition to this to the rear of school the roof on our learning shelter has been replaced and new seating and tables purchased which will make this a lovely outdoor learning space/playground shelter for all year groups.

Last year our School Council requested a quiet area for pupils to use for reflection and reading etc. Their design ideas are being put in place this term, and a very comfortable seating area has already been created alongside the front entrance to the school. This, and also the development of the shelter/learning space on the field have all been funded by our wonderful FOWSA (Friends of Wilby School). This term the school council also held a highly successful poster competition. The Be Bright Be Seen poster competition attracted 47 entries and it was very hard to choose a winner as the standard was so high.

Fundraising and community outreach: Our school council have been busy again this term and they were very honoured when Anne, the founder of New Hope Orphanage and Primary School travelled all the way from Kenya to thank the children of Wilby School for all of the fund raising they have done so far and to discuss future projects with them. As a result, the School Council are holding a sponsored silence in November and will be sending the money raised to help fund educational trips for the pupils of New Hope. In December our brass and singing groups will be visiting the residents of Hartismere Place Care Home. Our parents and carers are to be thanked for their generous donations to the Waveney Food Bank which were collected as part of our Harvest Festival celebrations

On Friday 18th October a team of four pupils from Yr5 took part in an inter-schools English and Maths competition organised by Stradbroke High School. They won! Special congratulations go to: Nathan, Charlotte, Rudi and Noah.

On Friday 15th November Wilby

---

■ **NEW COUNTY COUNCILLOR:** Conservative Henry James Lloyd was elected County Councillor to Hoxne & Eye Division on Thursday 10 October 2024. Voting took place following the death of Conservative councillor Peter Gould in July. Henry Lloyd achieved 895 votes to hold the seat for the party with a majority of four. The Green candidate Joanne Brooks came second with 891 votes. To contact councillor Lloyd email [henry.lloyd@suffolk.gov.uk](mailto:henry.lloyd@suffolk.gov.uk) or phone 07511 867416. For news on housing, potholes and more visit [www.henryjameslloyd.com/p/county-november-report](http://www.henryjameslloyd.com/p/county-november-report).

WILBY SCHOOL

# Wilby School

Primary was due to be visited by the Wonderdome - an indoor planetarium with presenters that will inspire and captivate our pupils with the beauty and scale of the solar system, and beyond.

This term, FOWSA (Friends of Wilby School) ran a brilliant Beetle Drive which raised £567 pounds for school funds. We are already excited about the Christmas Fair that they are holding on December 5th at 3.30-5.30pm in Wilby Village Hall. Please do come and join us!

As a result of their fabulous fundraising FOWSA has provided the school with ten new laptops and are paying for all pupils from year 1 to year 6 to visit the pantomime at the Corn hall in Diss in December.

Stay and Play-Wilby Toddlers group: After the half term holiday we started a new activity group for Pre-School and Toddlers (age 0-4yrs) at 9am-10.15 every Tuesday. Everyone is welcome, so please tell your friends and family.

As always there will be lots of Christmas musical events as we approach the festive season including a Christmas brass, strings and singing event and the EYFS and KS1 Christmas production 'Lights, Camel Action' is bound to be a hit.

In October our Harvest Festival focussed on the importance of insects in crop growing. The church was packed and it was wonderful to see so many parents, family members and members of the wider community in church celebrating with us. You are all welcomed to join us again on Friday 20th December at 2.15pm for our annual Carol Service in St Mary's Church.

*Roisin Wiseman*





## IN MEMORIAM

### **BRIAN EDWARD CHAPMAN (22nd April 1940-23rd August 2024) the eulogy read by Brian's son Mark at his funeral:**

Brian was born on 22nd April 1940, one of four children to Eva and Eddie Chapman. He grew up in a not too structurally sound cottage in Horham street, backing onto the 95th Bomb Group airfield, with a flying fortress hard standing point at the bottom of the garden.

Brian and his family soon made acquaintances with the friendly invasion of Americans and some of his earliest memories involved them.

Like the time when aged around four years old, his bedroom ceiling collapsed, covering him in dust and breaking his bed. The servicemen soon turned up with a new standard issue bed, no doubt "borrowed" from the American War Department!

On another occasion, one of the servicemen had a child seat mounted on the crossbar of his bicycle and he cycled all the way to Diss with Brian perched upon it! Whilst in Diss the serviceman bought Brian a little one penny book (which the family still have) all about a gnome, whose job was to clean and polish the moon.

Brian went to school in Stradbroke where he excelled at woodwork, making things like table lamps and stools which the family still possess. Upon leaving school at the age of 14, Brian went to work on a farm in the village, where he stayed for a few years before leaving to

work for Gobbits the builders in Worlingworth. He worked his way up to site foreman, which is a job he did for many years before starting out on his own in the building trade.

Brian used to enjoy going to dances in the surrounding villages and it was in April 1958 when he met Jenny for the first time at a dance in Hinderclay village hall. Enjoying each other's company, they agreed to meet again the following week at another dance in Wilby village hall.

However, it was nearly all over before it began, when Brian went to a dance in Wilby near Stradbroke and Jenny went to a dance in Wilby near Attleborough! Luckily, they both saw the funny side of it when they happened to meet again the following week.

Four years later in September 1962 they were married and moved to a small cottage in Worlingworth. In February 1964 their son Mark was born, followed by Kevin in June 1968.

Later that same year Brian and Jenny moved back to Horham and over the following years became involved in many aspects of the community.

Brian's building work took him to many old and interesting buildings, with this very church being one of them, as he was involved with the installation of the new bell frame and the rehangings of the bells in the tower.

His skills and knowledge were put to use as part of the village effort to create the community centre and the 95th bomb



group memorial just across the road. Being involved with the memorial meant that his family and many other families in the village forged lasting friendships with some of the ex-servicemen of the 95th and their families across the pond.

Brian was always a keen gardener, and enjoyed nothing more than a home cooked meal using produce from his garden. Apart from the many vegetables he grew, Brian also reared chickens, and keeping guard over these hens was a very feisty cockerel.

One day the afore mentioned cockerel decided to have a go at Jenny - much to Brian's amusement!

However, a few weeks later Brian didn't quite see the funny side of things when the feisty bird proceeded to sink its spurs into his back! Suffice to say the cockerel

didn't survive for long after that!

Following retirement, Brian and Jenny moved to a smaller property in Roydon where he continued to enjoy gardening and tinkering in his shed. Three years later in January 2010 they saw the safe arrival of their first grandchild Eva, followed by Alfie in December 2011.

Despite living in a not so rural location, Brian still hung onto his old grey Fergie tractor which was his and Kevin's pride and joy and it always brought a smile to his face whenever his grandson Alfie told him he had driven the little Fergie to chain harrow the meadow.

Brian will be sorely missed by all the family, but the final words as I draw this eulogy to a close, are from Kevin ... "Goodbye Pal, you're the best Pal I've ever had".

# STUMP GRINDING

**Call Tony on 07949608243 for a quote**



**Also Mini Diggers, Dumpers, Rollers etc for hire. Based in Denham.**

## IN MEMORIAM

**ALAN JOHNSON (3rd December 1936-5th September 2024): A short eulogy about Alan Johnson's early life was read by Rev Eleanor Goodison at his memorial service at Waveney Memorial Park and Crematorium on Friday 27th September 2024. This was followed by 95th BG Heritage Association treasurer John Kirkum's eulogy ...**

**He was the youngest of the family, born at the Post Office, and a quiet boy, deep thinking, though not keen on homework – he declined to apply for the grammar school when he found out there was an exam. He could come out with amusing things as when he said: "It's close today, mum isn't it? I'm just guessing because I don't actually know how far away the weather is." He spent hours in Mr Baldry's workshop as a boy and went on to work for him. Later, National Service took him to Malaya. He played football for Stradbroke and was part of the tug of war team and he was able to walk on his hands, greatly impressing Jenny as a little girl. But the formative experience of his life was the arrival of the Americans in Horham when he was only five. According to Ruth, he would watch them going past the Post Office and play with oxtail bones as if they were aeroplanes. He carried this interest with him into adulthood, of course, and throughout his life.**

■ The winter 95th BGHA newsletter will have a fuller tribute to Alan.

I am honoured, to pay tribute to Alan on behalf of the 95th Bomb Group and the Red Feather Club which, was for him, a truly special and much-loved place and to which he devoted so much of his long life.

But where do you begin to talk about such a man as Alan? Who, growing up in the village of Horham, witnessed the arrival and departure of the American airmen, trained as a carpenter, worked at the village garage and also undertook his own military service in the Royal Electrical and Mechanical Engineers in Malaya. A life such as his cannot be adequately summarised in a few words. But, I know all of you will share your own precious memories of Alan, whose passion for the air base, knowledge, enthusiasm and good old Suffolk humour left a lasting impact on all those that had the privilege to meet him.

Alan was born in the Post Office in Horham, just a stone's throw from the airfield perimeter. As children, Alan, his sister Ruth and brother David would be regular visitors to the airfield where they would be treated to sweets and rare food items from the airmen and attend Christmas parties. These experiences and friendships formed the beginnings of a life-long interest in the 95th.

In the 1980s Alan, along with his brother and sister and a handful of locals had the foresight to acquire the run-down Red Feather Club. Their aim was to save and preserve the building and in particular the murals. Re-building it took many years of hard work and without Alan's skilful workmanship and dedication, the building would not be as it is today.

Reunions were organised in the US and Horham as veterans returned to see their old base. Those friendships that were first formed in the 1940s were rekindled. With the Club restored, visitors continued to come to Horham. Each time, Alan was on hand to guide them around the village in one of his restored



military vehicles and share his knowledge. Everyone that met Alan couldn't fail to be impressed by his knowledge, enthusiasm and warmth. The tours of the museum and village were an unforgettable highlight for so many.

He ensured that the Club was in pristine condition. Cutting the grass, painting, building, cutting trees down, digging out the roots by hand! He took immense pride in the museum; I think he felt he owed it to the brave young men who had served there,

Alan was never happier than when he was reminiscing with veterans and visitors. The reunions were such joyful



occasions and for Alan.

Alan was a man of great depth and had a great sense of humour too. He was quick-witted and could often see

the funny side of life. I remember once, when he was asked, have you lived in Horham all your life? His reply was ... "not yet!"

There is a saying that you're either a "do-er" or a "talker" – Alan was most definitely a "do-er" – this is evident to all who are connected with the Red Feather Club and Horham where he would regularly be seen cutting the grass around the memorial and the Community Centre and keeping the hedges perfectly trimmed. He was even instrumental in the construction of the Community Centre,

helping to transport it from Slough and then rebuilding it in the village.

Alan was also a "talker", get him on his own or in a small group, and he would talk! Those who were lucky enough to be there were rewarded with priceless gems. Alan took you back in time, reliving and recalling every detail of the missions, the planes and the crew. Such were the vivid memories of his life during the war and the enormity of what he had lived through. His power of recall never diminished. Despite the fact that he must have met hundreds of people, it always struck me how accurately, he remembered their names, faces and where they were from.

His other great love was restoring military vehicles and he could often be found in his garage tinkering.

Alan shied away from the limelight, brushing off all the praise he so rightly deserved. The volume of tributes from across the country and from the USA are testament to his life of service and dedication to the Red Feather Club and community in which he lived.

One of the more recent events at the Red Feather Club was a play telling the story of a boy growing up in a Suffolk village beside a war-time US airfield. It was a poignant reflection of Alan's own childhood. He attended it twice and it moved him deeply.

Alan's memory will forever live on, not only in our hearts but in the very buildings he helped create and preserve. How lucky were we, to have known, lived and worked alongside him. His legacy will continue and he will forever remain at the heart of the 95th family and his beloved Red Feather Club.



JUBILEE  
BAPTIST  
CHURCH

# You're Welcome!

We're a small Church, with a big heart, serving a Great God


[www.jubilee baptist.co.uk](http://www.jubilee baptist.co.uk)

email: [jubilee baptist@occold.com](mailto:jubilee baptist@occold.com)




JUBILEE  
BAPTIST  
CHURCH


Sundays 10.45am in the Chapel or Village Hall,  
Occold, Eye, IP23 7PL


 @jubilee\_baptist


 [www.facebook.com/JubileeBaptist1](https://www.facebook.com/JubileeBaptist1)


 [www.instagram.com/jbcoccold](https://www.instagram.com/jbcoccold)

We have  for each other

We grow together 

 We worship Jesus

We share God's message 

We'd love to see you ...  
why not give us a look? 

For any information not online or any questions please contact Rob 07504 927399

Giving glory to God and helping everyone have a strong relationship with Jesus

■ **HOXON HUNDRED COTSWOLD DANCERS:** Hoxon Hundred Morris dancers practice every Wednesday from September till the end of April in St Edmunds Hall, Hoxne, from 7.30pm on. This is the time of year we encourage new members to come along and give it a try. In 1993 I was a divorcee feeling completely lost as to how to lead my single life. I joined Hoxon Hundred Morris dancing team and it offered me a new focus. Not only has it helped me keep fit but has given me a full social life and I've made many friends. Come along and give this inexpensive activity a try. It's a good way to keep the body and brain exercised during cold winter months. We advise you to wear comfortable clothing and footwear. If you wish to continue dancing throughout the Summer, you can join us at fetes, festivals and Wednesday night pub dance outs. We are also extremely grateful to welcome musicians. Drop in any Wednesday and see how you get on. For more information please contact Jenny on 07403637517, or Jane on 0756468186. We're also on Facebook under Hoxon Hundred Morris Dancers. We look forward to meeting you.

*Jan, Hoxon Hundred*

■ **RURAL CONNECT:** A new transport service has been launched by Communities Together East Anglia (CTEA) in our area. Rural Connect, funded by Mid Suffolk District Council, offers a door-to-door service into Eye & Debenham. The service is Monday to Saturday, 7am to 7pm. It offers affordable transport for residents of Horham & Redlingfield, among others, wanting to travel into Eye & Debenham for shopping, education, socialising, work, medical appointments or onward travel. It offers an accessible vehicle. Contact: 01449 614271 or [bookings@communitiestogether-ea.org](mailto:bookings@communitiestogether-ea.org).

[www.communitiestogether-eastanglia.org](http://www.communitiestogether-eastanglia.org)

■ **SHCT SPONSORED BIKE RIDE:**

**Horham:** Daphne Harvey would like to thank cyclists Robert & Dominique Goodin, Daniel Streeter, and David & Michael Whatling and their sponsors who raised £235 for St Mary's church, Horham. A big thank you also to those who manned the church.

**Redlingfield:** Phillip Leeder & Adrian Goodyear raised a record amount for Redlingfield. Phillip, riding on his 65th birthday, raised £435 & Adrian raised £440 visiting 29 churches. Phillip would like to thank all those who surprised him on their return to St Andrew's in Redlingfield with cake & food to celebrate his birthday. Redlingfield PCC thanks the riders, sponsors & those who manned the church.

■ **PLANNING:**

**GRANTED:** Application detached annex building for use by family member ancillary to host dwelling at **Malsters, Chapel Lane, Horham, IP21 5ES** (DC/24/03374). Conditions discharged for Wildlife Sensitive Design Scheme at **Mill Farm, Mill Road, Redlingfield, IP23 7QU** (DC/20/03940).

Planning information from Midsuffolk District Council  
<https://planning.baberghmidsuffolk.gov.uk/online-applications/>



**The Horticulturalist**  
ANDREW PETERS & ETHAN PETERS

[andrewpeters65@hotmail.com](mailto:andrewpeters65@hotmail.com)  
Mobile: 07956651157  
Free Estimates

City and Guilds Qualified  
Over 35 Years Experience  
Private and Commercial



## REDLINGFIELD & OCCOLD WI

■ **REDLINGFIELD & OCCOLD WI:** The members of our group have had a busy few months.

For our September meeting we welcomed Michelle Attrill to talk to us about British Sign Language. Rather than teach us lots of signs she spoke to us about the different types of deafness and how deaf people experience many aspects of life differently, that to those of us who can hear, take for granted. It was very interesting and informative.

In October Sarah-Jane Clarke from FCC Environment spoke about how her company works with MSDC to recycle all our household waste. We discovered that from March 2026 glass and food waste will be collected alongside the other existing waste collections. We learned a lot about what happens to our waste, how

it is sorted, sold on, recycled or burned to provide energy. She was a really engaging and informative speaker who made her subject entertaining and fun. We even had a quiz at the end!

Our November meeting was our AGM where we were able to socialise after the formal business was completed with cheese and biscuits and prosecco.

During October we hosted the WI Dove Group meeting. This is a group of seven local groups that take it in turns to host, meeting in the Autumn and Spring. We were pleased to welcome around 50 ladies to Occold Village Hall and arranged a talk from the 3girls1climb to share their experiences of climbing Mt Kilimanjaro on the 1st anniversary of the climb. We were treated to an inspirational presentation from Amanda, Nicky and Zoe.



**Cowhams**

*"For today's automotive demands"*



Scan or visit  
[www.cowhams.co.uk](http://www.cowhams.co.uk)  
**01379 388 999**  
[enquiries@cowhams.co.uk](mailto:enquiries@cowhams.co.uk)

Other activities have included three members attending a lino cutting workshop, following on from our visiting speaker in July, and a group of us attending a basket weaving workshop led by Jonathon, a Norfolk basket weaver.

In October we held our annual Harvest Supper where we cook a meal for members, partners and other members of the village community. This is always a popular event that is our main fundraiser for the year.

Towards the end of November some of us are planning a cinema trip to see 'Paddington in Peru'. We promise to behave and not rustle our sweet wrappers

loudly or throw popcorn around!

In December we will be enjoying our Christmas meal celebrations. In January, our member Julia will be talking about her cycling trip

through Europe and in February we have a talk from local author Natalie Meg Evans.

We usually meet on the first Wednesday of every month in Occold Village Hall at 7.30pm. If you would like more information about our activities please contact Sara Hampson (President) on 01379 678868, or just come along to a meeting. We look forward to welcoming  
**Gill Chapman**



***If you are in a hole...  
...we'll dig you out***

**07881  
642232**

**MINI & MICRO DIGGERS  
DUMPERS • BREAKERS • MIXERS  
TELEPORTERS • SMALL PLANT  
SCARIFIERS • TURF CUTTERS  
WACKERS • ROTAVATORS  
STRIMMERS • TOOL HIRE**

**tom@tlplanthire.co.uk**

*Diggers can be provided  
with operator, if required.*

Bridge House, Denmark Hill, Palgrave, Diss IP22 1AB



### ■ HORHAM & ATHELINGTON PARISH COUNCIL:

The Post Office in Horham will be closing on the 18th November and the shop at some time in the future. The meeting about its future on the 20th August was very busy but, unfortunately, no individual was willing or able to take over the running of the shop. However, it was decided that a working party would be formed from interested persons to try to negate the effects of the closure to the community.

It has been noticeable that there has been an increased amount of speed enforcement in Horham by the Police in the last few weeks as intimated in the last magazine.

Having spoken to one of the officers it appears that they should be attending at least monthly. The timing of attendance was discussed as I'm not sure lunchtime is ideal and this was accepted. We will see if this affects the amount of speeding through Horham.

Members of the Parish Council Met with a representative of Suffolk Highways

in September. This proved to be a very useful exercise in which we learned quite a lot. This has enabled us to report various issues to the Highways Department with interesting results. The centre lines on The Street at the junction with Farm Close have been repainted as they had all but disappeared and the bump in the Athelington Road that caught out vehicles with a normal ride height has been flattened.

The bad news is that the junction at Farm Close where there are give way lines and ghost island markings is, apparently, not bad enough to warrant action! Now reporting procedures have been established. They can look forward to some more.

There are many things we can do to enhance the highways element of the village but these would have to be paid for by the Parish. We will consider any which would be affordable and worthwhile in future meetings.

There have been continued meetings with suppliers and interested parties in respect of the children's and adult play/fitness areas in the village. Work will continue with a view to secure grants from providers in Suffolk and to see this project realised.

I'd like to welcome a new member of the Parish Council, Sheree Queen. A welcome addition to the council. The next meeting of the Parish Council is in January 2025 at 7.30pm at a date to be confirmed. See notice board for details.

Finally a sad farewell to Alan Johnson and Rodney Tyrell who we have lost lately. Both were a huge asset to the community and will be sorely missed.

**Andy Black**

# G.G. EVANS

## Pest Control Services

07795 177695

01379 608932

[info@ggevens.co.uk](mailto:info@ggevens.co.uk)

**MOLES, RABBITS,  
WASPS & MORE**







**Adrian Ramsay** (Waveney Valley MP) 07534 933 356,  
adrian.ramsay.mp@parliament.uk.  
House of Commons, London,  
SW1A 0AA.

When I marked my first 100 days as an MP in early October, it was a chance to reflect on the changes I wanted to make as an MP and the issues I am raising in Parliament.

The more correspondence I get from constituents, the more I recognise the level of need, whether it's the lack of affordable housing and public transport or the difficulty of accessing NHS services.

I've been able to raise many of these issues in Parliament including at Prime Minister's Questions, bringing Waveney Valley's voice to Westminster. I've spoken in debates on NHS dentistry, the state of our

rivers, the need for all new homes to be energy-efficient and the lack of adequate provision for SEND children and their families. That's just for starters.

Every day I spend in the constituency reminds me what a privilege it is to represent the people of Waveney Valley. There is fantastic work going on, from nature conservation and restoration schemes to projects helping people who are struggling to work or promoting our fantastic market towns.

Every group I talk to leaves me inspired by the changes people are bringing about in their own communities. We can achieve so much when we work together.

***I wish you all a happy Christmas and the very best for 2025.***

Do you OR your organisation need help with  
study or apprenticeship costs such as:-

Books

Course-fees

Equipment

Specialist Clothing

Are you under 25 and live in EYE, ATHELINGTON,  
HORHAM OR BEDFIELD

**The Eye Grammar School Fund  
may be able to help!**

Meetings to award grants are held in January, April, July and October  
For more information contact

Clerk to the trustees: Susan Whymark

eyegrammarschool@gmail.com



## DISTRICT COUNCIL - LUCY'S NEWS



**Lucy Elkin** (District Councillor for Eye, Occold and Redlingfield). 07928 512590, [lucy.elkin@midsuffolk.gov.uk](mailto:lucy.elkin@midsuffolk.gov.uk) [www.facebook.com/CllrLucy/](http://www.facebook.com/CllrLucy/)

We are lucky to have so many great charities, social enterprises and community groups in our area.

In this issue I wanted to highlight some of the grants available from Mid Suffolk District Council for community projects.

You can find details of all the District Council's community grants – including the ones described below – at [www.midsuffolk.gov.uk/community-funding](http://www.midsuffolk.gov.uk/community-funding).

The District Council has a very helpful grants team: please email them if you have any questions or want to know which grants might be right for your

project. You can contact them at [BMSDCgrants@baberghmidsuffolk.gov.uk](mailto:BMSDCgrants@baberghmidsuffolk.gov.uk).

■ **Locality Awards:** The small Locality Award is open to groups in Eye, Occold and Redlingfield. The minimum grant is £250, and applications can be for a wide range of things, including costs for community events. Best of all, the application form is very short! This fund does get allocated very fast: if your group would like to apply – especially if you have never applied before – please do get in touch. You can see how to apply – and which groups have received funding – at [www.midsuffolk.gov.uk/w/locality-awards](http://www.midsuffolk.gov.uk/w/locality-awards).

Two of the other regular grants are:

■ **The Capital Grant** – up to £10,000 for improvements or repairs to community facilities.

01728 628233

*AH*  
Athelington Hall



### Cheeky Porker Hog Roast

Our Hog roasts can be tailored to any occasion feeding between 60-250 people. Slow cooked here for 10+ hours, just wait until you try our crackling!



### Log Cabin Holidays

Are you looking to get away but don't want to travel too far? Come and enjoy a well earned break in a luxury lodge with your own private hot tub nestled away in the tranquil countryside at Athelington Hall.

Athelington Hall Horham Eye Suffolk IP21 5EJ  
[info@logcabinholidays.co.uk](mailto:info@logcabinholidays.co.uk)

■ **The Community Development Grant** – up to £20,000 for groups looking to develop a project or service where a 'gap' or need has been identified. Application 'windows' for these vary, so it's a good idea to keep an eye on the website for deadlines.

Also available are:

■ **Eye Turbines Fund** – Groups within 10km radius of the wind turbines at Eye can apply for up to £1,000 for projects for renewable energy or energy efficiency, or biodiversity projects including tree planting.

■ **Sustainable Communities Food Fund** – for small-scale food projects, such as community pantries. Grants can cover things like training for volunteers, equipment, planters or fruit trees.

■ **The Rural Communities Fund** covers things such as creation of spaces for

community and business use; net zero infrastructure within communities, and rural tourism.

■ **The Rural Culture and Creativity Fund** provides grants for arts, culture and heritage projects.

Finally – Mid Suffolk District Council can also support eligible projects with free tree, hedge and wildflower packs. Please do get in touch if interested.

We want to make sure funding gets to the local groups that need it and that help to make this a great place to live, so please do spread the word. With many thanks to all our local community organisations and volunteers, for everything you do!

**For District Council issues, please contact me and I will try my best to help.  
See you soon, Lucy.**



**Safe & Sound  
Hygiene and Pest Control**

**Is your garden overrun with moles?**

**Do you have a wasp nest?**

**Are your paddocks overrun with rabbits?**

**For ALL your domestic or commercial Pest Control**

**Woodworm treatment available.**

**No obligation – free survey/quotes.**



*Pest infestation can damage your health and your home. Recent surveys show that numbers of mice/rats and bed bugs found in UK homes are on the rise. As Local Authorities are cutting back on free pest control services. We are here to offer you a service at the right price.*

**Call us to discuss your pests on 07809226109.**

**[www.safeandsoundhygieneandpestcontrol.co.uk](http://www.safeandsoundhygieneandpestcontrol.co.uk)**



## CHURCH NEWS

### ○ NOW CARRY ME TO BETHLEHEM

It's that time of year again! (Although if you go by the shops it has been Christmas since sometime in September).

The church starts looking forward to Christmas on Advent Sunday, which neatly falls on 1st December this year. But the emphasis is on preparation, making our hearts and souls ready to receive the infant Christ. Prayerful preparation will help us to experience some of the amazement and wonder, the awe, which the original witnesses to the incarnation of our God must have felt. Our hope is to be carried in spirit to Bethlehem and that momentous birth.

Nevertheless, we shall be rejoicing as we look forward with our usual programme of carol services (details below).

We begin with our Advent carol service at Athelington church at 4pm on Sunday 1st December, followed by refreshments at the Old Vicarage. Redlingfield's carol service will be at 6pm on Wednesday 18th December; there will be a carol service at Horham at 4pm on Sunday 22nd December; and Athelington will have a crib service at 6pm on Sunday 22nd



**Rev Canon Eleanor Goodison,**  
**Priest in Charge, Hoxne**  
**Benefice** 07876 143579  
eleanor.goodison@gmail.com.

December. We will have another crib service at Wingfield on Christmas Eve at 4pm.

For Christmas itself Horham church will hold its usual Midnight service at 11.30pm on 24th December and there will be a service of Holy Communion at Redlingfield at 9.30am on Christmas morning.

And for the church the Christmas season continues throughout January. Everyone is welcome to Messy Christingle for Epiphany on Sunday 5th January at Syleham. The feast of Candlemas finally rounds off the season on Sunday 2nd February.

As you celebrate with family and friends, please don't forget those who may be on their own or who feel they don't have anything to celebrate. Jesus came to bring the love of God to earth. Let's share it with each other this Christmas time.

Have a very joyful Christmas when it comes and a peaceful New Year.

---

■ **ENQUIRIES:** Daphne Harvey, St Mary, **Horham** (384216) or David Spall (384239); Colin Palmer, St Peter, **Athelington** (01728 628747); Hazel Abbott, St Andrew, **Redlingfield** (678217).

---

### ■ HORHAM PARISH NOTICES:

**Stephen Wilfred Scorer**, 71 years, cremation Waveney Crematorium, September 2nd, subsequent burial of ashes at St Mary.

**Brian Edward Chapman**, 84 years, funeral service, 23rd September.

**Alan Edward Johnson**, 87 years, cremation Waveney Crematorium, 27th September.


**Edward 'Ted' Harvey**, 88 years, funeral service 12th November.

**Rodney 'Rod' Frederick Tyrrell**, 77 years, funeral service Horham Baptist Church, October 22nd.



**Fleurs Artisan Florist & Greengrocer**

# Let Fleurs Artisan help this Christmas



We are offering locally grown Nordman and Norway spruce Christmas trees, handmade luxury door wreaths, bird feeder wreaths, swags to measure for fireplaces or beams, door wreaths and remembrance wreaths, table decorations, Xmas bouquets and more . . .

**We can create greengrocery hampers and package your pre-ordered Christmas fruits and vegetables for collection.**

**For opening times please  
visit our website  
[www.fleursartisan.co.uk](http://www.fleursartisan.co.uk)**

Greengrocery orders for collection, email us and we can forward our list by return.

**Please order  
early to avoid  
disappointment.**



**Fleurs Artisan Florist & Greengrocer, 6 Church Street, Eye  
[www.fleursartisan.co.uk](http://www.fleursartisan.co.uk) ● 01379 831083 ● [fleursartisan@btconnect.com](mailto:fleursartisan@btconnect.com)**

## CHURCH SERVICES

■ **Planned church services December 2024 to February 2025** (changes to normal service times are shown in **bold**) **Fridays:** Compline at 6pm on Zoom.

### **Sunday 1st December Advent Sunday**

9.30am BCP Holy Communion, Hoxne;  
11am Patronal Festival, Wingfield; **4pm  
Advent Carol Service, Athelington**  
[Messy Church postponed for a week]

### **Sunday 8th December**

#### **Second Sunday of Advent**

9.30am CW Holy Communion,  
Redlingfield; 9.30 for 10am Café Church,  
Hoxne; **4pm Messy Church Christmas  
party, Syleham & Wingfield Village Hall.**

### **Sunday 15th December**

#### **Third Sunday of Advent**

9.30am CW Holy Communion, Hoxne;  
11.15am BCP Holy Communion, Horham;  
**4pm Carols by Candlelight, Wingfield.**

### **Wednesday 18th December**

6pm Carol Service, Redlingfield.

### **Sunday 22nd December**

#### **Fourth Sunday of Advent**

11am Carol Service, Denham; 11am CW  
Holy Communion, Hoxne; **4pm Carol  
Service, Horham; 6pm Crib Service,  
Athelington.**

### **Tuesday 24th December**

#### **Christmas Eve**

4pm Crib Service, **Wingfield**; 11.30pm  
Midnight Service, **Horham.**

### **Wednesday 25th December**

#### **Christmas Day**

9.30am CW Holy Communion,  
Redlingfield; 11am CW Holy Communion,  
Denham.

### **Sunday 29th December**

#### **First Sunday of Christmas**

11am Benefice Holy Communion,  
**Wingfield.**

### **Sunday 5th January Epiphany**

9.30am CW Holy Communion, Athelington;

11am CW Holy Communion, **Wingfield**;  
4pm Messy Christingle, **Syleham church.**

### **Sunday 12th January**

#### **Baptism of Christ**

9.30am CW Holy Communion,  
Redlingfield; 9.30 for 10am Café Church,  
Hoxne.

### **Sunday 19th January**

#### **Second Sunday of Epiphany**

9.30am CW Holy Communion, Hoxne;  
11.15am BCP Holy Communion, Horham;  
6pm Evensong, **Wingfield.**

### **Sunday 26th January**

#### **Third Sunday of Epiphany**

9.30am BCP Holy Communion,  
Syleham; 11am CW Holy Communion,  
Denham; 4pm All Age service, Hoxne.

### **Sunday 2nd February**

#### **Presentation of Christ in the Temple (Candlemas)**

9.30am CW Holy Communion,  
Athelington; 11am CW Holy Communion,  
Wingfield; 4pm Messy Church, Syleham  
and Wingfield Village Hall.

### **Sunday 9th February**

#### **Fourth Sunday before Lent**

9.30 am CW Holy Communion,  
Redlingfield; 9.30 for 10am Café Church,  
Hoxne.

### **Sunday 16th February**

#### **Third Sunday before Lent**

9.30am CW Holy Communion, Hoxne;  
11.15am BCP Holy Communion, Horham;  
6pm Evensong, **Wingfield.**

### **Sunday 23rd February**

#### **Second Sunday before Lent**

9.30am BCP Holy Communion,  
Syleham; 11am CW Holy Communion,  
Denham; 4pm All Age service, Hoxne.

**Abbreviations:** BCP – Book of Common Prayer; CW – Common Worship.





# David Dunnett Family Butcher

17 Church Street, Eye - Tel: 01379 870155

Web:- [dunnettbutcher.co.uk](http://dunnettbutcher.co.uk)

**Beef, Pork, Lamb & Poultry from local Farms**

♦ *Home Made Sausages our Speciality* ♦

*For the B.B.Q all home made*

Lamb Grillsticks Marinated in a Variety of Flavours

Beef, Pork, Chicken & Lamb Kebabs

Marinated Belly Pork & Pork Ribs

Beef, Pork, Lamb, Chicken & Venison Burgers

**EYE — SALON**  
**HAIR + BEAUTY**

## We've moved!

We are now at The Hexagon, Broad Street, Eye, Suffolk, IP23 7AF.

Eye Salon is a friendly hair and beauty salon that has been trading for more than seven years.

Our fully trained team uses well-known, trusted brands and we all have a passion for hair and beauty.

With our large range of hair and beauty services we can adjust to suit our clients' individual needs, whatever style or age.

To book an appointment call us on 01379 871 996  
or visit our website to book online!  
[www.eye-salon.co.uk](http://www.eye-salon.co.uk)



# Mobile Hairdresser and Hair Extension Specialist In Horham and surrounding areas

*Available weekdays between 9am and 3pm*

Woman's, men's and children's haircuts and colouring services. 15 years experience and previous salon owner.

## **Cutting:**

Wash, cut & blow-dry - £25

Wash & blow-dry - £15

Children under 12 - £10

**Colour** (all prices include wash, cut & blow dry):

Half head foils - £65

Full head foils - £85

Toner - £10 after colouring service

Men's from £12

## **Hair Extensions**

Natural looking, real hair extensions for clients wanting fuller, thicker or longer hair. High quality, durable hair lasting 12-18 months, fitted with inconspicuous Nano-bonds.

## **Prices:**

Full head hair extensions, including fitting, shaping and styling - From £300 for added length and thickness.

Maintenance from £30

Free consultation and colour match.

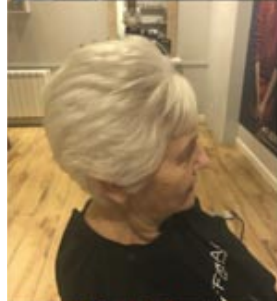
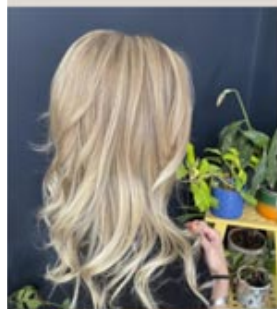
Take a look at my Facebook page:

@HairByChloeJThomas  
for more examples of my work.

**Chloe Thomas**

**07584 062280**

**White House Cottage  
Horham**







# EXPERIENCE THE WONDER

**CELEBRATE CHRISTMAS 2024  
AT HORHAM BAPTIST CHURCH**

**WEDNESDAY**  
**11**  
**DECEMBER**

## **BEER & CAROLS**

Join us at the bar for a songsong to get you in the mood for Christmas!

**FROM 7:15PM AT HORHAM  
COMMUNITY CENTRE**

**SUNDAY**  
**15**  
**DECEMBER**

## **ALL AGE CAROL SERVICE & NATIVITY**

Croissants, bacon butties & hot drinks served from 9:30am

**10:30AM AT HBC**

**TUESDAY**  
**24**  
**DECEMBER**

## **CHRISTMAS EVE CANDLELIT CAROLS**

A traditional carol service followed by festive treats

**6:00PM AT HBC**

**WEDNESDAY**  
**25**  
**DECEMBER**

## **CHRISTMAS DAY CELEBRATION**

A fun service filled with carols, stories & lots to enjoy for all ages!

**10:30AM AT HBC**



**Horham**  
BAPTIST CHURCH

[www.horhambaptist.org.uk](http://www.horhambaptist.org.uk)





# Barley Green Garage

**ONE-STOP SHOP FOR ALL YOUR MOTORING NEEDS!**



MOT



Servicing



Repairs



Air-Con



Tyres



Exhausts



Diagnostics



Batteries



Tow Bars

**ALL MAKES AND MODELS WELCOME**

**SAFE IN OUR HANDS**

With over twenty years experience in the motor trade, Barley Green Garage can offer you peace of mind that your vehicle is repaired to the highest standards.

We can offer "While You Wait" appointments, so why not enjoy a coffee and a comfortable chair while we repair your vehicle or perhaps you would prefer to have a lift home and we come pick you up when your vehicle is ready.



Barley Green Garage  
@barleygreengarage

**Tel: 01379 388 947**

Laxfield Road, Stradbroke, IP21 5JT

**[www.barleygreengarage.com](http://www.barleygreengarage.com)**

**email: [barley\\_green\\_garage@btconnect.com](mailto:barley_green_garage@btconnect.com)**

