

# **Athelington, Horham & Redlingfield NEWS**



**SUMMER 2024  
Issue No. 65**

# **SPURLING & REMBLANCE**



**MOTOR ENGINEERS  
MOT TEST CENTRE**



**Service and repairs to all cars,  
light commercial and 4x4s**

**Specialists in vehicle diagnostics**

**Free local collection and delivery**

**Courtesy car available**

**Prompt attention assured**

**Competitive rates**

**(01379) 384689**

**Open 8.00am-5.30pm Mon-Fri, 8am-noon Saturdays**

**Barley Hall, Laxfield Road, Stradbroke, IP21 5NQ**

**on the B1117 - 1¾ mile outside Stradbroke, towards Laxfield**

**I**t's been a struggle to shoehorn everything into this issue. I could easily have produced a couple of pages on the trip organised by Brian Cooper and David Whatling to the Power of the Past collection and a spread on Suffolk Open Studios, not to mention two pages on the story of how Horham got its community centre. However, we are trying to keep the mag to 44-pages as the cost of printing has soared over the last few years and we only just break even as it is. Anyway despite the limitations I hope you enjoy the latest look at life in our corner of Suffolk.

**O**ur glorious front page picture (by Jan) harks back to summers' past but is from May 2024. Tim Debenham and crew are pictured with master thatcher Dominic Meek and his team in Wilby harvesting a special crop of long straw for thatching.

A big thank you to all our deliverers, contributors and advertisers and in particular Jan for tech support & Midge Gibbons for proofreading.

Any errors are mine. *Mike Ager*

**If you would like to advertise or contribute to the magazine or have an event or organisation you would like featured contact editor:**

**Mike Ager on [mike@gn.apc.org](mailto:mike@gn.apc.org) or 01379 678835 at Hidcote Lodge, Mill Road, Redlingfield, IP23 7QU.**



**Deadlines for adverts & editorial:**

**Spring issue (Mar, April & May)**

**Final deadline February 14**

**Summer issue (June, July & Aug)**

**Final deadline May 14**

**Autumn issue (Sept, Oct & Nov)**

**Final deadline August 14**

**Winter issue (Dec, Jan & Feb)**

**Final deadline November 14**



Printed by PJ Print, The Quadrangle Centre, The Drift, Nacton Road, Ipswich, IP3 9QR. 01473 276010, [www.pjprint.com](http://www.pjprint.com).

**Athelington, Horham & Redlingfield News was founded in 2008 by Evelyn Adey and Mike Ager.**

# Dawn chorus brings

**T**he dawn chorus is a sure sign of spring and the first indication I have at Wash Farm is the song thrush in February. There's not much else going on but to hear him is a very cheering start to the day whether rain or shine, and this year it has been mostly rain. There was, however, more cheer on February 27th at Nick Johnsons' farm at Southolt when a little posse of yellowhammers could be seen sunning themselves in the winter sunshine, the males shining as bright as lightbulbs against a bare hedge. Yellowhammers gather in small flocks outside the breeding season and as the dull moulted feathers of the male wears away after the winter, it reveals him in his smart breeding plumage by springtime. Further proof of a good yellowhammer season came at the end of April when a friend asked if he could bring a small group here

for a farm walk. Doc Goodge from Worlingworth came along as extra "eyes and ears" and very good he was too. We strode off towards Caroline's wood and he picked up a mistle thrush from 150 paces. Ten pairs of binoculars swung into action and there it was, proudly perched atop a still-bare ash tree and singing loud and clear. Further on beyond Midges' barn I was relieved to hear our hedges alive with yellowhammer and whitethroat song, as well as that of the resident robin, chaffinch and wren. Relieved because I had warned our guests that farmland birding can be disappointing (but thankfully not this time), and relieved again because we had waited and waited until at last the weather improved. The walk concluded with a visit to our Barn Owl box whereupon both adults came out and I was able to get a photo of a good clutch of five



***A roadside close up of the Sparrow hawk kill.***



# cheer

*Trevor Edwards'  
latest Wash Farm  
Wildlife*

eggs. The other owl news was the survival of a tawny owl youngster which KO'd itself on a window but after looking groggy whilst I got the camera out, quickly recovered and flew away.

**F**rom my birds' eye view of the birdfeeder, the early arrivals are the great tits by the quite a few and bluetits by the dozen. Most of the birds around the garden are flying somewhere with a focus, unlike the house sparrows who are dashing about like Chuck Berry with no particular place to go. The sparrows twist and dive for the sheer love of flying, like fighter planes in a dogfight, then dive for a hole in the hedge. The bluetit is much more circumspect, alights briefly on a feeder and eats as quickly as possible. A tiny bird, they are high maintenance because they rely on just one brood of a very large number, maybe more than a dozen, and they start by laying a clutch of eggs which weighs more than the adult females' modest body weight.

**L**ast autumn, we had a visit from Sarah Hearn who, though brought up in Australia, has family connections in Eye and Melton and was driving through Suffolk via Wickham Market. Thanks to the wonders of the modern i-phone, she was able to capture superb pictures of a sparrowhawk kill right by the roadside. It is amazing that the sparrowhawk was bold enough to stay resolutely by its meal and you can actually see the feathers start to fly as it gets stuck in with the ritual plucking, resulting in the tell-tale neat circle of the feathers of the latest victim.

*Continued on page 4.*



**Above: The resident yellowhammer and the spring arrival, the whitethroat. Below: Three's company and four's a crowd at the bluetit free buffet and a very dazed young tawny owl.**



## WILDLIFE - WASH FARM

*Continued from page 3.*

A headline in the *EADT* this week in the middle of May declares Suffolk as increasingly popular place for people to move to for work or retirement. If so, the newcomers will soon get to appreciate the scent of the roadside sheep's parsley and the flowering hawthorn hedges, undoubtedly the scent of Suffolk at this time of year. This photo of hawthorn in full flower was taken at Minsmere Sluice. Not sure how many people have taken up foraging to supplement the housekeeping budget but one of the best summer drinks is the cordial made from elderflowers now at their best and it beats purchased squashes into a cocked hat.

March 18th was the day the chiffchaff arrived, my first



***Minsmere Sluice  
and the scent of  
hawthorn.***

migrant but nothing compared to the dozen or more counted by Adrian Smith dog-walking in the Hundred Lane on the following Sunday. On the



**HANDYMAN**  
**INDOOR & OUTDOOR JOBS**  
**PLUS PROFESSIONAL**  
**WINDOW CLEANING**  
**& PRESSURE WASHING**

0787 6512815 or 0784 7874999  
mpcook123@outlook.com  
www.cookspressurewashing.co.uk

**Domestic,  
Agricultural,  
& Commercial  
Pressure Washing  
& Window Cleaning**

**As numbers  
escalate, the  
question Friend or  
Foe? will be the  
next question.**



same day, five Red Deer just happened to be passing through Cranley Green when Andrew Muttok was working on Ben and Emma Hewitt's fences and roadside hedge. Being previously a gamekeeper at Helmingham, and a countryman through and through, he was able from the Reds antler growth to confirm them as three years old. The Hewitt's property there was once the home of his grandfather, Percy Muttok, a lovely man who worked on

local farms and ran a small lorry haulage business. Those who have lived in the village for a generation will still remember that bend in the road known as Muttok's Corner where in winter the downslope would be the first place to catch a frost and black ice was a problem if you weren't careful. Don't ask about muntjac, as I write these notes one has just strolled nonchalantly past the kitchen window.

*Trevor Edwards*

## **Optimal Heating**

**Father & Son Team**

**With over 30 years experience**

### **Specialist Heating Engineers**

**Oil, Natural Gas & LPG Servicing and Repairs**



**Tel: 01728 628687**  
**Mobile: 07806 660399**





# Nesting success stories

**H**ello Everyone! We've been really enjoying everything coming to life this Spring. We get so excited when the fresh Hawthorn leaves start to appear and the first Chiff-Chaff arrives. Soon after, the Blue-tits start exploring the nest boxes and the Blackbirds start collecting dried grass to start building their nests. We often find nests being built in the strangest of places! We had some successful Blackbirds fledge from on top of the scaffold boards in the garage and Wrens have made a nest in amongst some rags hanging from the garage ceiling.

We have a very friendly Robin which we call 'Boiler Robin', as he sits in the Elder above the boiler singing to us through the window! As soon as nesting season started we ordered our live mealworms and very quickly, both Boiler Robin and the garage Blackbirds realised they were on to a good thing and would come and look at us through the kitchen window, expecting us to immediately stop whatever we were doing and reach for the mealworm bag!

We are delighted to welcome back our Spotted Flycatchers, who have taken up residence again in the soffit of the house (just above Boiler Robin's Elder) and have also quickly learnt about the mealworms on offer. Last year, they successfully raised two broods so we are really hoping that this year will be the same. They're quite used to us too, so when they fly down

for the mealworms we can get quite close and really appreciate their dainty beaks and subtle plumage.

Over on the meadow we've been listening to the Blackcaps and Whitethroats and a pair of Willow Warblers that have claimed the Willow above the pond.

Earlier in the Spring, we received our delivery of supplementary Turtle Dove seed from the Operation Turtle Dove Team at the RSPB. Operation Turtle Dove is an extremely important project, involving farmers and private land owners in helping to bring back the Turtle Dove. Turtle Doves have declined by an estimated 99% since their peak in the late 1960s. Research has shown that a loss of breeding season habitats that provide seed food for the doves was the single most important factor in their decline. Turtle Doves like to feed on bare ground, so we cleared an area over on the meadow for them and also some areas around the barns.

We've not yet seen a Turtle Dove, but we have heard one a few times so we are really hoping that they are finding the food. As they are so shy, we are planning to put up the motion camera to see if we can record any feeding at our cleared areas. The RSPB have also asked us to record any other birds that feed on the seed, and we are finding that it's very popular with Linnets and Stock Doves.

We are very proud to be involved in such an important conservation project



**Tawny Babies and Henry and Edward at the Turtle Dove feeding area.**



and hope that our wild areas and supplementary feeding will provide enough food and breeding habitat to support any returning Turtle Doves.

We are pleased to report that our Tawny Owls successfully bred in our Tawny tunnel this year. We have at least two fledgelings and they're very actively hopping around the branches in the woods, talking to each other. We also believe that our Barn Owls are back in their box, but as Barn Owls breed a little later than Tawny Owls and do not fledge until fully grown, we need to wait a bit longer before we can report back!

The other evening, at dusk, we saw one of the adult Tawny Owls sitting in the branches above the bird feeder, waiting for mice and voles to appear below to clear up the crumbs. As we watched, one of the adult Barn Owls flew through the Dutch barn and appeared from behind the Tawny Owl. The Tawny Owl flew after the Barn Owl and chased it off across the meadow! It was so exciting to watch and to see both owls together so closely!

*Continued on page 8*



## WILDLIFE – COLNET CONSERVATION

### *Continued from page 7*

We've also been very busy planting yet more trees and 50 metres of hedgerow around the garden and meadow. The hedge plants are growing very quickly and already appearing up over the protectors! We have a great mix of Hawthorn, Guelder Rose, Dogwood, Dog Rose and Field Maple, which once established, will be a beautiful, diverse habitat, providing pollen, fruit and nesting sites.

On a recent trip to RSPB Minsmere, The Waveney Ringing Group were doing a ringing demonstration, not far from the visitor centre. We found it really interesting and it was amazing being able to get so close to such a variety of different birds. We especially enjoyed seeing a pair of Bullfinches, a pair of Blackcaps, and our first ever Nightingale!

For 30 Days Wild with The Wildlife Trusts, we are planning on creating hibernating areas near the ponds for newts, frogs and toads etc. We plan on using rocks and stones, sticks and earth. Being a member of the Suffolk Wildlife Trust Youth Board, Henry will be playing an active role in this and will be reporting back on our progress.

We hope you've enjoyed reading our latest conservation news and look forward to letting you know how we get on with our Turtle Doves, Barn Owls and hibernating areas in the Autumn.

*From Henry, Arthur & Edward,  
Colnet Conservation*

**Getting close to a pair of Bullfinches and a Nightingale.**





# STUMP GRINDING

**Call Tony on 07949608243 for a quote**



**Also Mini Diggers, Dumpers, Rollers  
etc for hire. Based in Denham.**

**0%  
Finance  
Available**

**Making  
Luxury  
Affordable**

**Wood Flooring  
Amtico  
Karndean  
Carpets  
Sisal  
Runners**

**Contact us today to  
transform your space**

**eye  
Flooring**



**Visit our new showroom -  
19 Church Street, Eye, IP23 7BD**

**T: 01379 870190**

**E: [info@eyeflooring.co.uk](mailto:info@eyeflooring.co.uk)**

**W: [www.eyeflooring.co.uk](http://www.eyeflooring.co.uk)**



*Summer 2024* **9**





## Ian's Private Hire

For all your taxi needs

---

Local/Long journeys  
Days/Nights out  
Airports/Cruise terminals

---

[www.iansprivatehire.com](http://www.iansprivatehire.com)  
[iansprivatehire@gmail.com](mailto:iansprivatehire@gmail.com)  
Phone: 07825 001270

## *Simply Beautiful By Anne*

*Weddings, Bridesmaids,  
Ball Gowns, Curtains,  
Cushions, Alterations  
and much more  
Free Estimates Given*



*Magnolia House,  
Wilby Rd, Stradbroke  
Tel: 01379 384097  
Mob: 07944 894757*

## WILDLIFE - NEW READING WOODS GROUP

# Working at Pound Lane woods...

The wood has had a spring clean and tidy up. The rain and cold finally stopped and we met at the wood for a session cutting back overhanging branches and brambles. The owl box overlooking Flowerdew Meadow at the top of the woods was spring cleaned. The now vacant hornet nest was cleared out and we found evidence of previous use by owls but clearly some time ago. Hopefully they will return now there is space for them.

The wildflower meadow has been renamed "Flowerdew Meadow" as a tribute to David Flowerdew, a founding member of the group who worked tirelessly to get the woodland established.

The undergrowth below the trees is gradually dying back as the canopy develops and light levels fall. Our work concentrated on controlling the brambles on the edges overhanging the rides.

The hawthorn and apple blossom was out and now the medlar is in bloom. A drift of cow parsley is growing across the meadow, possibly following the lines of an old field drain. Cowslips are setting seed but



the buttercups are doing well with a few dog daisies out. Forget-me-nots showed in the shade at the edge of the rides. Meadow cranes bill is beginning to show on the meadow. Around the pond edge Cuckooflower was a delicate pink with the yellow flag irises about to burst.

If you visit the woods over the next few months please keep your dogs out of the ponds to allow the newts to breed.

● If you are interested in joining the New Reeding Woods Group and getting hands on experience of improving our local environment and enjoying outdoor activities please contact our secretary Peny Conway on 07495 875299.

*Peny Conway*

***Pictured, clockwise from top: owl box in need of a spring clean; work in progress; iris about to burst; cow parsley; and an old hornets nest.***



# Champagne in the sun at Horham Old School

**A**fter such a long, dark and wet winter we are delighted to welcome the warm sunny weather in The Old School garden.

We have again set aside some of the grass for bee friendly spring meadow flowers, and are keen to see if we will again have bee orchids in bloom. The trees surrounding us look magnificent in new leaf and at the time of writing the majestic Horse Chestnut trees are putting on a spectacular display of candles. This is a wonderful setting for our Sunday opening, our customers enjoy sitting in the garden for a Sunday afternoon drink. A glass

of Pimms is as popular again as last year, and we have Champagne available as well as wine by the bottle or glass, beer, spirits and soft drinks.

Thank you to all the volunteers who worked so hard to spring clean the building and to all those who have offered to repair and maintain our garden tables, trim the hedges, cut the grass and plant the garden. Thanks also go to the volunteers who run the bar and coffee morning, and to Mary, whose flowers grace the tables on Wednesday mornings.

The coffee morning continues to thrive and serves a very important role



## Dan To Earth Electrical

[dantoearthelectrical.co.uk](http://dantoearthelectrical.co.uk)

**Danny Lamb**  
Electrician

**07756 204 354**

**Horham Suffolk**

**[danlamb@live.co.uk](mailto:danlamb@live.co.uk)**

**01379 384 889**





as a daytime meeting place for the village and provides an opportunity to chat and enjoy delicious home made cake and a cafetière of coffee or a cup of tea.

The bar is open on Sundays from noon and the coffee morning takes place on Wednesday from 10.30am to noon. The Old School is available to hire, please ring Pip on 07305108698.

*Horham and Athelington Village  
Hall Committee*

### ■ D-DAY COMMEMORATIONS:

Worlingworth, will commemorate the 80th anniversary of the D-Day landings on the beaches of Normandy, France with a Special Service of Thanksgiving, Commemoration and tribute in St. Mary's Church at 6pm on Thursday 6th June 2024. The service will be led by the Reverend Ron Orams and assisted by Reverend Chrissie Smart. Watch the Tower for the Union Flag and listen for the chiming of a bell from 5pm. to call you to the service. There will also be a display of commemorative items and flowers. Pageantmaster Bruno Peek says: "D-Day was a monumental campaign to rid Europe of Nazi horror, and the 80th anniversary of this ... deserves the recognition and gratitude of our country. Please join us ... to commemorate the sacrifices made by so many in our name". **Bert Stanford**



## Wilby Pre-School 'Where learning starts'

**Places available for 3 and 4 year olds for up to 30 hours a week**

- Flexible 3 hour sessions
- Forest School learning
- Wrap around care available
- Exciting hands-on learning



**FROM SEPTEMBER 2023**  
Contact us to arrange a visit today  
01379 384708 [www.wilbyprimary.org.uk](http://www.wilbyprimary.org.uk)

# Fond farewell to founding

**F**irstly may we remember Colin Grosvenor (aged 80), who used to live in Horham, and continued as a member. He was taken from us quite suddenly although he had been unwell for sometime. His funeral was on Saturday 27th April. in St Mary's. The service was conducted

by The Revd. Canon Eleanor Goodison, and the eulogy was by James his stepson. The Community Centre bar took £150, at the wake, and was match funded and sent to the Pulmonary Fibrosis Trust in memory of all the work Colin undertook to get the Community Centre off the ground,

and constructed. He was the original chairman of the then newly-formed Horham Village Hall Trust.

Our love to his widow Jill, and his daughter Sharon and her children, and we remember Andrew, his late son; and Jill's father and mother Walter and Joan Goodchild who live in our memory.

The John Kirkum Quiz tested all our little grey cells, and we made £150 for funds. A Stradbroke team won! Thank you to Neil and Maryann for the refreshments.

The Tidy Up Saturday went well - the sausage sizzle was very welcome!

Kay is going to open the Community Centre bar early on



**Susan Whymark  
Funeral Service Ltd**

Independent and Family Run

*Serving Eye, Harleston, Diss and the surrounding areas since 2004*

We offer a range of services to suit your individual needs

- Funerals tailored to your needs and budget
- Full estimates given at time of arrangement
- Pre-Paid Funeral Plans available
- Direct Cremations
- Support Groups
- Memorials

We provide an efficient but friendly service through our professionally qualified staff

- Chestnut House, 12 Progress Way,  
Eye, Suffolk, IP23 7HU  
**Tel: 01379 871168 (24hr)**
- Ley House, 11a London Road,  
Harleston, Norfolk, IP20 9BH  
**Tel: 01379 851253 (24hr)**
- Denmark House, 1 & 2a Carmel Works  
Park Road, Diss, Norfolk, IP22 4AS  
**Tel: 01379 831332 (24hr)**



**See our customer reviews at**  
[www.susanwhymark.co.uk](http://www.susanwhymark.co.uk)      Email: [susan@susanwhymark.co.uk](mailto:susan@susanwhymark.co.uk)

# chairman Colin Grosvenor

Friday evenings twice a month, 24th May, 7th June, 21st June and 19th July - for those who have "little'uns" - and everyone else who enjoys a summertime early evening drink.

At our recent meeting we were very pleased to hear that Reeding Woods have offered to plant some specimen trees. The late Bob Flowerdew left money for this purpose; and we look forward to seeing the old bonfire site transformed into a lovely woodland space.

Thank you to all the volunteers who keep the grounds tidy, the bar staff and the patrons! Our next meeting will be the AGM on Tuesday 9th July at 7.30pm. All are welcome.

Coming up:

- Yard Sales Trail - Saturday June 8th, 9.30am-2pm. More info. Neil 07814875745.
- Wheels on Wednesdays - 5th June, 3rd July and 21st August.
- Craft Fair - Saturday 7th September.
- Open Mic Night - Saturday 14th September.
- Suffolk Punch Caravans - 19th-23rd September.

*Margaret Streeter  
(Secretary) on behalf of  
Horham and Athelington  
Community Council and  
Horham Village Hall Trust.*

## UNDER ONE ROOF HARD LANDSCAPING SERVICES

**Specialist in all types of paving and hard landscaping**

**Driveways, patios, ornamental garden walls,  
drainage solutions and fencing**

**Family run business with more than 30 years of  
on-the-job experience**

*Fast friendly professional*

*Fully insured and all work guaranteed*

**Call Mark for a friendly visit with a free quotation  
01379 677027 or mobile 07768636618  
[www.underoneroof.me](http://www.underoneroof.me)**





*Heuchera provide ground cover and helps to suppress weeds.*

## GARDENING WITH ANDY

# Our glorious

Summer seems to have started well and the borders should be coming into their own.

Hopefully you have an abundance of colour and can create a traditional Cottage garden with shrubs, herbaceous perennials, bulbs and annuals.

For those of you who have a smaller garden, keep it simple, practical and easy to maintain. Look for bold plants in pots like Agapanthus, the African Lilly. It likes to be pot-bound, has no pests and is colourful with either blue, pink or white flowers depending on what variety you choose.

## YOUR RELIABLE LOCAL PLUMBER



Anglian Water Approved

**Mark Jardine**  
Plumbing & Heating



- All Household Plumbing, Large or Small
- Full Bathroom Installation
- Domestic Heating, Radiators, Pumps etc.
- Water Softeners
- All Work Anglian Water Certified
- Free Estimates & Fully Insured
- 24 Hour Emergency Call Out

Tel: 01728 628291    Mob: 07854 924 801  
Email: [mgjardine@btinternet.com](mailto:mgjardine@btinternet.com)

# summer

A personal favourite of mine is the Geum, common name avens. It is an excellent plant for summer and it comes in a range of colours - red, orange, yellow, peach and pink. It has no real pests, is rabbit and deer resistant and will attract bees and butterflies. A small to medium herbaceous perennial, best placed towards the front of a bed or border.

A good plant for ground cover which also helps to suppress weeds is Heuchera, common name coral bells. This small front border ground cover plant has some startling new leaf colour introductions from purple, bronze, pink, apricot, lime and will even provide small stalk red, pink or white flowers depending on variety.

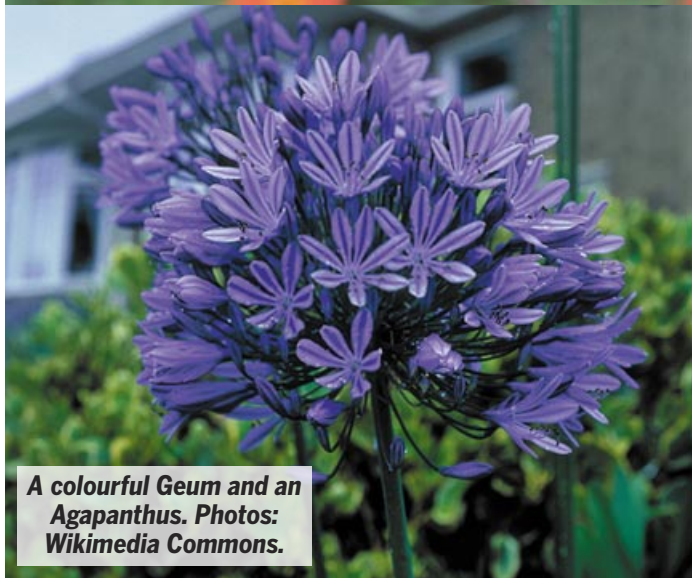
Keep up with rose deadheading to prolong and create new flower shoots throughout the Summer and into Autumn. You may give a second feed to roses to provide a boost after the first flush of flowers, but if possible mulch them as well to retain moisture and suppress weeds.

You don't need me to tell you how important it is to water in the Summer months, particularly your bedding

annuals in borders, beds, pots and hanging baskets. It is best to water first thing in the morning or early evening as less water can be leached out of the soil by the sun.

To help with pots and hanging baskets you can add swell gel granules that swell and help to cut down on watering by absorbing their own weight in water.

*Happy gardening everyone*  
*Andrew Peters*



**A colourful Geum and an Agapanthus. Photos: Wikimedia Commons.**

# Packed school diary

**T**he school diary is packed with lots of exciting learning events and more fun additional activities for the children, organised by our Friends of School Association (FOWSA) who have been very busy over the last academic year organising a whole range of events.

In the Spring term they organised an Easter Egg Hunt (involving a visit from a six-foot Easter Bunny) and a chocolate tombola event which was very popular and great for raising funds. At the start of the Summer term FOWSA ran a mini marathon event to coincide with the London Marathon. Even though it was a weekend event,

lots of children took part enthusiastically about keeping fit and raising funds for the school!

FOWSA have also organised a Bingo night and plans for the Summer Fair on Friday 5th July at 3pm, are well under way. Our brass, recorders and gymnastics groups will all be performing at the fair as part of the entertainments planned.

World Book day in March was lots of fun. All classes took part in workshops provided by author James Campbell and we had a great time dressing up as our favourite book characters. Also in March, Red Nose Day at Wilby was crazy hair day, and

## **Paul Durrant & Son Ltd Carpentry Services**

### **MANY ASPECTS OF CARPENTRY**

- Kitchen fitting
- Fitted wardrobes
- Storage solutions
- Window & door replacements
- Timber-framed sheds & home offices

Office: **01379 678485**

Email: **pauldurrantandsonbuilders@gmail.com**  
or **joindurrant75@gmail.com**

For advice call John: **07894 551485**





## WILBY SCHOOL

again this term, aiming to raise another £100 through a face-painting/body-tattoo event they are organising. They are also working with FOWSA to develop two outdoor Quiet Areas for

this year the hair-styles were more outrageous and eye-catching than ever.

Our Easter Service in St Mary's Church Wilby was a really joyous affair and very well attended by parents/carers and members of the wider school/church community.

Each term every class has enjoyed at least one trip in order to extend topic learning and sporting skills. This term years 3 and 4 had the opportunity to go on a residential trip. They had a fabulous time at Thorpe Woodlands and it was wonderful to see how this opportunity really increased their self-confidence and resilience. Also this term, our Y6 will visit London and years 5/6 have a full-day of water sports at the Whitlingham Broads Water centre in Norwich to look forward to. Wren Chicks are off to the Sea Life Centre and Wren Class are booked to visit Foxborrow Farm.

We continue to develop links with new Hope Primary School in Kenya. After raising a wonderful £158 for the New Hope School and Orphanage last term, our School Council are at it

children to use at break times as part of their aim to highlight the importance of mental health.

Further developments to our EYFS (Pre-School and YR) outdoor classroom are planned this summer including an extended under-cover area and lots of new exciting outdoor furniture and equipment.

Congratulations go to Mr Haynes, our Year 5/6 teacher, who has been awarded the Primary National Computing Award by BCS the Chartered Institute for IT, in recognition of his outstanding work with children.

There's lots happening musically at Wilby: in March Kingfisher Class produced an amazing musical in celebration of the Greeks; and in July Owl Class will be performing their environmentally-focused musical.

Our pupils continue to achieve excellent levels in terms of academic progress but our greatest celebration is the fact they love coming to school.

***Roisin Wiseman (Headteacher  
Wilby CE Primary School)***



# GETTING INTO THE

**T**he best acts in the UK perform at the Red Feather Club's charity fund-raising dances, and this year's season kicked off in April with the club's resident swing band Skyliner. It was another sell-out dance, providing funds for the museum and its upkeep.

Open days, the last Sunday of the month March to October, kicked off with a bang. Volunteers stopped counting at 250 visitors. And there are more great events on the horizon at the Red Feather Club.

The next dance, on Saturday June 29th, features, back by popular demand, Memphis Lee and his Creepers with guest DJ the Jive Bomber and resident

DJ AndyAV8. The following Sunday is Americana Day, the biggest open day of the year at the Red Feather Club, starting from 10am, with hot rods, customs, bikes, military vehicles, hot and cold food, re-enactors, live entertainment from Rhianne Kelly and Kenny Lovett with DJ support, vintage stalls and of course the incredible museum.

Saturday September 28th dance brings one of the biggest, if not the biggest, act ever to appear at the Red Feather Club top rhythm and blues singer Laura B with Ian Gillion Jr and band. Laura plays all over the world and we are very fortunate to have her perform at the home of the 95th.

- **Friendly Invasion:** The Red Feather Club will be hosting another Friendly Invasion on Saturday 13th July. Harleston Players are teaming up with Metfield-based singing group, Station 366, plus swing dancers from the RFC, to create Friendly Invasion - a show about the arrival of the USAAF to this area and the ways in which the presence of thousands of Americans influenced life in the region. The performance is at 7.30pm. Tickets on sale [www.ticketsource.co.uk](http://www.ticketsource.co.uk).





**Clockwise from top left:  
Station 366 at an open  
day; Memphis Lee; Laura  
B; dancing at the RFC;  
and Skyliner's singers.**



# SWING ...

Already booked for 2026 are the Biscuit Town Swing Band and Boogie Woogie phenomenon Cody Lee. Watch this space for details coming soon on future events.

Other events coming up include fundraising dances on Saturday July 27th for the 96th Bomb Group (Snetterton Heath) and on Saturday October 26th for Redlingfield.

You can even learn to dance to music from the 1940s and 1950s at the Red Feather Club. There are friendly fun lessons on Monday evenings (7pm-9.30pm, £2.50 per person). More details from Duncan 07771 675351 or Natalie 07949 541079. Beginners are welcome.

*Andy Garner*

● **The Red Feather Club Museum** - Public Open Days 10am-4pm the last Sunday of the Month from 28th April to 27th October. The museum at Coldhams Hill, Denham, IP21 5DG, is run by the 95th Bomb Group Heritage Association (Charity No: 1119769). Visit: [www.95thbg-horham.com](http://www.95thbg-horham.com). Contact: [enquiries@95thbg-horham.com](mailto:enquiries@95thbg-horham.com).





## WHAT'S ON

### June Weekends

**Suffolk Open Studios:** Artists across the county open their studios each weekend in June ([www.suffolkopenstudios.org](http://www.suffolkopenstudios.org)).

### Sunday 2 June

**Steam Railway Day & Old Ram Vintage Tractor Club visit:** Mid Suffolk Light Railway.

### Wednesday 5 June

**Redlingfield Coffee Caravan:** 10am-noon.

**Wheels on Wednesdays:** Horham Community Centre, 8pm.

### Thursday 6 June

**D-Day 80 Years on Service of Thanksgiving:** St. Mary's Church, Worlingworth, 6pm.

### Saturday 8 June

**Horham Yard Sales Trail:** 9.30am-2pm. More info. Neil 07814875745.

**Pub on the Green:** 6-11pm, Doorstep Green.

**Comedy Club Night:** The Bank, Eye, £14.

### Saturday & Sunday 8 & 9 June

**Eye Open Gardens Weekend.**

### Sunday 9 June

**Steam Railway & 'O' Gauge Models:** MSLR.

### Saturday 15 June

**Eye Sustainable Travel Event:** Eye Community Centre, 10.30am-2.30pm.

### Sunday 16 June

**Diss Carnival Parade & Fun Day.**  
**Music in the Gardens with Pat Reyford and his Symphony Five:** Helmingham Hall.  
**Steam Railway & Art Exhibition Day:** MSLR.

### Thursday 20 June

**Topette:** Wingfield Barns, £17, 7.30pm.

**The Lesson (15):** Stradbroke Cinema.

### Saturday 22 June

**Tyger O'Connor:** The Bank, Eye, £10.

### Sunday 23 June

**Steam Railway & East Anglian Practical Classics Day:** MSLR.

### Saturday 29 June

**Sotterley Country Fair:** Sotterley Hall, Beccles, 10am-5pm.

**Dance:** Memphis Lee & his Creepers guest DJ Jive Bomber, Red Feather Club.

### Saturday & Sunday 29 & 30 June

**Heveningham Hall Country Fair.**

### Sunday 30 June

**Americana Day:** music, stalls, re-enactors & vehicles, Red Feather Club.

**Rocking Foxes - R'Occold:** DJ Crazy Nadge, Occold Village Hall, 2-5pm, £8.

**Steam Railway & Vintage Bus Day:** MSLR.

**Music in the Gardens with Jax&Co:** Helmingham Hall.

### Wednesday 3 July

**Redlingfield Coffee Caravan:** 10am-noon.

**Wheels on Wednesdays:** HCC, 8pm.

### Sunday 7 July

**Redlingfield Annual Dog Show & Summer Fayre:** Doorstep Green. Joint village event. All day and evening. Pub on the Green open.  
**Steam Railway & Land Rover Day:** MSLR.



**The Horticulturalist**  
 ANDREW PETERS & ETHAN PETERS

[andrewpeters65@hotmail.com](mailto:andrewpeters65@hotmail.com)

Mobile: 07956651157

Free Estimates

City and Guilds Qualified  
 Over 35 Years Experience  
 Private and Commercial

## WANTED

**All old games consoles:  
 Xbox 360, PS1, 2, 3 or 4.  
 WORKING OR NOT.**

Contact Glenn  
[miller81@btinternet.com](mailto:miller81@btinternet.com)

### Saturday 13 July

**Friendly Invasion:** Harleston Players and Station 366, 7.30pm, Red Feather Club, [www.ticketsource.co.uk](http://www.ticketsource.co.uk).

### Sunday 14 July

**Music in the Gardens with Swing Machine Big Band:** Helmingham Hall.  
**Steam Railway & Museum History & Research Day Plus Harley Owners Group Icen Chapter visit:** MSLR.

### Thursday 18-Sunday 21 July

**Country Music Festival:** Debenham Leisure Centre.

### Saturday 20 July

**Down the Line:** Northern Soul, Motown and 60s R'n'B, Eye Town Hall.

### Sunday 21 July

**Steam Railway & Suffolk Craft Fair:** MSLR.

### Saturday 27 July

**Dance:** fund-raising for the 96th Bomb Group (Snetterton Heath), Red Feather Club.

### Sunday 28 July

**Public Open Day:** Red Feather Club.  
**Steam Railway & Norfolk & Suffolk Narrow Gauge Modellers Day:** MSLR.  
**Music in the Gardens with The Jackson Line:** Helmingham Hall.

### Saturday 3 August

**Pub on the Green:** 6-11pm, Doorstep Green.  
**The Silhouettes:** Eye Town Hall.

### Sunday 4 August

**The Festival of Classic & Sports Cars:** Helmingham Hall.  
**Steam Railway & Mogfriends (Morgan) Car Club Day:** MSLR.

### Wednesday 7 August

**Redlingfield Coffee Caravan:** 10am-noon.  
**Wheels on Wednesdays:** Horham Community Centre, 8pm.

### Sunday 11 August

**Steam Railway & Big Bus Day:** MSLR.

### Saturday & Sunday 17 & 18 August

**Framlingham Country Show & Framlingham We Love Dogs:** Framlingham College.

### Sunday 18 August

**Steam Railway & BMW & Royal Enfield Motor-cycles Day:** MSLR.  
**Music in the Gardens with The High Points:** Helmingham Hall.

### Wednesday 21 August

**Wheels on Wednesdays:** HCC, 8pm.

### Sunday & Monday 25 & 26 August

**Model Mania & Hornby Collectors Club Days:** MSLR.

### Sunday 1 September

**'Everything Goes' Day:** MSLR.

### Saturday 7 September

**Craft Fair - Horham.**  
**Pub on the Green:** 6-11pm, Doorstep Green.  
**Ska, Rocksteady & Early Reggae:** Eye Town Hall.

### Sunday 25 August

**Public Open Day:** Red Feather Club.

### Wednesday 4 September

**Redlingfield Coffee Caravan:** 10am-noon.

### Saturday 14 September

**Open Mic Night:** Horham CC.

### Sunday 15 September

**Autumn Plant Fair with Artisan Market:** Helmingham Hall.

- 
- **Eye Cinema** - Eye Community Centre, advance tickets from The Handyman. To reserve tickets call Kit Brinkley on 07947 414 968
  - **Bank Arts Centre** [www.thebankeye.org](http://www.thebankeye.org)
  - **Helmingham Hall Gardens** [www.helmingham.com](http://www.helmingham.com)
  - **Mid-Suffolk Light Railway** [www.mslr.org.uk](http://www.mslr.org.uk)
  - **Redlingfield** [www.redlingfield.suffolk.gov.uk](http://www.redlingfield.suffolk.gov.uk)
  - **Stonham Barns** [www.stonhambarns.co.uk](http://www.stonhambarns.co.uk)
  - **Suffolk Owl Sanctuary** [www.owl-help.org.uk](http://www.owl-help.org.uk)
  - **Stradbroke Cinema** Stradbroke Community Centre, 7 for 7.30 pm [www.stradbrokeonline.org.uk](http://www.stradbrokeonline.org.uk)
  - **Wingfield Barns** [www.wingfieldbarns.com](http://www.wingfieldbarns.com) tickets via [www.wegotickets.com](http://www.wegotickets.com)

# The history of lost farms

The Adair estate records give clear evidence of two farms on Redlingfield Green in the late 1800s, but an advert in the *Ipswich Journal* in January 1761 gave details of a 15-acre farm for sale in the



occupation of William Browning situated on Redlingfield Green. So where were these three farms?

The 1884 Ordinance Survey Map very clearly shows the position of three farmsteads.

Firstly the 15-acre smallholding on the Green to the south of Horham Road. Secondly the farm referred to as Green Farm during the 1800s, to the north-east of the green and thirdly the farm sometimes referred to as the Horham Road Farm at the north-west.

It would appear that the farm advertised in *Ipswich Journal* was purchased by the Adair estate, because on their rental records of 1762 William Browning is paying a rent of £14 to the estate at a time when the farm rents were in the region of £1 per acre. By the time of the tithe apportionment in 1839 the farmhouse had been split into three farm

labourer's cottages and the land had been absorbed into the farm to the west of the green. The farm buildings and three cottages are shown on all maps into the 20th century and the residents of the cottages are all listed on the census and in fact there were still two families residing there in 1939. The whole farmstead has long since disappeared and the site is now covered with trees on the corner of the Horham Road opposite Pear Tree Cottages.

There is much more historical information to be found regarding the original Green Farm starting in 1798 when John Wilson paid £8.2.0 land tax. John Wilson was born in Redlingfield in 1772 the first born son of Edward and Ann who had moved to Redlingfield from Worlingworth at about that time so did not appear on the list of rents paid in 1762 to the



# of Redlingfield Green

Adair estate. Edward Wilson was one of the two farmers eligible to vote in 1790 due to the fact that Edward owned 1 acre of land elsewhere in Redlingfield. The other tenant farmers farming larger farms in Redlingfield had no right to vote because they were not landowners! After Edward's death in 1797 John farmed Green Farm until 1821 when an advert in Ipswich Journal advertised the sale of all his livestock and farm machinery. Another small item in the Suffolk Chronicle in April 1820 mentions that James Alward was acquitted of stealing a loaf of wheaten bread, the property of John Wilson of Redlingfield. The next tenant of Green Farm was George Cracknell the son of George Cracknell of Redlingfield Hall. He farmed there until his death at the age of only 53 due to injuries caused by falling out of his pony gig. The 1851 census shows that his widow Mary Ann was farming the land with the help of her 29-year-old son. In 1852 her daughter Betsy Rebecca married William Wardley who had been farming nearby on Redlingfield Road, Horham. By 1861 William was farming Green Farm with Mary Ann still living in the house. Betsy Rebecca died in 1875 and William got married again in 1877 to Betsy's niece Betsy

Rebecca Cracknell. By 1879 William and Betsy had moved to Eye and Edward Goldspink had taken on a 15 year tenancy for Green Farm. The 1881 census tells us that Edward's son George is living next door and farming 317 acres and his father Edward is now living in Wilby. This must mean that George is farming both the Horham Road Farm and Green Farm. The same census records that two farm workers and their families were living in the Green Farm farmhouse. A few years later the farmhouse was demolished and replaced with a pair of cottages which are now called Peartree Cottages. It is difficult to know exactly when this happened, but the different editions of the Ordinance Survey maps suggest that it was sometime between 1884 and 1888

Finally we come to the farm that we now know as Green Farm. Historical records show that this farm passed through the hands of three generations of the Barnes family. In 1761 the first John Barnes was paying a rent of £42 to the Adair estate and in 1798 was paying Land tax of £13.14. When he died in 1814 his son John took on the tenancy and was recorded as the occupier of the farm on the tithe apportionment in 1839 and also the resident farmer on the 1841 census.

*Continued p27*



The old farm house  
destroyed by fire in 1943



JUBILEE  
BAPTIST  
CHURCH

# You're Welcome!

We're a small Church, with a big heart, serving a Great God


[www.jubilee baptist.co.uk](http://www.jubilee baptist.co.uk)


email: [jubilee baptist@occold.com](mailto:jubilee baptist@occold.com)



JUBILEE  
BAPTIST  
CHURCH

Sundays 10.45am in the Chapel or Village Hall,  
Occold, Eye, IP23 7PL


 @jubilee\_baptist


 [www.facebook.com/JubileeBaptist1](http://www.facebook.com/JubileeBaptist1)

 [www.instagram.com/jbcoccold](http://www.instagram.com/jbcoccold)

We have  for each other

We grow together 

 We worship Jesus

We share God's message 

**We'd love to see you ...  
why not give us a look? 😊**

For any information not online or any questions please contact Rob 07504 927399

**Giving glory to God and helping everyone have a strong relationship with Jesus**

*Continued from page 25*

He in turn died in 1845 and was replaced by his son John who is recorded as farming there on the 1851, 1861 and 1871 census. During John's tenancy happenings on the farm appeared several times in the local press. There was a break-in at the farm in 1849 which was featured in the Spring 2019 edition of this magazine. In 1863 a farm worker lost his balance on top of the threshing machine and his arm was ripped off by the beaters. Then in 1874 Thomas Mattock died as a result of being kicked by a horse. In 1877 John's son John, together with some other Redlingfield residents were fined for being drunk at the Crown Inn. Earlier that year John's wife Rachel had died, and in September 1878 the *Framlingham Weekly News* published an announcement for the sale of the

livestock, farm equipment and household furniture. John and his son then moved to Ipswich. The *Ipswich Journal* gave an account of his sudden death in 1880 due to heart attack in the Bethesda Chapel at the Sunday service.

George Goldspink took on the tenancy in 1878 and as mentioned earlier the old Green Farm became merged with this one, and the original three farms finally became one. When George Goldspink renewed his tenancy agreement in 1895 it was for a single farm named Green Farm which is still there today, albeit with a new farmhouse due to the old one being destroyed by fire when a plane crashed beside it in 1943. For those who don't know the story, details can be found on the history section of the village website.

*Stephen Ling*

#### ■ PLANNING:

**GRANTED:** Application to erect a shed and install ground mounted solar panels at **Low Meadow, Horham Road, Athelington, IP21 5EJ** (DC/24/01443 & DC/24/00005).

Planning information from Midsuffolk District Council <https://planning.baberghmidsuffolk.gov.uk/online-applications/>



■ **MUSEUM VISIT:** More than 30 'Friends of Horham Bygones Rally' visited what is probably one of the most extensive farm machinery collections in the UK earlier this year. The group visited the Power of the Past collection accumulated by farmer Bill Kemball and family over 60 years. As well as agricultural machinery, there are cars, trucks and an exhibition of the history of fashion.

*Brian Cooper*



## REDLINGFIELD & OCCOLD WI

■ **REDLINGFIELD & OCCOLD WI:** Our March meeting was a craft evening led by one of our members. We enjoy having some meetings where we can do something practical and spend time socialising. This was one of those evenings where we made lavender heart bags (pictured) based on the WI 'show the love' campaign for the environment.

In April we welcomed a local author, Jenni Keer. Jenni has become a very successful author of commercial women's fiction. She has been nominated for historical novel of the year for her book 'No. 23 Burlington Square', which is in the Kindle top 100. She explained how she decided to try writing for a living when she was a mum of four young boys. It took her nine years to become a published author: she said you have to

have a thick skin and accept feedback and criticism. She was offered a two book deal in 2018 by Harper Collins and 'Lucy Baker' and 'Maisie Meadow' were born. 'Maisie' is based on the antiques world, so Jenni was welcomed to TW Gaze in Diss to do her research. Jenni's degree is in history, so she is now writing historical fiction; and she enjoys doing the research for these.

Jenni was an informative and engaging speaker, much enjoyed by all.

Our May meeting was our Resolution meeting where we agree the resolution to be adopted by the National Federation at the AGM in June. This year it is Dental Health Matters and the NFWI are calling on the Government to increase investment in the training and retention of dentists and to review the inadequate



# Cowhams

*"For today's automotive demands"*





Scan or visit  
[www.cowhams.co.uk](http://www.cowhams.co.uk)  
**01379 388 999**  
[enquiries@cowhams.co.uk](mailto:enquiries@cowhams.co.uk)

# theWI

## INSPIRING WOMEN

NHS contracts in order to ensure everyone can access an NHS dentist. We invited our local councillor Lucy Elkin to talk to us about our local provision and heard some sorry tales of local people struggling without dental care. We discussed how little treatment you can actually get even if you are lucky enough to be registered with an NHS

dentist and how costs can rocket for the types of treatment that may follow the regular check-ups, even making this inaccessible to many. After our discussion we lightened the evening with cheese and wine.

We usually meet every month on the first Wednesday of the month in Occold Village Hall at 7.30pm. If you would like more information about our activities please contact Sara Hampson (President) on 01379 678868, or just come along to a meeting. We look forward to welcoming you.

**Gill Chapman**



# T.L. PLANT HIRE

***If you are in a hole...  
...we'll dig you out***

**07881  
642232**

**MINI & MICRO DIGGERS  
DUMPERS • BREAKERS • MIXERS  
TELEPORTERS • SMALL PLANT  
SCARIFIERS • TURF CUTTERS  
WACKERS • ROTAVATORS  
STRIMMERS • TOOL HIRE**

**tom@tlplanthire.co.uk**

*Diggers can be provided  
with operator, if required.*

Bridge House, Denmark Hill, Palgrave, Diss IP22 1AB



# A sports fan's guide to

**W**hen I was young I guess I inadvertently made the decisions that affected my potential for future happiness.

Youngsters have choices to make when they start watching sport. Is this something I enjoy? Which ones do I follow? What part of my life is this going to become? Which sports do I attempt to play? There are numerous questions to find answers for.

Football and cricket were always my favourites. Darts and, in those days tennis, table tennis and snooker, also appealed. I basically played Rugby Union because no-one would give me a chance to play football regularly. Disappointing first round defeats in school competitions in tennis and table-tennis circa 1978 told me I had no natural talent at those games, as both players who beat me were walloped in their next game. I kept playing for the rest of my schooldays

but never saw an obvious improvement. Now I play bowls mostly for fun knowing I'm no better than mediocre.

In my late twenties, when I wasn't working, I played football for Elm Farm FC every other Sunday for about four seasons. We were one of the least successful teams in the South Norfolk Sunday League, if not the worst. We took some horrible beatings. I remember an 18-1 at Gala Sports in Thetford, they had five Ridgeons Eastern League players apparently, and a 19-1 defeat at Mettingham, the nineteenth a great header by yours truly. I scored twice in my career at the right end, both against Withersdale YC Reserves in the same game. How bad must they have been on that day?

All not so good things end. The club folded after a glorious second from bottom season. In that season I turned up to the home game with fellow bottom team Hoxne Reserves to be told I was one of three subs. Three subs? We had played the first-half with nine a few weeks before, if we had a sub at any time that season it was a luxury. We won 7-1 and none of the three subs came on.

Subsequently no one rated me as a footballer until I was in my forties playing friendly five-a-side games on Monday nights. Friends were then kind about my finishing and passing ability. Maybe I matured late.

The young me became a fan rather than serious competitor. The choice

## G.G. EVANS

**Pest Control Services**

**07795 177695**

**01379 608932**

**info@ggevens.co.uk**

**MOLES, RABBITS,  
WASPS & MORE**





# all things mediocre ...

was to support local teams or become a glamour club fan. Ipswich Town were decent in the late 1970s and I would have always followed them I believe as I found the number of Liverpool, Manchester United and Leeds fans around at the time bewildering. At the time it seemed a good choice but since about the mid 1980s maybe not so good.

Being English and following the national teams in football and cricket is also a bit of an ordeal. The occasional good day but ultimate disappointment has been the result of that half a century of interest.

One thing sport taught me as a fan who chooses not to support the stars, is that there are more snakes than ladders in the boardgame of life. (Captain Sensible, circa 1984).

The last one and a half Ipswich Town seasons may seem like constant ladders but the worst result in our

history versus Maidstone United felt like the big snake from square 87 down to 28. Why the worst performance of the season had to be made in the 1-0 defeat at Carrow Road also hissed me off. Who says you can't knock the soul out of the best of things if you are negative enough?

Cricket was the sport I played. I got in the school team and was lucky we had at least five teachers who were keen, one played for Suffolk. We had a Pupils and Teachers side and we played in the Burras League against club sides on Wednesday evenings. When I was sixteen I starting playing for Eye and District twice a weekend in the summertime for about a quarter of a century.

I was reliable more than spectacular. As a top-order batsman I could hang around and allow the proper players to make the significant contributions. My underused bowling was mundane but occasionally effective. I had good reactions close to the wicket but was non-athletic and trod water over the ground. My running between the wickets was perhaps considered a weakness and I heard 'Throw it at the fat boy's end' or something offensive or more blunt quite a lot.

Still there are a lot of games in the sports jungle out there and I found one in cricket where I could at least compete on a small level. I'm glad I did play reasonably competitively and looking back they were good times.

*Ian Crane*



## REDLINGFIELD PARISH MEETING

### AGM 2024:

■ **THE COUNCIL:** **Chair:** Adrian Smith.

**Treasurer & Sec:** Janet Norman-Philips.

### ■ **GUESTS:**

Mid Suffolk District Councillor Lucy Elkin gave a report on her first year as a councillor. Suffolk County Councillor Andrew Reid submitted a written report.

■ **CHAIR'S REPORT:** Adrian thanked everyone who rallied round during and after Storm Babet. He said "work has already started on trying to prevent future flooding. Ditches and waterways have been dug out to a great depth, especially along the Low Road and our thanks must go to Drew Abbott, Trevor Edwards and Graham Abbott for all their help. There is much work to be done but as we all know this takes time, but please be assured the background work continues and we will

keep you all informed of the progress". With help from the PCC [Parochial Church Council] secretary, Janet managed to secure another hardship grant which was distributed to several households in the village. He added: "The village committee and PCC now work closely together to help each other." He especially thanked "secretary and treasurer Janet for all her continued hard work". Andrew Howlett has donated a new gatepost to put in at Doorstep Green. A big early autumn tidy-up on the Doorstep Green is planned.

■ **FLOODING:** Lucy Elkin said Environment Agency experts were happy to meet with farmers and landowners for ways to alleviate flooding as were the Highways Department. Janet pointed to airbrick covers and re-usable 'sausage-

# FUN DOG SHOW & VILLAGE FAYRE

## Redlingfield Doorstep Green

### SUNDAY 7th July 2024

**Dogs from 10am ● Fayre from 1pm**

**Contact Alison 07817 207462**

**Raising funds for Redlingfield church & village**

**Details will be available on [www.redlingfield.suffolk.gov.uk](http://www.redlingfield.suffolk.gov.uk)**



type' flood barriers as affordable options for householders. The village has a £1,000 grant from Lucy to spend on flood prevention.

■ **COMMITTEE:** Graham Abbott resigned from the village committee but will still be happy to help out. Existing committee members: Andrew Abbott, Katie Abbott, Susan Chapman, Allan Chapman, Will Edwards, Lesley Rose, Emma Hewitt, Manday Miller and Adrian Smith were all unanimously re-elected. Mike Ager & Janet Norman-Philips were unanimously elected to committee. Janet was also unanimously re-elected as treasurer and secretary/clerk. Adrian Smith was unanimously re-elected as chair.

■ **NEIGHBOURHOOD WATCH:** Adrian Smith hopes someone will take on the job of Neighbourhood Watch co-ordinator.

■ **FLY TIPPING:** Katie Abbott said there had been an increase in fly tipping. Lucy Elkin said it should be reported on the Suffolk County Council website ([www.suffolk.gov.uk](http://www.suffolk.gov.uk)).

■ **DOORSTEP GREEN:** Janet is talking to play equipment firms, we want to involve youngsters. A new play area would be approx. £40k-£60k. Help fundraise when you shop online - it will cost you nothing <https://join.easyfundraising.org.uk/redlingfield-doorstep-green>. A composting toilet is still being considered though flood risk needs to be taken in to account.

■ **DOG SHOW:** Helpers are needed for Redlingfield Dog Show and Summer Fayre. Alison Smith asked for jam jars filled with things for youngsters (toy car, ball, sweets etc) for her stall.

**Mike Ager**

Do you OR your organisation need help with  
study or apprenticeship costs such as:-

Books

Course-fees

Equipment

Specialist Clothing

Are you under 25 and live in EYE, ATHELINGTON,  
HORHAM OR BEDFIELD

The Eye Grammar School Fund  
may be able to help!

Meetings to award grants are held in January, April, July and October  
For more information contact

Clerk to the trustees: Susan Whymark

[eyegrammarschool@gmail.com](mailto:eyegrammarschool@gmail.com)





**Lucy Elkin** (Eye, Occold and Redlingfield) 07928 512590  
[lucy.elkin@midsuffolk.gov.uk](mailto:lucy.elkin@midsuffolk.gov.uk)  
[www.facebook.com/CllrLucy/](https://www.facebook.com/CllrLucy/)

### ■ MAKING ROOM FOR MEADOWS:

Mid Suffolk District Council looks after a number of public spaces around the district – from small greens to large public parks. Now the sun is (finally!) shining, I wanted to talk about how these areas are managed. The council has been making some changes, allowing areas of longer meadow grass to grow in some places. In Stowmarket, the council and community worked together to add wildflowers and plant a community orchard, providing blossom in the Spring, fruit in the Autumn and a wildlife habitat. The long grass is then cut and removed in late summer, allowing time for seeds to fall and help spread the wildflowers.

### INVITING NATURE IN ...

The council's biodiversity officer, Richard, says: "This change is one of the fastest ways to benefit wildlife. All you need to do is stand in the middle of a meadow area for a few minutes, from late June onwards, and you will often see it teeming with butterflies, hoverflies and a whole range of other insects.

"Some are obvious, flying above the long grass and flowers, whilst others you may need to delve into the grass to see. Then, go and stand in the nearest area of mown grass to see the difference - there is very little insect life. The change takes only a couple of months.

"It's not just about the wildlife. Spending time closer to nature is good for our wellbeing, too. And young children seem to love exploring paths through long grass, as these offer new ways to play, and more to see.

**01728 628233**

*AH*  
**Athelington Hall**



### **Cheeky Porker Hog Roast**

Our Hog roasts can be tailored to any occasion feeding between 60-250 people. Slow cooked here for 10+ hours, just wait until you try our crackling!



### **Log Cabin Holidays**

Are you looking to get away but don't want to travel too far? Come and enjoy a well earned break in a luxury lodge with your own private hot tub nestled away in the tranquil countryside at Athelington Hall.

**Athelington Hall Horham Eye Suffolk IP21 5EJ**  
[info@logcabinholidays.co.uk](mailto:info@logcabinholidays.co.uk)



### FINDING THE RIGHT BALANCE ...

We want to get the balance right, and it's not always easy. We know it's important to keep the grass short all year-round where it needs to be. But there are still spaces where we can make our district more nature-friendly:

- The council can provide advice, along with tree, hedge or wildflower packs for parishes, community groups or landowners. If that's of interest we'd love to hear from you! For details see [www.midsuffolk.gov.uk/wildlife-and-biodiversity](http://www.midsuffolk.gov.uk/wildlife-and-biodiversity).

- We are also continuing the popular Trees for Life scheme, which offers families a free tree to mark the arrival of every new child. For details see [www.midsuffolk.gov.uk/w/tree-for-life](http://www.midsuffolk.gov.uk/w/tree-for-life).

**See you soon.**

**For district council issues, please contact me and I will try my best to help.**

### ■ HORHAM BAPTIST CHURCH:

Horham Baptist Church meets every Sunday at 10.30am. In a regular morning gathering, we sing, pray, read the Bible together, and listen to a short talk. There are also separate groups for kids, led by DBS-checked team members, and tea and coffee afterwards. We also gather in the evenings, usually on the 1st and 3rd Sunday of the month at 7pm, in a more informal atmosphere. Here, we pray, discuss, and sometimes share communion. On June 30th at 6pm, we're so excited to be welcoming Rico Tice from Christianity Explored Ministries as he delivers a seminar and gives an update on CE's work. Everyone is always so welcome to join us, no matter what you believe.

**Courtney Chilvers, Ministry Trainee**



**Safe & Sound  
Hygiene and Pest Control**

**Is your garden overrun with moles?**

**Do you have a wasp nest?**

**Are your paddocks overrun with rabbits?**

**For ALL your domestic or commercial Pest Control**

**Woodworm treatment available.**

**No obligation – free survey/quotes.**



*Pest infestation can damage your health and your home. Recent surveys show that numbers of mice/rats and bed bugs found in UK homes are on the rise. As Local Authorities are cutting back on free pest control services. We are here to offer you a service at the right price.*

**Call us to discuss your pests on 07809226109.**

**[www.safeandsoundhygieneandpestcontrol.co.uk](http://www.safeandsoundhygieneandpestcontrol.co.uk)**

### A GREEN THOUGHT

The summer is here and the church enters into the Sundays after Trinity, also known as 'Ordinary Time'. Our hangings change to green, the colour of nature, growth and calm. We all spend more time outdoors and feel closer to God's good creation. It's a great time to consider whether we could do more to help the environment.

Our well-loved animal service when we pray for all the other living beings in our world – and bring some of them to join in!



**Rev Canon Eleanor Goodison,**  
**Priest in Charge, Hoxne**  
**Benefice** 07876 143579  
eleanor.goodison@gmail.com.

– will this year be held on Sunday 11th August at 4pm on the Community Centre field in Horham. Dogs, horses, tortoises and other animal companions suitably protected from each other are all welcome. And don't forget Hoxne's Lammas service in aid of farming charity the Addington Fund on Thursday 1st

■ **ENQUIRIES:** Daphne Harvey, St Mary, **Horham** (384216) or David Spall (384239); Colin Palmer, St Peter, **Athelington** (01728 628747); Hazel Abbott, St Andrew, **Redlingfield** (678217).

■ **NOTICES: Funeral and burial:** Colin Grosvenor aged 80. Saturday 27th April. Horham. **Funeral:** Brian Richard Holley aged 84. Tuesday 14th May. Horham. **Funeral and burial:** Martin Parker aged 64. Friday 31st May. Redlingfield.



## The Daily Care Agency

High Banks, Athelington Road, Horham, Eye IP21 5EH  
(Open Monday to Friday 09.00-17.00 – closed Bank Holidays)  
Tel: **01379 388438** Mobile: **07977 075301**  
E-mail: office@thedailycareagency.co.uk

**ARE YOU LOOKING FOR SOME EXTRA CARE AND SUPPORT TO  
HELP YOU REMAIN INDEPENDENT WITHIN YOUR OWN HOME  
AND COMMUNITY?**

THE DAILY CARE AGENCY IS A SMALL PRIVATELY OWNED  
DOMICILIARY AGENCY THAT TAKES PRIDE IN HAVING THE TIME  
TO CARE AND OFFER INDIVIDUAL SUPPORT TO OUR CLIENTS

**FOR FURTHER INFORMATION PLEASE CONTACT 01379 388438**

**ARE YOU A CARER? – WE REGULARLY RECRUIT FOR LOCAL  
CARERS TO JOIN OUR TEAM**

The Daily Care Agency is registered and therefore licensed to provide services by the  
Care Quality Commission. Provider ID 1-101723169

August at 6pm, followed by a hog roast and a glass of wine. The Lammas service is an ancient celebration of the first loaf from the first grain and another opportunity to think about and pray for our relationship with the environment which gives us our food.

Because we don't have many church festivals over the summer, we have a chance to mark saints' days. Athelington church will be celebrating their patron saint St Peter at a service for the whole benefice on Sunday 30th June at 11am. Everyone is invited to come and join in the festivities! And of course this is the time of year when we have lots of summer events. Look out especially for Redlingfield's popular Fun Dog Show & Village Fete on Sunday 7th July!

Not 'Ordinary Time' after all!

■ **RURAL YOUTH CAFE:** The Rural Youth Cafe @ Hoxne Pavilion launched by the Hoxne Benefice aims to cater for youngsters aged 12-16. They already run a carers and toddlers group, Little Lambs; a monthly Messy Church (which is coming up to its 10th anniversary); and Club Create in the school holidays for 7-12 year olds. Now the rural youth club, started in January, is meeting monthly for two hours on a Friday evening where food, table football, pool, board games and creative activities are organised. The Cafe is run by a part-time Youth Leader, Clive Mobbs, with volunteers.

■ **CHURCHYARD TIDY:** The first week of July will see a big tidy-up of Horham's wildlife-friendly churchyard. Any help with the Suffolk Wildlife Trust award-winning grounds would be very welcome.



**Wilby  
CEVC  
Primary  
School**

**OUTSTANDING:**

- Behaviour and Attitudes
- Personal Development
- Leadership and Management



For more information call 01379 384708 or  
email [admin@wilby.suffolk.sch.uk](mailto:admin@wilby.suffolk.sch.uk) or  
visit [www.wilbyprimary.org.uk](http://www.wilbyprimary.org.uk)

Wilby CEVC Primary School, Brundish Road, Wilby, Suffolk, IP21 5LR

**'Welcoming and happy  
community'**

**'Exciting and enriching  
experiences for all'**

**'All pupils learn well'**

**Leaders have**

**'Relentless  
ambition' and**

**'High expectations'**

**'Exemplary behaviour'**

## CHURCH SERVICES

### ■ Planned Church of England services March to May.

**Saturdays & Sundays:** CW Morning Prayer at 8am on [facebook.com/WingfieldChurch](https://facebook.com/WingfieldChurch);

**Fridays:** Compline at 6pm on Zoom.

#### **Sunday 2nd June**

##### **First Sunday after Trinity**

9.30am BCP Holy Communion, Hoxne;

11am CW Holy Communion, Wingfield;

4pm Messy Church, Syleham and Wingfield Village Hall.

#### **Sunday 9th June**

##### **Second Sunday after Trinity**

9.30am CW Holy Communion, Redlingfield; 9.30am for 10am Café Church, Hoxne.

#### **Sunday 16th June**

##### **Third Sunday after Trinity**

9.30am CW Holy Communion, Hoxne;

10am Village Service, Syleham;

11am CW Holy Communion, Denham;

6pm BCP Evensong, Wingfield.

#### **Sunday 23rd June**

##### **Fourth Sunday after Trinity**

9.30am BCP Holy Communion, Syleham;

11am CW Holy Communion, Hoxne.

#### **Sunday 30th June**

##### **Fifth Sunday after Trinity**

11am Benefice service and Patronal Festival, Athelington; 4pm All Age service, Hoxne.

#### **Sunday 7th July**

##### **Sixth Sunday after Trinity**

9.30am BCP Holy Communion, Hoxne;

11am CW Holy Communion, Wingfield;

4pm Messy Church, Syleham and Wingfield Village Hall.



## David Dunnett Family Butcher

17 Church Street, Eye - Tel: 01379 870155

Web:- [dunnettbutcher.co.uk](http://dunnettbutcher.co.uk)

**Beef, Pork, Lamb & Poultry from local Farms**

◆ *Home Made Sausages our Speciality* ◆

*For the B.B.Q all home made*

**Lamb Grillsticks Marinated in a Variety of Flavours**

**Beef, Pork, Chicken & Lamb Kebabs**

**Marinated Belly Pork & Pork Ribs**

**Beef, Pork, Lamb, Chicken & Venison Burgers**



**Sunday 14th July**

**Seventh Sunday after Trinity**

9.30am CW Holy Communion, Redlingfield; 9.30am for 10am Café Church, Hoxne.

**Sunday 21st July**

**Eighth Sunday after Trinity**

9.30am CW Holy Communion, Hoxne; 10am Village Service, Syleham; 11am CW Holy Communion, Denham; 6pm BCP Evensong, Wingfield.

**Sunday 28th July**

**Ninth Sunday after Trinity**

9.30 am BCP Holy Communion, Syleham; 11am CW Holy Communion, Hoxne; 4pm All Age service, Hoxne

**Sunday 4th August**

**Tenth Sunday after Trinity**

9.30am BCP Holy Communion, Hoxne; 11am CW Holy Communion, Wingfield;

4pm Messy Church, Syleham and Wingfield Village Hall.

**Sunday 11th August**

**Eleventh Sunday after Trinity**

9.30am CW Holy Communion, Redlingfield; 9.30am for 10am Café Church, Hoxne; 4pm Animal Service, Horham.

**Sunday 18th August**

**Twelfth Sunday after Trinity**

9.30am CW Holy Communion, Hoxne; 10am Village Service, Syleham; 11am CW Holy Communion, Denham; 11.15am BCP Holy Communion, Horham; 6pm BCP Evensong, Wingfield.

**Sunday 25th August**

**Thirteenth Sunday after Trinity**

9.30am BCP Holy Communion, Syleham; 11am CW Holy Communion, Hoxne; 4pm All Age service, Hoxne.

**EYE — SALON**  
**HAIR + BEAUTY**

**We've moved!**

We are now at The Hexagon, Broad Street, Eye, Suffolk, IP23 7AF.

Eye Salon is a friendly hair and beauty salon that has been trading for more than seven years.

Our fully trained team uses well-known, trusted brands and we all have a passion for hair and beauty.

With our large range of hair and beauty services we can adjust to suit our clients' individual needs, whatever style or age.

To book an appointment call us on 01379 871 996  
or visit our website to book online!  
[www.eye-salon.co.uk](http://www.eye-salon.co.uk)



# Mobile Hairdresser and Hair Extension Specialist In Horham and surrounding areas

*Available weekdays between 9am and 3pm*

Woman's, men's and children's haircuts and colouring services. 15 years experience and previous salon owner.

## **Cutting:**

Wash, cut & blow-dry - £25

Wash & blow-dry - £15

Children under 12 - £10

**Colour** (all prices include wash, cut & blow dry):

Half head foils - £65

Full head foils - £85

Toner - £10 after colouring service

Men's from £12

## **Hair Extensions**

Natural looking, real hair extensions for clients wanting fuller, thicker or longer hair. High quality, durable hair lasting 12-18 months, fitted with inconspicuous Nano-bonds.

## **Prices:**

Full head hair extensions, including fitting, shaping and styling - From £300 for added length and thickness.

Maintenance from £30

Free consultation and colour match.

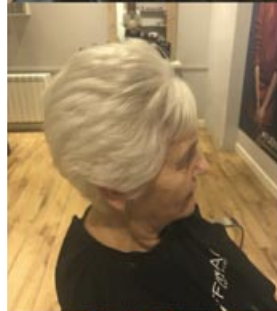
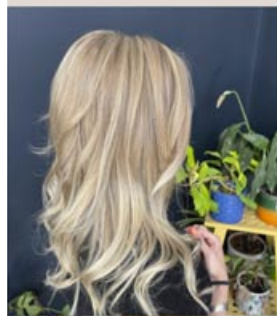
Take a look at my Facebook page:

@HairByChloeJThomas  
for more examples of my work.

**Chloe Thomas**

**07584 062280**

**White House Cottage  
Horham**



# Fleurs Artisan Florist & Greengrocer



## There's always something to celebrate . . .

**Arrangements ● Bouquets**  
**● Hand-tied & aqua pack**  
**gift-boxed bouquets**  
**● Garlands**

For opening times please  
visit our website  
[www.fleursartisan.co.uk](http://www.fleursartisan.co.uk)

Greengrocery orders for  
collection, email us and  
we can forward our  
list by return.

Please order early to  
avoid disappointment.

Fleurs Artisan Florist & Greengrocer,  
6 Church Street, Eye  
[www.fleursartisan.co.uk](http://www.fleursartisan.co.uk), 01379 831083,  
[fleursartisan@btconnect.com](mailto:fleursartisan@btconnect.com)







# Barley Green Garage

**ONE-STOP SHOP FOR ALL YOUR MOTORING NEEDS!**



MOT



Servicing



Repairs



Air-Con



Tyres



Exhausts



Diagnostics



Batteries



Tow Bars

**ALL MAKES AND MODELS WELCOME**

**SAFE IN OUR HANDS**

With over twenty years experience in the motor trade, Barley Green Garage can offer you peace of mind that your vehicle is repaired to the highest standards.

We can offer "While You Wait" appointments, so why not enjoy a coffee and a comfortable chair while we repair your vehicle or perhaps you would prefer to have a lift home and we come pick you up when your vehicle is ready.



Barley Green Garage  
@barleygreengarage

**Tel: 01379 388 947**

Laxfield Road, Stradbroke, IP21 5JT

**[www.barleygreengarage.com](http://www.barleygreengarage.com)**

**email: [barley\\_green\\_garage@btconnect.com](mailto:barley_green_garage@btconnect.com)**

