

Athelington, Horham & Redlingfield NEWS



**AUTUMN 2024
Issue No. 66**

SPURLING & REMBLANCE



**MOTOR ENGINEERS
MOT TEST CENTRE**



**Service and repairs to all cars,
light commercial and 4x4s**

Specialists in vehicle diagnostics

Free local collection and delivery

Courtesy car available

Prompt attention assured

Competitive rates

(01379) 384689

Open 8.00am-5.30pm Mon-Fri, 8am-noon Saturdays

Barley Hall, Laxfield Road, Stradbroke, IP21 5NQ

on the B1117 - 1¾ mile outside Stradbroke, towards Laxfield

■ **HORHAM POST OFFICE & SHOP:** Recognising David and Irene want to retire soon, the future of Horham Shop and Post office was discussed by over 50 locals at a public meeting at Horham Community Centre. Everyone greatly appreciated David and Irene's more than fifty years of community service. Ideas discussed included the community taking over the existing shop but people questioned if that was viable given there are two existing community assets in the village. Other ideas included creating a community shop, possibly at the community centre, maybe alongside a community food growing project, creating a "good neighbour" food collection/delivery service for residents that could not drive or get to shops easily as well as having a weekly mobile post office call at the village. People also felt that more needed to be done with the existing community centre to make it more useful and get people more involved. There were so many ideas that a small group has been set up to look at the options and report back to the community and Parish council.

Janet Norman-Philips

Congrats to Jan and Neville Butcher who recently celebrated their 62nd wedding anniversary.

A big thank you to all our deliverers, contributors and advertisers and in particular Jan for tech support & Midge Gibbons for proofreading.

Any errors are mine. **Mike Ager**

Front page picture: Edward Colnet photographed by mum Sara with a young barn owl. See pages Colnet Conservation pages 6, 7 & 8.

If you would like to advertise or contribute to the magazine or have an event or organisation you would like featured contact editor:

Mike Ager on mike@gn.apc.org or 01379 678835 at Hidcote Lodge, Mill Road, Redlingfield, IP23 7QU.



Deadlines for adverts & editorial:

Spring issue (Mar, April & May)

Final deadline February 14

Summer issue (June, July & Aug)

Final deadline May 14

Autumn issue (Sept, Oct & Nov)

Final deadline August 14

Winter issue (Dec, Jan & Feb)

Final deadline November 14



Printed by Seale Print, The Quadrangle Centre, The Drift, Nacton Road, Ipswich, IP3 9QR. 01473 276010, www.pjprint.com.

Athelington, Horham & Redlingfield News was founded in 2008 by Evelyn Adey and Mike Ager.

A happy end to a year of rainy weather ...

The weather had to improve one day and eventually, for the benefit of both the farmers' harvest and the children's school holidays, it did so as the school year ended. As the late Queen might have said, a happy end to an annus horribilis of 12 months of very rainy weather.

But what a disappointing spring. With the late arrival of migrants and a quiet April for wildlife watchers generally, I had grabbed the opportunity of a visit to Dungeness Nature Reserve with my son Duncan, who had a work-visit to the adjacent Dungeness power station. Both are situated on a shingle promontory

jutting into the English Channel where a digger and lorry are permanently employed to return shifted stone from the east side, back to the west side, to protect the power station from the constant erosion. Though now decommissioned, was it a good place to build a nuclear power station? It's a beautiful place if you like bleakness, and so bleak it looks like a vast shingle desert where a few resolute coastal plants and flowers eke out a living. Here the wind do blow most of the time and on my day it was blowing hard enough to unbutton your shirt. The reserve comprises a number of extracted gravel pits now flooded and my early walk yielded a modest birding list of cormorant, Great



**Rob and Kath's
spotted flycatcher
in pear tree.
A young spottie is
waited on Beak
and Wing.**



WASH FARM - WILDLIFE

Trevor Edwards' latest Wash Farm Wildlife

Crested Grebe and Little Egret.
But the best was to come.

Heading back to the reserve's RSPB centre, I caught a prominent splash of wine-red coloured plumage and it was my first ever sighting of a Dartford Warbler perched on brambles in plain sight.

Unusually for a warbler it is non-migratory and survives here at Dunwich Heath where thick green heather and gorse provide insects throughout winter even under snow cover. It was the highlight of this Take-your-Dad-to-work day though the fresh crab roll from a fishermans' stall came a close second.

It is a poor year for swallows and martins. Dick Eaton who had repeat broods last year says he hasn't seen a pair this year at all, though Redlingfield keeps coming up trumps



**Dartford Warbler
(library photo) can be
found at Minsmere.**

with some of the later migrants. Rob and Kath in the village captured a superb photo of a spotted flycatcher in their garden pear tree this year and I was able to catch a lazy juvenile spottie waiting impatiently to be fed. This was particularly encouraging after two years of absence when they nested unwisely on the end of the house where predation was highly likely, but this year they have hidden away nesting safely until the youngsters fledge and appear on the climbing frame. The turtle doves have been successful again, which we will soon take for granted whilst other regions struggle to get them on board. However, the RSPB's campaign called Operation Turtle Dove is working hard and the word on the grapevine is a bit more optimistic on sightings.

*Continued on
page 4.*



WILDLIFE - WASH FARM

Continued from page 3.

Mike at Hidcote Lodge was sad to lose one of his regular pair which flew into a big window and this may have caused the loss of a brood. Unusually,

his turtle doves came to his bird feeder as they are often shy, well-hidden in thick cover and difficult to observe, although once in close-up, the beady eye is a very distinctive feature.



The turtle dove's bright distinctive eye is caught on camera.



HANDYMAN
INDOOR & OUTDOOR JOBS
PLUS PROFESSIONAL
WINDOW CLEANING
& PRESSURE WASHING

0787 6512815 or 0784 7874999
mpcook123@outlook.com
www.cookspressurewashing.co.uk

**Domestic,
Agricultural,
& Commercial
Pressure Washing
& Window Cleaning**

WILDLIFE - WASH FARM

A summer hedging job at Wash Farm involved a cutting back of the poplar trees in the drive. Planted when we came here 50 years ago, they had developed branches low enough to catch the big 40-tonners that now are the standard lorry size for the grain trade and had become bushy with ivy growth. With Steve in the man-platform we worked one by one down the drive until a bird bolting from its nest stopped us short. Steve's camera came out as did my childhood Observers' Book of Birds Eggs and we soon identified the four eggs as those of the greenfinch. Partial to thick ivy and preferring to nest out of man's reach, which this certainly was until the telescopic loader arrived, we hoped she would not desert and quickly backed off. We sneaked another look three weeks later and found the nest bulging with fuzzy nestlings. Having seen a handsome adult on the peanut feeder this spring, this confirmed a good year for the greenfinch. All's well that ends well. ■

A little untidy but safe and out of reach, the greenfinch nest. Sometimes known as the bully of the birdfeeder, this fierce look tells a story.



Optimal Heating

Father & Son Team

With over 30 years experience

Specialist Heating Engineers

Oil, Natural Gas & LPG Servicing and Repairs



Tel: 01728 628687
Mobile: 07806 660399



More nesting success

Hello Everyone! We've had a lot of success with our breeding birds this year! As you may remember in our last newsletter, our two young Tawny Owls had already fledged and we have really enjoyed watching them grow from scruffy grey balls of fluff to elegant, chestnut-brown adults.

A short while after the last newsletter, we had our Barn Owl box checked. We are very pleased to report back that we had one Barn Owl chick, which was ringed for BTO Nest Record Scheme. It was lovely to get up close again to such an amazing creature. This one wasn't as advanced as the one last year, so it was a lot more fluffy! You could still see the beautiful adult plumage coming through though and Arthur and Edward had the chance to hold it before Chris put it back in the nest box.

The next day, Chris returned to ring our young Kestrels. They were quite

advanced and extremely noisy and feisty! From our five eggs, we had two successful fledgelings which spent a long time flying around our meadows and practising food passes and swooping to each other before moving on.

Whilst the Kestrels were being ringed, Chris set up some nets near where both Boiler Robin and the Spotted Flycatchers were nesting, and put out some live mealworms. Within just a few minutes, he had managed to capture Boiler Robin and both adult Spotted Flycatchers! They were all then carefully weighed, measured and ringed for BTO before being released. It was an amazing experience and especially important that the Flycatchers have now been officially recorded and reported back. It will also be very exciting for us if they return next year to breed, and we can see that they are ringed!

Over on the meadow we had been



This page: Arthur and Edward on the Meadow. Facing page, from top: A Spotted Flycatcher chick; Henry, Chris and Spotted Flycatcher; and a Kestrel.

stories ...

noticing a lot of Buzzard activity. On one of our walks, we looked up into our Oak tree to see a grey fluffy head looking down at us from a huge nest! Over the next few weeks, the Buzzard chick became noisier and noisier and we've loved watching it following its parents around, shouting for food!

Just over the last few days, our Sparrowhawks have also fledged and have been flying around our meadows, landing quite close to us for a good view before setting off again, gliding and swooping after each other and then climbing high into the sky. We have really enjoyed having so many successful birds of prey breeding on our land and watching their progress after fledging.

We've continued to put out our Turtle Dove Supplementary food and have been taking note of the various birds that have been visiting to feed. One particular bird that we were very excited to see on the driveway eating it was a Nuthatch. We very rarely see a Nuthatch on our land and so quickly set up a nut feeder and a seed feeder outside our kitchen window. Within a few days, the Nuthatch had found them!

It's been a frequent visitor since, so we are really hoping that if we keep feeding, it may stay and perhaps even breed next year.

During the summer holidays, we've made a few evening trips to Southwold Beach and Pier. We've especially enjoyed watching the different gulls and their individual antics! There are lots of different gulls to spot – Herring Gulls, Black-headed Gulls, Lesser Black-backed and Great Black-backed Gulls. The Herring Gulls seem particularly bold and we've watched them swooping down low over the people trying to eat their fish and chips, in the hope that they might snatch a chip or maybe even a sausage whilst they're not looking!

Continued on page 8



Continued from page 7

People often associate gulls with the coast, often knowing them collectively as ‘Sea Gulls’ however, on a recent trip to the Be Well Barn in Redlingfield, we were amazed at the number of gulls we could also spot in one of the recently ploughed fields. They were mainly Herring Gulls and a few Lesser Black-backed Gulls, and they were making the most of the worms and various invertebrates that had been brought to the surface by the plough. Although gulls are historically known for being found at the coast, feeding on fish waste that fishermen discarded back into the sea, they can actually be found wherever there is food. Freshly ploughed fields are a great source of

food, which is why gulls can often be seen flocking behind the plough as it works.

We thought it might be a nice idea to start doing a little fact file about a particular bird for each newsletter, so

this time we decided to feature the Nuthatch, as once we started watching ours from the kitchen window, we wanted to learn more about their preferred habitat, food etc. and thought that you might find it interesting too.

We really hope that you have enjoyed our updates and artwork, and look forward to reporting back on our Autumn

successes in the next newsletter.

*From Henry, Arthur & Edward,
Colnet Conservation*



**Arthur with a
barn owl.**

■ NUTHATCH FACT FILE – BY HENRY

Description: Smaller than a blackbird, slightly larger than a robin, the nuthatch has a peach-orange breast, blue-grey wings, a long, powerful beak and a black streak running along its eye.

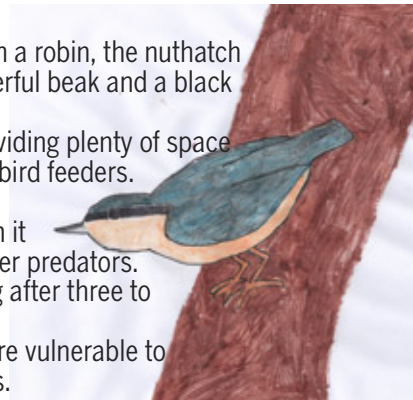
Habitat: Broadleaved woodland with large, old trees, providing plenty of space for nesting and foraging – sometimes visits gardens and bird feeders.

Diet: Insects and invertebrates, seeds and nuts.

Nests: In tree cavities; often old woodpecker holes, which it lines with mud to make it the correct size and to help deter predators.

Clutch Size: 6-8 eggs, hatching after two weeks. Fledging after three to four weeks.

Predators: Sparrowhawks take adults, eggs and chicks are vulnerable to a range of predators including squirrels and woodpeckers.



STUMP GRINDING

Call Tony on 07949608243 for a quote



**Also Mini Diggers, Dumpers, Rollers
etc for hire. Based in Denham.**

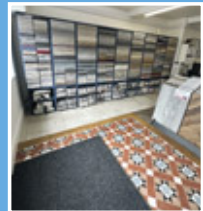
**0%
Finance
Available**

**Making
Luxury
Affordable**

**Wood Flooring
Amtico
Karndean
Carpets
Sisal
Runners**

**Contact us today to
transform your space**

**eye
Flooring**



**Visit our new showroom -
19 Church Street, Eye, IP23 7BD**

T: 01379 870190

E: info@eyeflooring.co.uk

W: www.eyeflooring.co.uk





Ian's Private Hire

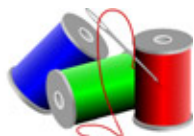
For all your taxi needs

Local/Long journeys
Days/Nights out
Airports/Cruise terminals

www.iansprivatehire.com
iansprivatehire@gmail.com
Phone: 07825 001270

Simply Beautiful By Anne

*Weddings, Bridesmaids,
Ball Gowns, Curtains,
Cushions, Alterations
and much more
Free Estimates Given*



*Magnolia House,
Wilby Rd, Stradbroke
Tel: 01379 384097
Mob: 07944 894757*

WILDLIFE - NEW READING WOODS GROUP

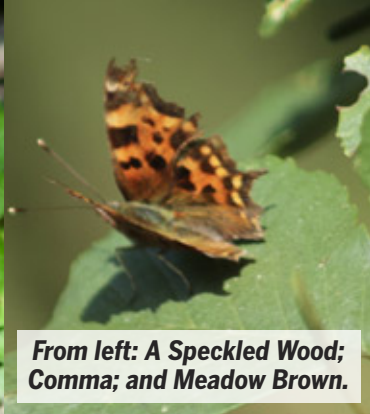
Grass is sparse in the woods

On a hot August day as harvest progressed the meadow was cut at the woods. Following the hot dry weeks of July the grass was sparse and too short to bale this year. Some of the trees are looking dry and the pond level is down and rain would be welcome.

The heat may have made the butterflies drowsy as Meadow Brown, Speckled Wood and a Comma all settled to allow a photograph. Dragonflies were still hawking over the meadow. No swallows were to be seen and no Painted Lady butterflies. Both migrate back to warmer climes in the autumn.

Although it was hot on the meadow the trees provided cool shade. The crab apples look to have a bumper crop this year and the sloes were also plentiful. At the edge of the wood overlooking





**From left: A Speckled Wood;
Comma; and Meadow Brown.**

the meadow a new seat is in place. This was made possible by the effort of Micheal Reeves' family and friends. The seat is in remembrance of Michael, David Flowerdew and Geoff Hoad, all founder members of the group whose hard work and commitment made the wood happen.

Autumn approaches fast with nights drawing in seeds are setting and the blackberries hung with fruit and

flowers. In the cooler weather we will do some maintenance work that the heat has prevented and look forward to the autumn colours.

● If you are interested in joining the New Reeding Woods Group and getting hands on experience of improving our local environment and enjoying outdoor activities, please contact our secretary Peny Conway on 07495 875299.

**P.Y.O
PUMPKINS**

YOUR LOCAL PATCH - FUN FOR ALL

OVER 20 VARIETIES • ACTIVITY BARN • FOOD + DRINK
VENDORS • SPOOKY TRAIL • DOGS WELCOME
VISIT SOCIAL MEDIA FOR MORE DETAILS




10.00am - 4.30pm
Weekends: 12th + 13th, 19th + 20th
plus 25th - 31st October



PUMPKIN BARN

Redlingfield: IP23 7NZ
www.PumpkinBarn.co.uk

Enjoying the late sun

We have been enjoying the late arrival of warm sunny days at The Old School. Our customers have been enjoying the summer sun while wiling away an hour or two in the garden during our Wednesday coffee mornings and on Sunday afternoons when our bar is open. Let's hope we have a warm autumn too!

On September 7th we are hoping to have a stall at the community centre. A variety of crafts have been promised for the stall, more contributions are welcome. Please contact someone at The Old School.

On October 13th we are going to host a bring-and-share Harvest lunch following the Harvest Festival

service in the church. (This date may change if work in progress at the Church delays the service. Please keep an eye on our Facebook page or



Dan To Earth Electrical

dantoearthelectrical.co.uk

Danny Lamb
Electrician

07756 204 354

Horham Suffolk

danlamb@live.co.uk

01379 384 889



the notice board at the shop). Do come and join us, it is always a very happy occasion. The bar will be open, offering Pimms, Champagne and of course beer, wine and spirits and a variety of soft drinks.

The coffee morning is well attended and is a lovely opportunity to catch up with each other as well as enjoying coffee, tea and cake. The bar is open on Sundays from 12 noon and the coffee morning takes place on Wednesday from 10.30 am to 12 noon.

The Old School is available to hire, please ring Pip on 07305108698

*Horham and Athelington Village
Hall Committee*

HORHAM OLD SCHOOL & NEWS

■ **BIKE RIDE:** Saturday 14th September sees the annual Suffolk Historic Churches Trust sponsored Ride, Stride, Pedal and Drive. Visit shct.org.uk for details or contact your local representative. Half of the sponsorship money raised goes to your local church and half to the SHCT, which makes grants towards church building projects. Philip Leeder will be riding for Redlingfield on his 60th birthday so I'm sure we can do something to make it special for him. Suffolk raised £252,133 last year.

Local representatives are:

Athelington: Colin Palmer 01728 628747, colin.palmer@bt.com

Horham: Daphne Harvey 01379 384216

Redlingfield: Revd Eleanor Goodison eleanor.goodison@gmail.com, 07876 143579

Mike Ager



Wilby Pre-School 'Where learning starts'

*Places available for 3 and 4 year olds for up to
30 hours a week*

- Flexible 3 hour sessions
- Forest School learning
- Wrap around care available
- Exciting hands-on learning



FROM SEPTEMBER 2023
Contact us to arrange a visit today
01379 384708 www.wilbyprimary.org.uk

Makers Market & Craft Fair

At the AGMs of Horham Village Hall Trust and Horham and Athelington Community Council on the 9th July, Hav proposed we re-elected *en bloc*, Tim seconded. Everyone present was happy to continue and keep the *status quo*.

Elected by acclamation, as follows:

Tim Debenham (Chairman); Paul Hambling (Parish Council); Neil and Maryann Cartwright; Hav Wilkins; Steven Havers (Baptists); Karen Alderton (Bookings); David Whatling (PCC); Rod Tyrrell; Jamie Wilson; Kay Page; and Margaret Streeter (Secretary/Treasurer). Angela Wilkins

continues on the H&ACC as Secretary/Treasurer and Margaret Streeter as Chairperson.

Karen further proposed that Kerina Jane, be co-opted as she had expressed a wish to rejoin as a Trustee on the HVHT and H&ACC in order to help with the Friday evening “Early Doors”, to involve young families. Tim seconded. Agreed.

The yard sale trail went well and we are holding a Makers Market and Craft Fair on Saturday, 7th September, 10am-3pm. It is £5 per table. Please book if possible before August 31st (contact Karen Alderton, 07775672220). There will be refreshments. Look forward to



Susan Whymark
Funeral Service Ltd
Independent and Family Run

Serving Eye, Harleston, Diss, Framlingham and the surrounding areas since 2004

We offer a range of services to suit your individual needs

- Funerals tailored to your needs and budget
- Full estimates given at time of arrangement
- Pre-Paid Funeral Plans available
- Direct Cremations
- Support Groups
- Memorials

We provide an efficient but friendly service through our professionally qualified staff **24 hours a day**

• Chestnut House, 12 Progress Way, Eye, Suffolk, IP23 7HU Tel: 01379 871168	• Denmark House, 1 & 2a Carmel Works, Park Road, Diss, Norfolk, IP22 4AS Tel: 01379 831332
• Ley House, 11a London Road, Harleston, Norfolk, IP20 9BH Tel: 01379 851253	• Moore House, 8 Fore Street Framlingham, Suffolk, IP13 9DY Tel: 01728 723448 (Formerly Moore Bros)



See our customer reviews at
www.susanwhymark.co.uk
Email: susan@susanwhymark.co.uk



kick off packed autumn

seeing you there. Other upcoming events include Open Mic on Saturday, 14th September; Caravans 19/23 September; Harvest Supper, Saturday October 5th. Pilates on Friday mornings is going well, and we may start a “well-being” exercise and chat group.

We have been talking about planting trees and creating a memorial woodland on the old bonfire site. The Woodland Trust have a scheme to make sure everybody in the UK has the chance to plant a tree. They are giving away hundreds of thousands of trees to schools and communities. We plan to plant a Coronation oak.

The Parish Council are pressing on with obtaining grants for new playground equipment. For it to go ahead they really need the support from the community.

Thank you to all the bar persons, members/patrons, volunteers who keep the grass cut, the hedges trimmed and the bottle bank filled!

Members that we love but see no more: Mrs Iris Plant, Michael Boxhall, Steve Scorer, and William Debenham. May they rest in peace.

Our next meeting is on Tuesday, 10th September, 7.30 pm.

Margaret Streeter (Secretary) on behalf of the HVHT & H&ACC

UNDER ONE ROOF **HARD LANDSCAPING SERVICES**

Specialist in all types of paving and hard landscaping

**Driveways, patios, ornamental garden walls,
drainage solutions and fencing**

**Family run business with more than 30 years of
on-the-job experience**

Fast friendly professional

Fully insured and all work guaranteed

**Call Mark for a friendly visit with a free quotation
01379 677027 or mobile 07768636618
www.underoneroof.me**

■ HORHAM & ATHELINGTON

WHATSAPP GROUP: If you are a resident of Horham or Athelington and what to join the villages' WhatsApp Group just scan this QR code. The group is for help,

information and emergencies such as suspicious activities or vehicles, escaped animals, assistance for anyone incapacitated, village and parish council meetings etc. It is not for businesses, or advertising of businesses.

Hawk Honey



Lots of autumn

Gardening has been relentless whether you have been lawn edging, lawn cutting, weeding, shrub shaping or hedge trimming.

Before the leaves have fallen from surrounding trees, it's a good time to renovate your formal lawn. This could be just a simple lawn treatment of feed, weed & moss-killer or more extensive, by



YOUR RELIABLE LOCAL PLUMBER



Anglian Water Approved

Mark Jardine
Plumbing & Heating



- All Household Plumbing, Large or Small
- Full Bathroom Installation
- Domestic Heating, Radiators, Pumps etc.
- Water Softeners
- All Work Anglian Water Certified
- Free Estimates & Fully Insured
- 24 Hour Emergency Call Out

Tel: 01728 628291 Mob: 07854 924 801
Email: mgjardine@btinternet.com

interest left

scarifying, aerating, grass seeding and then lawn dressing. Anyway, whatever you choose to do, this will give your lawn a timely boost.

There are still plenty of plants flowering for autumn interest in the garden. Here are just a few from the many to choose from: chrysanthemum; dahlias; roses; sedum; asters; Japanese anemones; rudbeckias; fuchsias; and red-hot pokers.

Indian Summers can create dry spells even in autumn, so it is still important to keep the watering regime up. You may even still have bedding plants displaying their glory, if they have been boosted by regular liquid or incorporated slow-release feed.

It is time to pick your apples, pears and figs as well and hopefully there will not be too much maggoty worm damage. If you've got too many to eat, then try to store undamaged, unbruised fruit, individually in trays wrapped in grease proof paper or the cheaper alternative, newspaper. Keep them in a cool, dark place and check on them regularly.

Keep dead heading your roses and they should flower well into the autumn. Always remove any damaged or diseased leaves and avoid putting into your compost bays or piles to stop the spread of fungal disease.

That's it folks! Happy gardening.
Andy Peters.

PS. Happy birthday to my better half Michelle who celebrates her 50th on September 2nd.

Facing page: asters. This page, from top: chrysanthemum; Japanese anemones; and fuchsias. Photos: Wikimedia Commons.





Pictured from left: re-enactors at Brad's Bar; dancing to Skyliner; the cast of the Friendly Invasion with Alan Johnson.



THE RED FEATHER CLUB: The 95th Bomb Group welcomed more than 160 American visitors, along with a Canadian and a Brit or two, during the first weekend in June. They were from cruise ship *Seabourn Ovation*, which was moored in nearby Great Yarmouth as part of the 80th Anniversary of D-Day cruise organised by The National WWII Museum in New Orleans. Among those entertained by the Red Feather Club's resident little big band Skyliner were two WWII veterans, 95th Bomb Group families and

veterans of both Korea and Vietnam. There's been a lot going on at the Red Feather Club in recent months with perhaps our best-ever Americana Day and a superb performance by Memphis Lee and The Creepers to a full-house. Our free open days have gone from strength to strength with more and more people enjoying music and more on the last Sunday of the month. We have also hosted a great play - the Harleston Players had a sell-out for their performance of "Friendly Invasion" with

Paul Durrant & Son Ltd Carpentry Services

MANY ASPECTS OF CARPENTRY

- Kitchen fitting
- Fitted wardrobes
- Storage solutions
- Window & door replacements
- Timber-framed sheds & home offices

Office: **01379 678485**

Email: pauldurrantandsonbuilders@gmail.com
or [johndurrant75@gmail.com](mailto: johndurrant75@gmail.com)

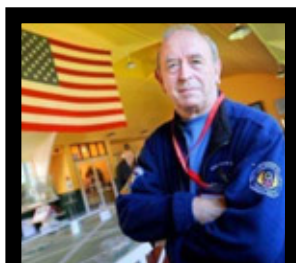
For advice call John: **07894 551485**



RFC dancers among the cast and music from Station 119. We've also had a fund-raising dance for our friends at the 96th. Coming up in September are Laura B with Ian Gillion Jr and band. That Sunday's open day will be followed by 95th BGHA AGM. On Saturday October 26th there's fund-raising dance for Redlingfield with DJs Andy AV8 & The Mailman followed by the final open day of the year. And 2025 looks like it will be another spectacular year with a reunion planned and big names The Biscuit Swing Band and boogie woogie pianist Cody Lee already booked in by our events guru Andy Garner. There have also

been a whole host of visitors to the Red Feather Club over recent months including international re-enactors Angels on our Wings. Three groups of American service personnel also visited over the summer to find out more about the group and in particular the history of the group's badge. They were from disparate units, which it is hoped will be formed into a new 95th. Sadly two stalwart helpers have been lost recently, Wayne Morgan and Ray Howlett, who created the scale model of Horham airfield at the RFC among many dioramas, models and much else. They will be missed.

Mike Ager



Ray Howlett, 1943-2024

● **The Red Feather Club Museum:** Public Open Days 10am-4pm the last Sunday of the Month from 28th April to 27th October. The museum at Coldhams Hill, Denham, IP21 5DG, is run by the 95th Bomb Group Heritage Association (Charity No: 1119769). Visit: www.95thbg-horham.com. Contact: enquiries@95thbg-horham.com.



PAT KELLY, 1937-2024



REDLINGFIELD DOG SHOW & VILLAGE FAYRE: The weather was pretty good for the dog show - the rain arriving just as the judging was ending. All the helpers were fantastic and everyone seemed to have really good time, even though there were fewer people than previous years. A big thank you to Mike Ager, Katie & Drew Abbott, Alison & Amber Brice, Ben Hewitt, Glenn Miller, Lesley Rose, Cath & Rob Scott, Adrian & Tom Smith plus a few other people whose names I don't know! Plus of course, Alison Smith, who had organised everything before having to be elsewhere. A very big thank you to Be Well Barn for sponsoring the dog show rosettes. Thank you to everyone who donated prizes for the raffle, including Be Well Barn for a Spar Pod Voucher and Fleurs Artisan for a lovely orchid. Thank you to judges Mike Putt and Nicki Stafford and the judges' helpers, Kyla, Amber and Phoebe. They all did a great job.

(Following the raffle Nicki Stafford ended up with the Be Well Barn Spar Pod voucher and was very pleased indeed). And also to the whole team from Paws of Parham and of course all the people who came along to have fun and spend their money.

Janet Norman-Philips

FUN DOG SHOW & VILLAGE FAYRE Redlingfield Doorstep Green Sunday 7th July 2024

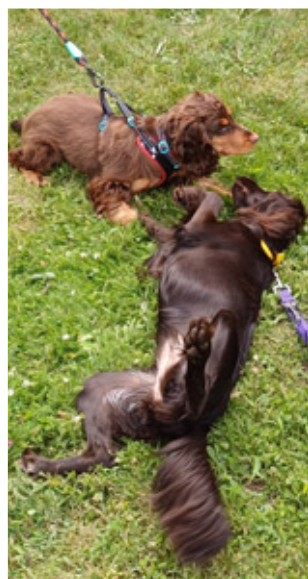
From 9.30am - first class at 10am
Fayre from 1pm with stalls etc

Rosettes for all Dog Show entries, classes:
best rescue, best puppy (under 1 year),
best young handler (under 12 years),
best veteran (over 10 years), scruffiest,
waggiest tail, best female, best male,
dog with the best trick & dog the
judge would like to take home.

Have-a-go and demonstrations ring
Refreshments, BBQ, raffles, games & bar
Dog Show, refreshments & BBQ proceeds to St Andrews
Fayre proceeds to Redlingfield Village Funds
Bar proceeds to Redlingfield Doorstep Green Fund

Contact Alison 07817 207462
Details www.redlingfield.suffolk.gov.uk
Dog Show Sponsors  be well barn
www.bewellbarn.co.uk





DOG SHOW RESULTS:

Best Rescue: Ken Messenger, Oscar.

Best Puppy (under one year):

Hazel Moyes, Taz.

Best Young Handler (under 12

years): Jess Hewitt, Barley.

Best Veteran (over 10 years):

Andrew Warne, Ted.

Scruffiest: Phoebe Smith, Lucy.

Waggiest Tail: Jill Wood, Millie.

Best Female: Beverley Abbott, Molly.

Best Male: James Connely, Jurgen.

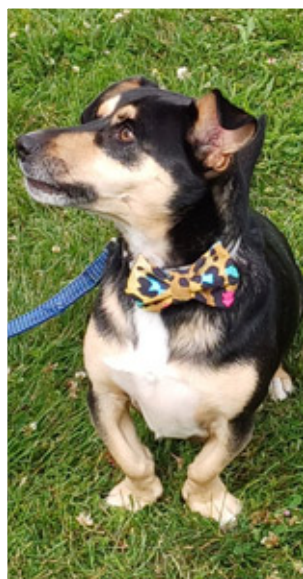
Best Trick: Avril Court, Bob.

Dog the Judge Would Take Home:

Phoebe Smith, Finn.

Best in Show: James Connely, Jurgen.

Reserve Best In Show: Hazel Moyes, Taz.



**Dog Show pictures by
Janet Norman-Philips**



WHAT'S ON

Wednesday 4 September

Redlingfield Coffee Caravan: 10am-noon.

Saturday 7 September

Makers Market & Craft Fair: Horham CC, 10am-3pm. £5 per table (contact Karen Alderton 07775672220).

Redlingfield Pub on the Green: Doorstep Green, 6pm-midnight.

Sunday 8 September

Suffolk Dog Day: Helmingham Hall, 10am-5pm. Tickets: £15 adult; £7.50 child; £49 family (2 adults, 3 children) until Wednesday 4 September. Tickets on day: £17.50 adult; £10 child; £60 family ticket. Proceeds from Suffolk Dog Day will go towards St Elizabeth Hospice's care in Ipswich, East Suffolk & Great Yarmouth and Waveney.

Saturday 14 September

Annual Suffolk Historic Churches Trust sponsored Ride, Stride, Pedal and Drive.
Open Mic Night: Horham CC.

Sunday 15 September

Suffolk Wildlife Trust - make a hedgehog home: The Bank Eye, 10am-2pm. Booking essential. £12 per hedgehog home.

Autumn Plant Fair with Artisan Market: Helmingham Hall.

Tuesday 17 September

Horham & Athelington Parish Council: Horham CC, 7.30pm.

Friday 20 September

Catfish - Blues & Rock Band: 7.30pm, Debenham Leisure Centre.

Saturday 21 September

Stowmarket Traditional Music Day: see story & East Anglian Traditional Music Trust website www.eatmt.org.uk.

Framlingham Horticultural Society Autumn Show: The Railway Inn, Station Road, open to public 10am-11.45am.

Friday 27 September

The Ciderhouse Rebellion: Wingfield Barns, £14, 7.30pm.

Saturday 28 September

Dance: with Ian Gillion Jr & band, Red Feather Club.

Sunday 29 September

Public Open Day: followed by 95th BGHA AGM, Red Feather Club.

Wednesday 2 October

Redlingfield Coffee Caravan: 10am-noon.

Saturday 5 October

Harvest Supper: Horham CC.

Sunday 6 October

Common Ground Theatre Company presents Ghost of the Toll Point Light: Wingfield Barns, 7.30pm, £14/£10 (under 21s).

Saturday 12 October

Daisy and the Continentals: The Bank, Eye, £10.

Made2Measure Theatre Co presents Lady



The Horticulturalist
ANDREW PETERS & ETHAN PETERS

City and Guilds Qualified
Over 35 Years Experience
Private and Commercial

andrewpeters65@hotmail.com
Mobile: 07956651157
Free Estimates

WANTED

All old games consoles:
Xbox 360, PS1, 2, 3 or 4.
WORKING OR NOT.

Contact Glenn
miller81@btinternet.com

Audley's Secret: Wingfield Barns, 7.30pm, tickets £12.

Sunday 13 October

Rocking Foxes - R'Occold: DJ Crazy Nadge, Occold Village Hall, 2-5pm, £8.

Bring-and-share Harvest Lunch: Horham Old School.

Friday 18 October

Jack Rutter: Wingfield Barns, 7.30pm, £14.

Christina Alden and Alex Patterson - Contemporary Folk Duo: Debenham Leisure Centre, £10.

Friday 25 October

Hannah Scott: Wingfield Barns, 7.30pm, tickets £13.

Saturday 26 October

Redlingfield Village Swing Dance: Redlingfield fundraiser with DJs Andy AV8 & The Mailman, Red Feather Club, tickets £10.

Sunday 27 October

Public Open Day: Red Feather Club.

Steam Railway Day & Vintage & Bygones Exhibition & Fair: MSLR.

Friday 8 November

Megson: Wingfield Barns, 7.30pm, £16.

Saturday 16 November

Reg Meuross: Wingfield Barns, 7.30pm, £14.

Mad Dog Mcree: Debenham Leisure Centre, £20.

Tuesday 19 November

Horham & Athelington Parish Council: Horham CC, 7.30pm.

Friday 22 & Saturday 23 November

RoughCast Theatre Company presents Pygmalion by George Bernard Shaw:

Wingfield Barns, 7.30pm, tickets £12/£6 (students).

Friday 29 November

The Deep Blue Sea, by Terence Rattigan Open Space Theatre Company: Wingfield Barns, 7.30pm, tickets £12.

Saturday 2 & Sunday 3 December

Wingfield Barns Christmas Market: 10am-3pm. £1 entry (kids free).

Friday 6 December

Carol Service: Red Feather Club, 7pm.

Christmas on the Hill: Christmas celebration, Framlingham, from 9am.

Saturday 7 December

Diss Christmas Lights Switch-On: afternoon of festive entertainment - music, performances, food, drink, santa's grotto, parade, Larry Gray's mini funfair, more charity stalls in St Mary's Church and the big switch-on in the Market Place.

Saturdays & Sundays 7-8, 14-15, 21-22

December

Santa Specials: MSLR.

Friday 13 December

Janice Burns & Jon Doran: Wingfield Barns, 7.30pm, tickets £12.

Sunday 22 December

Rocking Foxes - R'Occold: DJ Crazy Nadge, Occold Village Hall, 2-5pm, £8.

Wednesday 1 January 2025

New Year's Steam Up & Historic Lighting Exhibition: MSLR.

Wednesday 5 February 2025

Redlingfield Village Committee Meeting: venue to be advised.

● **Eye Cinema** - Eye Community Centre, advance tickets from The Handyman. To reserve tickets call Kit Brinkley on 07947 414 968 ● **Bank Arts Centre** www.thebankeye.org

● **Helmingham Hall Gardens** www.helmingham.com

● **Mid-Suffolk Light Railway** www.mslr.org.uk ● **Redlingfield** www.redlingfield.suffolk.gov.uk

● **Stonham Barns** www.stonhambarns.co.uk ● **Suffolk Owl Sanctuary** www.owl-help.org.uk

● **Stradbroke Cinema** Stradbroke Community Centre, 7 for 7.30 pm www.stradbrokeonline.org.uk

● **Wingfield Barns** www.wingfieldbarns.com tickets via www.wegotickets.com

Life on an Athelington

While researching the past occupants of my farm at Wickham Market I discovered that it had been farmed by Cornelius Welton a notable agriculturalist of the time. He was the first secretary of the East Suffolk Agricultural Association and as such organised the first Suffolk Show which was held in Wickham Market in 1832.

I also discovered that in 1862 he had given a lecture to the Wickham Market Farmers Club on dairy farming. Part of that lecture referred to his visits to his grandparents John and Elizabeth Fisher who lived at Grove Farm, Athelington.

I thought you might enjoy this fascinating glimpse into the life on a local farm over 200 years ago ...

“When quite a youngster, twice a year, during the school vacation, (mid-summer and Christmas) I invariably paid a visit to my grandfather and grandmother, Mr and Mrs Fisher of the Grove Farm Athelington. I shall not attempt a narration of all the circumstance, or the anecdotes which I have heard of them during their long career, of their unsophisticated and industrious habits; suffice it to say that for upwards of 50 years Mrs Fisher conducted the business of one of the largest dairies in Suffolk, and she was admitted to be one of the best managers of her own times. During this long period the number of cows varied from 20 to 30.

I cannot forget the regularity, order, and neatness which marked all the operations in her house. The plain and homely diet, the respect paid to her by all, as the grand moving WHEEL in the establishment; invariably the first to rise in the morning, which she did winter and summer alike, having taken pretty good care that none remained long after herself in bed; the wheel

was in motion; the maids to scouring the milk trays and pails and herself to skimming the milk till 6 o'clock (milking time) which when done, all sat down to breakfast at the same time in the same room, (not together) She had her own three legged round table, and the servants theirs, on the opposite side: when over, came the busiest time of the day, first with the copper of boiling water, sometimes the churn a-going, cheesemaking, with the eternal talking and scolding together with the clattering of pattens, was quite sufficient to relieve them from all the monotony of a residence and occupation far away from the village or a neighbour.

Thus, things went on till dinnertime, 12 o'clock most punctually. Many and many a time have I seen the dinner smoking upon the table for several minutes before that time, but nothing could ever induce them to sit down till the clock began striking; when *sans ceremonis*, all set to, same as at breakfast, at their respective tables: the repast over, which generally occupied

farm two centuries ago



were safely in bed as the hens to roost, ready to resume in the morning the same routine as on the previous day.

This then, was their general everyday habit, and whilst business was their prime occupation, they yielded in

half an hour, ALL the females were engaged in clearing away, and by 1 o'clock a deathlike stillness reigned throughout the house; mistress and maids repaired to their sleeping rooms for half an hour's rest, and to dress - "tight up" - was the expression. During this interval my grandfather either dozed in his chair, or smoked his pipe, or in busy times was in attendance upon the business of the farm.

At two o'clock the next act commenced: my grandmother generally to knitting or darning stockings, the maids to sewing or spinning; the latter, long after it was profitable, but the spinning wheels were there, and they fancied no new-fangled notions.

At half past four in winter, and five in summer, the teacups and saucers were brought into play but the maidservants waited until after milking the cows, when fleeting or skimming the milk had to be performed again by the mistress; and by eight o'clock or half-past all

hospitality; they had their friends and relatives twice or three times a year to dinner, at one o'clock, and to pass the remainder of the day in good Old English style, and then stay the night. This latter was always considered indispensable; dine the following day, and to take leave so soon after as would enable them to reach their respective homes before dark.

To their young friends, a dance was always given at Christmas upon the spacious old cheese chamber, to the delight of all that ever attended upon such an occasion. I now conclude this brief but faithful outline of the way in which they passed happily on during their long career. Envious of none, respected by all who knew them, and I believe by none more than their worthy landlord (Mr Green). She died in 1839 in her 80th year in the house she had long occupied (55 years) my grandfather the year following, in his 78th year."

Stephen Ling



JUBILEE
BAPTIST
CHURCH

You're Welcome!

We're a small Church, with a big heart, serving a Great God


www.jubilee baptist.co.uk

email: jubilee baptist@occold.com




JUBILEE
BAPTIST
CHURCH

Sundays 10.45am in the Chapel or Village Hall,
Occold, Eye, IP23 7PL


 @jubilee_baptist

 www.facebook.com/JubileeBaptist1


 www.instagram.com/jbcoccold

We have  for each other

We grow together 

 We worship Jesus

We share God's message 

We'd love to see you ...
why not give us a look? 

For any information not online or any questions please contact Rob 07504 927399

Giving glory to God and helping everyone have a strong relationship with Jesus

■ **TRADITIONAL MUSIC DAY:** On Saturday September 21st Stowmarket will be full of the sights and sounds of traditional local music. Along with musicians Stowmarket Traditional Music Day will feature 15 Morris teams. The day will consist of Morris dancing in the town centre and in several of pubs there will be musicians playing. There are concerts, workshops, step dancing, jig dolls, and story tellers performing at a variety of town centre venues. Day-time events at the John Peel Centre, No



11 Market Place, The Walnut, The Pallet Bar, The Royal British Legion, Stowmarket Library, Stowmarket Church and Church Hall and Stowmarket Scout Centre are free. Local singing groups, local musicians and schools will also be taking part in the entertainment. The full programme will be available on the East Anglian Traditional Music Trust website (www.eatmt.org.uk) along with details of how to obtain tickets for the evening concerts for which there is a small charge. **Jan Robinson**

■ **HIGH SUFFOLK COMMUNITY TRANSPORT:** Redlingfield and Horham are lucky to have low-cost community bus services linking them with local towns. Every Friday the Diss service picks up at Horham Post Office at 10.29am returning at 1.41pm. Redlingfield has services to Norwich, Bury St Edmunds and Stowmarket. The Stowmarket service every 2nd, 3rd and 4th Thursday of the month picks up at Redlingfield village sign at 9.31am and returns at 2.15pm. The Bury St Edmunds service on every 3rd Saturday of the month picks up in Redlingfield at 9.38am and returns at 4.14pm. The Norwich services on the 4th Wednesday of each month pick up at 9.31am and return at 4.25pm and on the 2nd Saturday of the month pick up in Redlingfield at 9.34am and drop off at 5.01pm. For the latest High Suffolk Community Bus information please check www.combus.co.uk call Alan on 01728 685694 or Val on 01728 628068. **Maureen Flannery**

■ **COMMUNITY BUS APPEAL FOR NEW DRIVERS:** We are in urgent need of new drivers for the High Suffolk Community Bus. This is a pleasant task to undertake and will help the Community Bus to survive in testing times along with a sense of helping out your Community. Drivers typically undertake two to three trips a month. If you feel this is something you could offer please contact Alan Nette-Thomas 01728 685694.

■ **THANK YOU:** Thank you to everyone who has raised money for St Mary's church in Horham. £170 was raised from the garage sale in June and £232 has been raised by jam and marmalade sales in the shop. **Daphne Harvey**

■ **PLANNING: AWAITING DECISION:** Application detached annex building for use by family member ancillary to host dwelling at **Malsters, Chapel Lane, Horham, IP21 5ES** (DC/24/03374).

Planning information from Midsuffolk District Council <https://planning.baberghmidsuffolk.gov.uk/online-applications/>



REDLINGFIELD & OCCOLD WI

■ **REDLINGFIELD & OCCOLD WI:** Our group had a busy month in June. It started off with four of our members attending the Annual National WI Conference at The Royal Albert Hall. One of them was the delegate representing our other local WI groups and fully supported the vote on the Resolution relating to improving Dental Health Matters. The day included a number of speakers on the subject of Violence Against Women and included ex Spice Girl

Mel B, the victim of an abusive relationship and Archers actor Timothy Watson, who played Rob Titchener, in their storyline about coercive control. Our ladies had a good few days in London, attending the Conference, taking in a show and celebrating a birthday to boot!

Then on 12th June we had our Summer Outing to Somerleyton Hall and Gardens in Norfolk. Despite it being nearly mid-summer, we had a wet and damp day. Fortunately during the



Cowhams

"For today's automotive demands"





Scan or visit
www.cowhams.co.uk
01379 388 999
enquiries@cowhams.co.uk

heaviest downpour we were having our lunch in the cafe! We enjoyed the gardens, tried not to get lost in the maze and had fun clambering about in the roots and branches of one of the huge trees. A good day was had by all.

In July we welcomed Gill Thornton, a local Lino Printer who gave an interesting talk about how she took up the art and gave a demonstration of some of the techniques she uses. Some of us were able to try it out and have also booked onto one of her workshops in October.

Our August meeting was a talk from one of our own members about her passion for Guinea Pigs. She has had Guinea pigs since the age of 10, has bred and shown them so talked with a great deal of knowledge and enthusiasm. It was an informative, entertaining talk full of amusing anecdotes, and her current 'family' were in attendance for cuddles afterwards.

In September we will welcome Michelle Attrill to talk about British Sign Language and October's

meeting will focus on Recycling. We will hold our annual Harvest Supper on Saturday 5th October at 7.30pm in Occold Village Hall. Contact Caroline Miller or Sara for tickets.

We usually meet every month on the first Wednesday of the month in Occold Village Hall at 7.30pm. If you would like more information about our activities please contact Sara Hampson (President) on 01379 678868, or just come along to a meeting. We look forward to welcoming you.

Gill Chapman



***If you are in a hole...
...we'll dig you out***

**07881
642232**

**MINI & MICRO DIGGERS
DUMPERS • BREAKERS • MIXERS
TELEPORTERS • SMALL PLANT
SCARIFIERS • TURF CUTTERS
WACKERS • ROTAVATORS
STRIMMERS • TOOL HIRE**

tom@tlplanthire.co.uk

*Diggers can be provided
with operator, if required.*

Bridge House, Denmark Hill, Palgrave, Diss IP22 1AB



Rhyming like Morrissey

When I was a youngster in the 1980s I used to write rhymes that I referred to as potential song lyrics rather than poems. If Paul Heaton and Morrissey could do it so could I was my attitude. It's just they had talent, which to me is just a word. It was basically what I did to get my thoughts in order. Not meant for anybody else. It gradually declined as something I did in the early 1990s and apart from a period two or three years either side of the Millennium I stopped completely until about 2018. These efforts probably come from the post-lockdown period when it became clear that various society groups had been motivated to use the period to change attitudes by getting their agendas to the fore. I could be the English William McGonagall after sixty years of searching for a role.

STICKS AND STONES

The biggest myth I was told as a youth I'm sure was done in faith and for good, Sticks and stones could cause injury and pain that words just never ever could, Violence was the cause of many social problems and bad words you shook away, Even if you were strong or weak there was no point questioning what they'd say Words told you what a person thought at that moment and that was simply that, Didn't matter if they ridiculed who you are or swept your values under the mat.

Sticks and stones were potential bone breakers this naive youngster got to hear, Words and names were something that got said and if not threatening saw no fear, Sticks and stones were the really nasty things they could aim aggressively broadside, Words were just a minor inconvenience you brushed off when hurting your pride, But sticks and stones could wreck your future and your physical self for evermore,

A realistic approach to comments left you in the same place mentally as before.

But now your words are deemed evil and calling names is now bullying and a crime, Societies' laws move on and we see a major attitude change over a passage of time, Feelings are now protected as we realise more about the mentalities we have in life. Two criticisms in a short period is now seen as calculated abuse of a partner or wife, It is so hard to understand and accept but you have to choose every word said today. Freedom of speech is limited in reality and the default position restricts what you say.

G.G. EVANS

Pest Control Services

07795 177695

01379 608932

info@ggevens.co.uk

MOLES, RABBITS,

WASPS & MORE




or is it McGonagall?

UNIVERSITY OF LIFE

As the bad things happen you realise an idealist lives a foolhardy dream,
You want to believe but finally all the little things build up to be extreme,
Sooner or later the setbacks make the vulnerable realise things hit the fan,
And a youthful optimist becomes a prematurely middle aged grumpy man.

Whatever happened to the carefree young man my parents allowed to grow?
Whatever happened to the optimistic dreamer whose talents started to show?
Whatever happened to the hopeful chancer who could overcome all the strife?
He got continually lost and disillusioned by tough school at the University of Life.

Whatever happened to the wonderful life he saw in film and read in books?
Whatever happened to the respect he saw and pride in some admiring looks?
Whatever happened to the romantic idealist who dreamed of a loving wife?
He got broken down and chewed up by a curriculum at the University of Life.
It's just he grew up to know the World's imperfections that did him down,
The courses of the University of Life saw him graduate as a foolish clown.

Ian Crane

REDLINGFIELD'S 2024 JUMP 'N' JIVE

SATURDAY 26TH OCTOBER

THE RED FEATHER CLUB

**DJs Andy AV8
& The Mailman**

Licensed Bar 7pm till late

PAY ON DOOR OR FOR ADVANCE TICKETS:
To Book Tickets Contact Mike Ager,
Phone: 01379 678835 Email: mike@gn.apc.org
Hidcote Lodge, Mill Road, Redlingfield, IP23 7QU.
Get bank payment details from Mike or make
Cheques to 'Redlingfield Village Amenities Ltd'

**RED FEATHER CLUB, COLDHAMS
HILL, DENHAM, IP21 5DG**

Ticket sales to Redlingfield Village
Amenities (Doorstep Green)
Bar takings to the 95th BGHA
Burger monies to Redlingfield PCC





HORHAM POST OFFICE & SHOP: As many of you will be aware David and Irene Spall, after very many years of wonderful service, are about to deservedly retire from owning and running the Post Office and Shop at Horham. This, we are sure, will leave a large gap for many of the residents, not only in Horham and Athelington, but also in many surrounding villages and

communities who use the shop on a regular basis. With this in mind the Parish Council arranged a meeting for Horham and Athelington residents on the 20th August to examine possible solutions to the issue. Unfortunately, the submissions for the magazine have to be in prior to this date so we are unable to give detailed results of this meeting. However, the editor has kept a slot free at the front of

the magazine in his editorial section for a short summary of the results of the meeting.

SPEED INDICATOR:

Those driving, cycling or even walking hopefully have noticed the new speed indicator sign in the village. It is currently in The Street facing towards Eye and with luck it will encourage all drivers to observe the speed limit through the village. We are in the process of obtaining a second bracket so the sign can be alternated between the approach from Eye and the approach from Stradbroke.

Interestingly, having spoken to the Police at Halesworth, they recently conducted an extensive speed survey through the villages in the area and out of 50

CORNER CLASSICS & ENGINEERING LTD AGRICULTURAL & AUTOMOTIVE

SPECIALISTS IN CLASSIC CAR AND TRACTOR REPAIR AND RESTORATION



**OPEN
MON-FRI 8-5 PM
SAT 8-12PM**

VISIT THE SHOP FOR:

- A RANGE OF LAWN MOWERS AND OTHER GARDEN EQUIPMENT (SOLD AND REPAIRED)
- HYDRAULIC HOSE & PTO STOCKISTS
- FABRICATION
- PARTS

☎ 01379 384842, 07735207494
✉ jamie@cornerclassics.co.uk

📍 LAXFIELD ROAD, STRADBROKE, SUFFOLK IP21 5NL

or so villages, Horham and Laxfield were at the top for those exceeding limits, some by a large margin. With this in mind we may see somewhat more enforcement than in the past!

NOTICE BOARD: We've got a new notice board for the Parish Council notices which will be put up in the Bus Stop in the very near future. Looking at the existing board consideration is being given to its relocation. As some are aware its situation on the corner by the shop and Dragon House is far from ideal as crossing the road to read it can be fraught with danger. A better place could be by the Phone Kiosk near the Old School. This is a work in progress.

CARAVANS: There have been several communications to the Parish Council

regarding the caravans and hard standing opposite Hall Farm, Stradbroke Road. This is currently in the hands of the County Council and any questions should be directed to them.

THANK YOU LIZ: Finally, we would like to take this opportunity to extend thanks to Elizabeth Gibson-Harries who, after some years has decided to stand down from the Parish Council. Her knowledge, after some time as District as well as Parish Councillor, has been invaluable. Thank you.

● The next Parish Council meetings are Tuesday 17th September and Tuesday 19th November at 7.30pm at Horham & Athelington Community Centre.

**Andy Black, Horham and Athelington
Parish Council**

Do you OR your organisation need help with
study or apprenticeship costs such as:-

Books

Course-fees

Equipment

Specialist Clothing

Are you under 25 and live in EYE, ATHELINGTON,
HORHAM OR BEDFIELD

The Eye Grammar School Fund
may be able to help!

Meetings to award grants are held in January, April, July and October
For more information contact

Clerk to the trustees: Susan Whymark

eyegrammarschool@gmail.com





Lucy Elkin (Eye, Occold and Reddingfield) 07928 512590
lucy.elkin@midsuffolk.gov.uk
www.facebook.com/CllrLucy/

It has been a busy few months at Mid Suffolk District Council and I wanted to share a few projects that might be of interest:

COST OF LIVING SUPPORT: We know the cost of living is causing difficulties for many people. You can find information about the help on offer from the Council here: www.midsuffolk.gov.uk/benefits-money-and-debt-advice. If you are a Mid Suffolk Council tenant and finding it difficult to pay for housing costs, you can apply for the Household Support Fund for some help. You can do this on www.midsuffolk.gov.uk/w/household-support-fund or you can phone 0300 1234000, option 3. Citizen's Advice

Bureau (CAB) are in Eye Library every Friday morning. Anyone can drop in to talk to them in confidence for advice on debt, benefits and many other issues. You can also phone them through the week on 01449 676060/01449 676280.

HELP FOR LISTED BUILDING OWNERS:

We are lucky to have so many beautiful listed buildings in our District – but they can be very challenging (and not very sustainable) to heat. At July's Council meeting, a new initiative was agreed to look at allowing Grade II listed building owners to make sensitive energy efficiency upgrades more quickly and easily. The first such initiative in the country, it will involve both Mid Suffolk and Babergh Councils working closely with Historic England to agree options. Potential upgrades include improving or replacing windows, and permitting solar PV and other renewable technologies to

01728 628233

AH
Athelington Hall



Cheeky Porker Hog Roast

Our Hog roasts can be tailored to any occasion feeding between 60-250 people. Slow cooked here for 10+ hours, just wait until you try our crackling!



Log Cabin Holidays

Are you looking to get away but don't want to travel too far? Come and enjoy a well earned break in a luxury lodge with your own private hot tub nestled away in the tranquil countryside at Athelington Hall.

Athelington Hall Horham Eye Suffolk IP21 5EJ
info@logcabinholidays.co.uk

be installed on unlisted outbuildings. The aim is to enable residents to more easily reduce the energy needed to power and heat their listed homes.

BRINGING EMPTY HOMES BACK INTO

USE: Around the District there are hundreds of properties that have been empty for two or more years. Bringing these back into use is a sustainable way of creating much-needed new homes. The Council’s Houses4Homes project works with property owners to make repairs and bring empty buildings back into use. You can find out more (or log a property that you think might be empty) at www.midsuffolk.gov.uk/w/empty-homes or contact the team by on enquiries@houses4homes.org or 0300 1234000.

For District Council issues, please contact me and I will try my best to help.

See you soon,

Lucy (District Councillor for Eye Ward - Eye, Occold and Redlingfield).

■ **HORHAM BAPTIST CHURCH:** All-Age Harvest Thanksgiving Service ... Join us at Horham Baptist Church on 15th September @ 10:30am as we thank God for his provision over another successful harvest – even if the weather didn’t always do what we wanted it to! This service aims to have something for every age group, from the youngest of us to the good ol’ boys (& gals). There will also be a crèche room available with a screen relaying the service next door. After the meeting, we’ll enjoy a bring-and-share lunch together before heading back into the chapel to sing some songs of praise to our God. You are more than welcome to any or all of these events. We hope to see you there!

Courtney Chilvers, Ministry Trainee



**Safe & Sound
Hygiene and Pest Control**

Is your garden overrun with moles?

Do you have a wasp nest?

Are your paddocks overrun with rabbits?

For ALL your domestic or commercial Pest Control

Woodworm treatment available.

No obligation – free survey/quotes.



Pest infestation can damage your health and your home. Recent surveys show that numbers of mice/rats and bed bugs found in UK homes are on the rise. As Local Authorities are cutting back on free pest control services. We are here to offer you a service at the right price.

Call us to discuss your pests on 07809226109.

www.safeandsoundhygieneandpestcontrol.co.uk

ALL IS SAFELY GATHERED IN

Autumn brings a sense of completion and celebration as we hold our Harvest Festivals and rejoice in God's good creation. At the same time autumn marks new beginnings for many: a new school year, new energy after holidays, new work and new initiatives perhaps. Maybe now is a better time for resolutions than the dark days of January. Apparently, some people naturally tend to look back and reflect on what is past, while others are more likely to look forward and plan for what is to come. We need both, of course. Which comes easiest to you?

There is no Produce Show at



Rev Canon Eleanor Goodison,
Priest in Charge, Hoxne
Benefice 07876 143579
eleanor.goodison@gmail.com.

Redlingfield this year, so we don't have our usual opportunity to sing harvest hymns on Doorstep Green. Instead, we'll have a harvest theme to our service at 9.30 am on Sunday 8th September and a chance to sing the old favourites then. Athelington will celebrate harvest at the service at 9.30 am on Sunday 6th October and Horham at a special service at 11.15 am on Sunday 13th October.

As we move into November, the sense

■ **ENQUIRIES:** Daphne Harvey, St Mary, **Horham** (384216) or David Spall (384239); Colin Palmer, St Peter, **Athelington** (01728 628747); Hazel Abbott, St Andrew, **Redlingfield** (678217).



The Daily Care Agency

High Banks, Athelington Road, Horham, Eye IP21 5EH
(Open Monday to Friday 09.00-17.00 – closed Bank Holidays)
Tel: **01379 388438** Mobile: **07977 075301**
E-mail: office@thedailycareagency.co.uk

**ARE YOU LOOKING FOR SOME EXTRA CARE AND SUPPORT TO
HELP YOU REMAIN INDEPENDENT WITHIN YOUR OWN HOME
AND COMMUNITY?**

THE DAILY CARE AGENCY IS A SMALL PRIVATELY OWNED
DOMICILIARY AGENCY THAT TAKES PRIDE IN HAVING THE TIME
TO CARE AND OFFER INDIVIDUAL SUPPORT TO OUR CLIENTS

FOR FURTHER INFORMATION PLEASE CONTACT 01379 388438

**ARE YOU A CARER? – WE REGULARLY RECRUIT FOR LOCAL
CARERS TO JOIN OUR TEAM**

The Daily Care Agency is registered and therefore licensed to provide services by the
Care Quality Commission. Provider ID 1-101723169

CHURCH NEWS



**Rev Eleanor Goodison
and Rev John McCracken
behind the wheel of a
combine harvester.**

of Memorial and Thanksgiving for loved ones on the day itself (4.00 pm on Saturday 2nd November at Hoxne church). But death is also a gateway to a marvellous new beginning in eternal life. And as we remember

of completion is expressed in remembering the lives of those we have lost. This year All Souls' Day falls on a Saturday and so we can hold our service

those who have died in war on Remembrance Sunday, we resolve to work for future peace and reconciliation, needed so much at this time. God bless.



**Wilby
CEVC
Primary
School**

OUTSTANDING:

- Behaviour and Attitudes
- Personal Development
- Leadership and Management



**'Welcoming and happy
community'**

**'Exciting and enriching
experiences for all'**

'All pupils learn well'

Leaders have

**'Relentless
ambition' and**

'High expectations'

'Exemplary behaviour'

For more information call 01379 384708 or
email admin@wilby.suffolk.sch.uk or
visit www.wilbyprimary.org.uk

Wilby CEVC Primary School, Brundish Road, Wilby, Suffolk, IP21 5LR

CHURCH SERVICES

■ **Planned Church of England services September to November.**

Fridays: Compline at 6pm on Zoom.

1st September

Fourteenth Sunday after Trinity

9.30am CW Holy Communion, Athelington; 11am CW Holy Communion, Wingfield; 4pm MESSY CHURCH 10TH ANNIVERSARY CELEBRATION, Syleham & Wingfield Village Hall

Sunday 8th September

Fifteenth Sunday after Trinity

9.30am Harvest Communion, Redlingfield;
9.30 for 10am Café Church, Hoxne.

Sunday 15th September

Sixteenth Sunday after Trinity

9.30am Harvest Communion, Hoxne;
11.15am BCP Holy Communion, Horham; 6pm Evensong, Wingfield.

Sunday 22nd September

Seventeenth Sunday after Trinity

9.30am BCP Holy Communion, Syleham; 11am Harvest Festival, Denham; 4pm All Age service, Hoxne.

Sunday 29th September

Eighteenth Sunday after Trinity

11am Benefice Service, Hoxne.

Sunday 6th October

Nineteenth Sunday after Trinity

9.30am Harvest Festival, Athelington; 11am Harvest Communion, Wingfield; 4pm Messy Harvest, Syleham Church.

Sunday 13th October

Twentieth Sunday after Trinity

9.30 am CW Holy Communion, Redlingfield; 9.30 for 10am Café Church, Hoxne; 11.15am Harvest Festival, Horham.



David Dunnett Family Butcher

17 Church Street, Eye - Tel: 01379 870155

Web:- dunnettbutcher.co.uk

Beef, Pork, Lamb & Poultry from local Farms

♦ *Home Made Sausages our Speciality* ♦

For the B.B.Q all home made

Lamb Grillsticks Marinated in a Variety of Flavours

Beef, Pork, Chicken & Lamb Kebabs

Marinated Belly Pork & Pork Ribs

Beef, Pork, Lamb, Chicken & Venison Burgers

Sunday 20th October

Twenty-first Sunday after Trinity

9.30am CW Holy Communion, Hoxne;
11.15am BCP Holy Communion, Horham;
6pm Evensong, Wingfield.

Sunday 27th October

Last Sunday after Trinity (Bible Sunday)

9.30am BCP Holy Communion, Syleham;
11am CW Holy Communion, Denham;
4pm All Age service, Hoxne.

Saturday 2nd November

All Souls' Day

4pm Service of Memorial and
Thanksgiving, Hoxne.

Sunday 3rd November

All Saints' Sunday

9.30am CW Holy Communion,
Athelington; 11am CW Holy Communion,

Wingfield; 4pm Messy Church, Syleham
& Wingfield Village Hall.

Sunday 10th November

Remembrance Sunday

9am BCP Holy Communion and Act of
Remembrance, Wingfield EG; 10.45am
Remembrance Service, Redlingfield; 3pm
Remembrance Service, Horham

Sunday 17th November

Second Sunday before Advent

9.30am CW Holy Communion, Hoxne;
11.15am BCP Holy Communion, Horham;
6pm Evensong, Wingfield.

Sunday 24th November

Christ the King

9.30am BCP Holy Communion, Syleham;
11am CW Holy Communion, Denham;
4pm All Age service, Hoxne.

Abbreviations: BCP – Book of Common Prayer; CW – Common Worship.

EYE — SALON
HAIR + BEAUTY

We've moved!

We are now at The Hexagon, Broad Street, Eye, Suffolk, IP23 7AF.

Eye Salon is a friendly hair and beauty salon that has been trading for more than seven years.

Our fully trained team uses
well-known, trusted brands and we all
have a passion for hair and beauty.

With our large range of hair and
beauty services we can adjust to suit
our clients' individual needs, whatever
style or age.

To book an appointment call us on
01379 871 996
or visit our website to book online!
www.eye-salon.co.uk



Mobile Hairdresser and Hair Extension Specialist In Horham and surrounding areas

Available weekdays between 9am and 3pm

Woman's, men's and children's haircuts and colouring services. 15 years experience and previous salon owner.

Cutting:

Wash, cut & blow-dry - £25

Wash & blow-dry - £15

Children under 12 - £10

Colour (all prices include wash, cut & blow dry):

Half head foils - £65

Full head foils - £85

Toner - £10 after colouring service

Men's from £12

Hair Extensions

Natural looking, real hair extensions for clients wanting fuller, thicker or longer hair. High quality, durable hair lasting 12-18 months, fitted with inconspicuous Nano-bonds.

Prices:

Full head hair extensions, including fitting, shaping and styling - From £300 for added length and thickness.

Maintenance from £30

Free consultation and colour match.

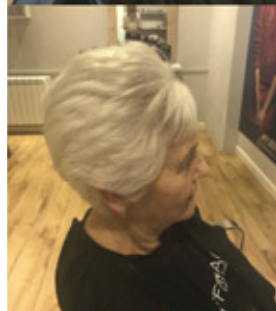
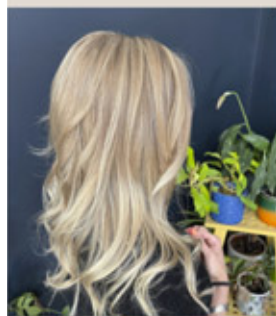
Take a look at my Facebook page:

@HairByChloeJThomas
for more examples of my work.

Chloe Thomas

07584 062280

**White House Cottage
Horham**



Fleurs Artisan Florist & Greengrocer



There's always something to celebrate . . .

Arrangements ● Bouquets
● Hand-tied & aqua pack
gift-boxed bouquets
● Garlands

For opening times please
visit our website
www.fleursartisan.co.uk

Greengrocery orders for
collection, email us and
we can forward our
list by return.

Please order early to
avoid disappointment.

Fleurs Artisan Florist & Greengrocer,
6 Church Street, Eye
www.fleursartisan.co.uk, 01379 831083,
fleursartisan@btconnect.com





Barley Green Garage

ONE-STOP SHOP FOR ALL YOUR MOTORING NEEDS!



MOT



Servicing



Repairs



Air-Con



Tyres



Exhausts



Diagnostics



Batteries



Tow Bars

ALL MAKES AND MODELS WELCOME

SAFE IN OUR HANDS

With over twenty years experience in the motor trade, Barley Green Garage can offer you peace of mind that your vehicle is repaired to the highest standards.

We can offer "While You Wait" appointments, so why not enjoy a coffee and a comfortable chair while we repair your vehicle or perhaps you would prefer to have a lift home and we come pick you up when your vehicle is ready.



Barley Green Garage
@barleygreengarage

Tel: 01379 388 947

Laxfield Road, Stradbroke, IP21 5JT

www.barleygreengarage.com

email: barley_green_garage@btconnect.com

